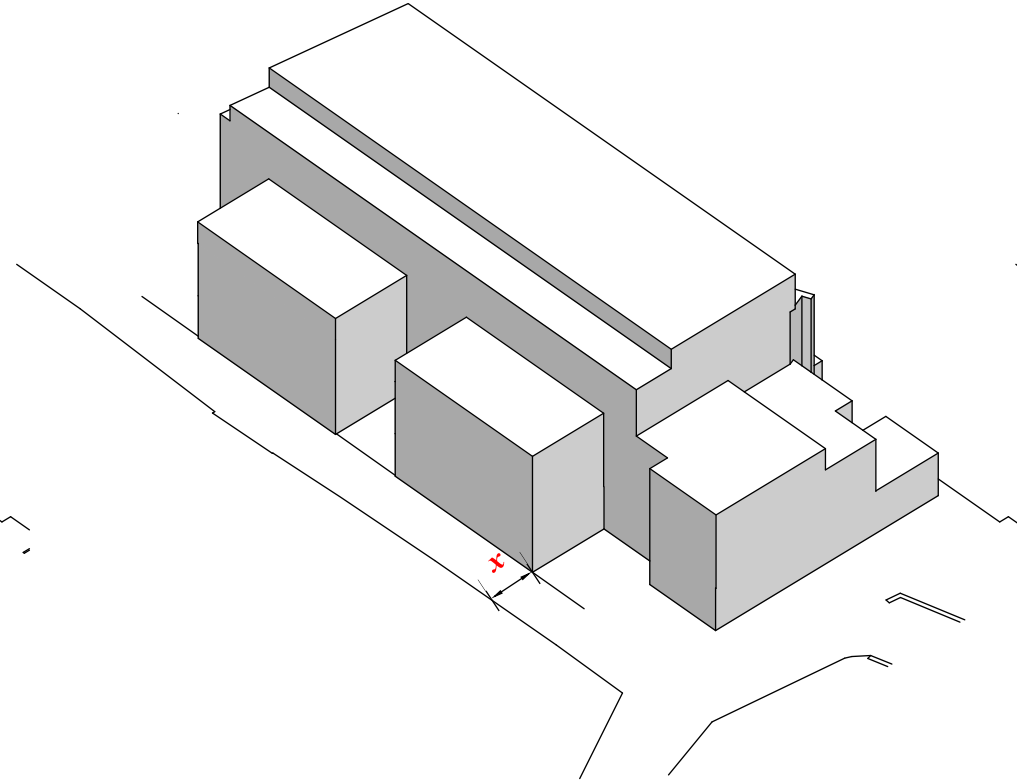


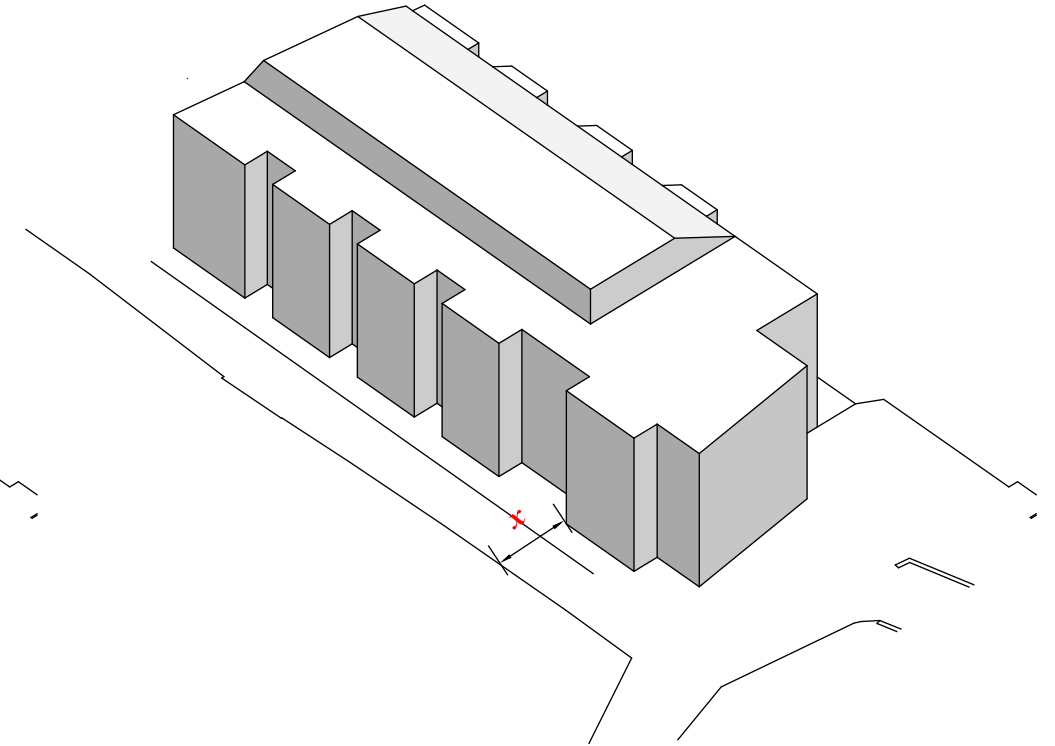
Existing Site

Min width of **x** = 2.3m
 Footprint = 381m²
 Building volume above ground = 2474m³



Refused Scheme

Min width of **x** = 2.3m
 Footprint = 360m²
 Building volume above ground = 2648m³



Proposed Scheme

Min width of **x** = 3.5m
 Footprint = 287m²
 Building volume above ground = 2221m³

1-8 COLLEGE YARD, NW5 1NX, LONDON

Volume Comparison

G M L Architects

UNIT 3, 1-4 Christina Street, London, EC2A 4PA
 Tel: 020 7729 9595 Fax: 020 7729 1801 info@gmlarchitects.co.uk

SCALE: NTS
 ISSUED FOR: PLANNING
 FIRST ISSUED: 17/10/2014

4129/P/052