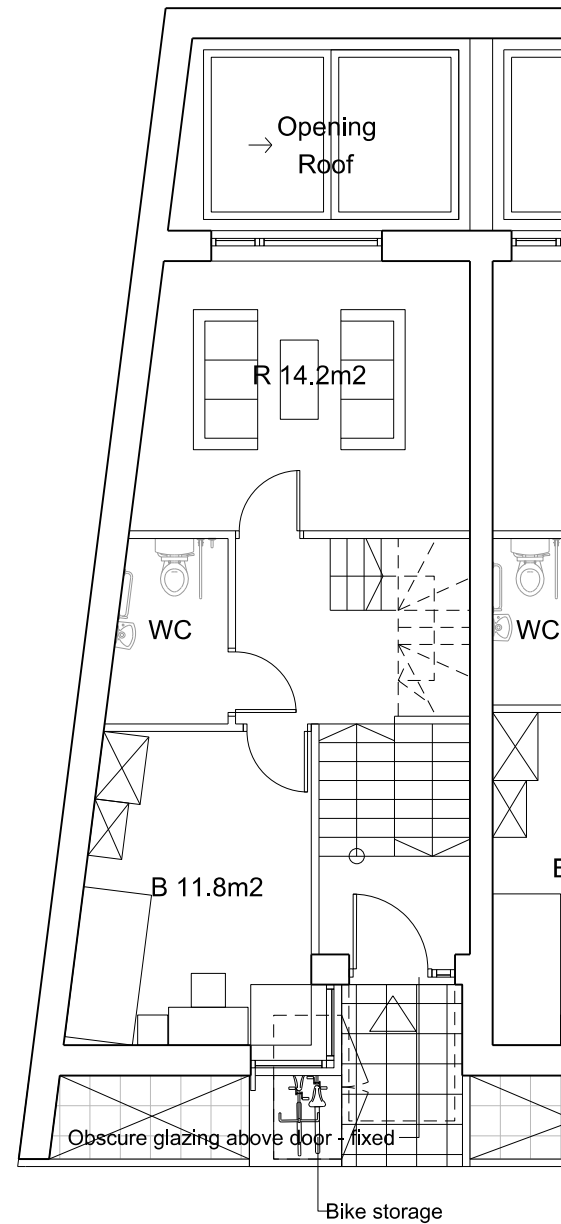
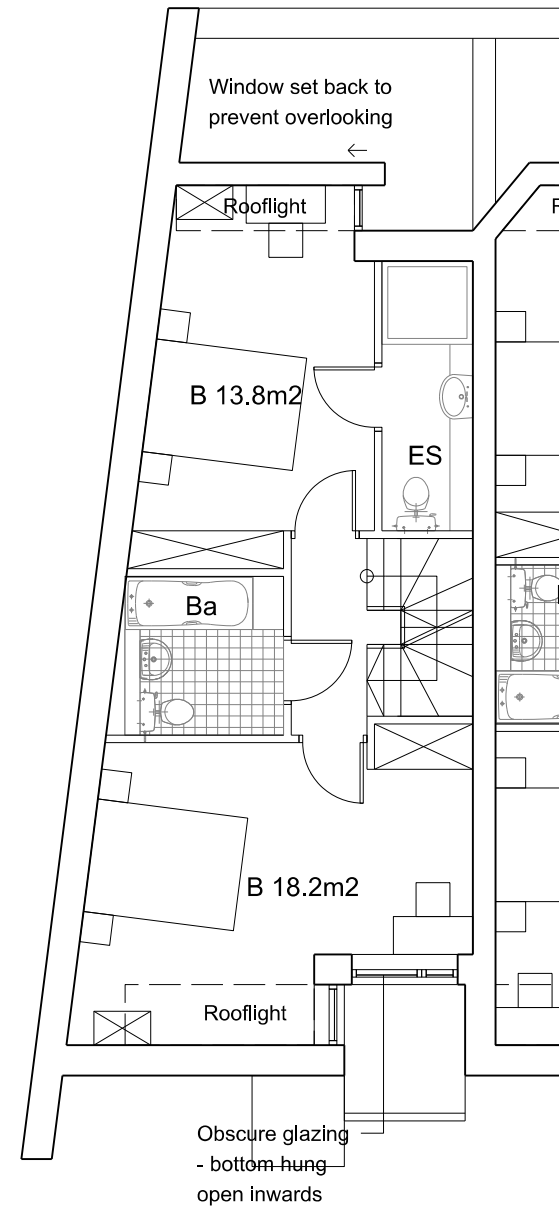


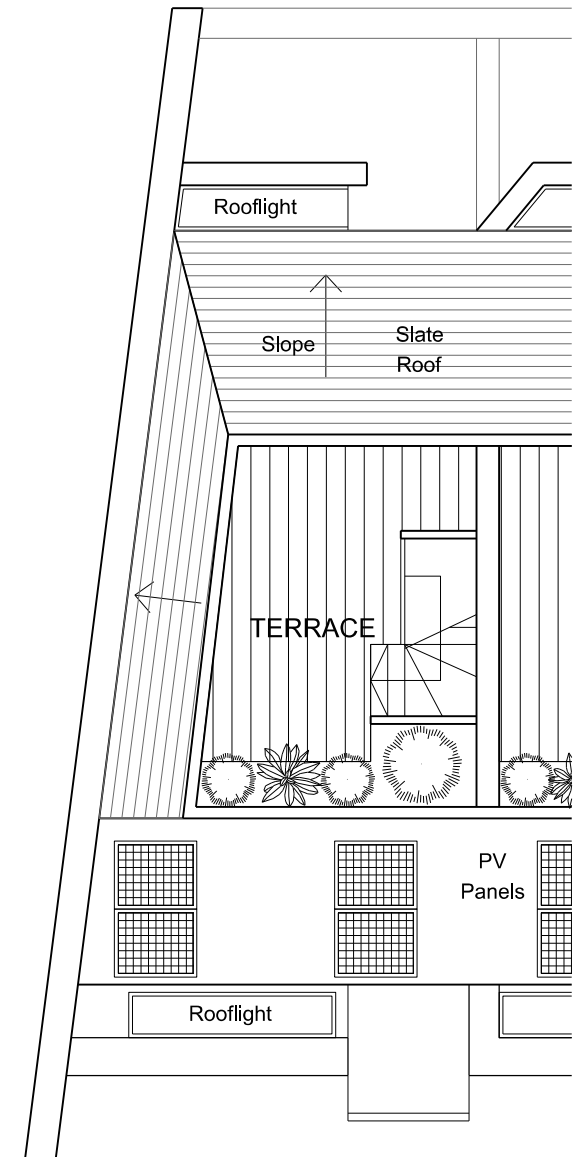
LOWER GROUND FLOOR



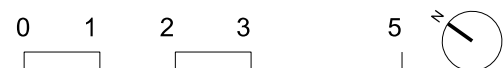
UPPER GROUND FLOOR



1st FLOOR



ROOF PLAN



REVISION:

A	28.07.2014	Canopy amended
B	28.08.2014	Obscured glazing added, rooflight opening amended
C	06.11.2014	Bin and bike stores amended

1-8 COLLEGE YARD, NW5 1NX, LONDON

Proposed House 6 Floor Plans

PLANNING APPLICATION JULY 2014

G M L Architects

UNIT 3, 1-4 Christina Street, London, EC2A 4PA
 Tel: 020 7729 9595 Fax: 020 7729 1801 info@gmlarchitects.co.uk
 SCALE: 1:100@A3
 ISSUED FOR: PLANNING
 FIRST ISSUED: 11/07/2014 **4129/P/016 C**