

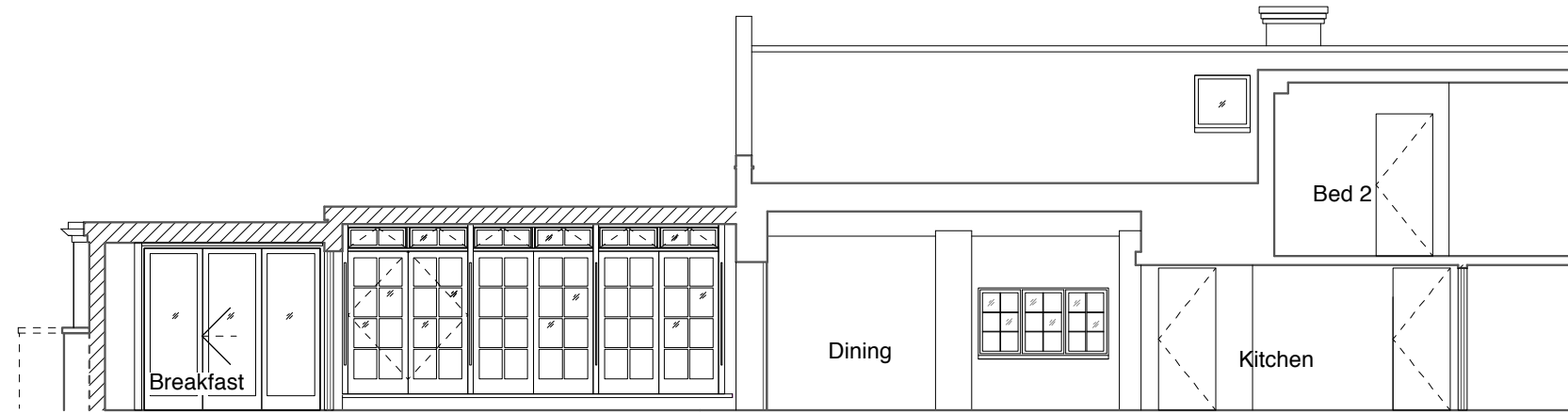


General Notes
 This drawing is for Planning application only
 All dimensions to be verified on site
 To be read in conjunction with all relevant documents
 In the event of discrepancy notify the Architect immediately
 This document is copyright of Hugh Cullum Architects Ltd

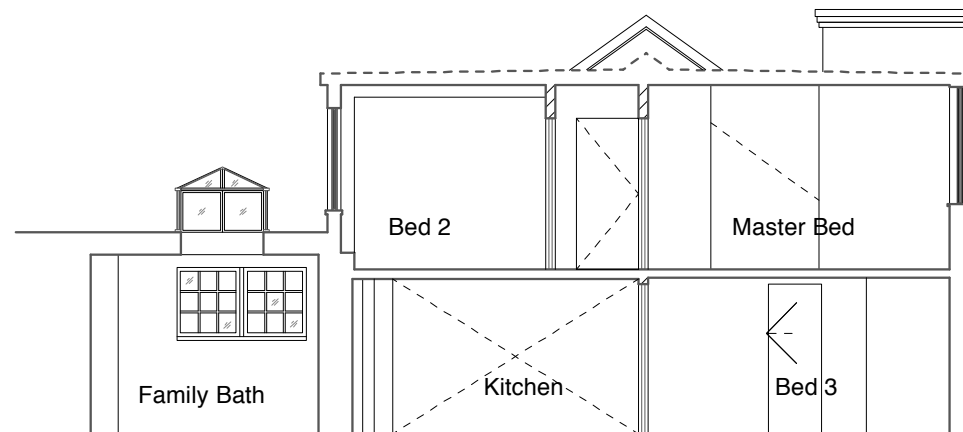
Issue Status
 SK Information F Feasibility D Design
 P Permissions S Scheme T Tender
 C Construction E Existing Condition

DRAWING KEY

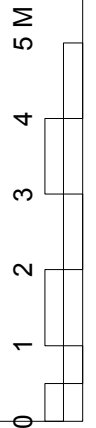
-  Existing construction
-  Proposed construction



Section I



Section II



(B) Extension height is lowered, where visible from the street, wall changed to brick, glass lantern replaced with glass roof at West end (10.03.15/YH)
 (A) Deesign revised (19.02.15/YH)
 (..) Issued for Planning (24.12.14/YH)
 Revision: Information (date/drawn by)

HUGH CULLUM ARCHITECTS LTD
 Bloomsbury Design
 61b Judd Street
 London WC1H 9QT
 t 020 7383 7647
 f 020 7387 7645
 mail@hughcullum.com

23 Three Cups Yard
 Planning: Proposals
 Section I and II
 1:100@A3 December 2014
OSP23-P025(B)