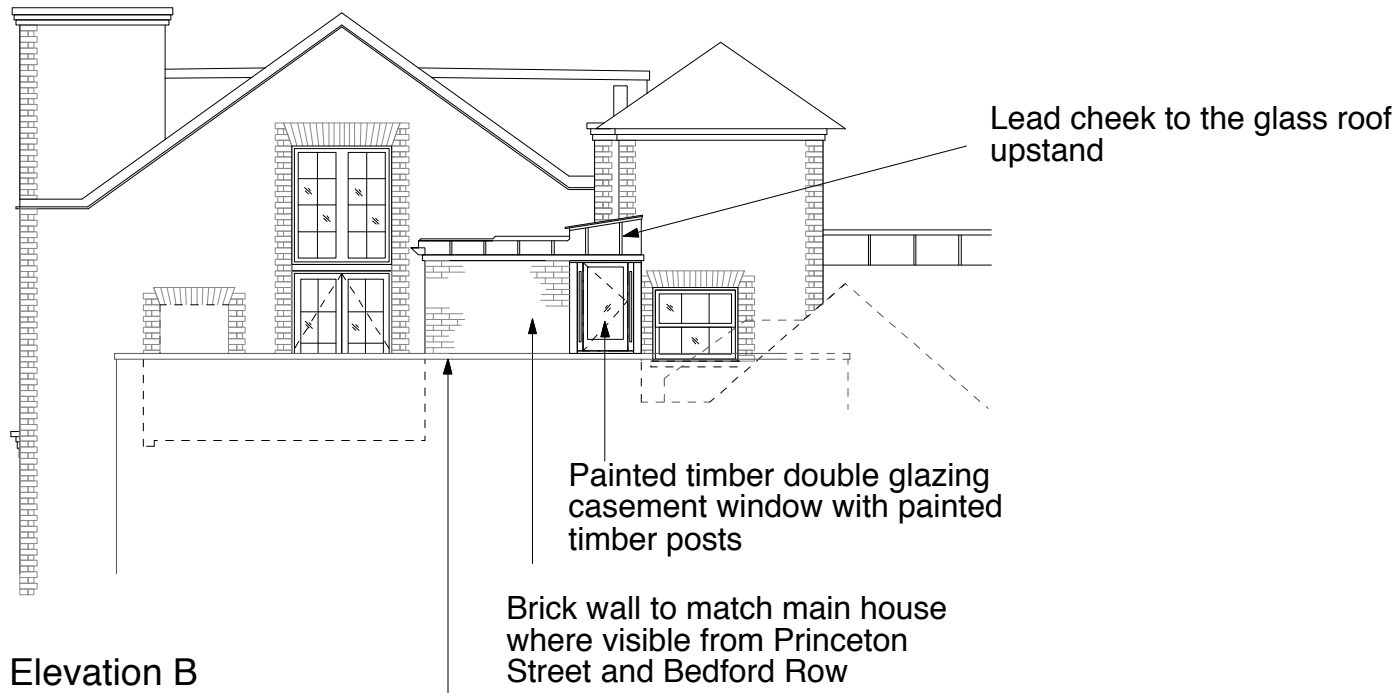
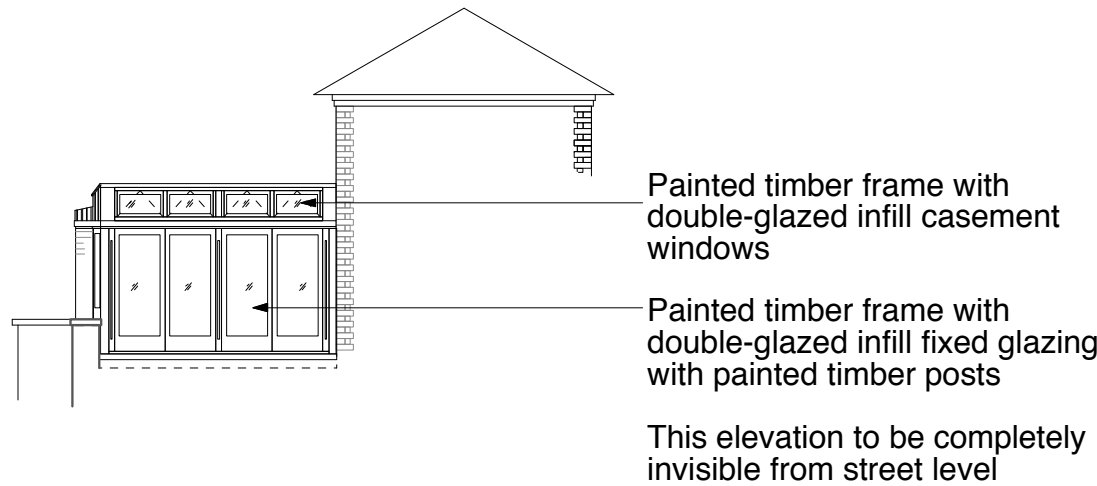


General Notes  
This drawing is for Planning application only  
All dimensions to be verified on site  
To be read in conjunction with all relevant documents  
In the event of discrepancy notify the Architect immediately  
This document is copyright of Hugh Cullum Architects Ltd

Issue Status		
SK	Information	F Feasibility D Design
P	Permissions	S Scheme T Tender
C	Construction	E Existing Condition



Existing parapet to be retained



(B) Extension height is lowered, where visible from the street, wall changed to brick, glass lantern replaced with glass roof at West end (10.03.15/YH)  
(A) Deesign revised (19.02.15/YH)  
(\_) Issued for Planning (24.12.14/YH)  
Revision: Information (date/drawn by)

5 M  
4  
3  
2  
1  
0

HUGH CULLUM  
ARCHITECTS LTD  
Bloomsbury Design  
61b Judd Street  
London WC1H 9QT  
t 020 7383 7647  
f 020 7387 7645  
mail@hughcullum.com

23 Three Cups Yard  
Planning: Proposals  
Elevation B and C  
1:100@A3 December 2014  
OSP23-P024(B)