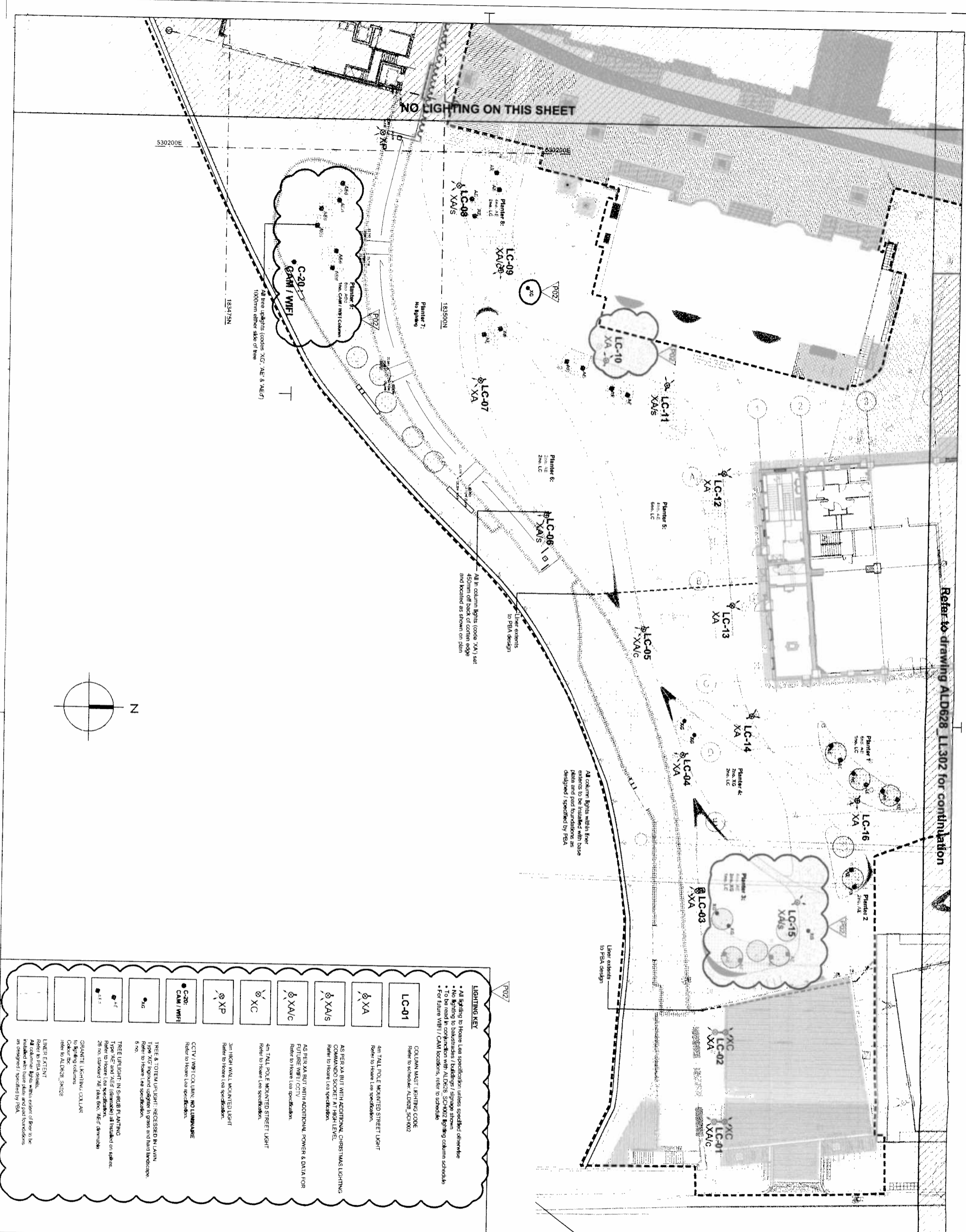


Refer to drawing ALD628_LL302 for continuation

NO LIGHTING ON THIS SHEET



LIGHTING KEY

- All lighting to House Lea specification unless specified otherwise
- No lighting to be installed in areas shown in red
- To be installed in areas shown in green
- For future WiFi / CAM locations, refer to schedule

LC-01	COLUMN MAST LIGHTING CODE Refer to schedule, ALD628_SCH002
XA	4M TALL POLE MOUNTED STREET LIGHT Refer to House Lea specification.
XA/C	AS PER XA BUT WITH ADDITIONAL CHRISTMAS LIGHTING COMMAND SOCKET AT HIGH LEVEL. Refer to House Lea specification.
XA/S	AS PER XA BUT WITH ADDITIONAL POWER & DATA FOR FUTURE WIFI / CCTV Refer to House Lea specification.
XA/C	4M TALL POLE MOUNTED STREET LIGHT Refer to House Lea specification.
XP	3M HIGH WALL MOUNTED LIGHT Refer to House Lea specification.
CAM / WIFI	CCTV / WIFI COLUMN, NO LUMINAIRE Refer to House Lea specification.
AE	TREE A, TOTEM LIGHT, RECESSED IN PLAIN TYPE XG, REFER TO SCHEDULE FOR SPECIFICATION Refer to House Lea specification.
AE/F	TREE UPLIGHT IN SHRUB PLANTING TYPE XE and XEF (dimmed) all installed on stakes. 20m to standard file size, AE/F diameter Refer to House Lea specification.
AE	GRANITE LIGHTING COLUMN Refer to schedule, ALD628_SCH002 Refer to House Lea specification.
AE	LINER EXTENT Refer to PBA details. All column lights with their base and pad foundations as designed / specified by PBA.

© 2014 Applied Landscape Design Limited. All rights reserved.

COMMENTS

The following list of work along with hazards and risks normally associated with the nature of the work, based on the drawing should be noted. Refer to design risk assessment ALD628_PAS01 and significant hazard terms.

R0001 - Working in close proximity to canal edge

NOTES / REV:

- Linked to PBA details

REFERENCE DRAWINGS/DOCUMENTS

ALD628_SCH002	Lighting Column Schedule
ALD628_LL101 - LL104	Hard Landscaping General Arrangements

REVISIONS

NO.	Issued	date
P01	Issue for Information	19/09/14
P02	Issue for Information	04/26/14

LANDSCAPE ARCHITECT:

AKIER

ALD

The Planning Dept, Spring Park Square,
Chesham, Bucks, UK. HP80 2JY
Tel: 0494 450000 Fax: 0494 450001
www.akier.co.uk

CLIENT:

KKO

KINGS CROSS CENTRAL

PROJECT:

LL303

DRAWING TITLE:

LIGHTING LAYOUT

GENERAL ARRANGEMENT

SHEET 3

DATE	BY	CHECKED
1:200 @ A1	AMO	AMO
01.09.2014		

STATUS: Construction

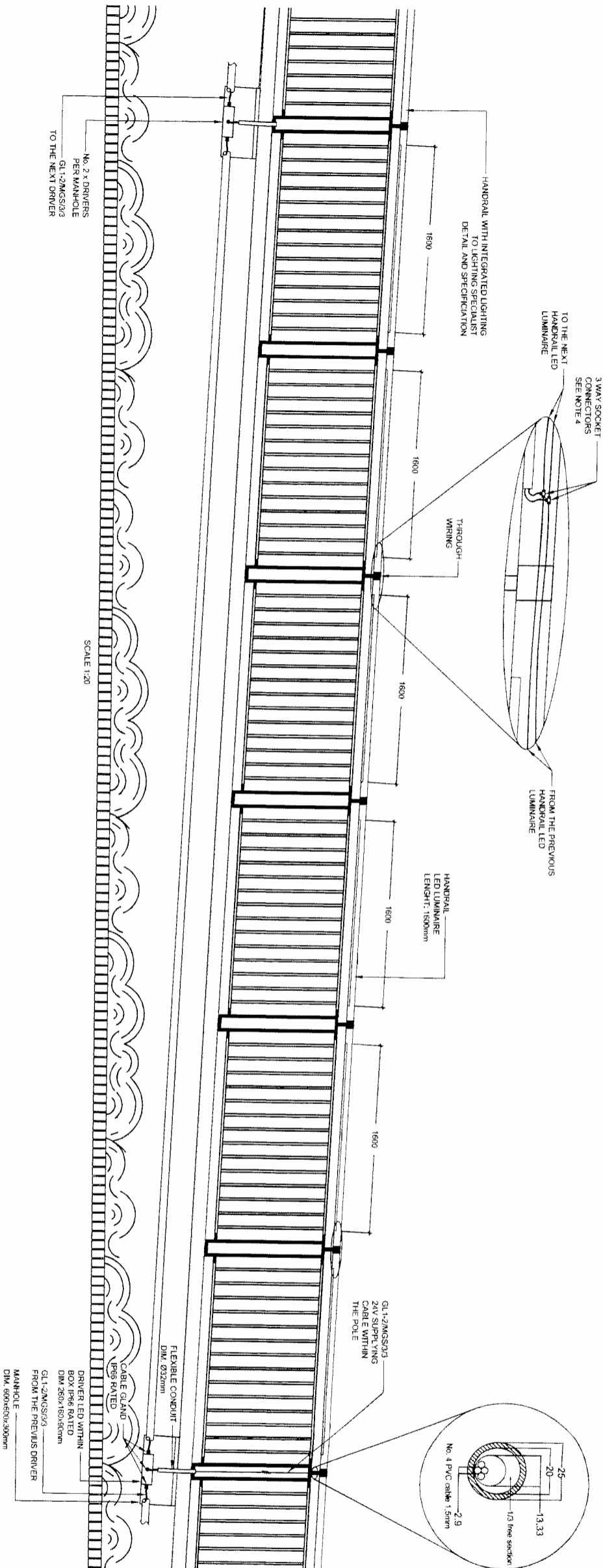
PROJECT NO.: LL303

DRAWING NUMBER: P02

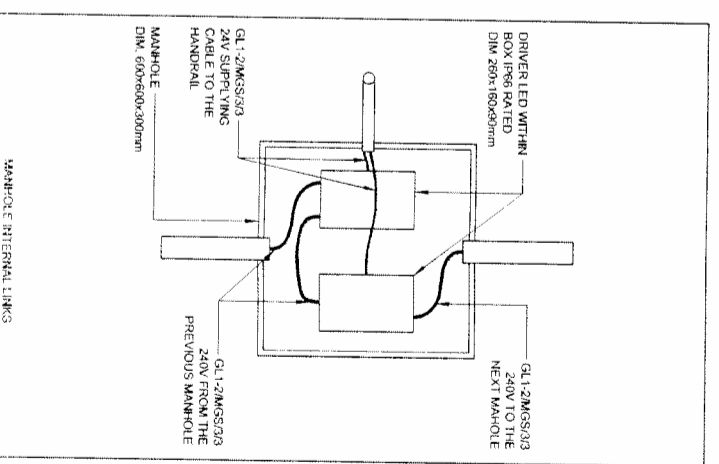
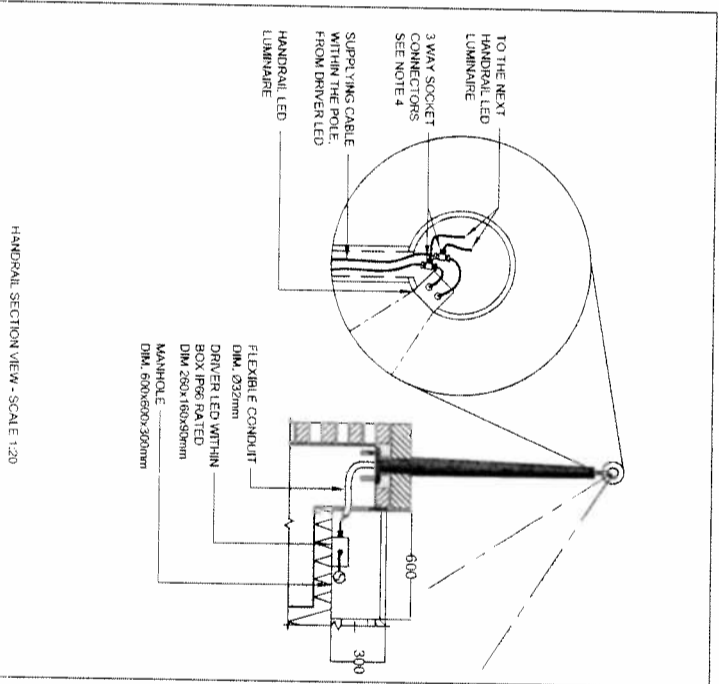
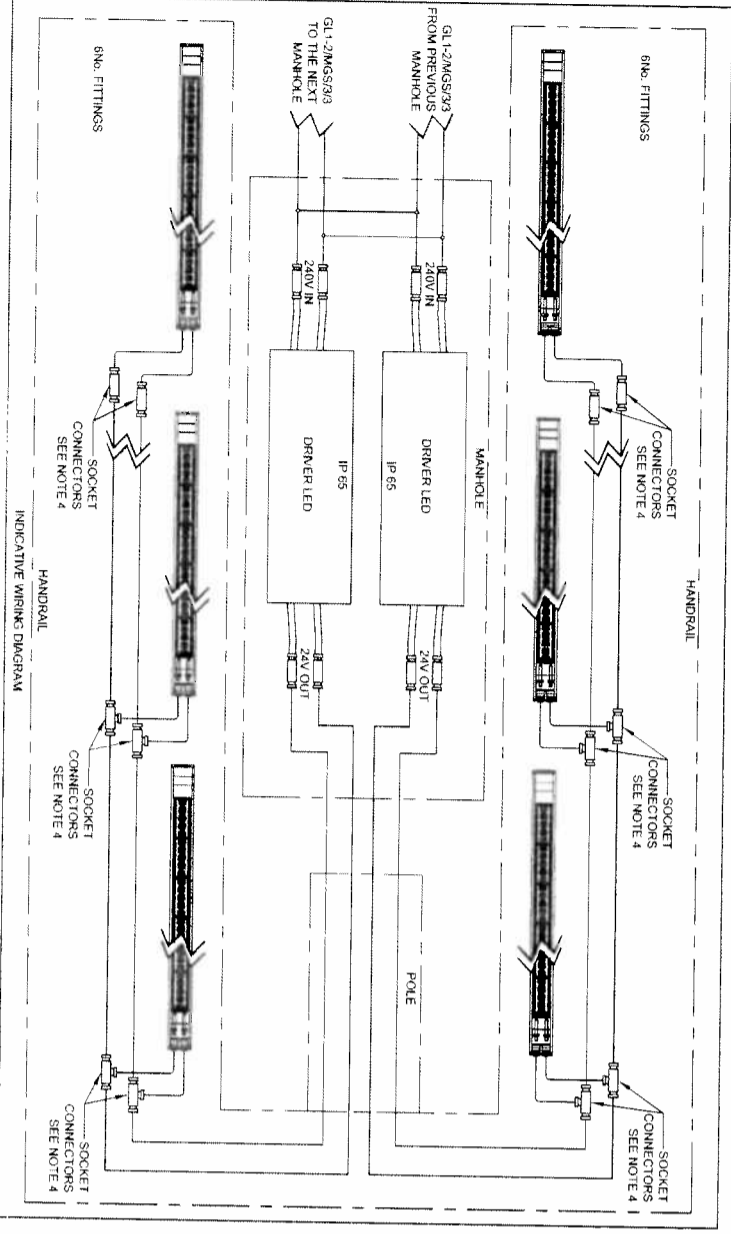
REVISION:

628/14

ORIGINAL AT SIZE SHEET



SCALE 1:20



CDM Pre-Construction Information
The following information is provided in pursuance of Reg. 11(6) of the CDM Regulations 2007:

- NOTES:**
1. The drawing does not necessarily show all the information needed to interpret the design intent of the construction details.
 2. Any conflict in information from more than one source and that is not resolved in consultation with an relevant specifications.
 3. Any apparent drafting errors and differences between other drawings and specifications shall be brought to our attention.
 4. Open back cable to be left to allow for ease of connectors removal and LED luminaire substitution.

TI	EMER ISSUE	AV	DKT	M/J/L
Rev	Rev	Rev	Rev	Rev
1				

Architect:
TOWNSHEND LANDSCAPE ARCHITECTS

Client:
ARGENT

Project Title:
TENDER ISSUE

Project No:
www.hoarelea.com

Project Title:
HOARE LEA

Project Title:
ARGENT

Project Title:
POOL

Drawing Title:
DETAIL HANDRAIL DISTRIBUTION

Project No:
0208972

Client:
AV

Date:
JULY 2014

Scale:
N.T.S. @ A1

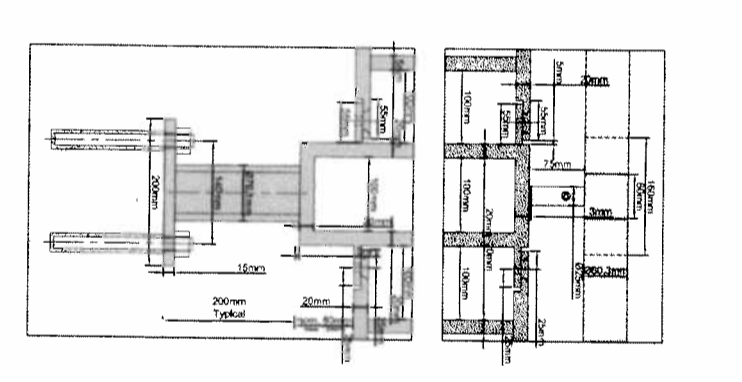
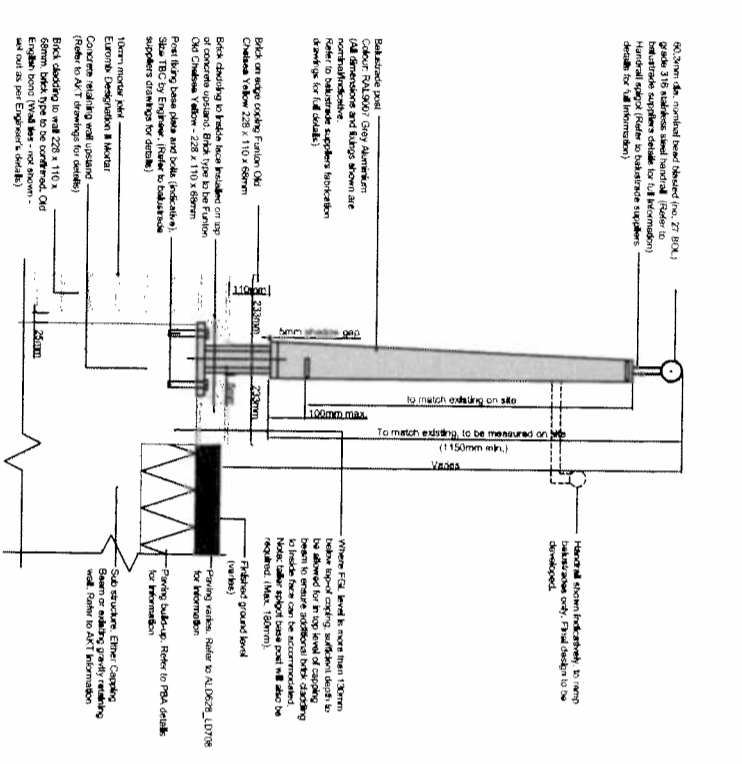
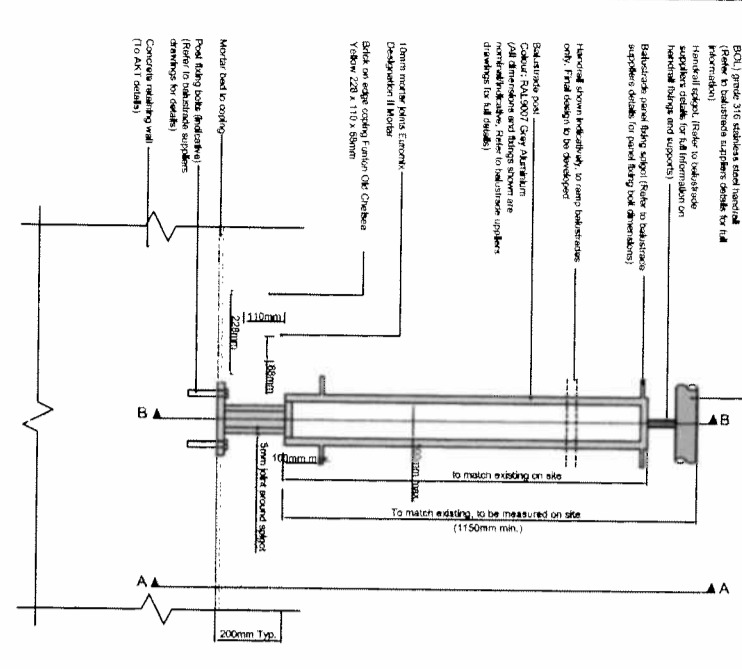
Location:
LONDON

Wharf Road (KK0) Lighting Schedule

Symbol	Description	Manufacturer	Image
AE	<p>Product Name: PLAZA 20 Description: FEATURE UPLIGHT Mounting: SPIKE Lamp wattage: 16W Lamp type and colour: LED 3000K Dimensions: 97Wx150Lx93Hmm IP Rating: 66</p>	ACDC Lighting	
XA	<p>Product Name: SLOT POLE (SINGLE) Description: STREET LIGHT Mounting: POLE Lamp wattage: 37W Lamp type and colour: LED 3000K Mounting Height: 5.0m AFFL IP Rating: 66</p>	SIMES	
XC	<p>Product Name: SLOT POLE (DOUBLE) Description: STREET LIGHT Mounting: POLE Lamp wattage: 37W Lamp type and colour: LED 3000K Mounting Height: 5.0m AFFL IP Rating: 66</p>	SIMES	
XG	<p>Product Name: INGROUND UPLIGHT Description: ADJUSTABLE BEAM UPLIGHT Mounting: IN GROUND Lamp wattage: 13W Lamp type and colour: LED 3000K Diameter 205mm Depth 130mm IP Rating: 68</p>	BEGA	
XP	<p>Product Name: PIA230 Description: STREET LIGHT Mounting: WALL Lamp wattage: 35W Lamp type and colour: CDM-T 3000K Dimensions: Length 210 mm Depth 140 mm IP Rating: 66</p>	WE-EF	

NOTE:
 Details shown are outline design only. Balustrade to match existing on site installed under Granary Square works. Refer to balustrade supplier fabrication drawings for final and complete balustrade and base-plate details. All details to be checked by Engineer for appropriate load calculations and regulatory/safety compliance etc.

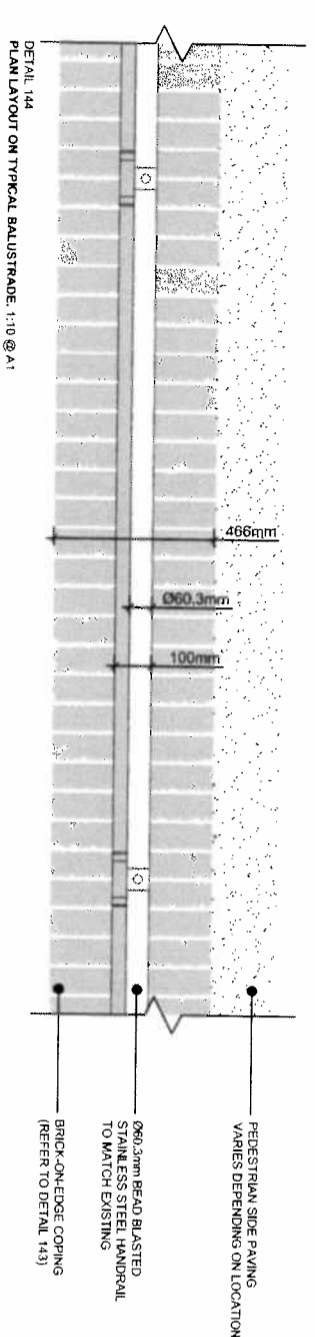
NOTE:
 The following key areas of work along with hazards and risks normally associated with the nature of the work detailed on this drawing should be noted, refer to designers risk assessment and significant hazard forms:
 ALD628 RA901
NOTES / KEY:
 The drawing shows the design intent for the balustrade arrangement.
 Fabricator to produce shop drawings for construction based on surveyed concrete upright base plate locations. The principles shown in this drawing, those listed below and the relevant British and European Design Standards.



DETAIL 142
 FRONT ELEVATION (BRICK FACING TO WALL NOT SHOWN FOR CLARITY)
 1:10 @ A1

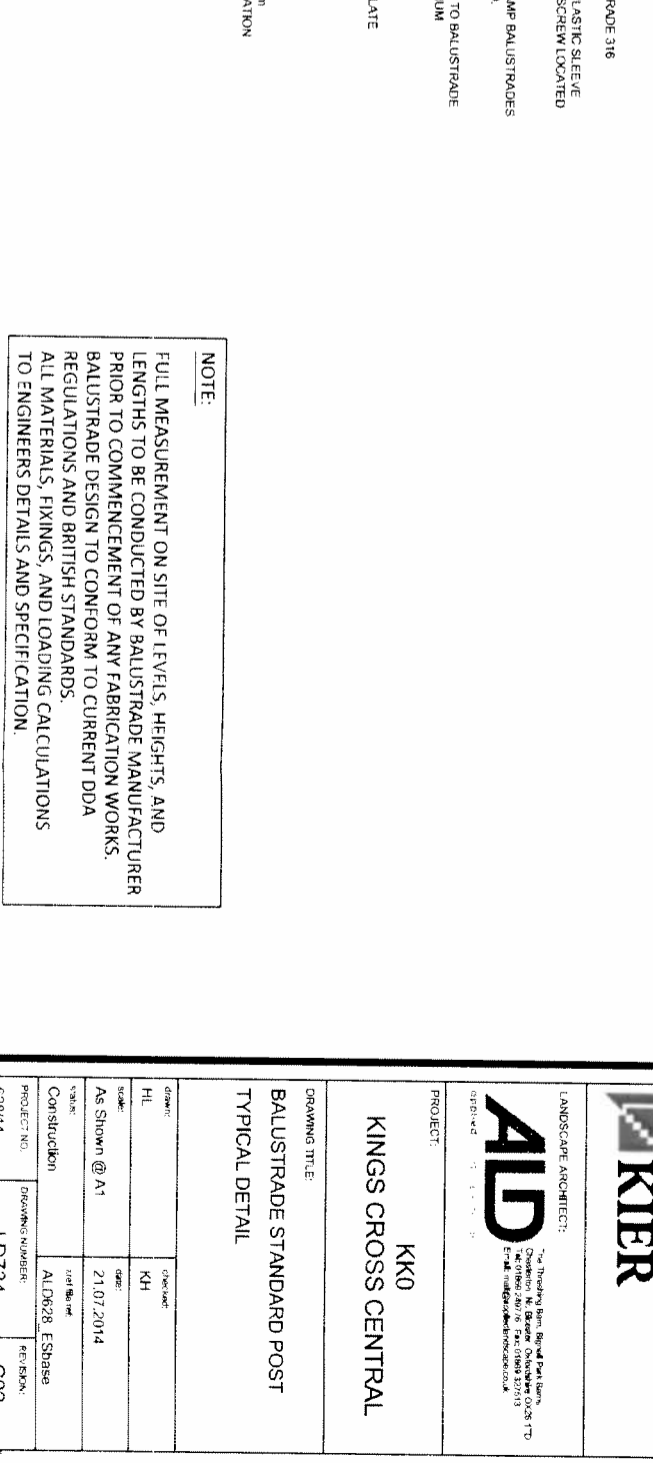
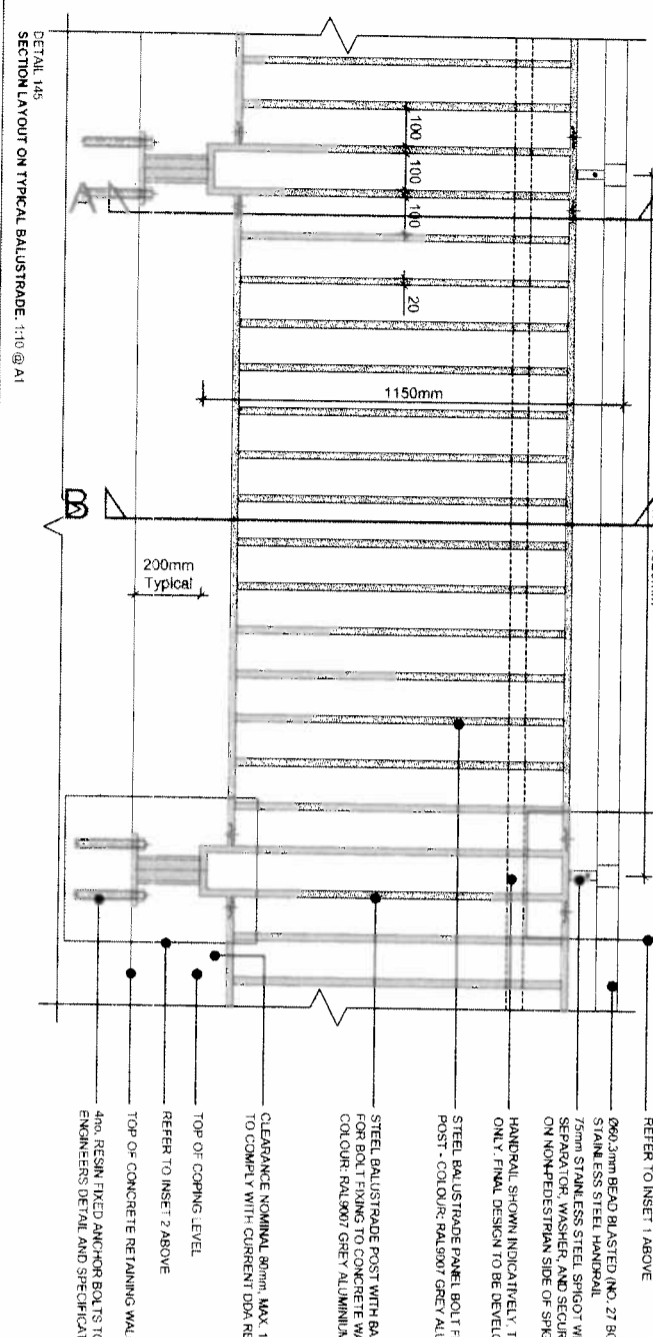
DETAIL 143
 SECTION ELEVATION
 1:10 @ A1

DETAIL 144
 SECTION ELEVATION
 1:10 @ A1



DETAIL 144
 PLAN LAYOUT ON TYPICAL BALUSTRADE: 1:10 @ A1

DETAIL 145
 SECTION LAYOUT ON TYPICAL BALUSTRADE: 1:10 @ A1



DETAIL 145
 SECTION LAYOUT ON TYPICAL BALUSTRADE: 1:10 @ A1

DETAIL 146
 SECTION LAYOUT ON TYPICAL BALUSTRADE: 1:10 @ A1

NOTE:
 FULL MEASUREMENT ON SITE OF LEVELS, HEIGHTS, AND LENGTHS TO BE CONDUCTED BY BALUSTRADE MANUFACTURER PRIOR TO COMMENCEMENT OF ANY FABRICATION WORKS. BALUSTRADE DESIGN TO CONFORM TO CURRENT DDA REGULATIONS AND BRITISH STANDARDS. ALL MATERIALS, FIXINGS, AND LOADING CALCULATIONS TO ENGINEERS DETAILS AND SPECIFICATION.

<p>ALD628 RA901 © 2014 Arup Ltd. All rights reserved. This drawing is the property of Arup Limited. It is not to be used for any other project without the written consent of Arup Limited. The information contained herein is confidential and its disclosure to any third party without the prior written consent of Arup Limited is strictly prohibited.</p>																			
<p>CLIENT: KIER</p>																			
<p>LANDSCAPE ARCHITECT: AID 10, The Quadrant, Brighton, East Sussex, BN1 1QD Tel: +44 (0)1273 252277 Fax: +44 (0)1273 252278 E-mail: info@aid-architects.co.uk</p>																			
<p>PROJECT: KKO KINGS CROSS CENTRAL</p>																			
<p>DRAWING TITLE: BALUSTRADE STANDARD POST TYPICAL DETAIL</p>																			
<p>DATE: 21.07.14</p>																			
<p>SCALE: As Shown @ A1</p>																			
<p>CONSTRUCTION: ALD628, EShape</p>																			
<p>PROJECT NO.: LD734</p>																			
<p>DRAWING NUMBER: C02</p>																			
<p>DATE: 21.07.14</p>																			
<p>ISSUED BY: [Signature]</p>																			
<p>DATE: 21.07.14</p>																			
<p>REVISIONS:</p> <table border="1"> <tr> <th>NO.</th> <th>ISSUED</th> <th>DATE</th> </tr> <tr> <td>001</td> <td>Issue for Construction</td> <td>21.07.14</td> </tr> <tr> <td>002</td> <td>Approval of material finishes</td> <td>21.07.14</td> </tr> <tr> <td>003</td> <td>Final Issue for Construction</td> <td>02.08.14</td> </tr> <tr> <td>004</td> <td>After specification changes</td> <td>02.08.14</td> </tr> <tr> <td>005</td> <td>Issued for Contractor Proposal</td> <td>21.07.14</td> </tr> </table>		NO.	ISSUED	DATE	001	Issue for Construction	21.07.14	002	Approval of material finishes	21.07.14	003	Final Issue for Construction	02.08.14	004	After specification changes	02.08.14	005	Issued for Contractor Proposal	21.07.14
NO.	ISSUED	DATE																	
001	Issue for Construction	21.07.14																	
002	Approval of material finishes	21.07.14																	
003	Final Issue for Construction	02.08.14																	
004	After specification changes	02.08.14																	
005	Issued for Contractor Proposal	21.07.14																	
<p>REFERENCE DOCUMENTS:</p> <table border="1"> <tr> <td>ALD628_LD734-738</td> <td>Balustrade Details</td> </tr> <tr> <td>ALD628_ES902-903</td> <td>Retaining Wall and Balustrade Elevations</td> </tr> <tr> <td>ALD628_LD706</td> <td>Balustrade Fixing Hardware</td> </tr> <tr> <td>ALD628_HL101-104</td> <td>Hard Landscape General Arrangements (1-4)</td> </tr> </table>		ALD628_LD734-738	Balustrade Details	ALD628_ES902-903	Retaining Wall and Balustrade Elevations	ALD628_LD706	Balustrade Fixing Hardware	ALD628_HL101-104	Hard Landscape General Arrangements (1-4)										
ALD628_LD734-738	Balustrade Details																		
ALD628_ES902-903	Retaining Wall and Balustrade Elevations																		
ALD628_LD706	Balustrade Fixing Hardware																		
ALD628_HL101-104	Hard Landscape General Arrangements (1-4)																		