

Landmark Trees

**Site:** 44 & 44a Gloucester Avenue NW1 8JD

**Date:** 30 October 2014

## Appendix 3

**Surveyor(s):** Adam Hollis

**Ref:** CHP/44GLA/AIS

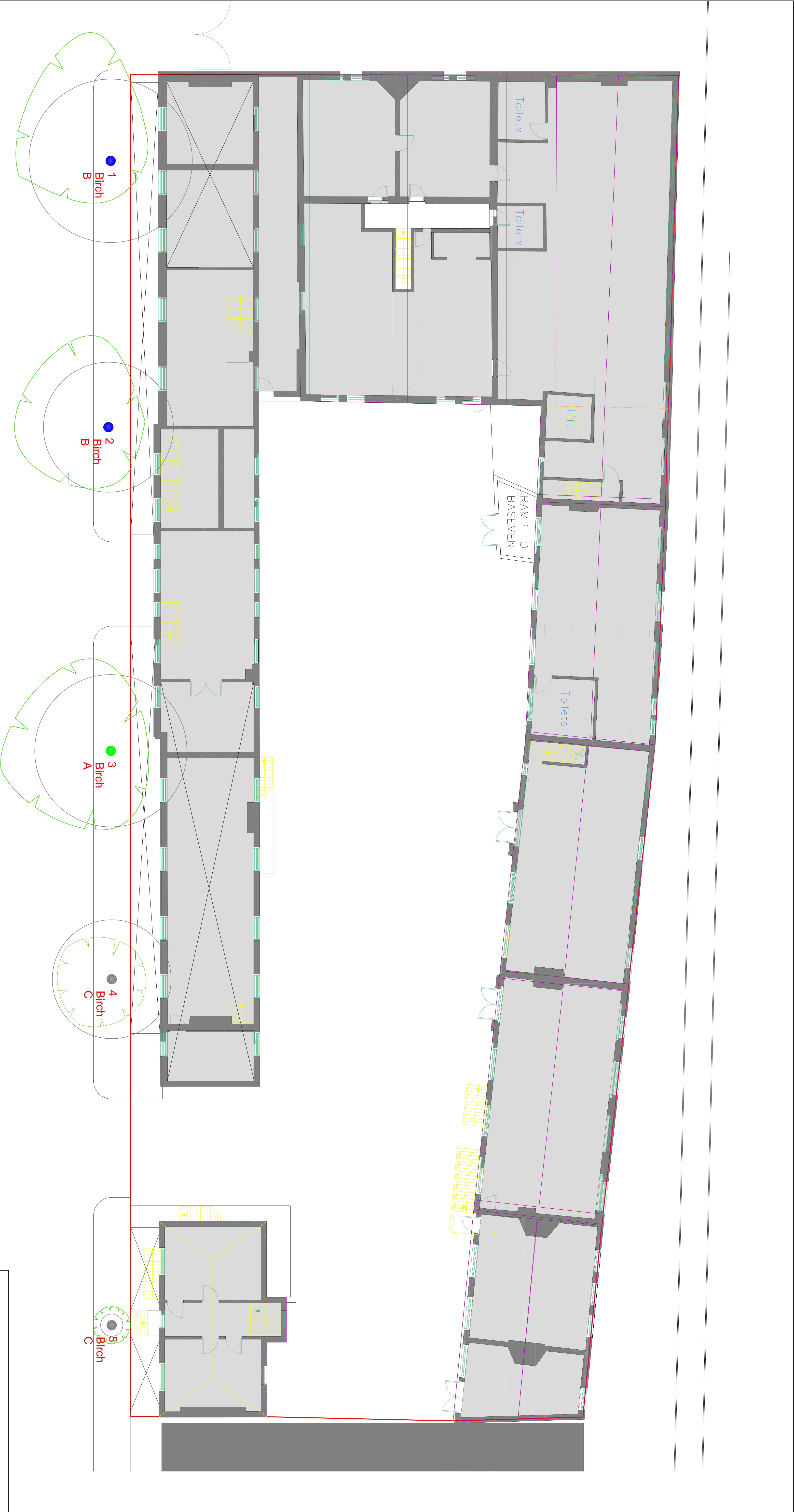
### Recommended Tree Works To Facilitate Development

Hide irrelevant


Show All Trees

Tree No.	English Name	B.S. Cat	Height	Ground Clearance	Crown Spread	Recommended Works	Comments/ Reasons
3	Birch, Himalyan	A	12	3.5	2,6,4,4. 5	CB Minor trim 300 - 500 mm	Asymmetry (minor) Leaning (slightly) to road To facilitate development

**APPENDIX 4****TREE CONSTRAINTS PLAN**

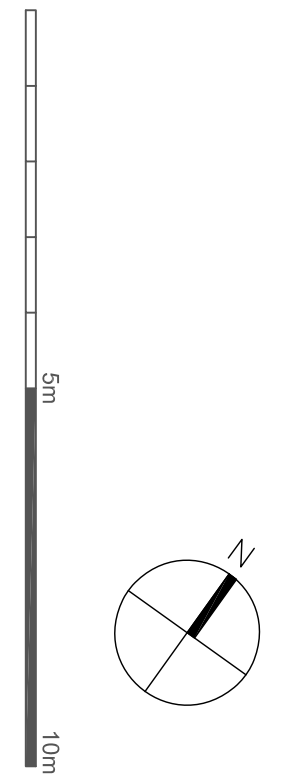


NOTE:  
This survey is of a preliminary nature. The trees were inspected from the ground only and no decay detection equipment was employed. The survey does not cover the arrangements that may be required in connection with the felling or removal of underground services.  
Branch spread in nature is taken at the four cardinal points to derive an accurate representation of the crown.  
Root Protection Areas (RPA) are derived from stem diameter measured at 1.5 m above adjacent ground level (taken on sloping ground on the upslope side of the tree base).



**Landmark Trees**  
20 Broadwick Street, London, W1F 8HT  
Tel: 0207 893 4544 Mobile: 07812 889928  
Email: info@landmarktrees.co.uk Web: www.landmarktrees.co.uk

Drawing Title: Tree Constraints Plan		December 2014
--------------------------------------	--	---------------




- Key:
- Category A
  - High Quality
  - Category B
  - Medium Quality
  - Category C
  - Low Quality
  - Category U
  - Trees Unsuitable for Retention
- Category
- Root Protection Area
  - Tree Number
  - Species
  - Category
  - Tree Position Approximate (not shown on original survey)

**APPENDIX 5****ARBORICULTURAL IMPACT ASSESSMENT PLAN**



NOTE:  
This survey is of a preliminary nature. The trees were inspected from the ground only and no decay detection equipment was employed. The survey does not cover the arrangements that may be required in connection with the laying or removal of underground services.  
Branch spread in nature is taken at the four cardinal points to derive an accurate representation of the crown.  
Root Protection Areas (RPA) are derived from stem diameter measured at 1.5 m above adjacent ground level (taken on sloping ground on the upslope side of the tree base).



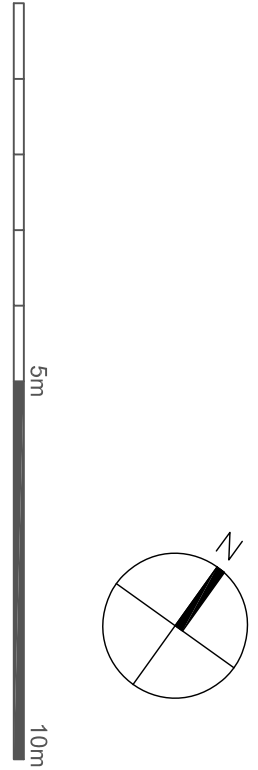
**Landmark Trees**  
20 Broadwick Street, London, W1F 8HT  
Tel: 0207 893 4544 Mobile: 07812 889928  
Email: info@landmarktrees.co.uk Web: www.landmarktrees.co.uk

Site: 44 Gloucester Avenue

December 2014

Drawing Title: Arboricultural Impacts Assessment

1:100@ A1



Category A

High Quality

Category B

Medium Quality

Category C

Low Quality

Category U

Trees Unsuitable for Retention

Category

Protection Area

Tree Position Approximate (not shown on original survey)

Crown Spread

Tree Number

Species

Category

**APPENDIX 6****TREE PROTECTION PLAN**






NOTE:

This survey is of a preliminary nature. The trees were inspected from the ground only on the basis of the Visual Tree Assessment method. No samples were taken for analysis. No decay detection equipment was employed. The survey does not cover the arrangements that may be required in connection with the felling or removal of underground services.

Branch spread in metres is taken at the four cardinal points to derive an accurate representation of the crown.

Root Protection Areas (RPA) are derived from stem diameter measured at 1.5 m above adjacent ground level (taken on sloping ground on the upslope side of the tree base).



Landmark Trees

20 Brooklands Street, London, W14 6HT  
Tel: 0207 851 4544 Mobile: 07812 889928  
e-mail: info@landmarktrees.co.uk Web: www.landmarktrees.co.uk

Site: 44 Gloucester Avenue

Drawing Title: Tree protection Plan

1:100@ A1  
December 2014

Key:

Category A  
High Quality

Category B  
Moderate Quality

Category C  
Low Quality

Category U  
Trees Unsuitable for Retention

Prescriptive areas: assumed not to be affected by any proposed works

Prescriptive areas: assumed not to be affected by any proposed works

Prescriptive areas: assumed not to be affected by any proposed works

Prescriptive areas: assumed not to be affected by any proposed works

Crown Spread

Tree Number

Species

Category

Tree Position Approximate (not shown on original survey)

Tree Protection Fencing