

FURNITURE SPECIFICATION



- EXTERNAL SIDE CHAIR
- Materials: Polypropylene shell and powder coated aluminium frame
  - Finishes: Red
  - Height: 800mm
  - Width: 530mm
  - Depth: 520mm
  - Seat Height: 480mm



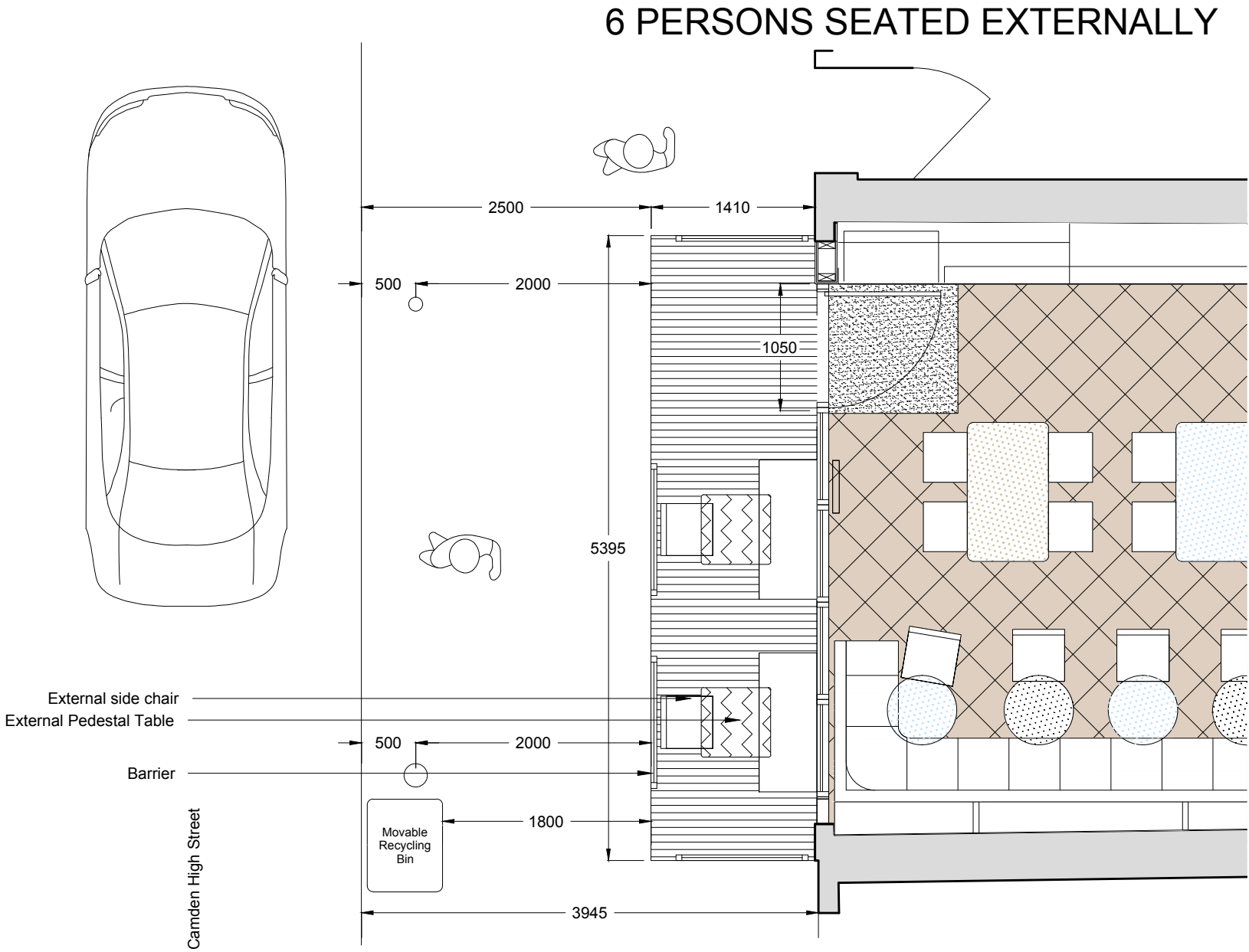
- EXTERNAL PEDESTAL TABLE
- Materials: Composite table top and powder coated aluminium frame
  - Finishes: Grey
  - Height: 750mm
  - Width: 600mm
  - Depth: 600mm



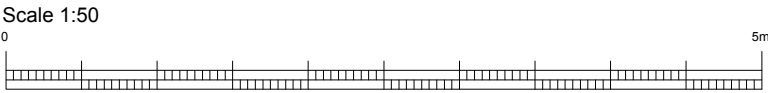
- BARRIER
- Material: Metal frame
  - Height: 900mm
  - Width: 1200mm
  - Depth: 50mm



- EXTERNAL BENCH
- Material: Timber
  - Height: 500mm
  - Width: 1200mm
  - Depth: 500mm



PROPOSED EXTERNAL PLAN  
SCALE 1:50



REV	DATE	NOTES	INT	Project title	Scale @ A3
1	13.08.14	First Issue	MG	Chilango Camden High Street	1:50
2	19.08.14	Furniture amended	MG		
3	13.10.14	Dimensions added to street furniture, recycling bin position adjusted to relate to current site layout.	MH	Drawing title	Drawn
		Updated following planners comments	GH	Proposed External Plan	MG
4	20.02.15			Drawing no.	Checked
				14010_GA_010	BM