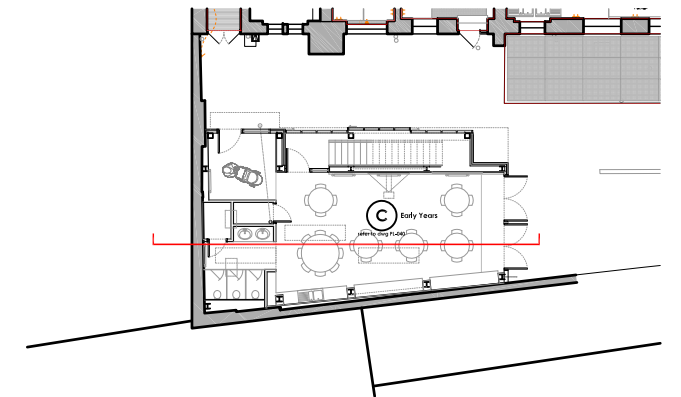


The scaling of this drawing cannot be assured

Revision	Date	Drn	Ckd
Rev A - General amendments made	14.01.15	AB	TC
Rev B - General amendments made	23.02.15	AB	TC
Rev C - Door arrangement changes	27.02.15	AB	TC
Rev D - Levels raised 150mm	05.03.15	AB	TC



Legend

1. polycarbonate cladding (Danpalon Everlite single skin 22mm)
2. cavity/packing
3. existing wall
4. existing railings
5. 2400x600mm skylight
6. decking on adjustable stools
7. single ply membrane
8. 140mm insulation laid to falls
9. CGL cometech PPC aluminium coping
10. non slip vinyl flooring
11. 75mm screed
12. 75mm insulation
13. pinboard
14. existing smart whiteboard reused, projector and speakers
15. LED lighting (as per M&E specification)
16. plasterboard ceiling with allowance for perforations
17. laminate faced doors and frame
18. plasterboard dropped ceiling containing servicing and lighting
19. vanity unit and wash basins reused
20. glazed door and side window leading to stair

PLANNING

Project

St Joseph's Primary School
Holborn

Drawing Title

Proposed Section
Early Years Section AA

Date	Scale	Drawn by	Check by
03.11.14	1:50@A3	AB	TC
Project No	Drawing No	Revision	
23171	SE-042	D	

**BARTON
WILLMORE**

Planning • Master Planning & Urban Design
Architecture • Landscape Planning & Design • Project Services
Environmental & Sustainability Assessment • Graphic Design

bartonwillmore.co.uk



Offices at Reading London Bristol Cambridge Cardiff Ebbsfleet Edinburgh Leeds Manchester Solihull