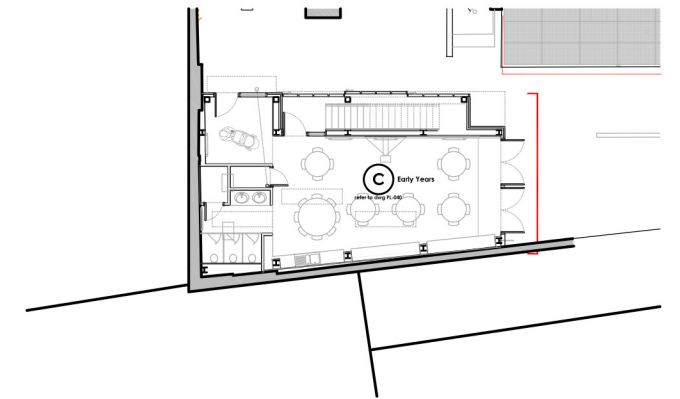


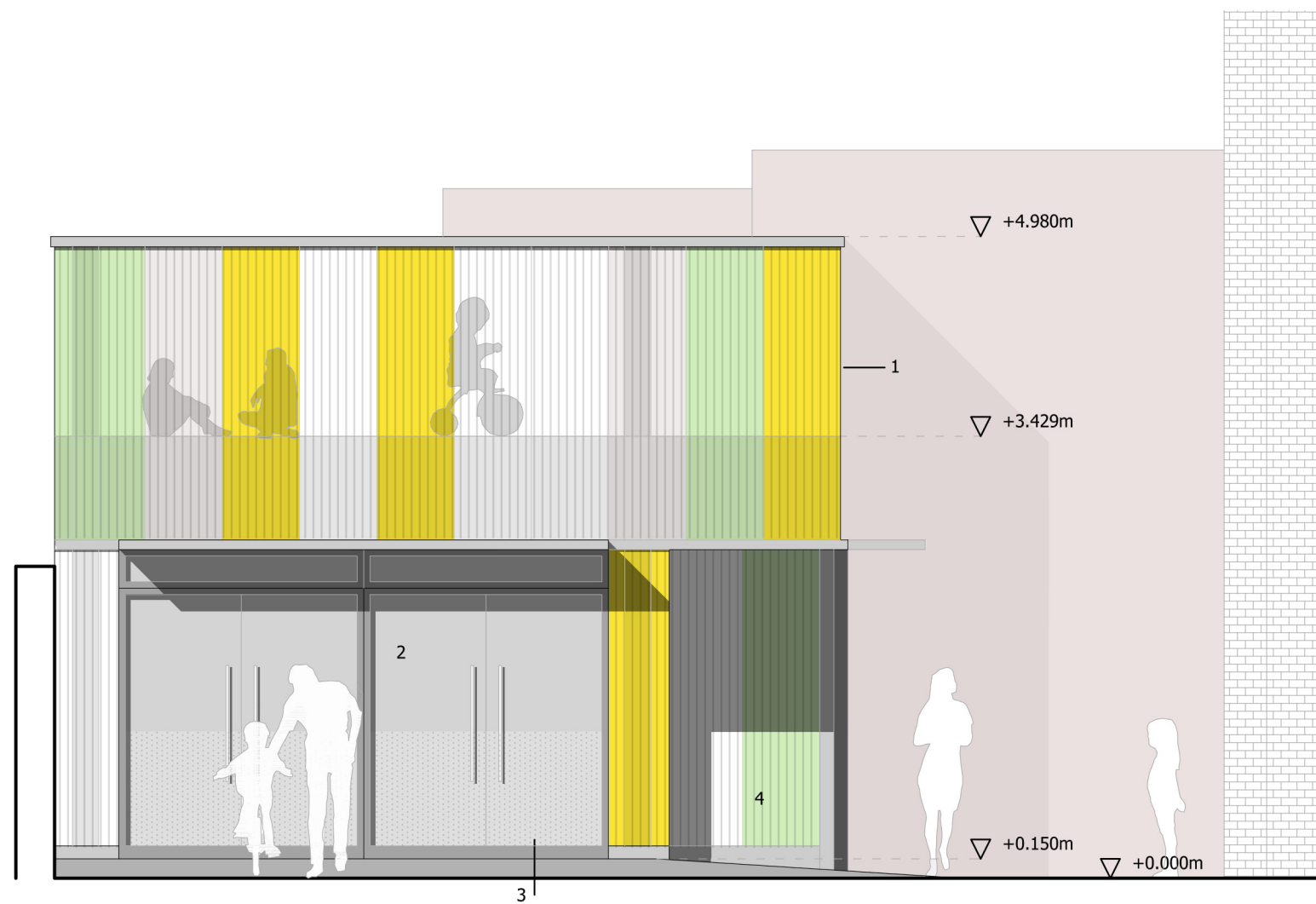
The scaling of this drawing cannot be assured

Revision	Date	Drn	Ckd
Rev A - General amendments made	23.02.15	AB	TC
Rev B - New build amendments	25.02.15	AB	TC
Rev C - Door arrangement changes	27.02.15	AB	TC
Rev D - Levels raised 150mm	05.03.15	AB	TC



**Legend**

1. polycarbonate cladding (Danpalon Everlite single skin 22mm)
2. 1800mm wide double glazed doors
3. etched glazed film
4. recess under stair landing



# PLANNING

Project  
**St Joseph's Primary School**  
 Holborn

Drawing Title  
**Proposed Section**  
**Early Years Elevation 2**

Date	Scale	Drawn by	Check by
16.01.15	1:50@A3	AB	TC
Project No	Drawing No	Revision	
23171	EL-046	D	

**BARTON  
 WILLMORE**

Planning • Master Planning & Urban Design  
 Architecture • Landscape Planning & Design • Project Services  
 Environmental & Sustainability Assessment • Graphic Design

bartonwillmore.co.uk



Offices at Reading London Bristol Cambridge Cardiff Ebbsfleet Edinburgh Leeds Manchester Solihull