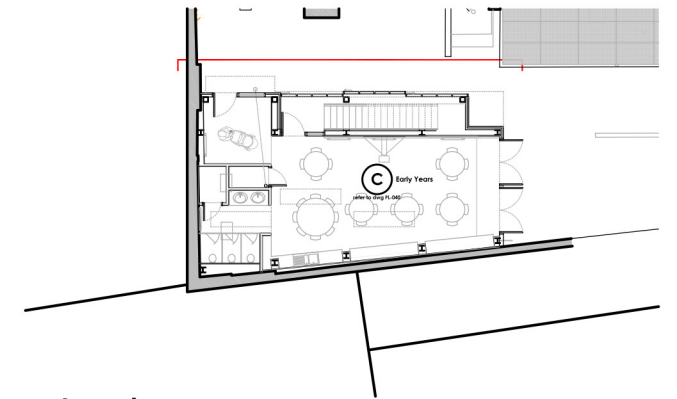


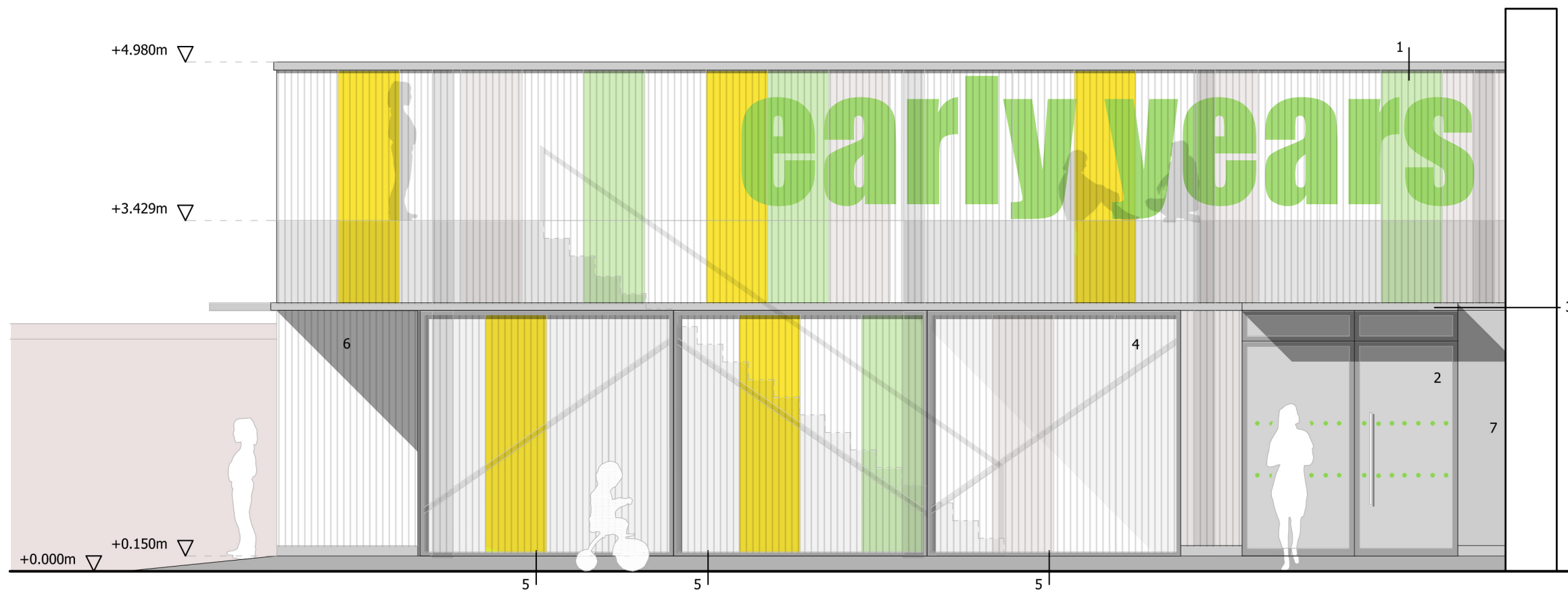
The scaling of this drawing cannot be assured

Revision	Date	Drn	Ckd
Rev A - General amendments made	23.02.15	AB	TC
Rev B - New build amendments	25.02.15	AB	TC
Rev C - Door arrangement changes	27.02.15	AB	TC
Rev D - Levels raised 150mm	05.03.15	AB	TC



Legend

1. polycarbonate cladding (Danpalon Everlite single skin 22mm)
2. double glazed curtain walling system with door
3. 600mm deep canopy
4. secondary entrance for roof top playground
5. sliding store door (Danpalon Everlite single skin 22mm or less)
6. Recess under stair landing
7. Side panel with integrated flue extract



PLANNING

Project
St Joseph's Primary School
 Holborn

Drawing Title
Proposed Section
Early Years Elevation 1

Date	Scale	Drawn by	Check by
16.01.15	1:50@A3	AB	TC

Project No	Drawing No	Revision
23171	EL-045	D



Planning • Master Planning & Urban Design
 Architecture • Landscape Planning & Design • Project Services
 Environmental & Sustainability Assessment • Graphic Design

bartonwillmore.co.uk



Offices at Reading London Bristol Cambridge Cardiff Ebbsfleet Edinburgh Leeds Manchester Solihull