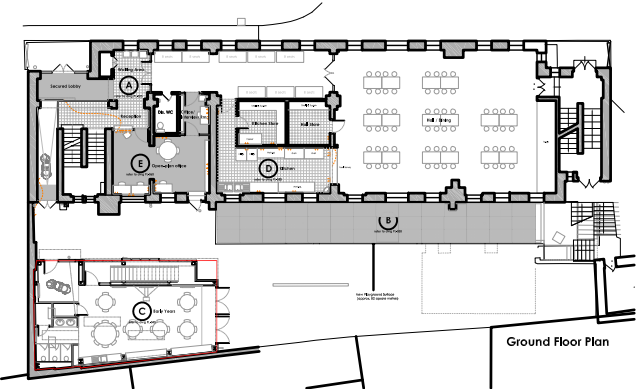


The scaling of this drawing cannot be assured

Revision	Date	Drn	Ckd
Rev A - General amendments made	14.01.15	AB	TC
Rev B - Drainage amendments made	28.01.15	AB	TC
Rev C - General amendments made	23.02.15	AB	TC
Rev D - Door arrangement changes	27.02.15	AB	TC



Legend

- 1. polycarbonate cladding (Danpalon Everlite single skin 22mm)
- 2. cavity/packing
- 3. 203x203x46 UC
- 4. existing wall below
- 5. 2400x600mm skylight with sandblasted/etched glazing
- 6. external storage
- 7. suitable flooring TBC
- 8. planter
- 9. 600mm deep canopy
- 10. drainage downpipe
- 11. drainage gully under deck

PLANNING



Project  
St Joseph's Primary School  
Holborn

Drawing Title  
Proposed Plans  
Early Years Roof Playground

Date 03.11.14	Scale 1:50@A3	Drawn by AB	Check by TC
Project No 23171	Drawing No PL-041	Revision D	

**BARTON  
WILLMORE**

Planning • Master Planning & Urban Design  
Architecture • Landscape Planning & Design • Project Services  
Environmental & Sustainability Assessment • Graphic Design

bartonwillmore.co.uk



Offices at Reading London Bristol Cambridge Cardiff Ebbsfleet Edinburgh Leeds Manchester Solihull