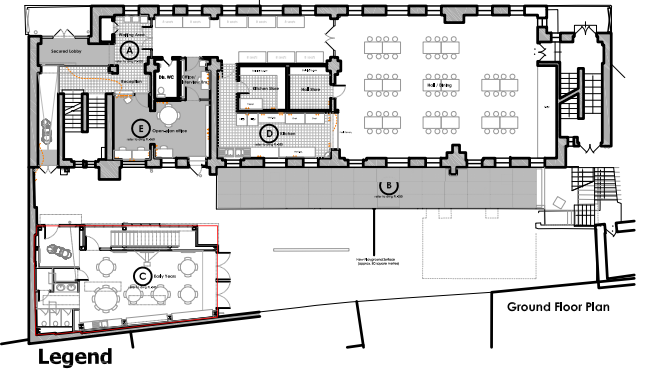


The scaling of this drawing cannot be assured

Revision	Date	Drn	Ckd
Rev A - General amendments made	14.01.15	AB	TC
Rev B - Drainage amendments made	28.01.15	AB	TC
Rev C - General amendments made	23.02.15	AB	TC
Rev D - Door arrangement changes	27.02.15	AB	TC



1. glazed curtain walling system
2. polycarbonate cladding (Danpalon Everlite single skin 22mm)
3. fiberboard cladding with internal plasterboard finish
4. 203x203x46 UC
5. existing wall left exposed and repainted
6. 1800mm double doors
7. existing cubicles and pans reused
8. existing wash basins reused
9. shower room
10. service/boiler cupboard
11. cloakroom
12. covered stair to rooftop playground
13. external storage under stair
14. existing smart whiteboard, projector and speakers reused
15. 1000mm diameter table
16. high and low level storage units (by client)
17. sink (new)
18. washing machine (reuse?)
19. shelves
20. polycarbonate sliding doors
21. radiator
22. roof drainage downpipe
23. existing drainage
24. laminate faced doors and frame
25. overhead flue extract
26. potential location of drainage point (from historical plan)

Project

St Joseph's Primary School
Holborn

Drawing Title

Proposed Plans
Early Years Classroom

Date	Scale	Drawn by	Check by
03.11.14	1:50@A3	AB	TC
Project No	Drawing No	Revision	
23171	PL-040	D	

**BARTON
WILLMORE**

Planning • Master Planning & Urban Design
Architecture • Landscape Planning & Design • Project Services
Environmental & Sustainability Assessment • Graphic Design

bartonwillmore.co.uk



Offices at Reading London Bristol Cambridge Cardiff Ebbsfleet Edinburgh Leeds Manchester Solihull