

Revisions					
P8	Planning submission	MK	LK	LB Camden	19.02.2015
Rev.	Description	Drawn	Check	Issued to	Date Issued

Notes

© Carmody Groarke Ltd.

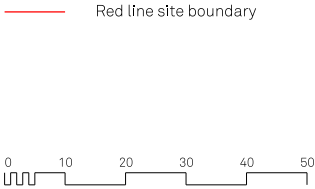
Do not scale from drawings.

Errors to be reported immediately to the Architect.

To be read in conjunction with all relevant Architects', Services and Structural Engineers' drawings.

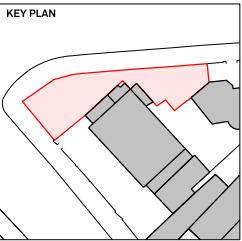
All existing site, tree and building information has been compiled from different sources.

All dimensions to be checked on site.



**CARMODY
GROARKE**

62-70 Shorts Gardens
London, WC2H 9AH
T + 44 (0) 20 7836 2333
www.carmodygroarke.com



Project		Haverstock Hill		Project No.	
				126	
Client		E Sharon Group (Management) Ltd.			
Date	February 2015	Drawn	MK	Issue	
Scale / Format	1:1250@A3	Checked	LK	P8	
CAD Reference	P:\Projects\XXCAD\sheets	Approved	KC		
Drawing Name	Proposed site plan	Drawing No.	126_P_10_01		



Revisions				
P8	Planning submission	MK	LK	LB Camden
19.02.2015				
Rev.	Description	Drawn	Check	Issued to
Date Issued				

Notes

© Carmody Groarke Ltd.

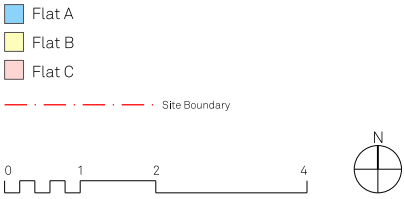
Do not scale from drawings.

Errors to be reported immediately to the Architect.

To be read in conjunction with all relevant Architects', Services and Structural Engineers' drawings.

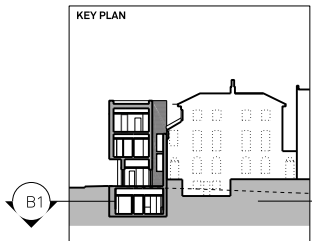
All existing site, tree and building information has been compiled from different sources.

All dimensions to be checked on site.



**CARMODY
GROARKE**

62-70 Shorts Gardens
London, WC2H 9AH
T + 44 (0) 20 7836 2333
www.carmodygroarke.com



Project	Haverstock Hill	Project No.	126
Client	E Sharon Group (Management) Ltd.		
Date	February 2015	Drawn	MK
Scale / Format	1:100@A3	Checked	LK
CAD Reference	P/Projects/XXCAD/sheets	Approved	KC
Drawing Name	Proposed basement	Drawing No.	126_P_21_01



Revisions				
P8	Planning submission	MK	LK	LB Camden
19.02.2015				
Rev.	Description	Drawn	Check	Issued to
				Date Issued

Notes

© Carmody Groarke Ltd.

Do not scale from drawings.

Errors to be reported immediately to the Architect.

To be read in conjunction with all relevant Architects', Services and Structural Engineers' drawings.

All existing site, tree and building information has been compiled from different sources.

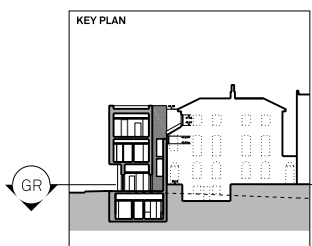
All dimensions to be checked on site.

- Flat A
- Flat B
- Flat C
- Site Boundary

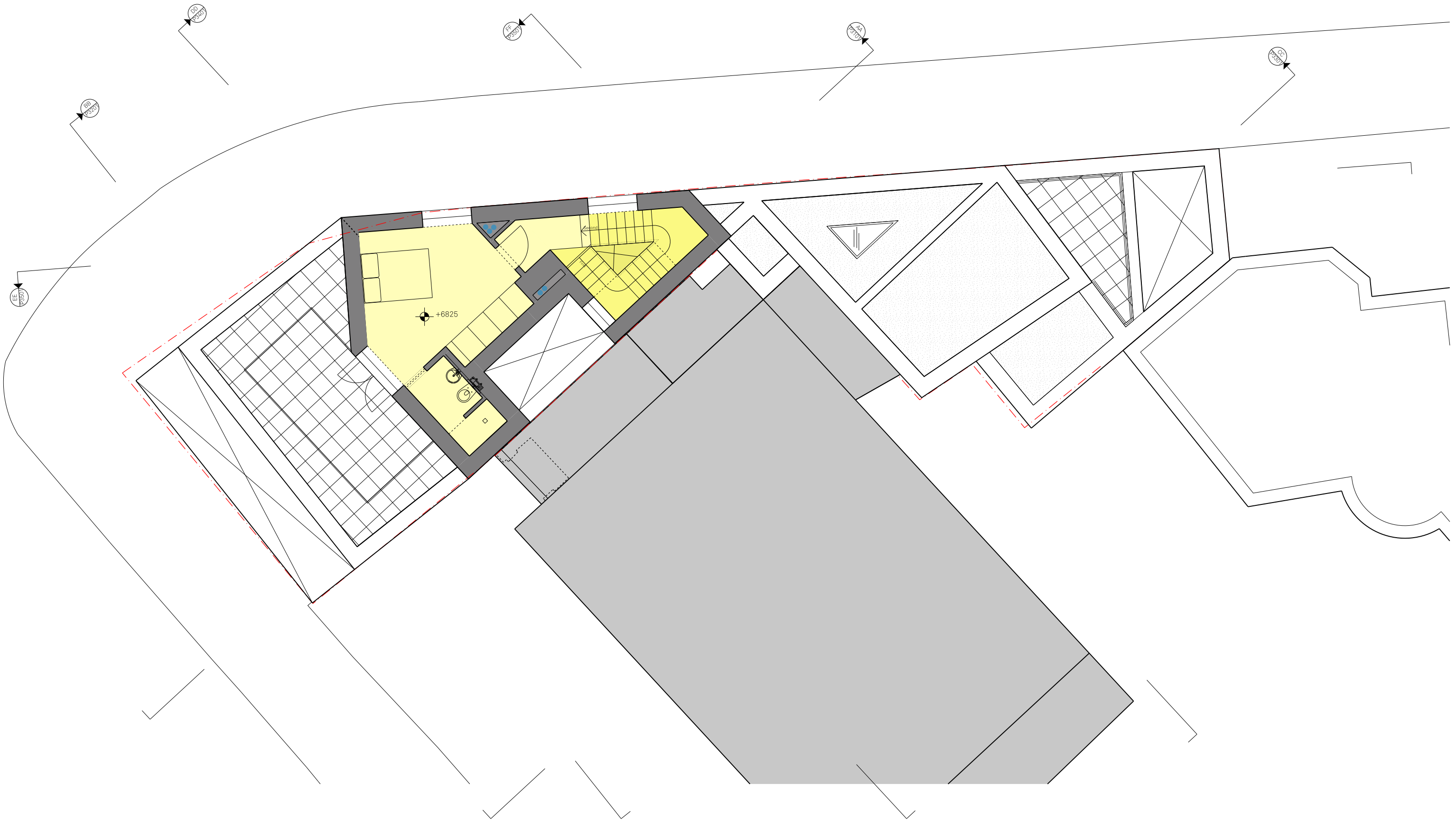


**CARMODY
GROARKE**

62-70 Shorts Gardens
London, WC2H 9AH
T + 44 (0) 20 7836 2333
www.carmodygroarke.com



Project		Haverstock Hill		Project No.	
				126	
Client		E Sharon Group (Management) Ltd.			
Date	February 2015	Drawn	MK	Issue	
Scale / Format	1:100@A3	Checked	LK	P8	
CAD Reference	P/Projects/XXCAD/sheets	Approved	KC		
Drawing Name	Proposed ground floor	Drawing No.	126_P_22_01		



Revisions					
P8	Planning submission	MK	LK	LB Camden	19.02.2015
Rev.	Description	Drawn	Check	Issued to	Date Issued

Notes

© Carmody Groarke Ltd.

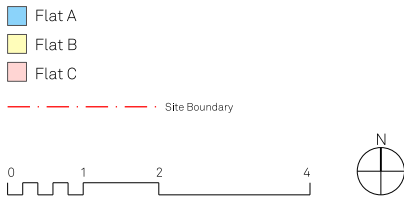
Do not scale from drawings.

Errors to be reported immediately to the Architect.

To be read in conjunction with all relevant Architects', Services and Structural Engineers' drawings.

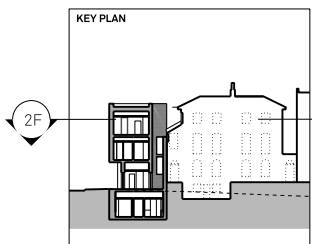
All existing site, tree and building information has been compiled from different sources.

All dimensions to be checked on site.



**CARMODY
GROARKE**

62-70 Shorts Gardens
London, WC2H 9AH
T + 44 (0) 20 7836 2333
www.carmodygroarke.com



Project		Haverstock Hill		Project No.	
				126	
Client		E Sharon Group (Management) Ltd.			
Date	February 2015	Drawn	MK	Issue	
Scale / Format	1:100@A3	Checked	LK	P8	
CAD Reference	P/Projects/XXCAD/sheets	Approved	KC		
Drawing Name	Proposed second floor	Drawing No.	126_P_24_01		



Revisions					
P2	Planning submission	MK	LK	LB Camden	19.02.2015
Rev.	Description	Drawn	Check	Issued to	Date Issued

Notes

© Carmody Groarke Ltd.

Do not scale from drawings.

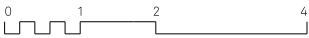
Errors to be reported immediately to the Architect.

To be read in conjunction with all relevant Architects', Services and Structural Engineers' drawings.

All existing site, tree and building information has been compiled from different sources.

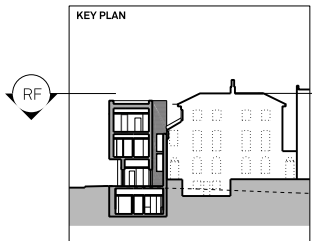
All dimensions to be checked on site.

--- Site Boundary

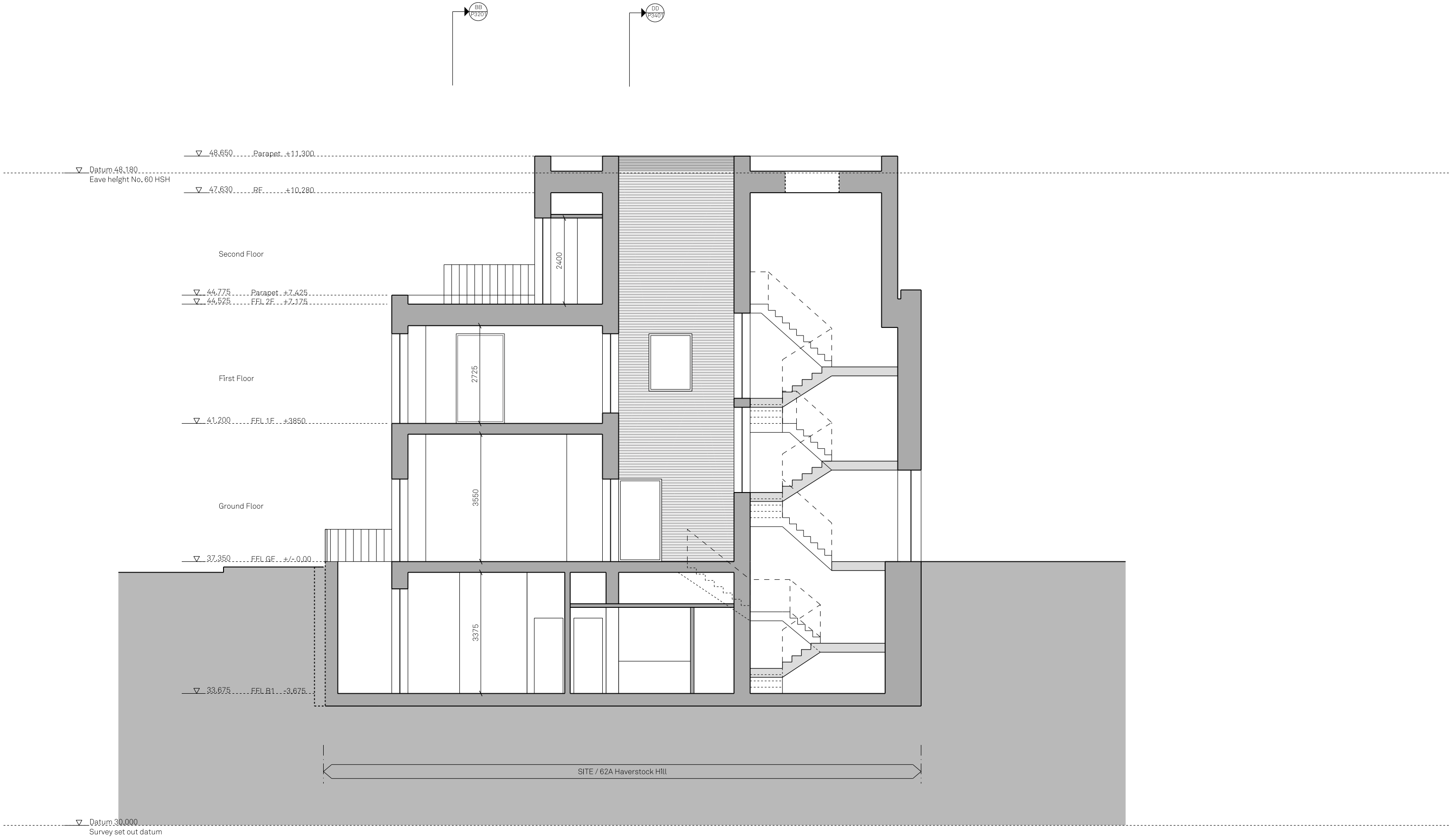


**CARMODY
GROARKE**

62-70 Shorts Gardens
London, WC2H 9AH
T + 44 (0) 20 7836 2333
www.carmodygroarke.com



Project	Haverstock Hill	Project No.	126
Client	E Sharon Group (Management) Ltd.		
Date	February 2015	Drawn	MK
Scale / Format	1:100@A3	Checked	LK
CAD Reference	P:\Projects\XXCAD\sheets	Approved	KC
Drawing Name	Proposed roof plan	Drawing No.	126_P_25_01



Revisions					
P8	Planning submission	MK	LK	LB Camden	19.02.2015
Rev.	Description	Drawn	Check	Issued to	Date Issued

Notes

© Carmody Groarke Ltd.

Do not scale from drawings.

Errors to be reported immediately to the Architect.

To be read in conjunction with all relevant Architects', Services and Structural Engineers' drawings.

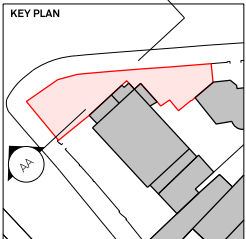
All existing site, tree and building information has been compiled from different sources.

All dimensions to be checked on site.



**CARMODY
GROARKE**

62-70 Shorts Gardens
London, WC2H 9AH
T + 44 (0) 20 7836 2333
www.carmodygroarke.com



Project		Haverstock Hill		Project No.	
				126	
Client		E Sharon Group (Management) Ltd.			
Date	February 2015	Drawn	MK	Issue	
Scale / Format	1:100@A3	Checked	LK	P8	
CAD Reference	P\Projects\XXCAD\sheets	Approved	KC		
Drawing Name	Proposed section AA	Drawing No.	126_P_31_01		



Revisions					
P8	Planning submission	MK	LK	LB Camden	19.02.2015
Rev.	Description	Drawn	Check	Issued to	Date Issued

Notes

© Carmody Groarke Ltd.

Do not scale from drawings.

Errors to be reported immediately to the Architect.

To be read in conjunction with all relevant Architects', Services and Structural Engineers' drawings.

All existing site, tree and building information has been compiled from different sources.
All dimensions to be checked on site.

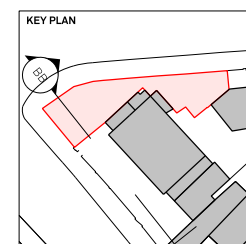


**CARMODY
GROARKE**

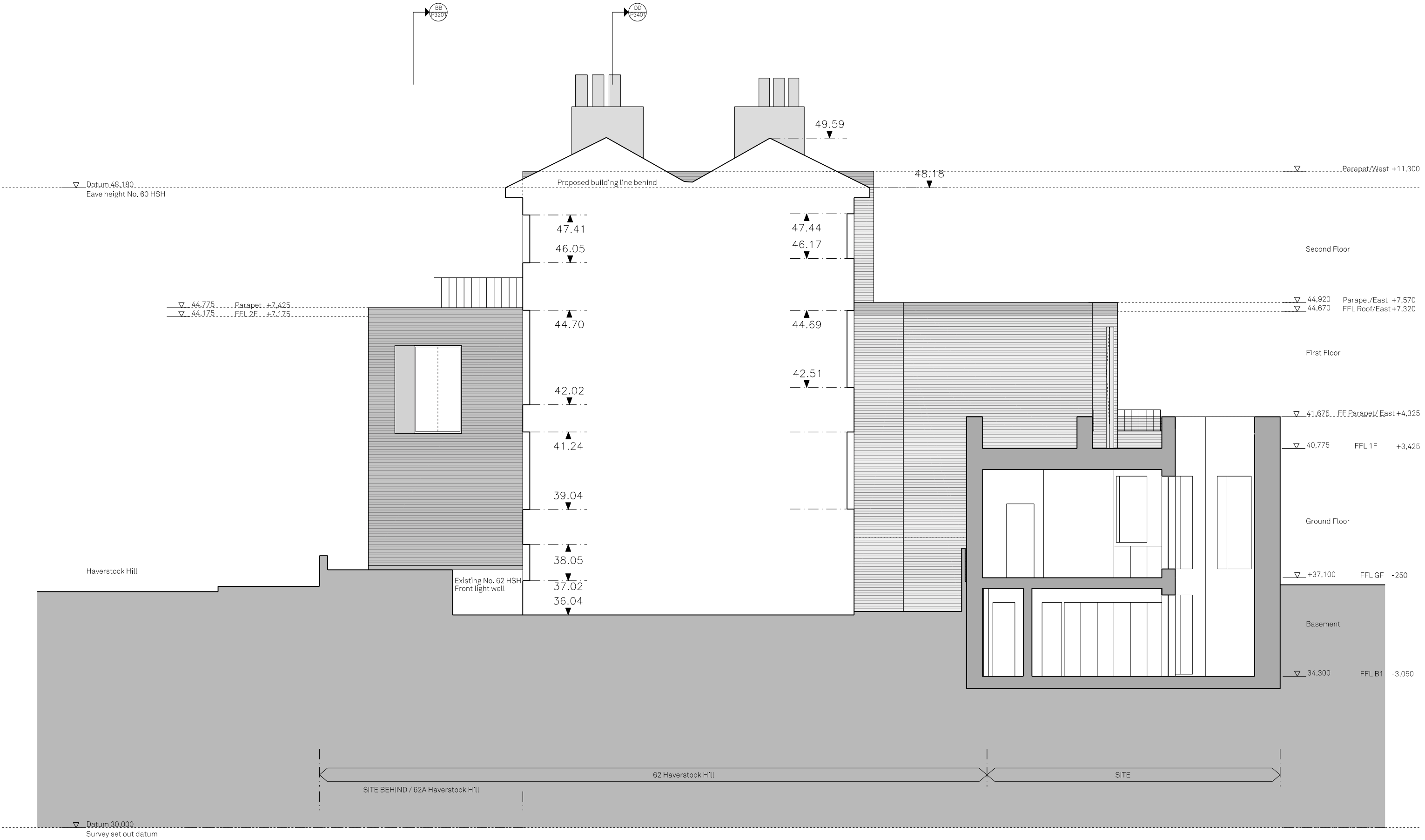
62-70 Shorts Gardens
London, WC2H 9AH

T + 44 (0) 20 7836 2333

www.carmodygroarke.com



Project	Haverstock Hill	Project No.	126
Client	E Sharon Group (Management) Ltd.	Date	February 2015
Scale / Format	1:100@A3	Drawn	MK
CAD Reference	P/Projects/XXCAD/sheets	Checked	LK
Drawing Name	Proposed section BB	Approved	KC
		Drawing No.	126_P_32-01



Revisions					
P8	Planning submission	MK	LK	LB Camden	19.02.2015
Rev.	Description	Drawn	Check	Issued to	Date Issued

Notes

© Carmody Groarke Ltd.

Do not scale from drawings.

Errors to be reported immediately to the Architect.

To be read in conjunction with all relevant Architects', Services and Structural Engineers' drawings.

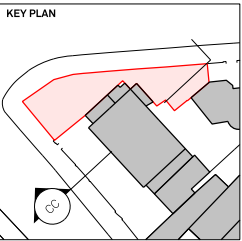
All existing site, tree and building information has been compiled from different sources.

All dimensions to be checked on site.



**CARMODY
GROARKE**

62-70 Shorts Gardens
London, WC2H 9AH
T + 44 (0) 20 7836 2333
www.carmodygroarke.com



Project	Haverstock Hill	Project No.	126
Client	E Sharon Group (Management) Ltd.		
Date	February 2015	Drawn	MK
Scale / Format	1:100@A3	Checked	LK
CAD Reference	P:\Projects\XX\CAD\sheets	Approved	KC
Drawing Name	Proposed section CC	Drawing No.	126_P_33_01



Revisions					
P8	Planning submission	MK	LK	LB Camden	19.02.2015
Rev.	Description	Drawn	Check	Issued to	Date Issued

Notes

© Carmody Groarke Ltd.

Do not scale from drawings.

Errors to be reported immediately to the Architect.

To be read in conjunction with all relevant Architects', Services and Structural Engineers' drawings.

All existing site, tree and building information has been compiled from different sources.
All dimensions to be checked on site.

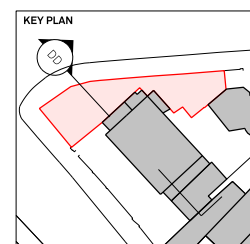


**CARMODY
GROARKE**

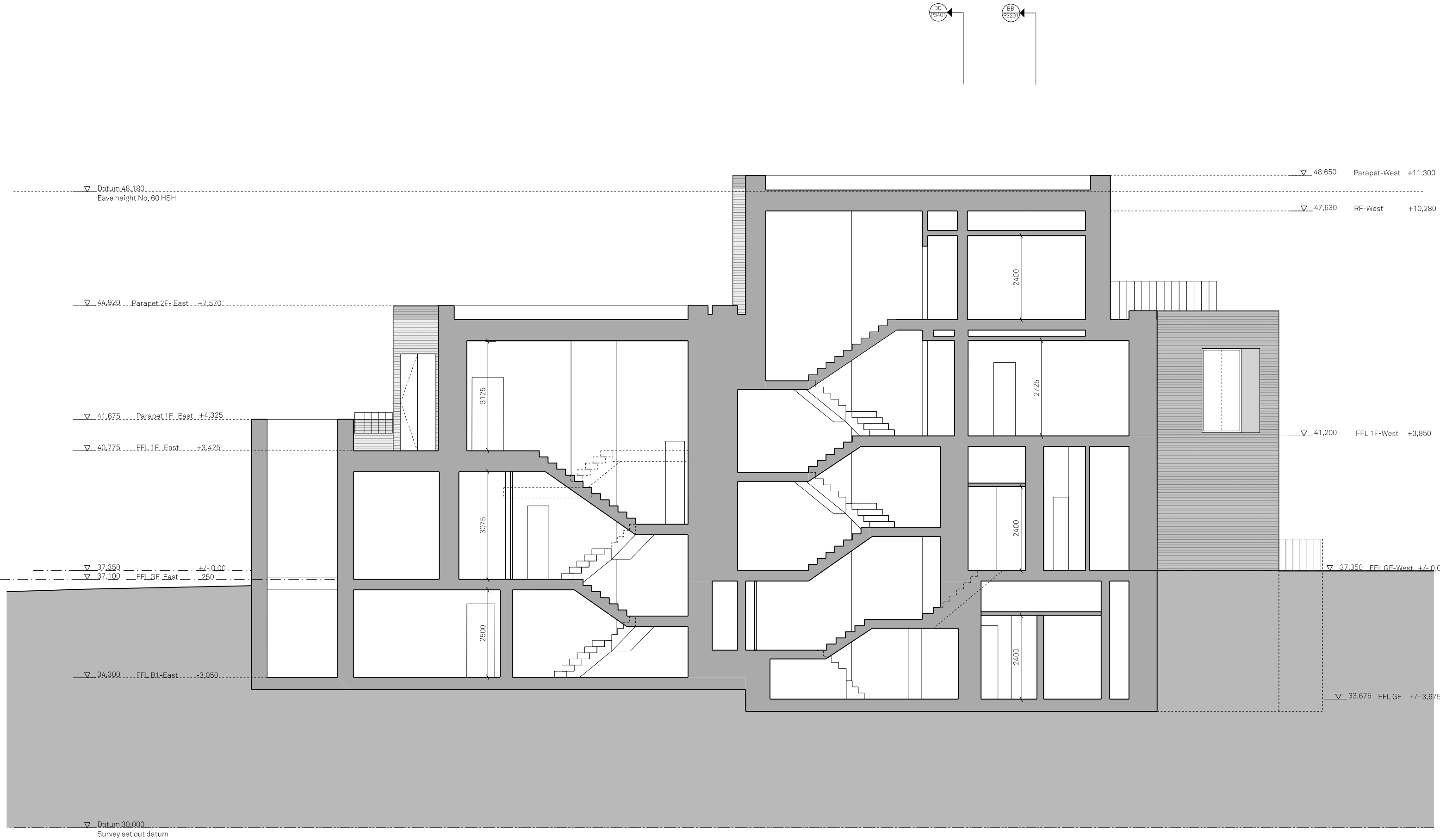
62-70 Shorts Gardens
London, WC2H 9AH

T + 44 (0) 20 7836 2333

www.carmodygroarke.com



Project	Haverstock Hill	Project No.	126
Client	E Sharon Group (Management) Ltd.		
Date	February 2015	Drawn	MK
Scale / Format	1:100@A3	Checked	LK
CAD Reference	P/Projects/XXCAD/sheets	Approved	KC
Drawing Name	Proposed section DD	Drawing No.	126_P_34_0



Revisions					
P8	Planning submission	MK	LK	LB Camden	19.02.2015
Rev.	Description	Drawn	Check	Issued to	Date Issued

Notes

© Carmody Groarke Ltd.

Do not scale from drawings.

Errors to be reported immediately to the Architect.

To be read in conjunction with all relevant Architects', Services and Structural Engineers' drawings.

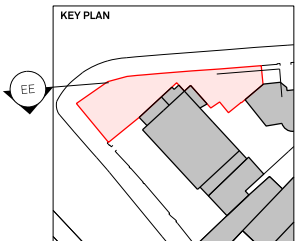
All existing site, tree and building information has been compiled from different sources.

All dimensions to be checked on site.



**CARMODY
GROARKE**

62-70 Shorts Gardens
London, WC2H 9AH
T + 44 (0) 20 7836 2333
www.carmodygroarke.com



Project		Haverstock Hill		Project No.	
				126	
Client		E Sharon Group (Management) Ltd.			
Date	February 2015	Drawn	MK	Issue	
Scale / Format	1:100@A3	Checked	LK	P8	
CAD Reference	P\Projects\XXCAD\sheets	Approved	KC		
Drawing Name	Proposed Section EE	Drawing No.	126_P_35_01		



Revisions					
P8	Planning submission	MK	LK	LB Camden	19.02.2015
Rev.	Description	Drawn	Check	Issued to	Date Issued

Notes

© Carmody Groarke Ltd.

Do not scale from drawings.

Errors to be reported immediately to the Architect.

To be read in conjunction with all relevant Architects', Services and Structural Engineers' drawings.

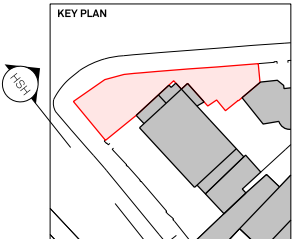
All existing site, tree and building information has been compiled from different sources.

All dimensions to be checked on site.



**CARMODY
GROARKE**

62-70 Shorts Gardens
London, WC2H 9AH
T + 44 (0) 20 7836 2333
www.carmodygroarke.com



Project		Haverstock Hill		Project No.	
				126	
Client		E Sharon Group (Management) Ltd.			
Date	February 2015	Drawn	MK	Issue	
Scale / Format	1:100@A3	Checked	LK	P8	
CAD Reference	P:\Projects\XXCAD\sheets	Approved	KC		
Drawing Name	Proposed elevation HSH	Drawing No.	126_P_41_01		



Revisions					
P8	Planning submission	MK	LK	LB Camden	19.02.2015
Rev.	Description	Drawn	Check	Issued to	Date Issued

Notes

© Carmody Groarke Ltd.

Do not scale from drawings.

Errors to be reported immediately to the Architect.

To be read in conjunction with all relevant Architects', Services and Structural Engineers' drawings.

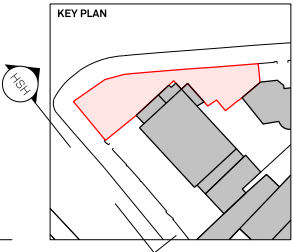
All existing site, tree and building information has been compiled from different sources.

All dimensions to be checked on site.



CARMODY
GROARKE

62-70 Shorts Gardens
London, WC2H 9AH
T + 44 (0) 20 7836 2333
www.carmodygroarke.com



Project		Haverstock Hill		Project No.	
				126	
Client		E Sharon Group (Management) Ltd.			
Date	February 2015	Drawn	MK	Issue	
Scale / Format	1:500@A3	Checked	LK	P8	
CAD Reference	P/Projects/XXCAD/sheets	Approved	KC		
Drawing Name	Proposed elevation HSH	Drawing No.	126_P_41_21		



Revisions					
P8	Planning submission	MK	LK	LB Camden	19.02.2015
Rev.	Description	Drawn	Check	Issued to	Date Issued

Notes

© Carmody Groarke Ltd.

Do not scale from drawings.

Errors to be reported immediately to the Architect.

To be read in conjunction with all relevant Architects', Services and Structural Engineers' drawings.

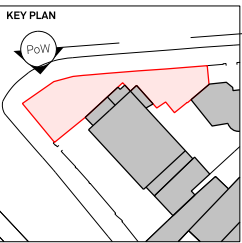
All existing site, tree and building information has been compiled from different sources.

All dimensions to be checked on site.

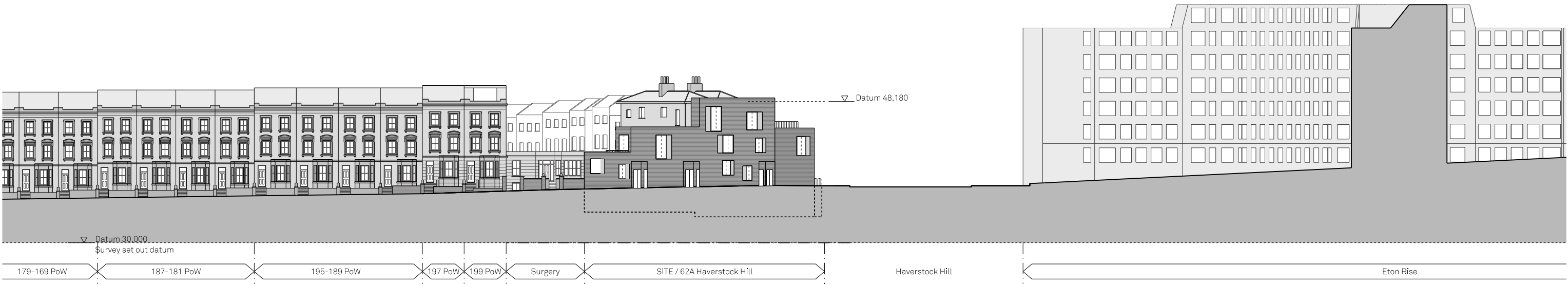


**CARMODY
GROARKE**

62-70 Shorts Gardens
London, WC2H 9AH
T + 44 (0) 20 7836 2333
www.carmodygroarke.com



Project		Haverstock Hill		Project No.	
				126	
Client		E Sharon Group (Management) Ltd.			
Date	February 2015	Drawn	MK	Issue	
Scale / Format	1:100@A3	Checked	LK	P8	
CAD Reference	P:\Projects\XXCAD\sheets	Approved	KC		
Drawing Name	Proposed elevation PoW	Drawing No.	126_P_42_01		



Revisions					
P8	Planning submission	MK	LK	LB Camden	19.02.2015
Rev.	Description	Drawn	Check	Issued to	Date Issued

Notes

© Carmody Groarke Ltd.

Do not scale from drawings.

Errors to be reported immediately to the Architect.

To be read in conjunction with all relevant Architects', Services and Structural Engineers' drawings.

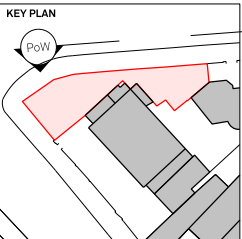
All existing site, tree and building information has been compiled from different sources.

All dimensions to be checked on site.



CARMODY
GROARKE

62-70 Shorts Gardens
London, WC2H 9AH
T + 44 (0) 20 7836 2333
www.carmodygroarke.com



Project		Haverstock Hill		Project No.	
				126	
Client		E Sharon Group (Management) Ltd.			
Date	February 2015	Drawn	MK	Issue	
Scale / Format	1:500@A3	Checked	LK	P8	
CAD Reference	P\Projects\XXCAD\sheets	Approved	KC		
Drawing Name	Proposed elevation PoW		Drawing No.	126_P_42_21	