

Revisions					
P4	Planning submission	MK	LK	LB Camden	19.02.2015
Rev.	Description	Drawn	Check	Issued to	Date Issued

**Notes**

© Carmody Groarke Ltd.

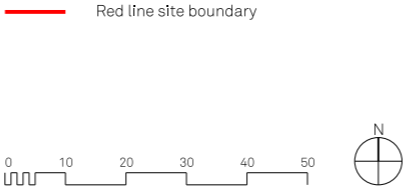
Do not scale from drawings.

Errors to be reported immediately to the Architect.

To be read in conjunction with all relevant Architects', Services and Structural Engineers' drawings.

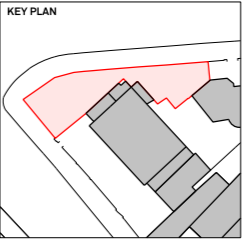
All existing site, tree and building information has been compiled from different sources.

All dimensions to be checked on site.

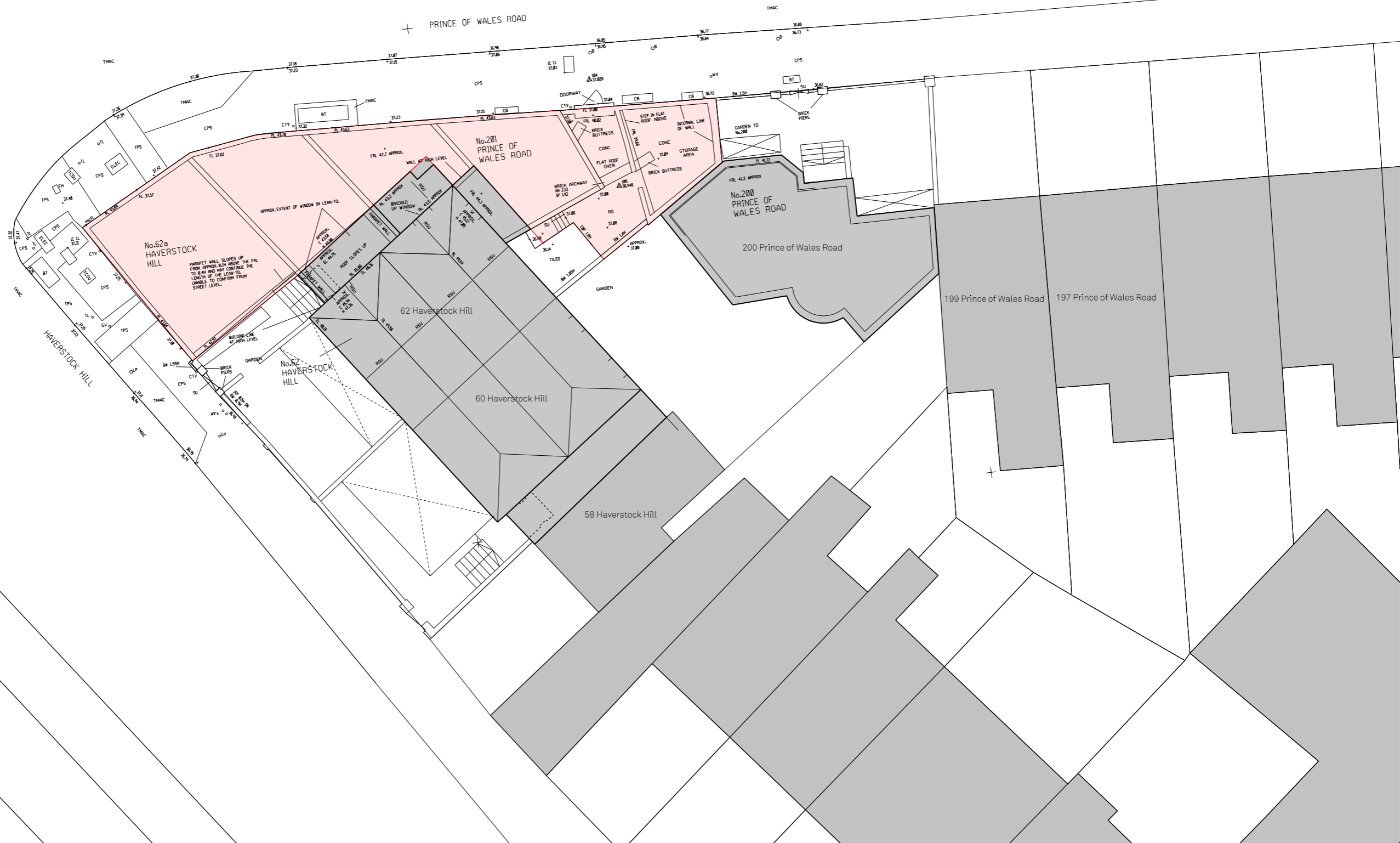


**CARMODY  
GROARKE**

62-70 Shorts Gardens  
London, WC2H 9AH  
T + 44 (0) 20 7836 2333  
www.carmodygroarke.com



Project		Haverstock Hill		Project No.	
				126	
Client		E Sharon Group (Management) Ltd.			
Date	February 2015	Drawn	MK	Issue	
Scale / Format	1:1250@A3	Checked	LK	P4	
CAD Reference	P:\Projects\XXCAD\sheets	Approved	KC		
Drawing Name	Existing Location plan	Drawing No.	126_X_10_01		

[illegible]

## Notes

© Carmody Groarke Ltd

Do not scale from drawings.

Errors to be reported immediately to the Architect.

To be read in conjunction with all relevant Architects', Services and Structural Engineers' drawings.

All existing site, tree and building information has been compiled from different sources.  
All dimensions to be checked on site.

— Red line site boundary

Record note: Survey source, Plowman Craven  
Drawing No. 25371RoL-R-01A

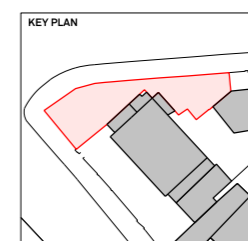


**CARMODY  
GROARKE**

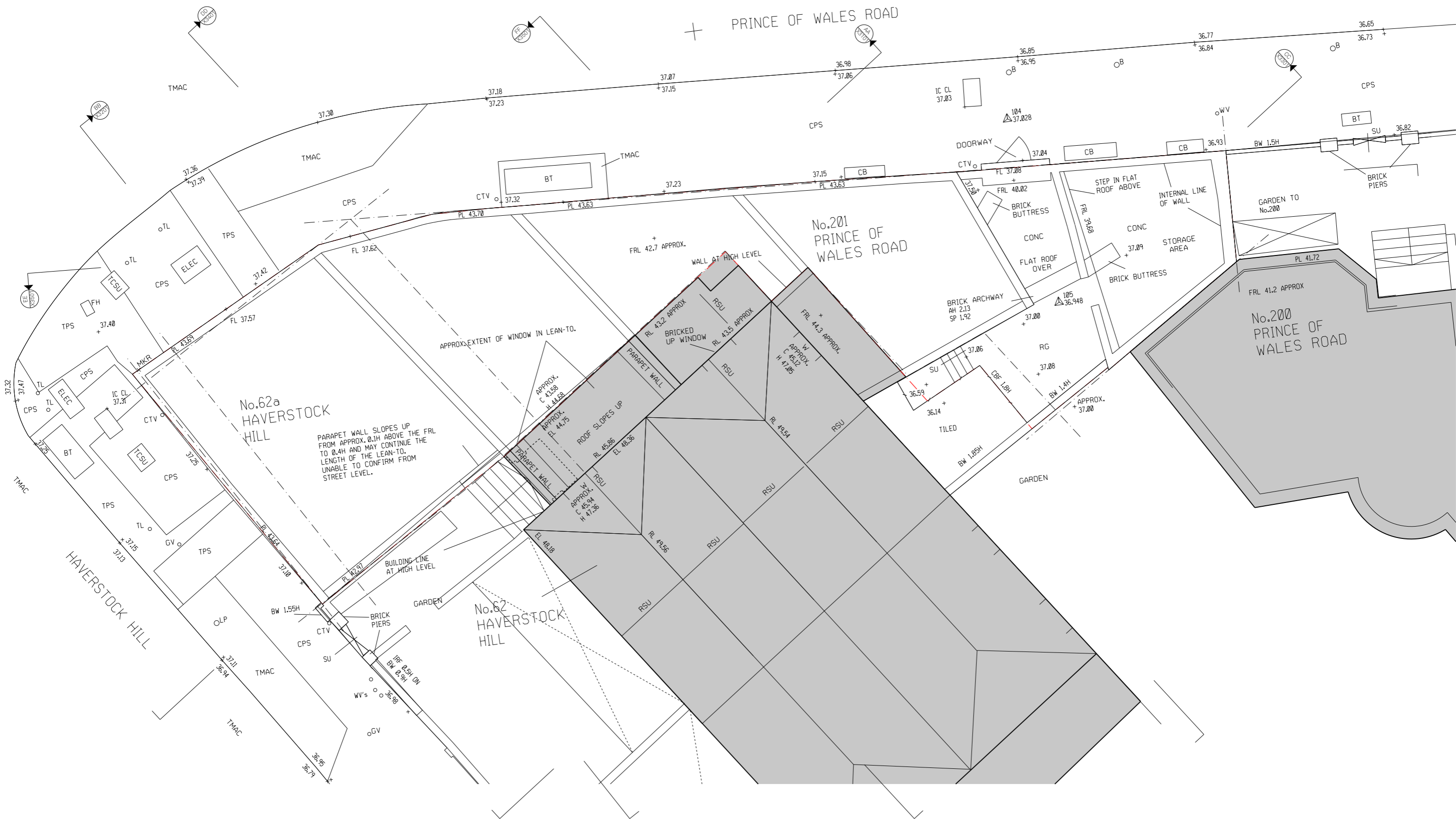
62-70 Shorts Gardens  
London, WC2H 9AH

T + 44 (0) 20 7836 2333

[www.carmodygroarke.com](http://www.carmodygroarke.com)



<b>Project</b>	Haverstock Hill		<b>Project No.</b>	<b>126</b>
<b>Client</b>	E Sharon Group (Management) Ltd.			
<b>Date</b>	February 2015	<b>Drawn</b>	MK	<b>Issue</b>
<b>Scale / Format</b>	1:200@A3	<b>Checked</b>	LK	<b>P4</b>
<b>CAD Reference</b>	P/Projects/XXCAD/sheets	<b>Approved</b>	KC	
<b>Drawing Name</b>	Existing site survey	<b>Drawing No.</b>	126_X_10_21	



Revisions					
P4	Planning submission	MK	LK	LB Camden	19.02.2015
<b>Rev.</b>	<b>Description</b>	<b>Drawn</b>	<b>Check</b>	<b>Issued to</b>	<b>Date Issued</b>

## Notes

---

© Carmody Groarke Ltd.

Do not scale from drawings.

Errors to be reported immediately to the Architect.

To be read in conjunction with all relevant Architects' Services and Structural Engineers' drawings.

All existing site, tree and building information has been compiled from different sources.

All dimensions to be checked on site.

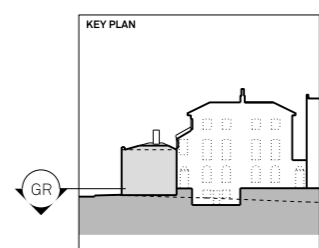
— · — Red line site boundary

Record note: Survey source, Plowman Crave  
Drawing No. 25371RoL-R-01A

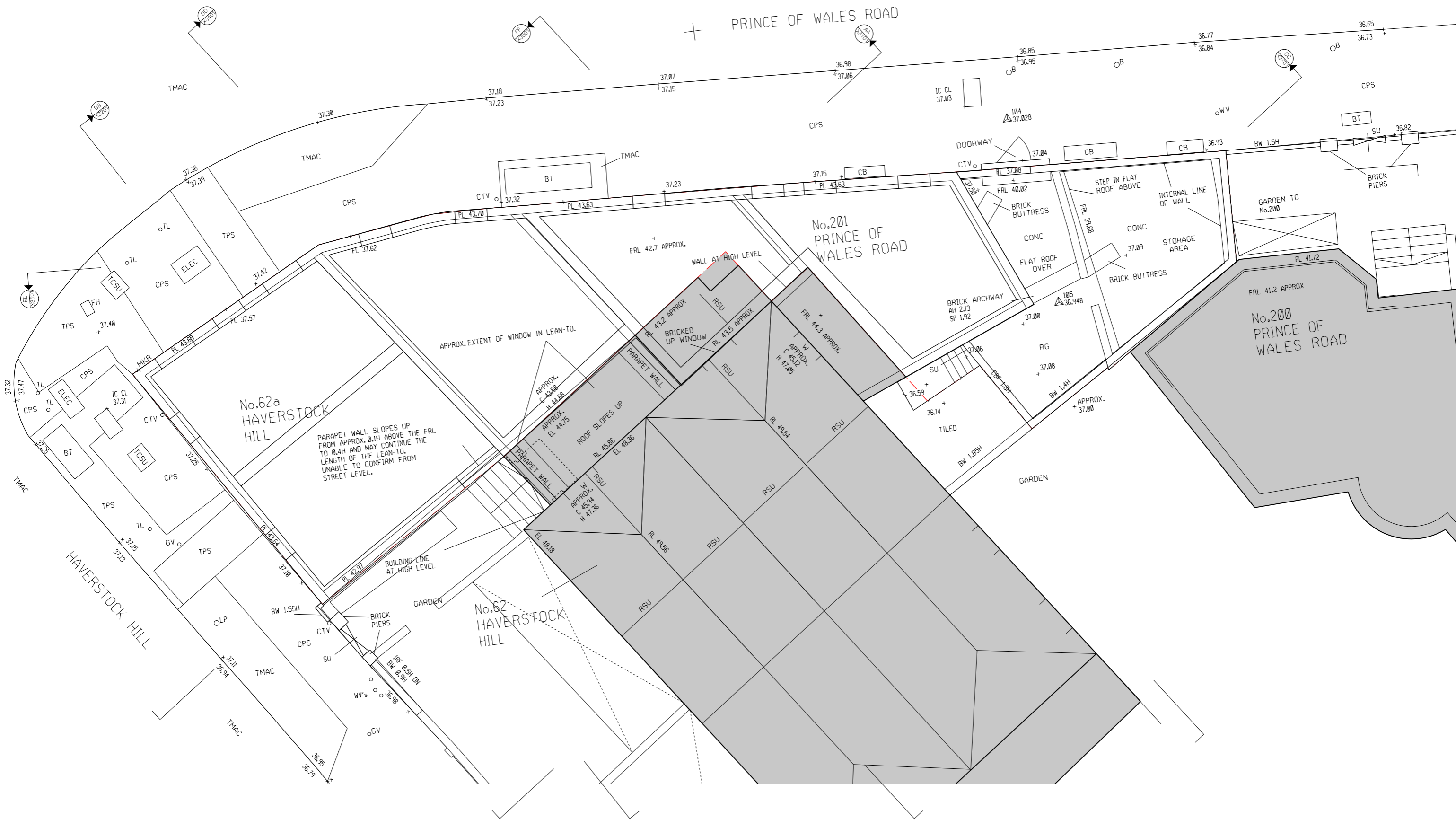


**CARMODY  
GROARKE**

62-70 Shorts Gardens  
London, WC2H 9AH  
T + 44 (0) 20 7836 2333  
[www.carmodygroarke.com](http://www.carmodygroarke.com)



Project	Haverstock Hill	Project No.	126
Client	E Sharon Group (Management) Ltd.		
Date	February 2015	Drawn	MK
Scale / Format	1:100@A3	Checked	LK
CAD Reference	P/Projects/XXCAD/sheets	Approved	KC
Drawing Name	Existing ground floor	Drawing No.	126_X_22-01



Revisions					
P4	Planning submission	MK	LK	LB Camden	19.02.2015
<b>Rev.</b>	<b>Description</b>	<b>Drawn</b>	<b>Check</b>	<b>Issued to</b>	<b>Date Issued</b>

## Notes

---

© Carmody Groarke Ltd.

Do not scale from drawings.

Errors to be reported immediately to the Architect.

To be read in conjunction with all relevant Architects' Services and Structural Engineers' drawings.

All existing site, tree and building information has been compiled from different sources.

All dimensions to be checked on site.

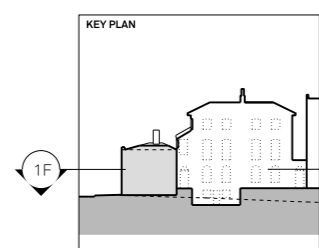
Red line site boundary

Record note: Survey source, Plowman Crave  
Drawing No. 25371RoL-R-01A

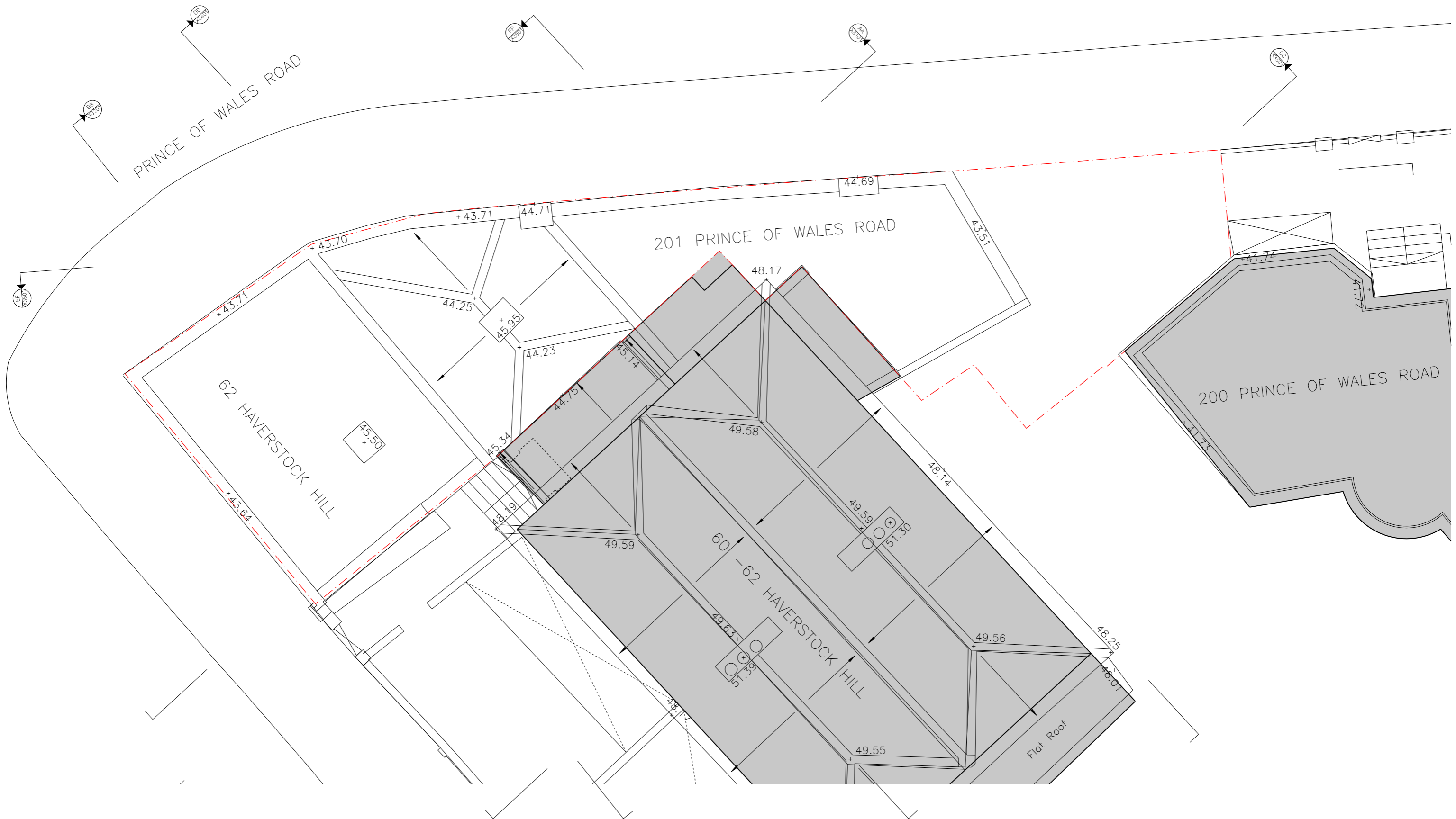


**CARMODY  
GROARKE**

62-70 Shorts Gardens  
London, WC2H 9AH  
T + 44 (0) 20 7836 2333  
[www.carmodygroarke.com](http://www.carmodygroarke.com)



Project	Haverstock Hill		Project No.
			126
Client	E Sharon Group (Management) Ltd.		
Date	February 2015	Drawn	MK
Scale / Format	1:100@A3	Checked	LK
CAD Reference	P/Projects/XXCAD/sheets	Approved	KC
Drawing Name	Existing first floor	Drawing No.	126_X_23_01



<b>Revisions</b>					
P2	Planning submission	MK	LK	LB Camden	19.02.2015
<b>Rev.</b>	<b>Description</b>	<b>Drawn</b>	<b>Check</b>	<b>Issued to</b>	<b>Date Issued</b>

**Notes**

---

© Carmody Groarke Ltd.

Do not scale from drawings.

Errors to be reported immediately to the Architect.

To be read in conjunction with all relevant Architects',  
Services and Structural Engineers' drawings.

All existing site, tree and building information has been compiled from  
different sources.

All dimensions to be checked on site.

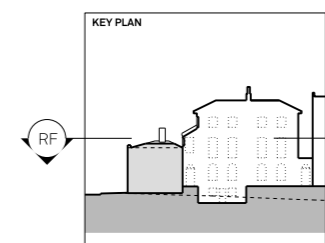
— · — Red line site boundary

Record note: Survey source, Plowman Craven  
Drawing No. 25371RoL-R-01A



**CARMODY  
GROARKE**

62-70 Shorts Gardens  
London, WC2H 9AH  
T + 44 (0) 20 7836 2333  
[www.carmodygroarke.com](http://www.carmodygroarke.com)



Project	Haverstock Hill		Project No.
			126
Client	E Sharon Group (Management) Ltd.		
Date	February 2015	Drawn	MK
Scale / Format	1:100@A3	Checked	LK
CAD Reference	P/Projects/XX/CAD/sheets	Approved	KC
Drawing Name	Existing roof plan	Drawing No.	126_X_24_01



Revisions					
P4	Planning submission	MK	LK	LB Camden	19.02.2015
Rev.	Description	Drawn	Check	Issued to	Date Issued

**Notes**

© Carmody Groarke Ltd.

Do not scale from drawings.

Errors to be reported immediately to the Architect.

To be read in conjunction with all relevant Architects', Services and Structural Engineers' drawings.

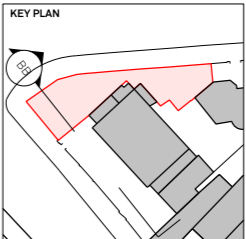
All existing site, tree and building information has been compiled from different sources.

All dimensions to be checked on site.

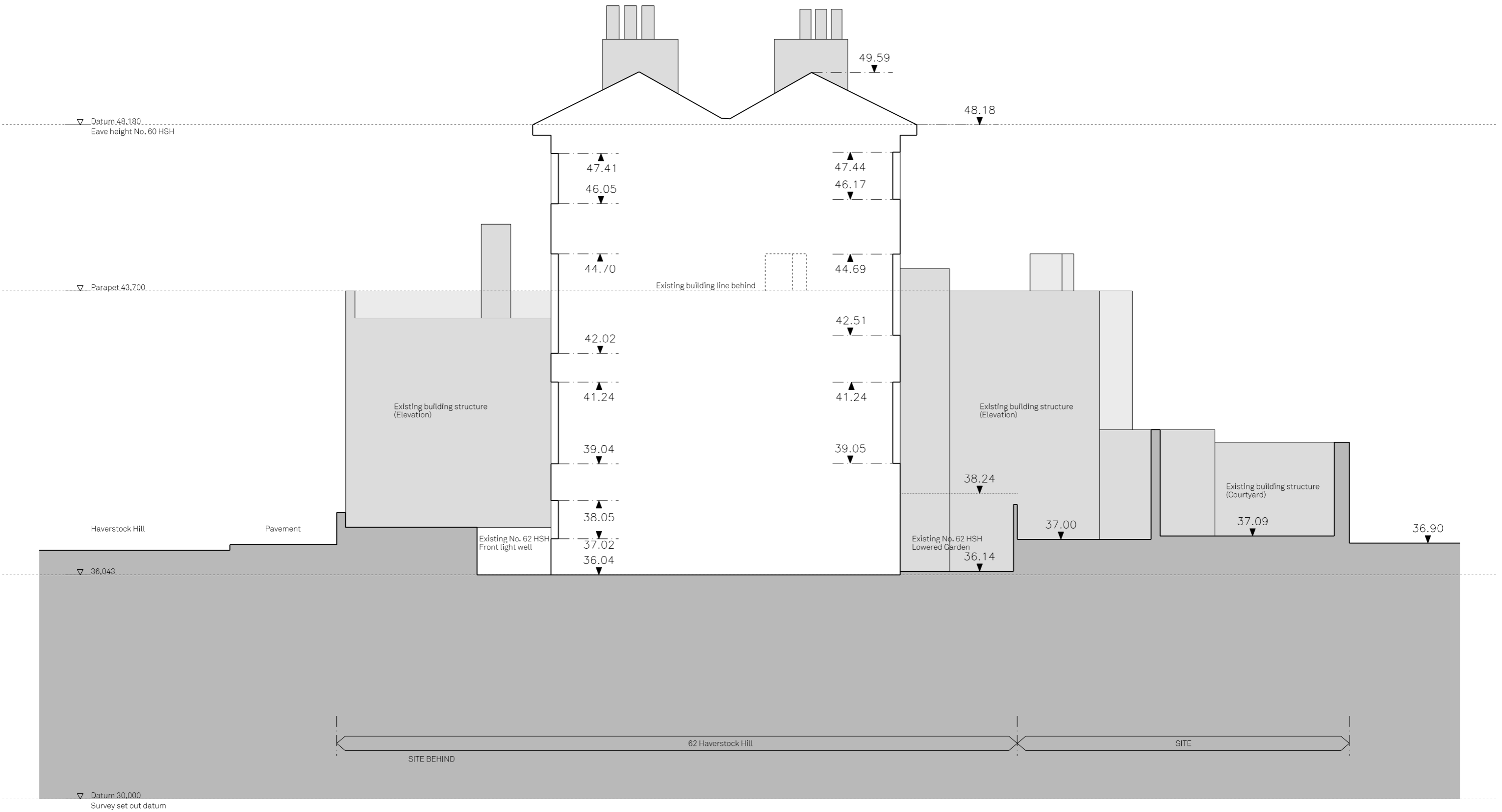


**CARMODY  
GROARKE**

62-70 Shorts Gardens  
London, WC2H 9AH  
T + 44 (0) 20 7836 2333  
www.carmodygroarke.com



Project		Haverstock Hill		Project No.	
				126	
Client		E Sharon Group (Management) Ltd.			
Date	February 2015	Drawn	MK	Issue	
Scale / Format	1:100@A3	Checked	LK	P4	
CAD Reference	P\Projects\XXCAD\sheets	Approved	KC		
Drawing Name	Existing section BB	Drawing No.	126_X_32_01		



Revisions					
P4	Planning submission	MK	LK	LB Camden	19.02.2015
Rev.	Description	Drawn	Check	Issued to	Date Issued

**Notes**

© Carmody Groarke Ltd.

Do not scale from drawings.

Errors to be reported immediately to the Architect.

To be read in conjunction with all relevant Architects', Services and Structural Engineers' drawings.

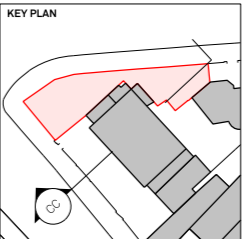
All existing site, tree and building information has been compiled from different sources.

All dimensions to be checked on site.

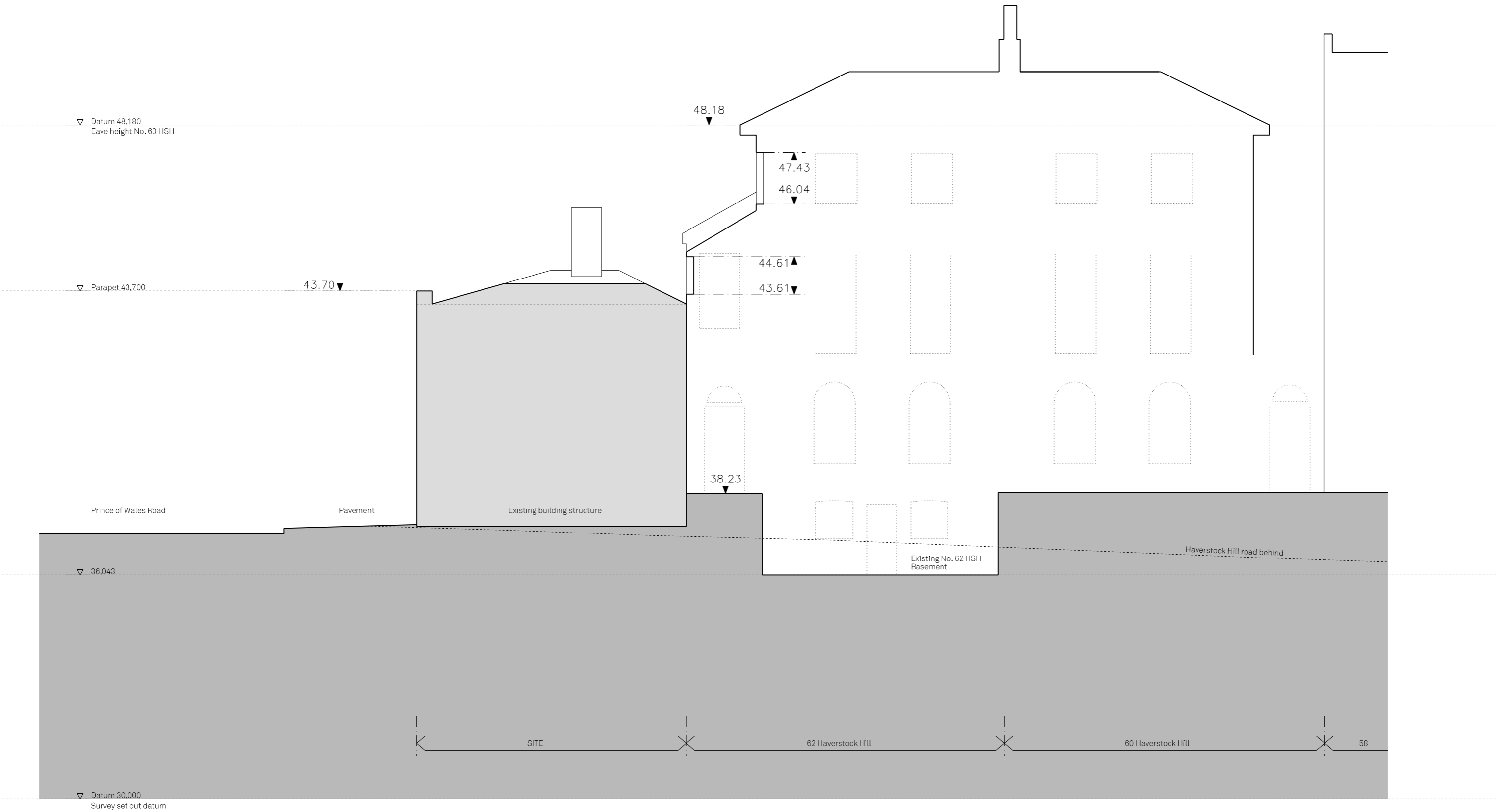


**CARMODY  
GROARKE**

62-70 Shorts Gardens  
London, WC2H 9AH  
T + 44 (0) 20 7836 2333  
www.carmodygroarke.com



Project		Haverstock Hill		Project No.	
				126	
<hr/>					
Client		E Sharon Group (Management) Ltd.			
<hr/>					
Date	February 2015	Drawn	MK	Issue	
Scale / Format	1:100@A3	Checked	LK	P4	
CAD Reference	P\Projects\XXCAD\sheets	Approved	KC		
<hr/>					
Drawing Name	Existing section CC	Drawing No.	126_X_33_01		



Revisions					
P4	Planning submission	MK	LK	LB Camden	19.02.2015
Rev.	Description	Drawn	Check	Issued to	Date Issued

**Notes**

© Carmody Groarke Ltd.

Do not scale from drawings.

Errors to be reported immediately to the Architect.

To be read in conjunction with all relevant Architects', Services and Structural Engineers' drawings.

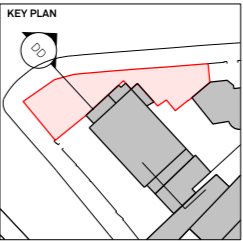
All existing site, tree and building information has been compiled from different sources.

All dimensions to be checked on site.

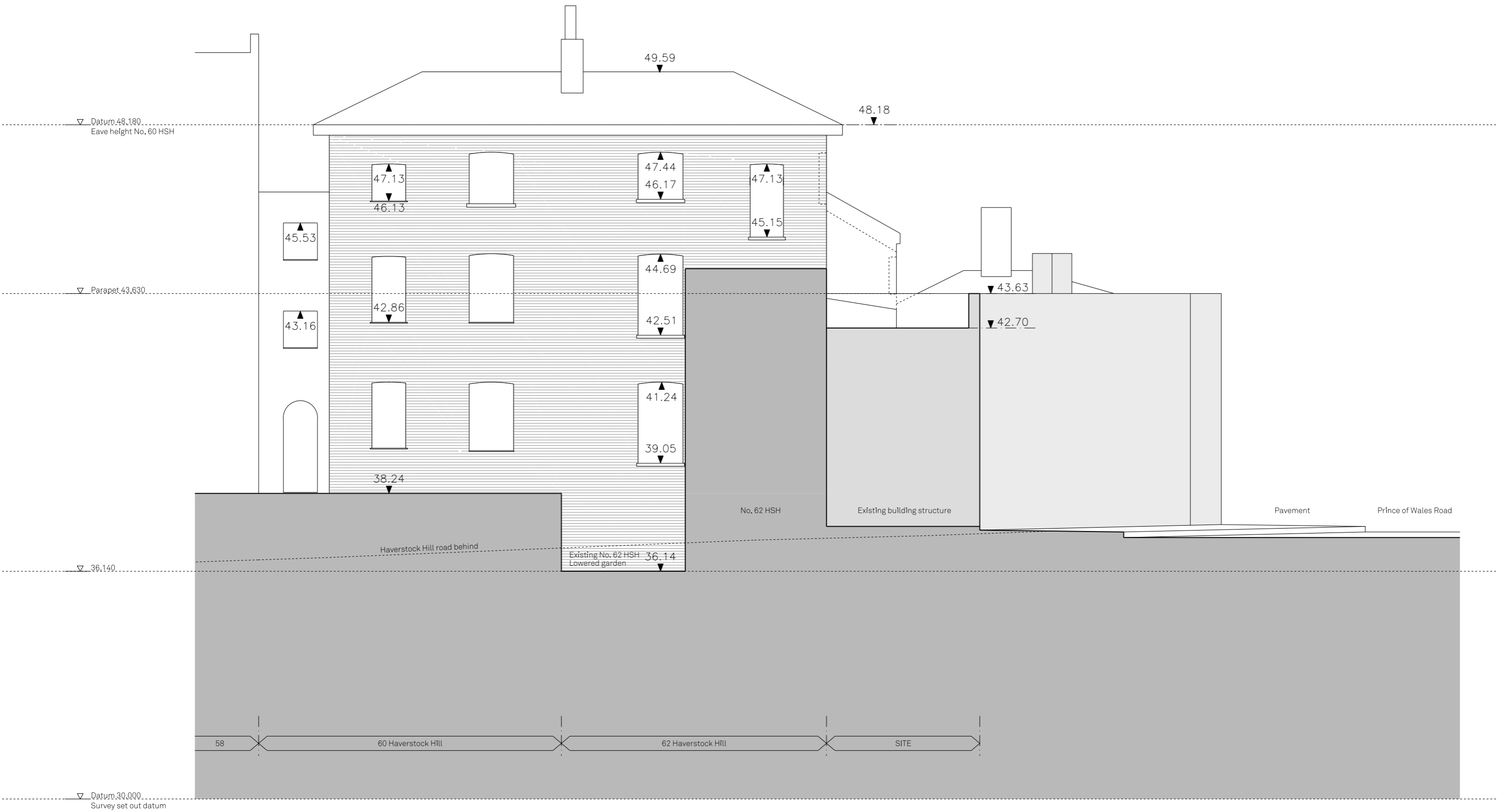


**CARMODY  
GROARKE**

62-70 Shorts Gardens  
London, WC2H 9AH  
T + 44 (0) 20 7836 2333  
www.carmodygroarke.com



Project		Haverstock Hill		Project No.	
				126	
Client		E Sharon Group (Management) Ltd.			
Date	February 2015	Drawn	MK	Issue	
Scale / Format	1:100@A3	Checked	LK	P4	
CAD Reference	P/Projects/XXCAD/sheets	Approved	KC		
Drawing Name	Existing section DD	Drawing No.	126_X_34_01		



Revisions					
P4	Planning submission	MK	LK	LB Camden	19.02.2015
Rev.	Description	Drawn	Check	Issued to	Date Issued

**Notes**

© Carmody Groarke Ltd.

Do not scale from drawings.

Errors to be reported immediately to the Architect.

To be read in conjunction with all relevant Architects', Services and Structural Engineers' drawings.

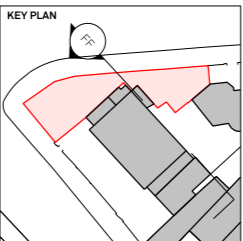
All existing site, tree and building information has been compiled from different sources.

All dimensions to be checked on site.



**CARMODY  
GROARKE**

62-70 Shorts Gardens  
London, WC2H 9AH  
T + 44 (0) 20 7836 2333  
www.carmodygroarke.com



Project		Haverstock Hill		Project No.	
				126	
Client		E Sharon Group (Management) Ltd.			
Date	February 2015	Drawn	MK	Issue	
Scale / Format	1:100@A3	Checked	LK	P4	
CAD Reference	P:\Projects\XXCAD\sheets	Approved	KC		
Drawing Name	Existing section FF	Drawing No.	126_X_36_01		



Revisions					
P4	Planning submission	MK	LK	LB Camden	19.02.2015
Rev.	Description	Drawn	Check	Issued to	Date Issued

**Notes**

© Carmody Groarke Ltd.

Do not scale from drawings.

Errors to be reported immediately to the Architect.

To be read in conjunction with all relevant Architects', Services and Structural Engineers' drawings.

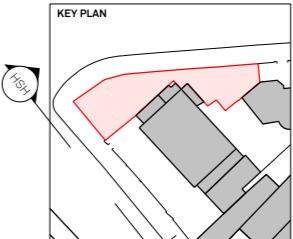
All existing site, tree and building information has been compiled from different sources.

All dimensions to be checked on site.

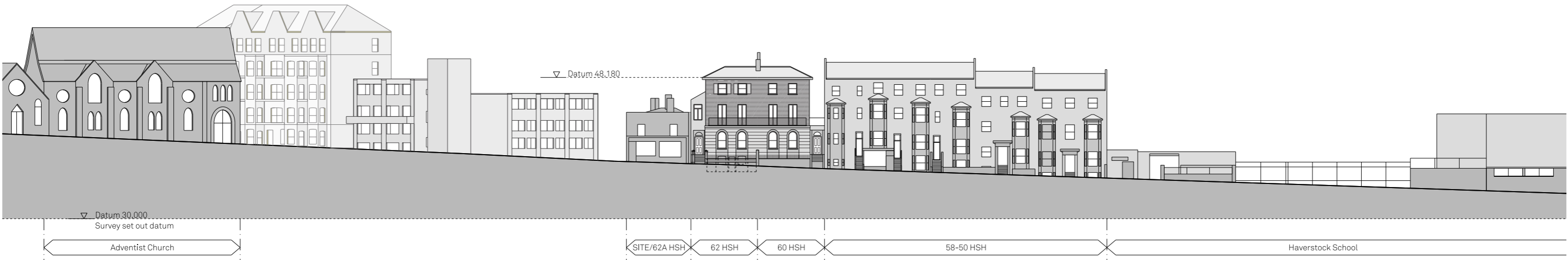


**CARMODY  
GROARKE**

62-70 Shorts Gardens  
London, WC2H 9AH  
T + 44 (0) 20 7836 2333  
www.carmodygroarke.com



Project		Haverstock Hill		Project No.	
				126	
Client		E Sharon Group (Management) Ltd.			
Date	February 2015	Drawn	MK	Issue	
Scale / Format	1:100@A3	Checked	LK	P4	
CAD Reference	P:\Projects\XXCAD\sheets	Approved	KC		
Drawing Name	Existing elevation HSH	Drawing No.	126_X_41_01		



Revisions					
P4	Planning submission	MK	LK	LB Camden	19.02.2015
Rev.	Description	Drawn	Check	Issued to	Date Issued

**Notes**

© Carmody Groarke Ltd.

Do not scale from drawings.

Errors to be reported immediately to the Architect.

To be read in conjunction with all relevant Architects', Services and Structural Engineers' drawings.

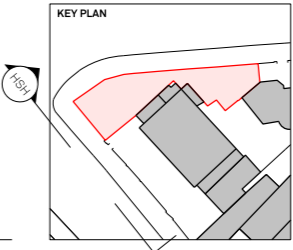
All existing site, tree and building information has been compiled from different sources.

All dimensions to be checked on site.



CARMODY  
GROARKE

62-70 Shorts Gardens  
London, WC2H 9AH  
T + 44 (0) 20 7836 2333  
www.carmodygroarke.com



Project		Haverstock Hill		Project No.	
				126	
Client		E Sharon Group (Management) Ltd.			
Date	February 2015	Drawn	MK	Issue	
Scale / Format	1:500@A3	Checked	LK	P4	
CAD Reference	P\Projects\XXCAD\sheets	Approved	KC		
Drawing Name	Existing elevation HSH	Drawing No.	126_X_41_21		



Revisions					
P4	Planning submission	MK	LK	LB Camden	19.02.2015
Rev.	Description	Drawn	Check	Issued to	Date Issued

**Notes**

© Carmody Groarke Ltd.

Do not scale from drawings.

Errors to be reported immediately to the Architect.

To be read in conjunction with all relevant Architects', Services and Structural Engineers' drawings.

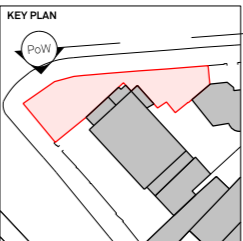
All existing site, tree and building information has been compiled from different sources.

All dimensions to be checked on site.

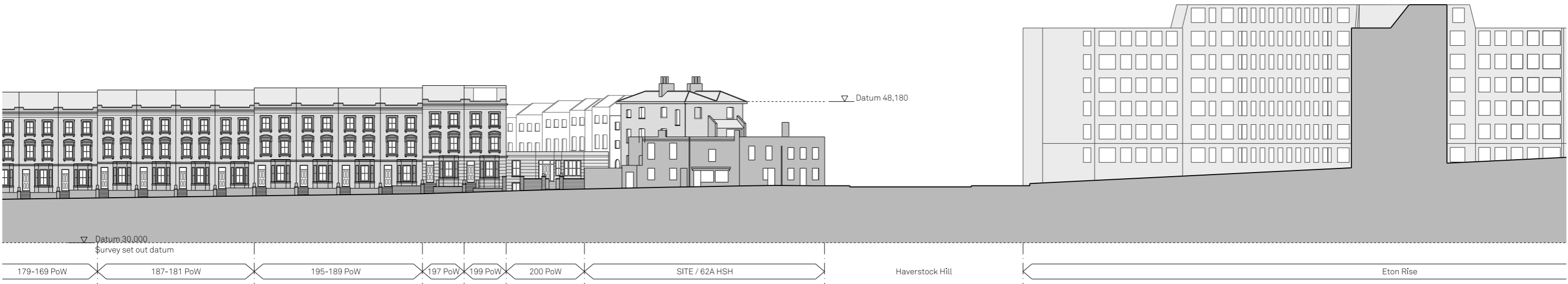


**CARMODY  
GROARKE**

62-70 Shorts Gardens  
London, WC2H 9AH  
T + 44 (0) 20 7836 2333  
www.carmodygroarke.com



Project		Haverstock Hill		Project No.	
				126	
Client		E Sharon Group (Management) Ltd.			
Date	February 2015	Drawn	MK	Issue	
Scale / Format	1:100@A3	Checked	LK	P4	
CAD Reference	P/Projects/XXCAD/sheets	Approved	KC		
Drawing Name	Existing elevation PoW	Drawing No.	126_X_42_01		



Revisions					
P4	Planning submission	MK	LK	LB Camden	19.02.2015
Rev.	Description	Drawn	Check	Issued to	Date Issued

**Notes**

© Carmody Groarke Ltd.

Do not scale from drawings.

Errors to be reported immediately to the Architect.

To be read in conjunction with all relevant Architects', Services and Structural Engineers' drawings.

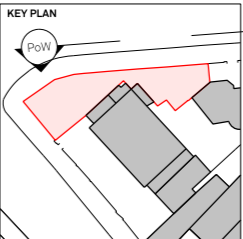
All existing site, tree and building information has been compiled from different sources.

All dimensions to be checked on site.



**CARMODY  
GROARKE**

62-70 Shorts Gardens  
London, WC2H 9AH  
T + 44 (0) 20 7836 2333  
www.carmodygroarke.com



Project		Haverstock Hill		Project No.	
				126	
Client		E Sharon Group (Management) Ltd.			
Date	February 2015	Drawn	MK	Issue	
Scale / Format	1:500@A3	Checked	LK	P4	
CAD Reference	P:\Projects\XX\CAD\sheets	Approved	KC		
Drawing Name	Existing elevation PoW	Drawing No.	126_X_42_21		