

# Improving and protecting our environment and quality of life

## DP24. Securing high quality design

- 24.1 Core Strategy policy CS14 – *Promoting high quality places and conserving our heritage* sets out the Council’s overall strategy on promoting high quality places, seeking to ensure that Camden’s places and buildings are attractive, safe, healthy and easy to use and requiring development to be of the highest standard of design that respects local context and character. Camden has a unique and rich built and natural heritage, with many areas with their own distinct character, created by a variety of elements including building style and layout, history, natural environment including open spaces and gardens, and mix of uses. We have a duty to respect these areas and buildings and, where possible, enhance them when constructing new buildings and in alterations and extensions.
- 24.2 Policy DP24 contributes to implementing the Core Strategy by setting out our detailed approach to the design of new developments and alterations and extensions. These principles will ensure that all parts of Camden’s environment are designed to the highest possible standards and contribute to providing a healthy, safe and attractive environment.
- 24.3 The Core Strategy also sets out our approach to other matters related to design, such as tackling climate change through promoting higher standards (CS13), the importance of community safety and security (CS17) and protecting amenity from new development (CS5). Further guidance on design is contained in our Camden Planning Guidance supplementary document.

### DP POLICY

#### DP24 – Securing high quality design

The Council will require all developments, including alterations and extensions to existing buildings, to be of the highest standard of design and will expect developments to consider:

- |   |  |
|---|--|
| <ul style="list-style-type: none"> <li>a) character, setting, context and the form and scale of neighbouring buildings;</li> <li>b) the character and proportions of the existing building, where alterations and extensions are proposed;</li> <li>c) the quality of materials to be used;</li> <li>d) the provision of visually interesting frontages at street level;</li> </ul> | <ul style="list-style-type: none"> <li>e) the appropriate location for building services equipment;</li> <li>f) existing natural features, such as topography and trees;</li> <li>g) the provision of appropriate hard and soft landscaping including boundary treatments;</li> <li>h) the provision of appropriate amenity space; and</li> <li>i) accessibility.</li> </ul> |
|---|--|



## Promoting good design

- 24.4 The Council is committed to design excellence and a key strategic objective of the borough is to promote high quality, sustainable design. This is not just about the aesthetic appearance of the environment, but also about enabling an improved quality of life, equality of opportunity and economic growth. We will therefore apply policy DP24 to ensure that all developments throughout the borough, including alterations and extensions to existing buildings, are of the highest standard of design. In accordance with government guidance in Planning Policy Statement (PPS) 1 – *Delivering Sustainable Development* we will not accept design that is inappropriate to its context or which fails to take opportunities to improve the character and quality of an area and the way that it is used by residents and visitors.
- 24.5 Camden is a densely built-up borough where most development involves the replacement, extension or conversion of existing buildings. Design should respond creatively to its site and its context. This concerns both smaller-scale alterations and extensions and larger developments, the design and layout of which should take into account the pattern and size of blocks, open spaces, gardens and streets in the surrounding area (the ‘urban grain’).
- 24.6 The Council seeks to encourage outstanding architecture and design, both in contemporary and more traditional styles. Innovative design can greatly enhance the built environment and, unless a scheme is within an area of homogenous architectural style that is important to retain, high quality contemporary design will be welcomed. When assessing design, we will take into account government/CABE guidance *By Design – Urban Design in the planning system: towards better practice* and our own Camden Planning Guidance supplementary document.
- 24.7 Development should consider:
- the character and constraints of its site;
  - the prevailing pattern, density and scale of surrounding development;
  - the impact on existing rhythms, symmetries and uniformities in the townscape;
  - the compatibility of materials, their quality, texture, tone and colour;
  - the composition of elevations;
  - the suitability of the proposed design to its intended use;
  - its contribution to public realm, and its impact on views and vistas; and
  - the wider historic environment and buildings, spaces and features of local historic value.
- 24.8 Buildings should be designed to be as sustainable as possible. Environmental design and construction measures are set out in Policy DP22 – *Promoting sustainable design and construction*. Sustainable development also embraces principles of social sustainability which can be addressed by new development which:
- provides comfortable, safe, healthy and accessible space for its users;
  - is fit for purpose and can accommodate future flexibility of use;
  - provides a mix of uses and types of accommodation and provides for a range of needs within the community; and
  - provides sufficient amenity space for the promotion of health and wellbeing.



- 24.9 The re-use of existing buildings preserves the ‘embodied’ energy expended in their original construction, minimises construction waste and reduces the use of new materials. Many historic buildings display qualities that are environmentally sustainable and have directly contributed to their survival, for example the use of durable, natural, locally sourced materials, ‘soft’ construction methods, good room proportions, natural light and ventilation and ease of alteration. The retention and adaptation of existing buildings will be encouraged.
- 24.10 Due to the dense nature of Camden with extensive range and coverage of heritage assets, such as conservation areas, numerous listed buildings and five strategic views and two background views crossing the borough, the Council does not consider that it is practical to identify broad areas either suitable, or not suitable, for tall buildings. In the borough, a site may be suitable for a tall building while adjacent sites are not, due to impact on either views, conservations areas or listed buildings. Indeed, in some cases, suitability for a tall building differs across a single site. Given Camden’s strategic environmental characteristics, the entire borough is considered as being within the ‘sensitive’ category, as defined by the English Heritage/CABE Guidance on Tall Buildings (2007). Tall building proposals in Camden will therefore merit detailed design assessments. As part of the revision of the Camden Planning Guidance SPD further clarity will be provided on tall buildings and design issues in Camden.

## Respecting local character

- 24.11 Given the highly built-up nature of Camden, careful consideration of the characteristics of a site, features of local distinctiveness, and the wider context is needed in order to achieve high quality development which integrates into its surroundings.
- 24.12 In order to best preserve and enhance the positive elements of local character within the borough, we need to recognise and understand the factors that create it. Designs for new buildings, and alterations and extensions, should respect the character and appearance of the local area and neighbouring buildings. Within areas of distinctive character, development should reinforce those elements which create the character. Where townscape is particularly uniform attention should be paid to responding closely to the prevailing scale, form and proportions and materials. In areas of low quality or where no pattern prevails, development should improve the quality of an area and give a stronger identity.
- 24.13 Development should not undermine any existing uniformity of a street or ignore patterns or groupings of buildings. Overly large extensions can disfigure a building and upset its proportions. Extensions should therefore be subordinate to the original building in terms of scale and situation unless, exceptionally, it is demonstrated that this is not appropriate given the specific circumstances of the building. Past alterations or extensions to surrounding properties should not necessarily be regarded as a precedent for subsequent proposals for alterations and extensions.
- 24.13 Design and Access statements should include an assessment of local context and character, and set out how the development has been informed by, and responds to it. We have prepared a series of Conservation Area Statements, Appraisals and Management Plans which describe the character and appearance of individual conservation areas and set out how the Council considers each can be conserved and enhanced. These should be used by developers to inform their understanding of the special character of the area, and we will take these into account when assessing development proposals in conservation areas. Development Policy DP25 – *Conserving Camden’s heritage* provides further guidance on the preservation and enhancement of the historic environment.

## Detailing and materials

- 24.15 Architectural detailing should be carefully integrated into a building. In new development, detailing should be carefully considered so that it conveys quality of design and creates an attractive and interesting building. Architectural features on existing buildings, such as cornices, mouldings, architraves, porches and chimneys should be retained wherever possible, as their loss can harm a building by eroding its detailing. The insensitive replacement of windows and doors and the cladding and painting of masonry can also spoil the appearance of buildings and can be particularly damaging if the building forms part of a uniform group.
- 24.16 Schemes should incorporate materials of an appropriately high quality. The durability and visual attractiveness of materials will be carefully considered along with their texture, colour and compatibility with existing materials. Alterations and extensions should be carried out in materials that match the original or neighbouring buildings, or, where appropriate, in materials that complement or enhance a building or area.

## Contributing to the street frontage

- 24.17 Buildings should be visually interesting at street level, with entrances and windows used to create active frontages, which allow overlooking of public areas, provide a sense of vitality and contribute to making Camden a safer place (see Core Strategy policy CS17). Ground floors should be occupied by active uses and should not turn their back on streets and other public spaces.

## Incorporating building services equipment

- 24.18 Building services equipment, such as air cooling, heating, ventilation and extraction systems, lift and mechanical equipment, as well as fire escapes, ancillary plant and ducting should be contained within the envelope of a building or be located in a visually inconspicuous position.

## Responding to natural features

- 24.19 New developments should respond to the natural assets of a site and its surroundings, such as slopes and height differences, trees and other vegetation. Extensions and new developments should not cause the loss of any existing natural habitats, including private gardens. Core Strategy policy CS15 – *Protecting and improving our parks and open spaces and encouraging biodiversity* provides further guidance on nature conservation in Camden and the Council's strategy for trees.
- 24.20 Development within rear gardens and other undeveloped areas can often have a significant impact upon the amenity and character of an area. Gardens help shape their local area, provide a setting for buildings and can be important visually. Therefore they can be an important element in the character and identity of an area (its 'sense of place'). We will resist development that occupies an excessive part of a garden, and where there is a loss of garden space which contributes to the character of the townscape.
- 24.21 Development will not be permitted which fails to preserve or is likely to damage trees on a site which make a significant contribution to the character and amenity of an area. Where appropriate the Council will seek to ensure that developments make adequate provision for the planting and growth to maturity of large trees.





## Incorporating Landscaping

24.22 As with buildings, consideration of context is essential in the design of new hard and soft landscaping. Hard landscape elements (surfaces, boundary treatments etc), and the materials from which they are made, play a significant role in defining the character and attractiveness of a site or area and reinforcing local distinctiveness. New planting can contribute to the attractiveness of a development, soften and balance the impact of buildings and contribute to the biodiversity value of a site. Effective maintenance is often essential to the success of soft landscaping (shrubs, grass etc) and, where appropriate, the Council will expect planting plans to be accompanied by a maintenance schedule. New hard and soft landscaping should be of high quality and should positively respond to its local character.

## Providing amenity space

24.23 Private outdoor amenity space can add significantly to resident's quality of life and applicants are therefore encouraged to explore all options for the provision of new private outdoor space. Gardens, balconies and roof terraces are greatly valued and can be especially important for families. However, the densely built up nature of the borough means that the provision of private amenity space can be challenging, and the Council will require that the residential amenity of neighbours be preserved, in accordance with policy DP26 – *Managing the impact of development on occupiers and neighbours* and Core Strategy policy CS5 – *Managing the impact of growth and development*.

## Accessibility

24.24 In line with policy DP29 – *Improving access* the Council will expect all buildings and places to meet the highest practicable standards of access and inclusion. Any adaptation of existing buildings must therefore address this issue and respond to access needs whilst ensuring that alterations are sympathetic to the building's character and appearance. Policy DP25 – *Conserving Camden's heritage* provides further guidance on providing access to listed buildings.

### Key evidence and references

- By Design: Urban Design in the Planning System – Towards Better Practice; DETR/CABE; 2000
- Planning Policy Statement (PPS) 1 – Delivering Sustainable Development, 2005
- Planning Policy Statement (PPS) 12 – Local Spatial Planning, 2008
- Making design policy work, CABE; 2005
- The London Plan (consolidated with alterations since 2004); Mayor of London; 2008
- Building in Context, CABE/English Heritage, 2002
- Tree and Woodland Framework for London, Mayor of London, 2005

## DP25. Conserving Camden’s heritage

- 25.1 Camden has inherited a rich architectural heritage with many special places and buildings from many different eras in the area’s history, from the historic villages of Hampstead and Highgate to Georgian squares and John Nash’s Regent’s Park terraces, from the Victorian engineering of St Pancras Station to iconic modern structures such as Centrepoint. These places and buildings add to the quality of our lives by giving a sense of local distinctiveness, identity and history. 39 areas, covering much of the borough, are designated as conservation areas, recognising their special architectural or historic interest and their character and appearance. Also, thousands of buildings in Camden are nationally listed for their special historical or architectural interest (see map 3). We have a responsibility to preserve and, where possible, enhance these areas and buildings. This policy helps to implement Core Strategy policy CS14 – *Promoting high quality places and conserving our heritage*.

### DP POLICY

## DP25 – Conserving Camden’s heritage

### Conservation areas

In order to maintain the character of Camden’s conservation areas, the Council will:

- a) take account of conservation area statements, appraisals and management plans when assessing applications within conservation areas;
- b) only permit development within conservation areas that preserves and enhances the character and appearance of the area;
- c) prevent the total or substantial demolition of an unlisted building that makes a positive contribution to the character or appearance of a conservation area where this harms the character or appearance of the conservation area, unless exceptional circumstances are shown that outweigh the case for retention;
- d) not permit development outside of a conservation area that causes harm to the character and appearance of that conservation area; and
- e) preserve trees and garden spaces which contribute to the character of a conservation area and which provide a setting for Camden’s architectural heritage.

### Listed buildings

To preserve or enhance the borough’s listed buildings, the Council will:

- e) prevent the total or substantial demolition of a listed building unless exceptional circumstances are shown that outweigh the case for retention;
- f) only grant consent for a change of use or alterations and extensions to a listed building where it considers this would not cause harm to the special interest of the building; and
- g) not permit development that it considers would cause harm to the setting of a listed building.

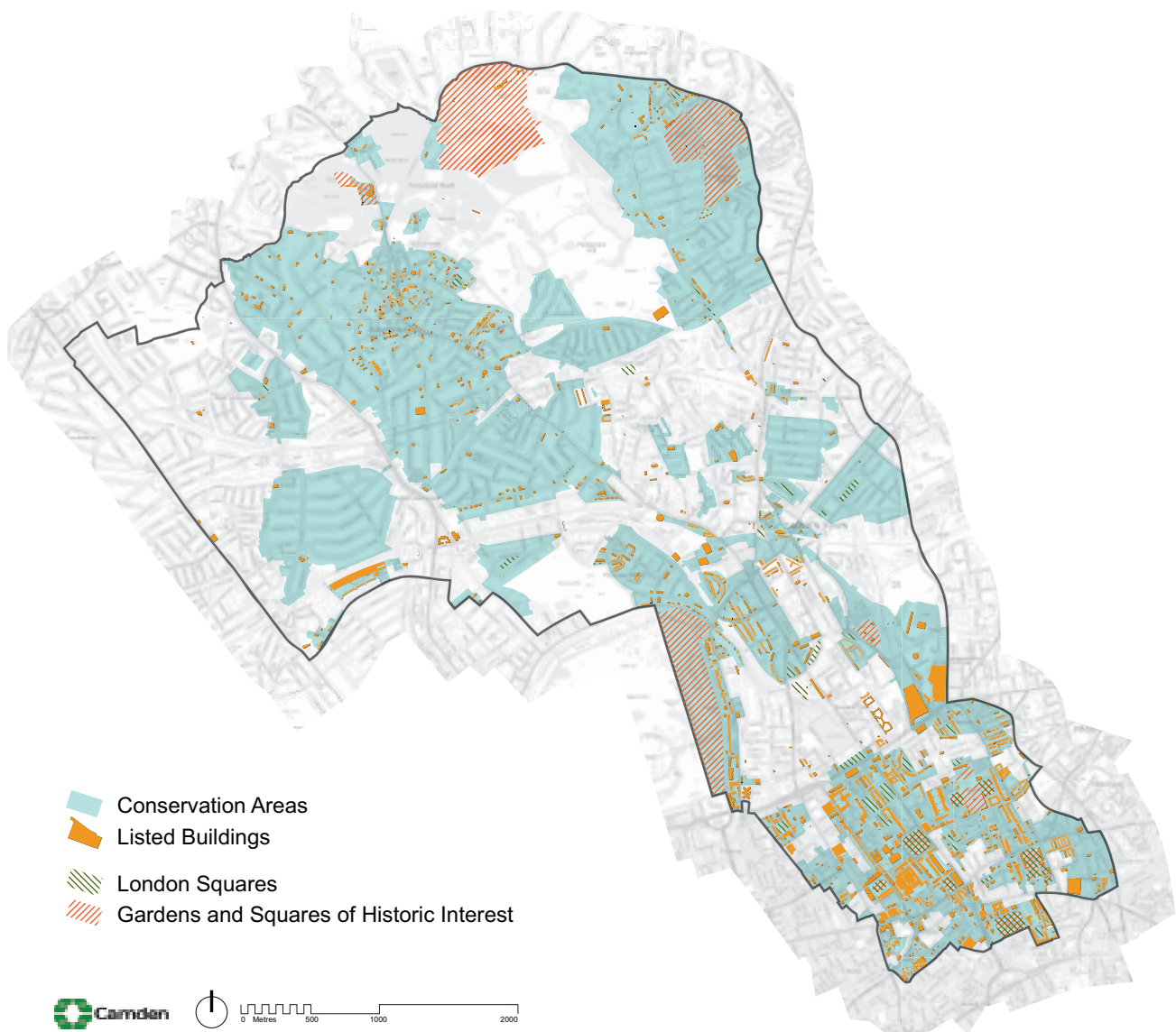
### Archaeology

The Council will protect remains of archaeological importance by ensuring acceptable measures are taken to preserve them and their setting, including physical preservation, where appropriate.

### Other heritage assets

The Council will seek to protect other heritage assets including Parks and Gardens of Special Historic Interest and London Squares.

## Map 3: Heritage



This map is based on Ordnance Survey Material with the permission of Ordnance Survey on behalf of the Controller of Her Majesty's Stationery Office ©. Unauthorised reproduction infringes Crown copyright and may lead to prosecution or civil proceedings. Licence number LA100019726, year 2010.

## Conservation Areas

- 25.2 In order to preserve and enhance important elements of local character, we need to recognise and understand the factors that create this character. The Council has prepared a series of conservation area statements, appraisals and management plans that assess and analyse the character and appearance of each of our conservation areas and set out how we consider they can be preserved and enhanced. We will take these into account when assessing planning applications for development in conservation areas. We will seek to manage change in a way that retains the distinctive characters of our conservation areas and will expect new development to contribute positively to this. The Council will therefore only grant planning permission for development in Camden's conservation areas that preserves and enhances the special character or appearance of the area. The character of conservation areas derive from the combination of a number of factors, including scale, density, pattern of development, landscape, topography, open space, materials, architectural detailing, and uses. These elements should be identified and responded to in the design of new development. Design and Access Statements should include an assessment of local context and character, and set out how the development has been informed by it and responds to it.

- 25.3 The character and appearance of a conservation area can be eroded through the loss of traditional architectural details such as historic windows and doors, characteristic rooftops, garden settings and boundary treatments. Where alterations are proposed they should be undertaken in a material of a similar appearance to the existing. Traditional features should be retained or reinstated where they have been lost, using examples on neighbouring houses and streets to inform the restoration. The Council will consider the introduction of Article 4 Directions to remove permitted development rights for the removal or alterations of traditional details where the character and appearance of a conservation area is considered to be under threat.
- 25.4 Historic buildings in conservation areas can be sensitively adapted to meet the needs of climate change and energy saving – preserving their special interest and ensuring their long term survival. For detailed advice on energy saving in historic buildings and conservation areas visit the English Heritage website and our Camden Planning Guidance supplementary document. Changes in patterns of use can also erode the character of an area. It is therefore important that, whenever possible, uses which contribute to the character of a conservation area are not displaced by redevelopment.
- 25.5 The value of existing gardens, trees and landscaping to the character of the borough is described in DP24 – Securing High Quality Design, and they make a particular contribution to conservation areas. Development will not be permitted which causes the loss of trees and/or garden space where this is important to the character and appearance of a conservation area. DP27 – Basements and lightwells provides further guidance on this issue where landscaping may be affected by basements and other underground structures.
- 25.6 The Council has a general presumption in favour of retaining buildings that make a positive contribution to the character or appearance of a conservation area, whether they are listed or not so as to preserve the character and appearance of the conservation area. We will not grant conservation area consent for the total or substantial demolition of such a building where this would harm the appearance of the conservation area, unless exceptional circumstances are shown that outweigh the case for retention. Applicants will be required to justify the demolition of a building that makes a positive contribution to a conservation area, having regard to Policy HE7 of Planning Policy Statement (PPS) 5: Planning for the Historic Environment, Camden’s conservation area statements, appraisals and management plans and any other relevant supplementary guidance produced by the Council.





- 25.7 When considering applications for demolition, the Council will take account of group value, context and setting of buildings, as well as their quality as individual structures and any contribution to the setting of listed buildings. Applications must clearly show which buildings or parts of buildings are to be demolished.
- 25.8 Applications for total or substantial demolition in conservation areas must demonstrate to the Council's satisfaction that effective measures will be taken during demolition and building works to ensure structural stability of retained parts and adjoining structures. Before conservation area consent for demolition is granted, the Council must be satisfied that there are acceptable detailed plans for the redevelopment. Any replacement building should enhance the conservation area to an appreciably greater extent than the existing building. When a building makes little or no contribution to the character and appearance of a conservation area, any replacement building should enhance the conservation area to an appreciably greater extent than the existing building.
- 25.9 Due to the largely dense urban nature of Camden, the character or appearance of our conservation areas can also be affected by development which is outside of conservation areas, but visible from within them. This includes high or bulky buildings, which can have an impact on areas some distance away, as well as adjacent premises. The Council will therefore not permit development in locations outside conservation areas that it considers would cause harm to the character, appearance or setting of such an area.
- 25.10 Our Camden Planning Guidance supplementary document provides further information on our approach to conservation areas.

## Listed buildings

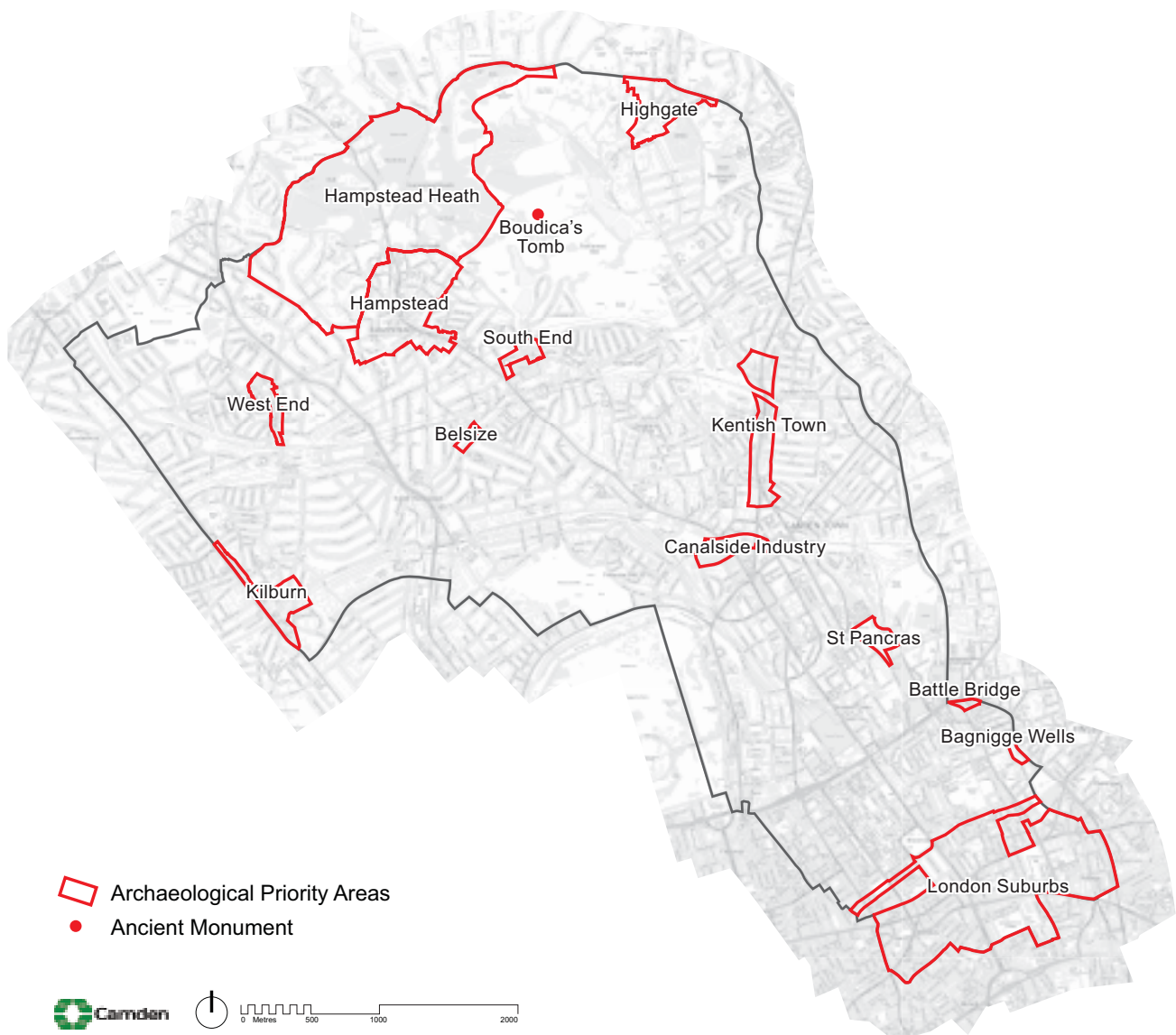
- 25.11 Camden's listed buildings and structures provide a rich and unique historic and architectural legacy. They make an important and valued contribution to the appearance of the borough and provide places to live and work in, well known visitor attractions, and cherished local landmarks. We have a duty to preserve and maintain these for present and future generations. There are over 5,600 buildings and structures in Camden that are on the statutory list for their special architectural or historic interest.
- 25.12 The Council has a general presumption in favour of the preservation of listed buildings. Total demolition, substantial demolition and rebuilding behind the façade of a listed building will not normally be considered acceptable. The matters which will be taken into consideration in an application for the total or substantial demolition of a listed building are those set out in Policy HE7 of PPS5.





- 25.13 In order to protect listed buildings, the Council will control external and internal works that affect their special architectural or historic interest. Consent is required for any alterations, including some repairs, which would affect the special interest of a listed building. The matters which will be taken into consideration in an application for alterations and extensions to a listed building are those set out in Policy HE7 of PPS5.
- 25.14 Where listed buildings are being altered for the provision of access for people with disabilities, the Council will balance their needs with the interests of conservation and preservation. We will expect design approaches to be fully informed by an audit of conservation constraints and access needs, and to have considered all available options. The listed nature of a building does not preclude the development of inclusive design solutions, and the Council expects sensitivity and creativity to be employed in achieving solutions that meet the needs of accessibility and conservation.
- 25.15 The setting of a listed building is of great importance and should not be harmed by unsympathetic neighbouring development. While the setting of a listed building may be limited to its immediate surroundings, it often can extend some distance from it. The value of a listed building can be greatly diminished if unsympathetic development elsewhere harms its appearance or its harmonious relationship with its surroundings. Applicants will be expected to provide sufficient information about the proposed development and its relationship with its immediate setting, in the form of a design statement.
- 25.16 Proposals that reduce the energy consumption of listed buildings will be welcomed provided that they do not cause harm to the special architectural and historic interest of the building or group. Energy use can be reduced by means that do not harm the fabric or appearance of the building, for instance roof insulation, draught proofing and secondary glazing, more efficient boilers and heating/lighting systems, and use of green energy sources. Depending on the form of the building, renewable energy technologies may also be installed, for instance solar water heating and photovoltaics.
- 25.17 Our Camden Planning Guidance supplementary document provides further information on our approach to listed buildings.

## Map 4: Archaeological Priority Areas



This map is based on Ordnance Survey Material with the permission of Ordnance Survey on behalf of the Controller of Her Majesty's Stationery Office ©. Unauthorised reproduction infringes Crown copyright and may lead to prosecution or civil proceedings. Licence number LA100019726, year 2010.

## Archaeology

25.18 Camden has a rich archaeological heritage comprised of both above and below ground remains, in the form of individual finds, evidence of former settlements and standing structures. These remains are vulnerable to modern development and land use. There are 13 archaeological priority areas in the borough (see map 4):

- |                        |                  |                           |
|------------------------|------------------|---------------------------|
| <b>Hampstead Heath</b> | <b>Hampstead</b> | <b>Highgate</b>           |
| <b>London Suburbs</b>  | <b>South End</b> | <b>Bagnigge Wells</b>     |
| <b>St Pancras</b>      | <b>West End</b>  | <b>Canalside Industry</b> |
| <b>Kentish Town</b>    | <b>Kilburn</b>   |                           |
| <b>Battle Bridge</b>   | <b>Belsize</b>   |                           |

- 25.19 The archaeological priority areas provide a general guide to areas of archaeological remains, but do not indicate every find site in the borough. These are based on current knowledge and may be refined or altered as a result of future archaeological research or discoveries.
- 25.20 It is likely that archaeological remains will be found throughout the borough, both within and outside the archaeological priority areas. Many archaeological remains have yet to be discovered, so their extent and significance is not known. When researching the development potential of a site, developers should, in all cases, assess whether the site is known or is likely to contain archaeological remains. Where there is good reason to believe that there are remains of archaeological importance on a site, the Council will consider directing applicants to supply further details of proposed developments, including the results of archaeological desk-based assessment and field evaluation. Scheduled monument consent must be obtained before any alterations are made to scheduled ancient monuments. Camden has only one scheduled ancient monument: Boadicea's Grave in Hampstead Heath.
- 25.21 If important archaeological remains are found, the Council will seek to resist development which adversely affects remains and to minimise the impact of development schemes by requiring either in situ preservation or a programme of excavation, recording, publication and archiving of remains. There will usually be a presumption in favour of in situ preservation of remains and, if important archaeological remains are found, measures should be adopted to allow the remains to be permanently preserved in situ. Where in situ preservation is not feasible, no development shall take place until satisfactory excavation and recording of the remains has been carried out on site, and subsequent analysis, publication and archiving undertaken by an archaeological organisation approved by the Council.
- 25.22 The Council will consult with, and be guided by, English Heritage and the Greater London Archaeology Advisory Service (GLAAS) on the archaeological implications of development proposals. The Greater London Sites and Monuments Record, maintained by English Heritage, contains further information on archaeological sites in Camden. When considering schemes involving archaeological remains, the Council will also have regard to government Planning Policy Guidance (PPG) 16 – Archaeology and Planning.

## Other heritage assets

- 25.23 In addition to conservation areas, listed buildings and archaeological remains, Camden contains 14 Parks and Gardens of Special Historic Interest, as identified by English Heritage. There are also 53 London Squares in the borough protected by the London Squares Preservation Act 1931. The Council will encourage the management of Parks and Gardens of Special Historic Interest and London Squares to maintain, and where appropriate, enhance their value and protect their setting. As set out within Core Strategy policy CS14 – *Promoting high quality places and conserving our heritage*, we will consult with English Heritage over proposals affecting these parks and gardens.

### Key evidence and references

- Greater London Sites and Monuments Record; English Heritage
- Guidance on conservation area appraisals, English Heritage, 2006
- Guidance on the management of conservation areas, English Heritage, 2006

## DP26. Managing the impact of development on occupiers and neighbours

- 26.1 Camden's Core Strategy seeks to sustainably manage growth so that it takes place in the most appropriate locations and meets our needs while continuing to conserve and enhance the features that make Camden such an attractive place to live, work and visit (see policy CS1). Promoting and protecting high standards of amenity is a key element in this and will be a major consideration when the Council assesses development proposals. Core Strategy policies CS5 – *Managing the impact of growth and development* and CS14 – *Promoting high quality places and conserving our heritage* set out our overall approach to protecting the amenity of Camden's residents, workers and visitors, a major factor in people's quality of life. Policy DP26 contributes to the implementation of the Core Strategy by making sure that the impact of a development on occupiers and neighbours is fully considered.

### DP POLICY

#### DP26 – Managing the impact of development on occupiers and neighbours

The Council will protect the quality of life of occupiers and neighbours by only granting permission for development that does not cause harm to amenity. The factors we will consider include:

- a) visual privacy and overlooking;
- b) overshadowing and outlook;
- c) sunlight, daylight and artificial light levels;
- d) noise and vibration levels;
- e) odour, fumes and dust;
- f) microclimate;
- g) the inclusion of appropriate attenuation measures.

We will also require developments to provide:

- h) an acceptable standard of accommodation in terms of internal arrangements, dwelling and room sizes and amenity space;
- i) facilities for the storage, recycling and disposal of waste;
- j) facilities for bicycle storage; and
- k) outdoor space for private or communal amenity space, wherever practical.

- 26.2 Development should avoid harmful effects on the amenity of existing and future occupiers and to nearby properties. When assessing proposals the Council will take account the considerations set out in policy DP26. The Council's Camden Planning Guidance supplementary document contains detailed guidance on the elements of amenity.

#### Visual privacy, overlooking, overshadowing, outlook, sunlight and daylight

- 26.3 A development's impact on visual privacy, overlooking, overshadowing, outlook, access to daylight and sunlight and disturbance from artificial light can be influenced by its design and layout, the distance between properties, the vertical levels of onlookers or occupiers and the angle of views. These issues will also affect the amenity of the new occupiers. We will expect that these elements are considered at the design stage of a scheme to prevent potential negative impacts of the development on occupiers and neighbours. To assess whether acceptable levels of daylight and sunlight are available to habitable spaces, the Council will take into account the standards recommended in the British Research Establishment's *Site Layout Planning for Daylight and Sunlight – A Guide to Good Practice (1991)*.

## Artificial lighting levels

- 26.4 Lighting creates a sense of safety and can enable activities in the evenings and at night. It can be used to highlight landmark buildings and add vitality to our streets. Lighting can increase the potential for natural surveillance and, where used correctly, can reduce the opportunity for criminal activity and increase the likelihood of it being challenged and/or reported. However, poorly designed internal and external lighting or lighting that operates for an excessive period of time is a form of pollution that can harm the quality of life for those living nearby, affect wildlife and waste energy. Camden's dense character means that light pollution can be a bigger problem in the borough than in lower density areas where uses are not so close together. For example, lighting from conservatories can affect neighbours living above, as well as to the sides and rear, and the lighting of advertisements can affect people living nearby. Glare and light spillage from poorly designed lighting can make it less easy to see things at night and effect wildlife as well as people. Lighting should only illuminate the intended area and not affect or impact on its surroundings. Schemes involving floodlighting and developments in sensitive areas, such as adjacent to sites of nature conservation importance, should employ a specialist lighting engineer accredited by the Institute of Lighting Engineers to ensure that artificial lighting causes minimal disturbance to occupiers and wildlife. For further details on lighting and occupiers and biodiversity please see our Camden Planning Guidance supplementary document.

## Noise and vibration

- 26.5 Noise/vibration pollution has a major effect on amenity and health and can be a particularly significant issue in Camden given the borough's dense urban nature. More detail on how to prevent disturbance from noise and vibration, including the requirement for mitigation measures can be found in policy DP28.

## Odours, fumes and dust

- 26.6 Camden suffers from extremely poor air quality which has a harmful impact on health and the environment. More detail on how the Council is tackling poor air quality can be found in policy DP32. Camden Planning Guidance provides information on how developments should be designed to prevent occupants from being exposed to air pollution, including mitigation measures.





26.7 Odours, fumes and dust can be generated from commercial cooking, industrial process and construction and demolition. We will require all development likely to generate odours to prevent them from being a nuisance by installing appropriate extraction equipment and other mitigation measures. Further details on mitigation measures and where extraction equipment should be located can be found in Camden Planning Guidance. Further details on limiting noise from extraction equipment can be found in DP28. The Council will limit the disturbance from dust due to construction and demolition by expecting developers and their contractors to follow the London Councils' Best Practise Guidance *The control of dust and emissions from construction and demolition*. We will also expect developers to sign up to the Considerate Constructors Scheme. Details of how these will be implemented should be provided in a Construction Management Plan. Please see below for further details on Construction Management Plans.

## Microclimate

26.8 Developments, especially when large, can alter the local climate. For example, a light coloured building that reflects heat will stay cool on the inside and the outside, whereas a dark building will absorb heat during the day to raise internal temperatures and slowly release this heat as the temperature cools, keeping the local air temperature warmer. Buildings can also affect the flow of air and cause wind tunnels. All developments should consider local topography and the local microclimate in their design. Developments large enough to alter the local climate will be required to submit a statement demonstrating how the design has considered local conditions. Detail of what is expected in such a statement can be found in the Camden Planning Guidance.

## Attenuation measures and Construction Management Plans

26.9 Most potential negative effects of a development can be designed out or prevented through mitigation measures. For example, appropriately located and insulated extraction equipment can prevent nuisance caused by strong odours and fumes. An air tight building with mechanical ventilation and good insulation can make living adjacent to railways and busy roads acceptable with regards to noise, vibration and internal air quality. We will require any attenuation measures to be identified prior to planning permission being granted and secured for the lifetime of the development.

26.10 Disturbance from development can also occur during the construction phase. Measures required to reduce the impact of demolition, excavation and construction works must be outlined in a Construction Management Plan. We will require Construction Management Plans to identify the potential impacts of the construction phase of the development and state how any potential negative impacts will be mitigated. Construction Management Plans may be sought for:

- major developments;
- basement developments;
- developments involving listed buildings or adjacent to listed buildings;
- developments that could affect wildlife;
- developments on sites with poor or limited access; and
- developments that could cause significant disturbance due to their location or the anticipated length of the, demolition, excavation or construction period.

For further details on construction management plans please refer to our Camden Planning Guidance supplementary. Please see policy DP27 for more on our approach to basements.

## Standards of accommodation

26.11 The size of a dwelling and its rooms, as well as its layout, will have an impact on the amenity of its occupiers. Residential standards and guidance are contained in our Camden Planning Guidance supplementary document. Policy DP6 outlines our approach to Lifetime Homes and further detail can be found in Camden Planning Guidance. Details on our approach to providing facilities for waste and for bicycle storage can also be found in Camden Planning Guidance. Details on our requirements for the provision of cycle parking can be found in DP18 – *Parking standards and limiting the availability of car parking*.

26.12 Outdoor amenity space provides an important resource for residents, which is particularly important in Camden given the borough's dense urban environment. It can include private provision such as gardens, courtyards and balconies, as well as communal gardens and roof terraces. The Council will expect the provision of gardens in appropriate developments, and particularly in schemes providing larger homes suitable for families. However, we recognise that in many parts of the borough this will not be realistic or appropriate. In these locations, the provision of alternative outdoor amenity space, for example, balconies, roof gardens or communal space will be expected. These amenity spaces should be designed to limit noise and disturbance of other occupiers and so not to unacceptably reduce the privacy of other occupiers and neighbours.

### Key evidence and references

- Air Quality Action Plan 2009-13
- Camden's Noise Strategy, 2002
- Planning Policy Guidance (PPG) 24: Planning and Noise
- The London Plan (consolidated with alterations since 2004); Mayor of London; 2008
- Cleaning London's Air: The Mayor's Air Quality Strategy (2002)
- Sounder City – The Mayor's Ambient Noise Strategy; Mayor of London; 2004
- Institution of Lighting Engineers web-site, <http://www.ile.org.uk>



## DP28. Noise and vibration

- 28.1 Noise and vibration can have a major effect on amenity and health and therefore quality of life. Camden's high density and mixed-use nature means that disturbance from noise and vibration is a particularly important issue in the borough. Camden's Core Strategy recognises the importance of this issue for Camden's residents and policy DP28 contributes to implementing a number of Core Strategy policies, including CS5 – *Managing the impact of growth and development*, CS9 – *Achieving a successful Central London*, CS11 – *Promoting sustainable and efficient travel* and CS16 – *Improving Camden's health and well-being*.

### DP POLICY

#### DP28 – Noise and vibration

The Council will seek to ensure that noise and vibration is controlled and managed and will not grant planning permission for:

- a) development likely to generate noise pollution; or
- b) development sensitive to noise in locations with noise pollution, unless appropriate attenuation measures are provided.

Development that exceeds Camden's Noise and Vibration Thresholds will not be permitted.

The Council will only grant permission for plant or machinery if it can be operated without cause harm to amenity and does not exceed our noise thresholds.

The Council will seek to minimise the impact on local amenity from the demolition and construction phases of development. Where these phases are likely to cause harm, conditions and planning obligations may be used to minimise the impact.

- 28.2 The effect of noise and vibration can be minimised by separating uses sensitive to noise from development that generates noise and by taking measures to reduce any impact. Noise sensitive development includes housing, schools and hospitals as well as offices, workshops and open spaces, while noise is generated by rail, road and air traffic, industry, entertainment (e.g. nightclubs, restaurants and bars) and other uses.
- 28.3 The Council will only grant planning permission for development sensitive to noise in locations that experience noise pollution, and for development likely to generate noise pollution, if appropriate attenuation measures are taken, such as double-glazing. Planning permission will not be granted for development sensitive to noise in locations that have unacceptable levels of noise. Where uses sensitive to noise are proposed close to an existing source of noise or when development that generates noise is proposed, the Council will require an acoustic report to ensure compliance with PPG24: *Planning and noise*. A condition will be imposed to require that the plant and equipment which may be a source of noise pollution is kept working efficiently and within the required noise limits and time restrictions. Conditions may also be imposed to ensure that attenuation measures are kept in place and effective throughout the life of the development.
- 28.4 In assessing applications, we will have regard to the Noise and Vibration Thresholds, set out below. These represent an interpretation of the standards in PPG24 and include an evening period in addition to the day and night standards contained in the PPG, which provide a greater degree of control over noise and vibration during a period when noise is often an issue in the borough.

**Table A: Noise levels on residential sites adjoining railways and roads at which planning permission will not be granted**

Noise description and location of measurement	Period	Time	Sites adjoining railways	Sites adjoining roads
Noise at 1 metre external to a sensitive façade	Day	0700-1900	74 dB $L_{Aeq}$ 12h	72 dB $L_{Aeq}$ 12h
Noise at 1 metre external to a sensitive façade	Evening	1900-2300	74 dB $L_{Aeq}$ 4h	72 dB $L_{Aeq}$ 4h
Noise at 1 metre external to a sensitive façade	Night	2300-0700	66 dB $L_{Aeq}$ 8h	66 dB $L_{Aeq}$ 8h

**Table B: Noise levels on residential streets adjoining railways and roads at and above which attenuation measures will be required**

Noise description and location of measurement	Period	Time	Sites adjoining railways	Sites adjoining roads
Noise at 1 metre external to a sensitive façade	Day	0700-1900	65 dB $L_{Aeq}$ 12h	62 dB $L_{Aeq}$ 12h
Noise at 1 metre external to a sensitive façade	Evening	1900-2300	60 dB $L_{Aeq}$ 4h	57 dB $L_{Aeq}$ 4h
Noise at 1 metre external to a sensitive façade	Night	2300-0700	55 dB $L_{Aeq}$ 1h	52 dB $L_{Aeq}$ 1h
Individual noise events several times an hour	Night	2300-0700	>82 dB $L_{Amax}$ (S time weighting)	>82 dB $L_{AMAX}$ (S time weighting)

**Table C: Vibration levels on residential sites adjoining railways and roads at which planning permission will not be granted**

Vibration description and location of measurement	Period	Time	Vibration levels
Vibration inside critical areas such as a hospital operating theatre	Day, evening and night	0000-2400	0.1 VDV ms <sup>-1.75</sup>
Vibration inside dwellings	Day and evening	0700-2300	0.2 to 0.4 VDV ms <sup>-1.75</sup>
Vibration inside dwellings	Night	2300-0700	0.13 VDV ms <sup>-1.75</sup>
Vibration inside offices	Day, evening and night	0000-2400	0.4 VDV ms <sup>-1.75</sup>
Vibration inside workshops	Day, evening and night	0000-2400	0.8 VDV ms <sup>-1.75</sup>

Where dwellings may be affected by ground-borne regenerated noise internally from, for example, railways or underground trains within tunnels, noise levels within the rooms should not be greater than 35dB(A)<sub>max</sub>

**Table D: Noise levels from places of entertainment on adjoining residential sites at which planning permission will not be granted**

Noise description and measurement location	Period	Time	Sites adjoining places of entertainment
Noise at 1 metre external to a sensitive façade	Day and evening	0700-2300	$L_{Aeq}$ 5m shall not increase by more than 5dB*
Noise at 1 metre external to a sensitive façade	Night	2300-0700	$L_{Aeq}$ 5m shall not increase by more than 3dB*
Noise inside any living room of any noise sensitive premises, with the windows open or closed	Night	2300-0700	$L_{Aeq}$ 5m (in the 63Hz Octave band measured using the 'fast' time constant) should show no increase in dB*

\* As compared to the same measure, from the same position, and over a comparable period, with no entertainment taking place

**Table E: Noise levels from plant and machinery at which planning permission will not be granted**

Noise description and location of measurement	Period	Time	Noise level
Noise at 1 metre external to a sensitive façade	Day, evening and night	0000-2400	5dB(A) <LA90
Noise that has a distinguishable discrete continuous note (whine, hiss, screech, hum) at 1 metre external to a sensitive façade.	Day, evening and night	0000-2400	10dB(A) <LA90
Noise that has distinct impulses (bangs, clicks, clatters, thumps) at 1 metre external to a sensitive façade.	Day, evening and night	0000-2400	10dB(A) <LA90
Noise at 1 metre external to sensitive façade where LA90>60dB	Day, evening and night	0000-2400	55dBL $_{Aeq}$

#### Key evidence and references

- Camden's Noise Strategy, 2002
- The London Plan (Consolidated with Alterations since 2004), 2008
- Planning Policy Guidance 24: Planning and noise

## DP29. Improving access

- 29.1 Part of achieving the Community Strategy vision of making Camden a borough of opportunity is making sure everyone has access to important facilities, such as housing, jobs, educational opportunities and community facilities. Good access benefits everyone. However, many people are disadvantaged by poor access to facilities and buildings and vulnerable and disadvantaged groups, such as the elderly and disabled people, can be particularly affected. Poor access can also be caused by difficulties in using the facilities themselves.
- 29.2 Policy DP29 contributes to the implementation of Core Strategy policy CS14 – *Promoting high quality places and conserving our heritage* which seeks the highest standards of access in all buildings and places. It also helps to deliver elements of policies CS1 – *Distribution of growth*, CS5 – *Managing the impact of growth and development* and CS11 – *Promoting sustainable and efficient travel*.

### DP POLICY

#### DP29 – Improving access

The Council will seek to promote fair access and remove the barriers that prevent people from accessing facilities and opportunities. We will:

- a) expect all buildings and places meet the highest practicable standards of access and inclusion;
- b) require buildings and spaces that the public may use to be designed to be as accessible as possible;
- c) expect facilities to be located in the most accessible parts of the borough;
- d) expect spaces between buildings to be fully accessible;
- e) encourage accessible public transport;
- f) secure car parking for disabled people; and
- g) secure accessible homes.

- 29.3 Many people experience difficulties in using buildings and spaces as their access needs are ignored or considered too late in the development process to ensure the removal of barriers that can exclude or segregate. We will seek to make sure that any expansion of activities that are likely to lead to a significant increase in travel demand are located in the parts of the borough that can be most easily reached by walking, cycling and public transport.
- 29.4 The Council will require new buildings and spaces that the public may use to be fully accessible to promote equality of opportunity. As accessibility is influenced by perceptions as well as physical factors, buildings should also be designed to appear, as well as be, accessible. We will require a Design and Access Statement for new developments of public buildings and spaces to show how the principles of inclusive design, including the specific needs of disabled people, have been integrated into the proposed development, and how inclusion will be maintained and managed.
- 29.5 The Council will balance the needs of people with mobility difficulties with the interests of conservation and preservation. We will seek sensitive design solutions to achieve access for all to, and within, listed buildings that require public access. Policy DP25 – *Conserving Camden’s heritage* sets out our detailed approach to development affecting listed buildings.



- 29.6 Making sure that people can move through streets and places, easily and safely is as important as making the buildings themselves accessible. The Council will seek improvements for pedestrians and people with disabilities to ensure good quality access and circulation arrangements, including improvements to existing routes and footways. The Camden Streetscape Design Manual and our Camden Planning Guidance supplementary document provide further more detailed guidance on this issue.
- 29.7 The Council aims to increase the attractiveness of public transport by creating networks which make people feel safe, link to all parts of the borough and enable use by people with mobility difficulties. The provision of public transport allows independence in travel choices and is vital to those without access to, or without the means to use, a car. We are committed to a number of public transport improvement schemes to increase public transport capacity and to improve accessibility throughout the borough. The Core Strategy gives further detail on the key transport infrastructure proposals that are being promoted in Camden, in particular in policies CS2 – *Growth areas* and CS11 – *Promoting sustainable and efficient travel* and Core Strategy Appendix 1 – *Key Infrastructure Programmes and Projects*.
- 29.8 While the Council encourages public transport and car-free schemes, in line with sustainable development objectives, we recognise that some disabled people rely on private motorised transport. We will therefore require relevant planning applications to demonstrate how the needs of disabled drivers have been addressed. We will also welcome disabled parking and drop-off facilities which are integrated with public transport facilities.
- 29.9 The Council believes that new housing should allow less mobile residents to live as independently as possible. Accessible homes give them greater choice about where to live and mean people are less likely to need to move when they become less mobile. The Council will therefore seek to secure ‘lifetime homes’, which are designed to meet the differing requirements created by changing life circumstances, and housing accessible to wheelchair users. Detail on the Council’s approach to lifetime homes and wheelchair housing is set out in policy DP6 – *Lifetime homes and wheelchair homes*.

#### Key evidence and references

- The London Plan (consolidated with changes since 2004); Mayor of London; 2008
- Camden Streetscape Design Manual
- Easy Access to Historic Buildings, English Heritage, 2004

## DP31: Provision of, and improvements to, open space and outdoor sport and recreation facilities

- 31.1 Public open space and outdoor sport and recreation facilities are of great importance in Camden in terms of health, play, culture, social interaction, biodiversity, growing food and in providing breaks in our built-up area. The borough has over 250 designated parks and open spaces, ranging from local play areas to Hampstead Heath. Our open spaces include parks, natural green spaces, play spaces, outdoor sport and recreation facilities, community gardens and allotments; while sports and recreation facilities include sports halls, swimming pools and tennis courts. There are large discrepancies across the borough with regards to open space provision. Some areas have low levels of open space with limited opportunities for additional spaces to be provided, while other areas have large metropolitan or regional parks, which provide for a range of open space uses.
- 31.2 Camden Core Strategy policy CS15 – *Protecting and improving our parks and open spaces and encouraging biodiversity* protects Camden’s limited open space and seeks to secure additional open space as well as improvements to existing open spaces. Core Strategy policy CS10 – *Supporting community facilities and services* promotes the provision of community facilities including open space and outdoor sports and leisure facilities. Policy DP31 helps to deliver the strategy set out in Core Strategy policy CS15 – *Protecting and improving our parks and open spaces and encouraging biodiversity* by giving further detail on how we will secure the provision and improvements to open space, sport and recreation facilities. Policy DP31 should be read in conjunction with Core Strategy policies CS15 and CS10. We will use Camden’s Site Allocations document to promote areas and development sites where the Council will expect new public open space to be incorporated within development proposals.

### DP POLICY

#### DP31 – Provision of, and improvements to, open space and outdoor sport and recreation facilities

To ensure the quantity and quality of open space and outdoor sport and recreation facilities in Camden are increased and deficiencies and under provision are not made worse, the Council will only grant planning permission for development that is likely to lead to an increased use of public open space where an appropriate contribution to the supply of open space is made. Priority will be given to the provision of publicly accessible open space.

#### Open space standard

- 31.3 The Camden Open Space, Sport and Recreation Study Update 2008 found that Camden has 17sqm of open space per person, applying the assessment method outlined in Planning Policy Guidance 17: Planning for open space, sport and recreation. In accordance with PPG17, parts of the borough that do not have access to 17sqm of open space are considered to be deficient in open space. However, there are large discrepancies in the provision of open space across Camden due to the presence of Hampstead Heath, Regent’s Park and Primrose Hill. For example, Kentish Town and the western part of Camden have an average of 2sqm of open space per person living in the area, while the residents and occupiers of the Hampstead and Highgate areas have 85sqm of open space per person. Given these large discrepancies, the Core Strategy outlines and identified areas that are considered to have an under-provision of open space. When

the amount of open space is averaged out for the areas without one of the large parks mentioned above, there is approximately 9sqm of open space per person in the borough. The Council will therefore apply a standard of 9 sqm per person when assessing the appropriate contributions to open space from residential developments.

31.4 Camden's Central London area experiences additional pressure on its limited open space from the substantial number of people who work in the area. The Camden Open Space, Sport and Recreation Study Update 2008 found that there is 0.74sqm of open space per worker within Central London. To ensure that this situation is not made worse, the Council will apply a standard of 0.74sqm of open space per person when assessing appropriate contributions to open space from commercial developments in Central London. In accordance with the Camden Open Space, Sport and Recreation Study Update 2008 we will consider 19sqm of commercial floorspace as catering for one worker.

31.5 When assessing the amount of open space to be provided, the Council will take account of a development's contribution towards other policy aims and priorities. Our priority for open space provision is for on-site public open space provision. Where on-site open space is provided we will take into account the characteristics of the site and its relationship with adjoining development when negotiating the level of open space provision.

### **Developments considered to increase demand for open space**

31.6 All developments that increase the demand for public open space facilities will be expected to make an appropriate contribution to meeting that additional demand. Schemes considered to increase the demand for public open space are:

- schemes of 5 or more additional dwellings;
- student housing schemes creating 10 or more units/rooms or occupiers; and
- developments of 500sqm or more of floorspace that are likely to increase the resident, worker or visitor populations of the borough.

### **Open space priorities and thresholds for types of open space provision**

31.7 Camden's Core Strategy identifies areas with an under-provision of open space as well as areas deficient in open space (see policy CS15). In these areas, the priority will be for the provision of open space on development sites. Our Site Allocations Local Development Framework document will identify development sites considered suitable to provide open space on the site. Any other sites that would result in an increased demand for open space and meet the thresholds in the Table 1 below will also be expected to provide open space on site. We will expect on-site open space to be incorporated from the initial layout and design stage to ensure its inclusion in development proposals. The Council's priority for on-site provision will be play and informal recreation facilities for children and young people and provision for residents, especially allotment or community garden space where these are appropriate. Further details on the type of open space sought is set out in our Camden Planning Guidance supplementary document.





**Table 1. Thresholds for open space provision on-site**

Type	Threshold
Public open space	100 dwellings or 30,000sqm of any floorspace
Children’s play space – ‘Doorstep’ ‘Local’ ‘Neighbourhood’	60 dwellings 100 dwellings 150 dwellings
Natural and semi-natural greenspace	60 dwellings
Allotments	200 dwellings

(Camden Open Space, Sport and Recreation Study Update 2008)

- 31.8 The Camden Open Space, Sport and Recreation Study Update 2008 also identifies needs and recommends approaches for play space, natural and semi-natural green space and allotments. As a guide, 2.5sqm of the 9sqm of open space provision expected should be in the form of child play space. In addition, no more than 4.5sqm of the 9sqm should be provided as natural green space, except where the improvement is to a Site of Nature Conservation Importance or a local nature reserve where it may be appropriate for all open space provision to be for natural green space improvements. The Council will seek open space that is predominantly soft landscaping and not substantially paved. Areas that need to be paved because of the number of anticipated pedestrians may not be considered to contribute towards the open space provision; for example where the paved area is narrow and does not form part of a wider open space so there would be no opportunity for it to be used for amenity purposes. Due to the very high demand and limited possibilities to provide new allotments or community gardens, they should be provided, wherever possible.
- 31.9 Many development sites will be too small to provide open space on-site. Where this is the case, developments should provide an appropriate financial contribution towards improving existing open space. When assessing the level of contribution, the Council will also take into account any contribution made by private amenity space, private open space and other land (although these types of provision are not considered a substitute for public open space). Please see Camden Planning Guidance for further details on the types of open space and our approach to open space contributions.



- 31.10 The Council will seek opportunities to bring private open space into public use and for development sites adjacent to existing open space to increase the size of the open space, where practicable. We are especially keen to secure vacant land as open space for nature conservation use.
- 31.11 The Camden Open Space, Sport and Recreation Study Update 2008 also includes recommendations on how to best meet our open space needs and priorities. We will use these recommendations when negotiating open space provision, as well as the Council's Open Space Strategy for Camden 2006-2011, existing plans for the management of open space, and the site's proximity to deficiencies and under provision in open space. We will also take into account exercise rates and obesity levels in the surrounding area. Our Camden Planning Guidance supplementary document provides further details on how open space should be provided and how it will be secured by the Council.

#### Key evidence and references

- Camden Open Space, Sport and Recreation Study Update; Atkins; 2008
- Planning Policy Guidance (PPG) 17 : Planning for open space, sport and recreation; ODPM; 2004
- The London Plan (consolidated with Alterations since 2004); Mayor of London; 2008
- Supplementary Planning Guidance: Providing for Children and Young People's Play and Informal Recreation; Mayor of London; 2008.
- Open space strategy for Camden 2006-2011

