

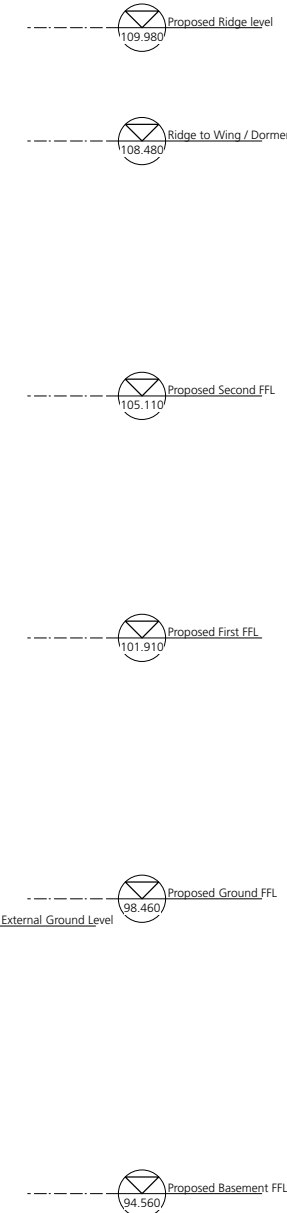


CCTV Camera
(Ref. AXIS M30-VE)
Motion Detector
(Ref. D-Tect 3)
*These 2 items may be able to be
positioned under the eaves (to be
determined on site with ADIT / TFA/
RDS)*

Motion Detector
(Ref. D-Tect 3)

Motion Detector
(Ref. D-Tect 3)
CCTV Camera
(Ref. AXIS M30-VE)

CCTV Camera
(Ref. AXIS M30-VE)



NOTES

All Dimensions are from structure to structure unless indicated otherwise.
Elements of structure and services are indicated for coordination purposes. For full structural and services layouts refer to Structural and Services Engineers' drawings.
Do not scale directly from drawing. All dimension to be checked on site prior to construction or fabrication of any elements.
Any discrepancies between figured dimensions to be reported to architect for clarification prior to commencing work.
For legend see signature sheet 103_B07_001.
© Copyright Reserved

Rev	Date	Comments
A	09_12_14	Setting out info. added

TONY FRETTON ARCHITECTS

Tony Fretton Architects Ltd
Highgate Studios, 53-79 Highgate Road, London NW5 1TL
T: +44(0)20 7284 2000 F: +44(0)20 3227 1055
www.tonyfretton.com mail@tonyfretton.com

Job No:	251
Project:	Templewood Avenue
Drawing title:	South Elevation CCTV/ Alarm Positions
Scale:	1:50 @ A1 & 1:100 @ A3
Origination Date:	October, 2011
Status:	Stage F
Drawing No:	251_F_9395
Rev	A

