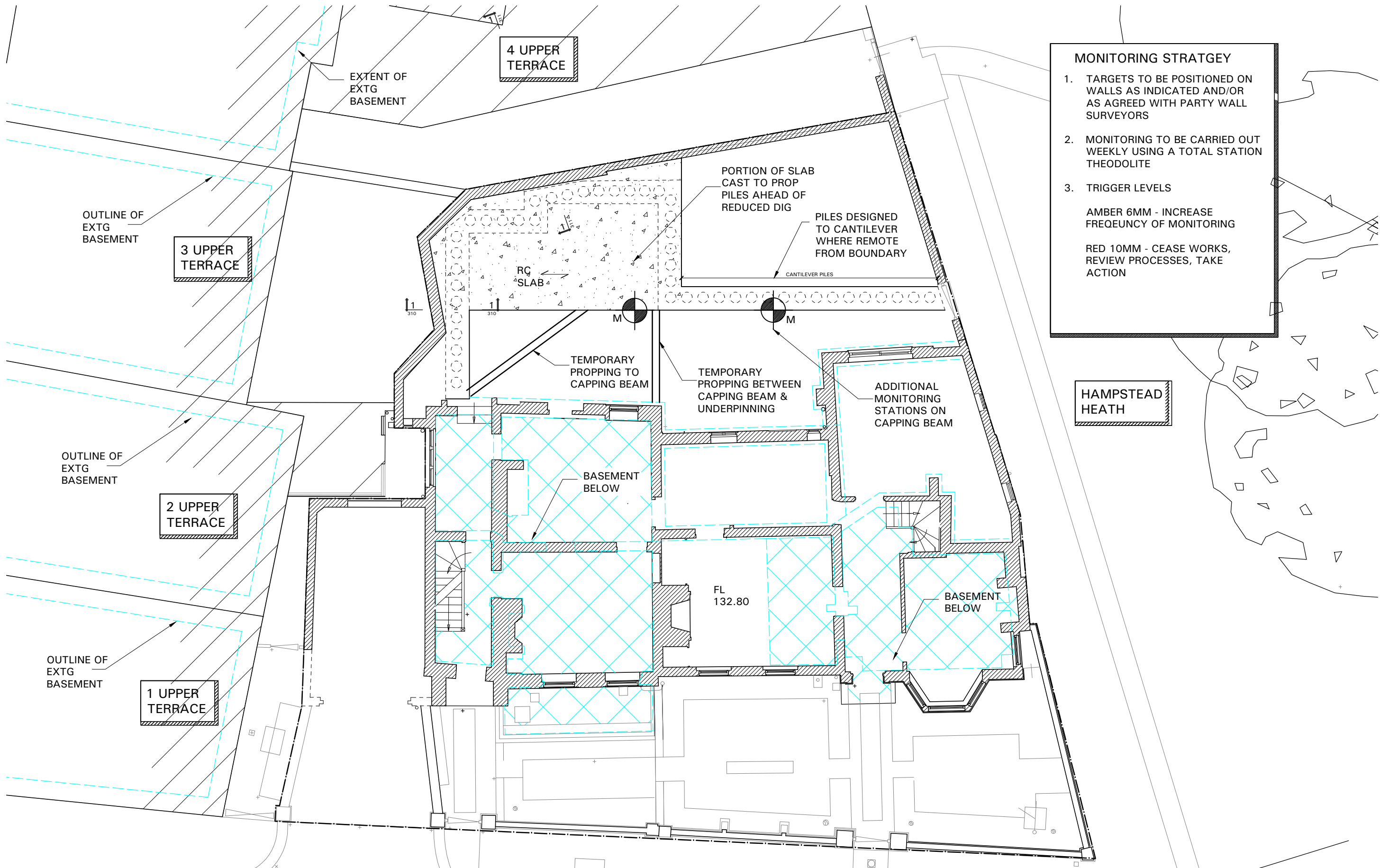


F:\Projects\0000 - 6999\6036 - Capo Di Monte, Windmill Hill, London NW3 6RJ\11 Drawings\11.3 MBP AutoCAD\capo.dwg USER: Julian Birch FILE SIZE = 2.59



MONITORING STRATEGY

1. TARGETS TO BE POSITIONED ON WALLS AS INDICATED AND/OR AS AGREED WITH PARTY WALL SURVEYORS
2. MONITORING TO BE CARRIED OUT WEEKLY USING A TOTAL STATION THEODOLITE
3. TRIGGER LEVELS

AMBER 6MM - INCREASE FREQUENCY OF MONITORING

RED 10MM - CEASE WORKS, REVIEW PROCESSES, TAKE ACTION

HAMPSTEAD
HEATH

Job
CAPO DI MONTE
WINDMILL HILL
LONDON NW3

Scale
1:100@A3

Date
FEB 15

By
AJB

Checked
-

Status
PRELIMINARY

Title
EXISTING GROUND FLOOR PLAN
ILLUSTRATING PROPPING
TO FACILITATE REDUCED DIG

Drawing Number
6036 / 308

Revision
P1

MBP Michael Barclay Partnership

consulting engineers

105-109 Strand

London WC2R 0AA

T 020 7240 1191 F 020 7240 2241

E london@mbp-uk.com

www.mbp-uk.com

Rev	Date	Description
P1	FEB 15	PRELIMINARY ISSUE

By