

line of third floor extension at 69 South Hill Park

line of third floor extension at 69 South Hill Park

line of third floor extension at 67 South Hill Park

line of third floor extension at 67 South Hill Park

rooflight above

REV B: New mansard wall - clad in dark grey/black tile

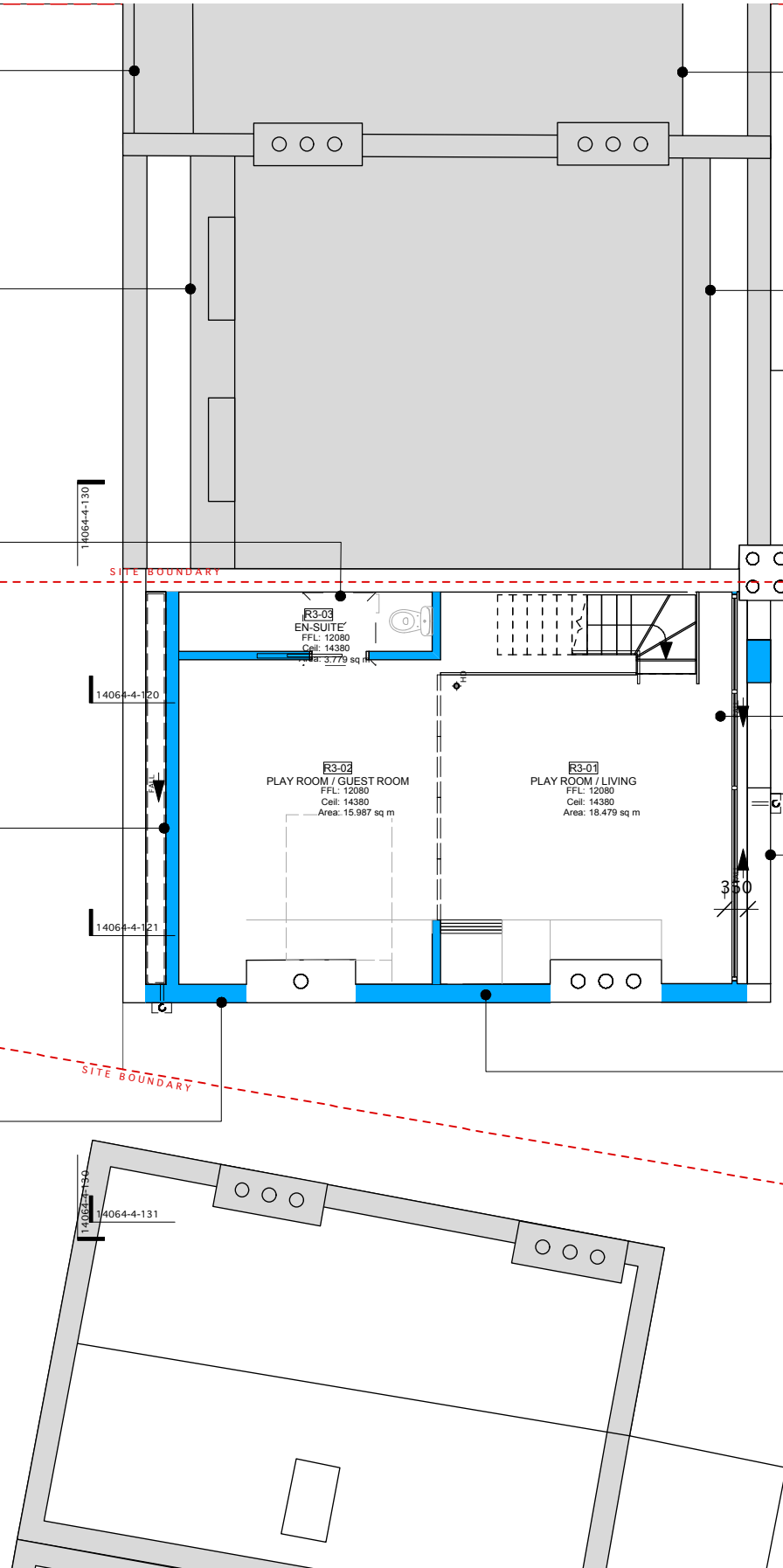
REV B: NO new window

Metal framed glazing system to match ground floor extension to rise at 70deg angle

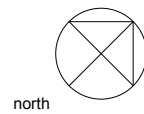
Butterfly roof profile maintained on rear elevation

Gable wall built up to match height of party wall between 65 and 67 South Hill Park

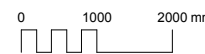
New openable casement window in gable wall



revisions



north



To be read in conjunction with all relevant information

project 65 South Hill Park, London, NW3 2SS  
 for Sue and Michael Harris  
 title Third Floor Plan (Proposed)

status Planning Application

|       |      |                |
|-------|------|----------------|
| scale | size | drawing number |
| 1:100 | A3   | 14064-PL-113   |

rev. B

**andrew mulroy architects ltd**

C1A Linton House, 39-51 Highgate Road  
London NW5 1RT

telephone 020 7284 2712  
 e-mail mail@mulroy.info  
 web www.mulroy.info