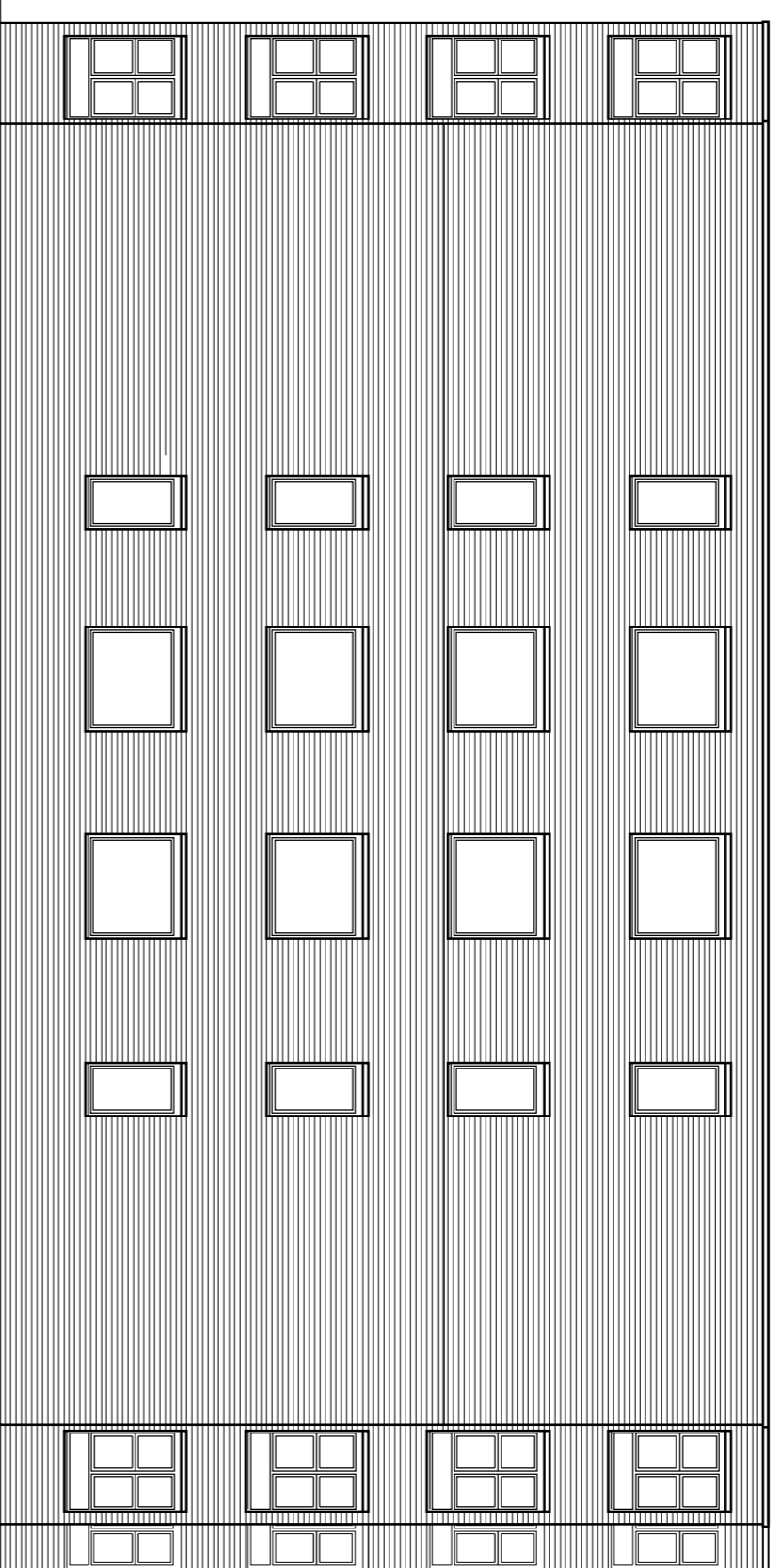
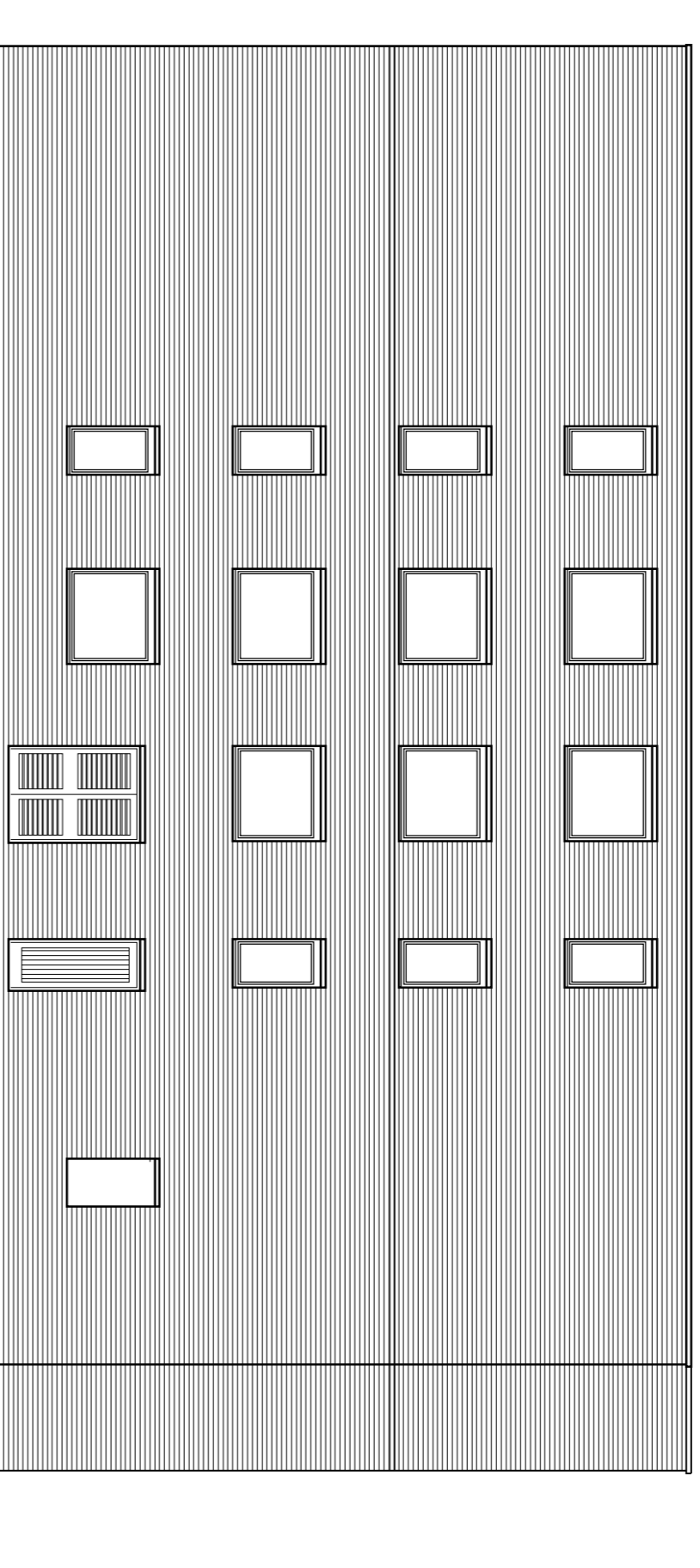


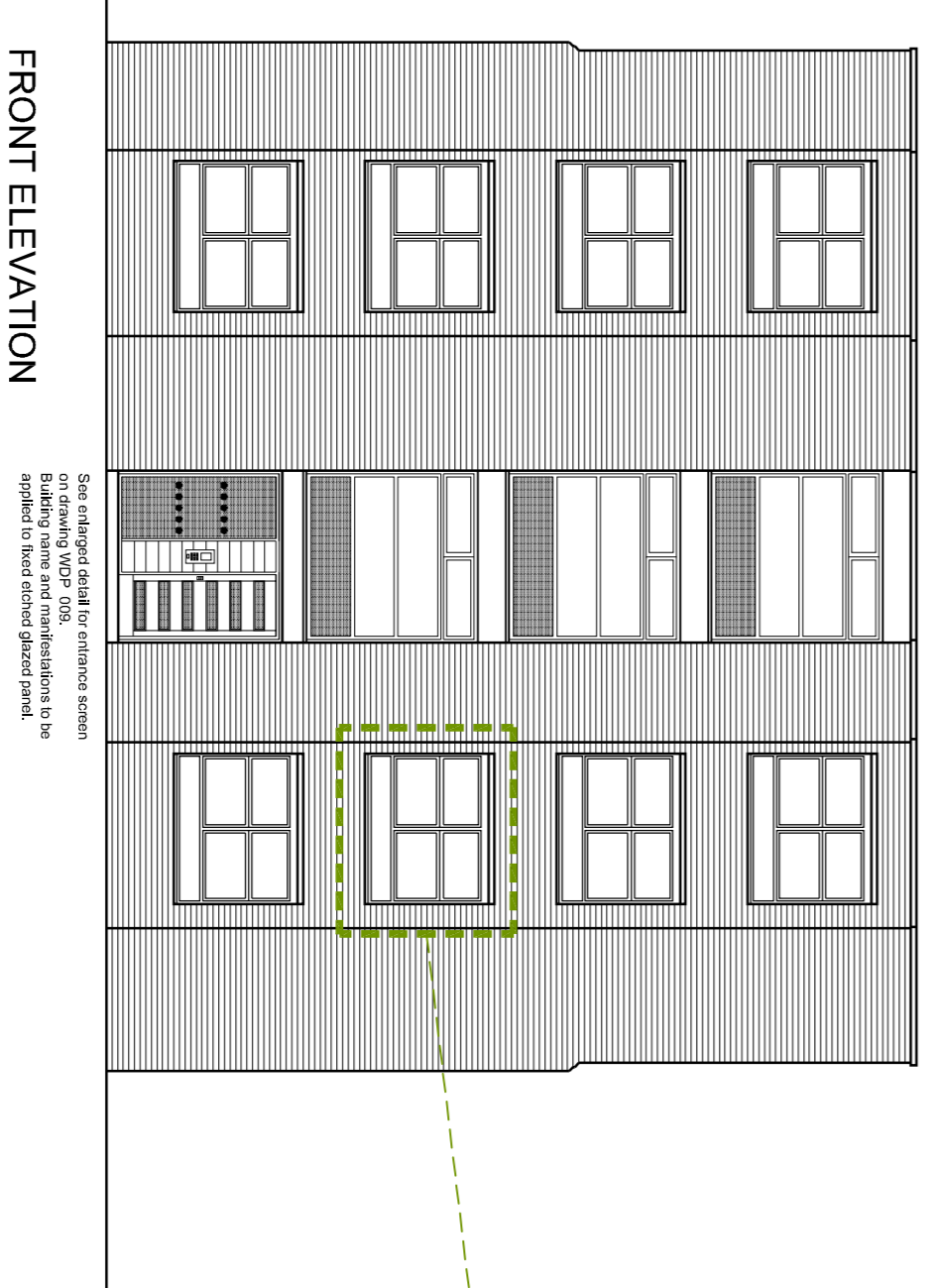
# 15 Akenside Road, London, NW3 5BT.



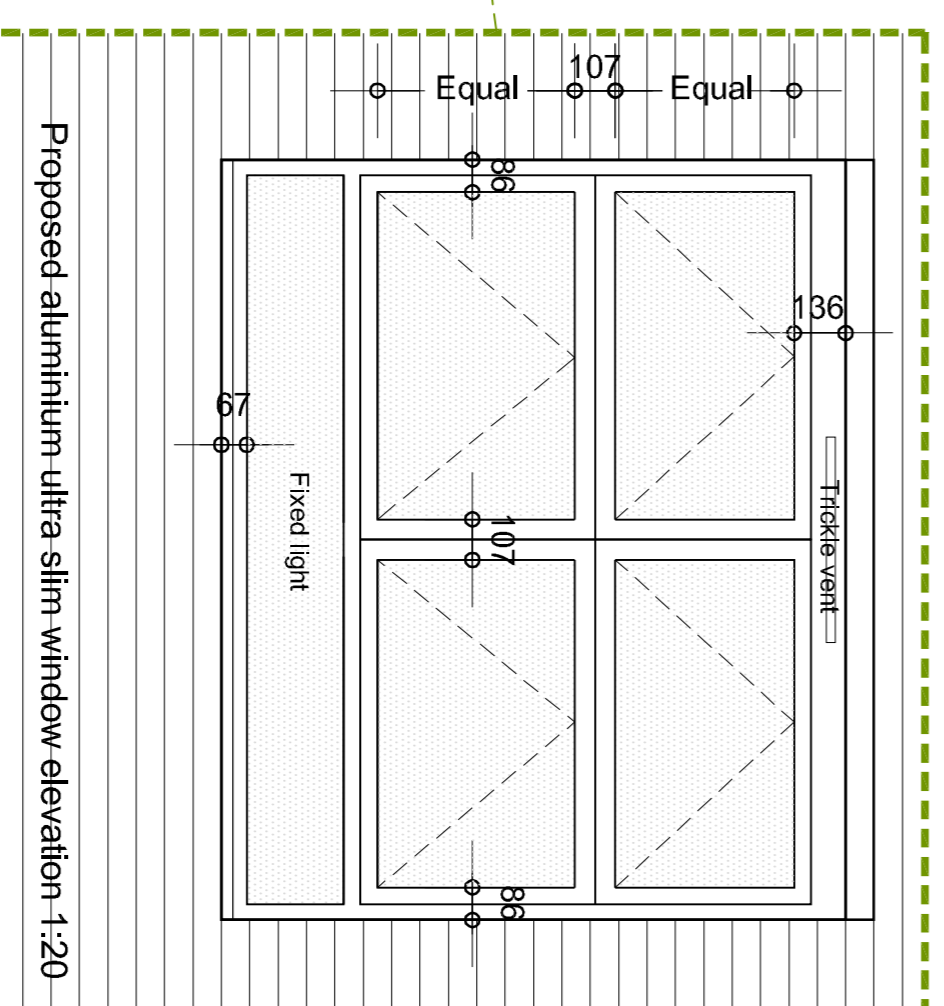
FRONT ELEVATION



REAR ELEVATION

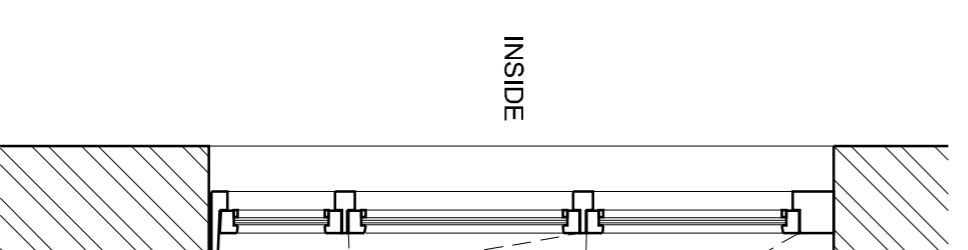


FRONT ELEVATION



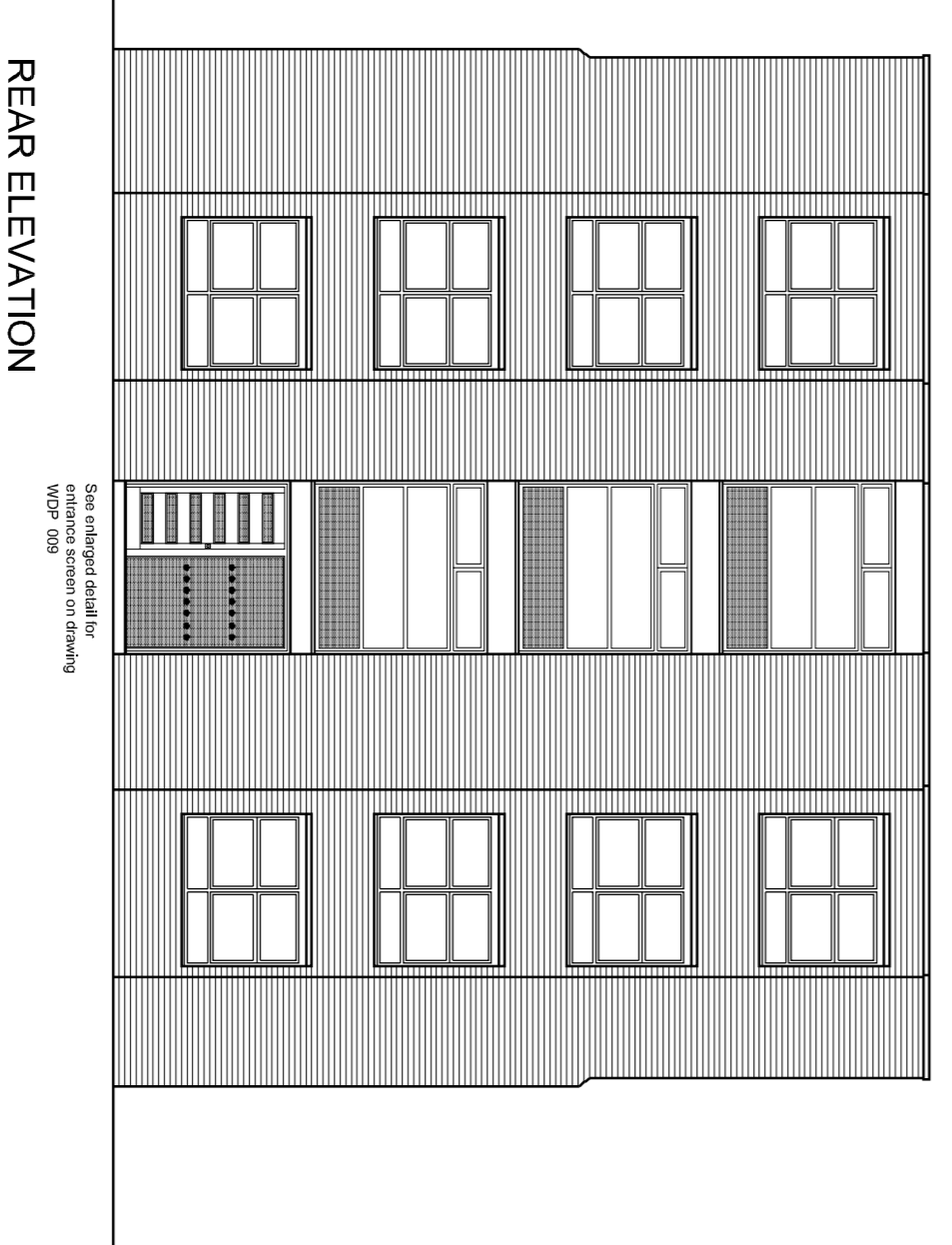
Proposed aluminium ultra slim window elevation 1:20

Planning permission granted for replacement of all windows using ultra-slim coated aluminium ref: 2014/7859/P dated 16th February 2015. This application refers to the change of design only to the front and rear elevation reception windows to improve health and safety and ventilation issues.



Section - Proposed aluminium ultra slim window section 1:20

Opening mid light fixed with toughened glass to prevent more than 100mm opening.  
Fixed toughened glass bottom panel



REAR ELEVATION

## NOTES

DO NOT SCALE FROM DRAWINGS.  
MEASURE ON SITE  
READ IN CONJUNCTION WITH  
SPECIFICATION, AND OTHER  
DRAWINGS  
EXTERNAL FINISHES TO BE:

Rev. D - Final planning update 10.03.15  
Rev. C - Windows set out added 01.03.15  
Rev. B - Windows set out added 13.02.15  
Rev. A - Windows shown as existing 07.02.15

**MORFELD EVEREST**  
Commercial Building Services  
Herford Oak Studio 161 BUCKLE STREET  
ROBEY  
MANSOURIAH  
LEICESTERSHIRE  
LE12 5JG  
Fax: 01534 862211

PROJECT NAME  
15, Akenside Road, London  
PROJECT No  
AR

SCALE @ A1  
1:100  
CHK'D RT

DRAWING NAME  
Proposed elevations & window details

DWG No WDP 007  
REV No D