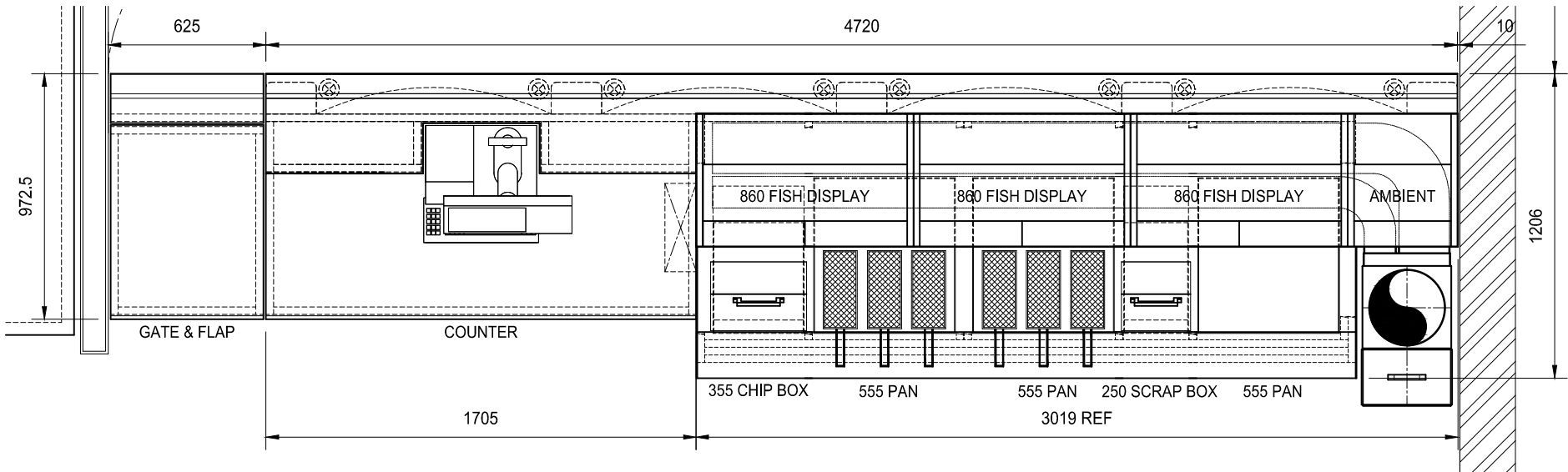


Revisions								
Rev	Description	Date	Rev	Description	Date	Rev	Description	Date
A	ISSUED FOR CLIENT APPROVAL	14-10-2014	B	ELEVATION AND RANGE EXTRACT SYSTEM ADDED	15-10-2014	C	ODOUR CONTROL REMOVED, EXTRACTION AMENDED	26-01-2015



LARGE SCALE PLAN OF RANGE AND COUNTER
SCALE 1:25

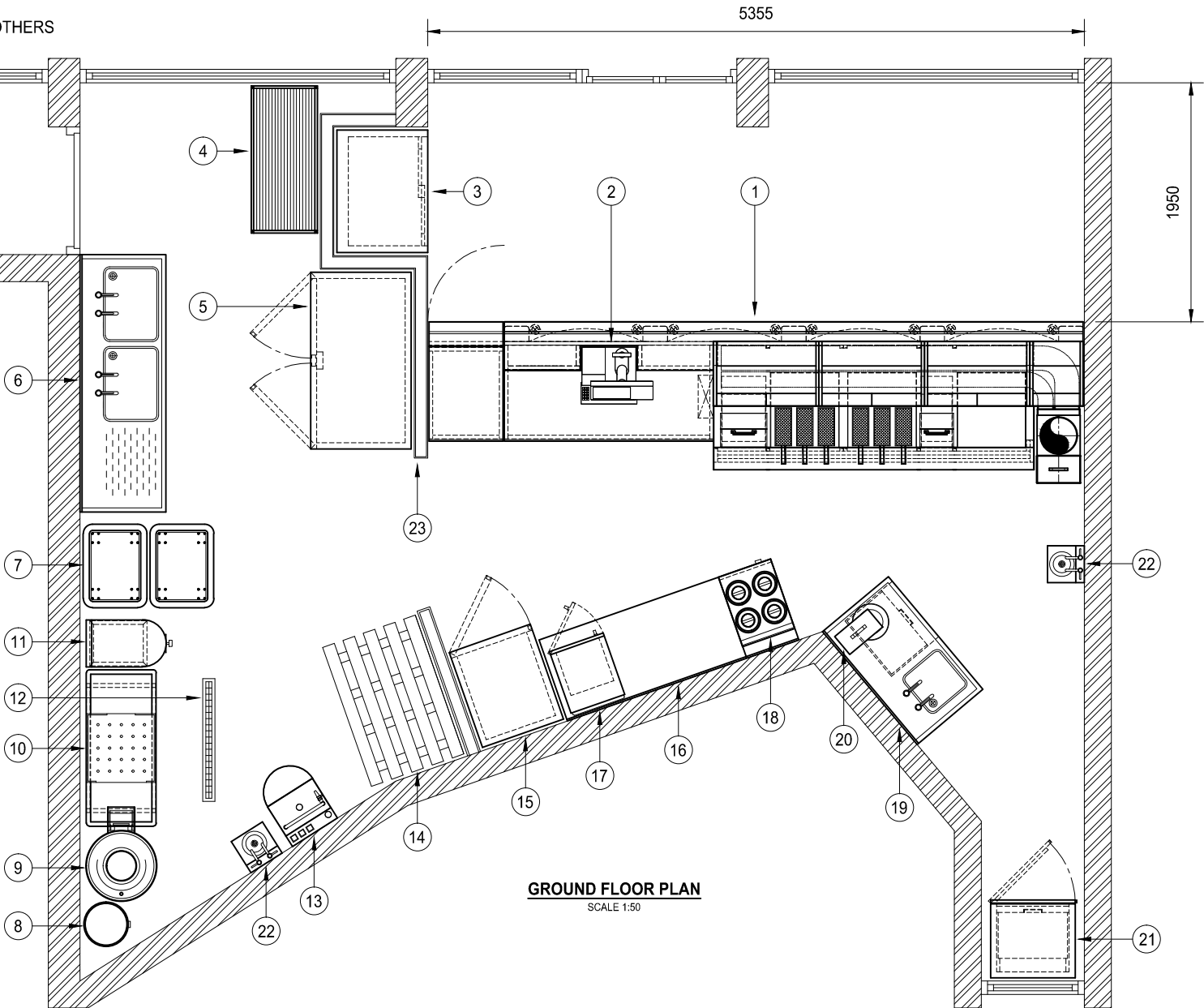
CLIENT APPROVAL


- HOPKINS COUNTER RANGE COMPLETE WITH CUT OUT TO SERVING SHELF FOR ITEM 2
- CUSTOMERS OWN TILL
- FSC1000S DOUBLE SLIDING GLASS DOOR POP FRIDGE
- 1200x540 4-TIER PERFORATED SHELVING UNIT
- FOSTER EP1440L UPRIGHT DOUBLE DOOR FREEZER
- 2100x700 DOUBLE LARGE BOWL SINK AND DRAINER
- 2x 36 GALLON CHIP TUBS
- HOPKINS INTERCEPTOR TANK
- HOPKINS HP25-56 PEELER
- HOPKINS EYEING TANK
- HOPKINS HC1 CHIPPER
- FLOOR DRAIN BY OTHERS
- MERLIN PORTABLE FAT FILTRATION MACHINE
- HOPKINS 1200x800 POTATO PALLET
- FOSTER EP700H UPRIGHT REFRIGERATOR
- 2000x700 WALL BENCH COMPLETE WITH DROP DOWN SECTION TO LEFT HAND SIDE
- SAMSUNG CM1929 MICROWAVE OVEN
- LINCAT BS4W BAIN MARIE
- 1200x700 FISH PREP BENCH COMPLETE WITH SINGLE BOWL AND 1x BANK OF 4 DEFROST DRAWER RUNNERS
- HOPKINS BATTER MIXER
- XL FR20 FISH FRIDGE
- 2x WASH HAND BASINS
- STUD PARTITION WALLS AND WC BY OTHERS

NOTES

- THE INSTALLATION OF UTILITY SERVICES, GAS, WATER, ELECTRICITY AND DRAINAGE AND THEIR INSTALLATION LOCAL TO EQUIPMENT AND APPLIANCES BY OTHERS.
- ALL BUILDERS WORK INCLUDING BLOCK AND STUD PARTITION WALLS, MAKING GOOD AND WEATHERING OF THE WALLS AND ROOF STRUCTURE BY OTHERS. ALL TRENCH DIGGING OUT, REFILLING AND FLOOR ACCESS BY OTHERS.
- THE RANGE WILL REQUIRE A DEDICATED EXTRACTION SYSTEM, ROUTE SUBJECT TO CONFIRMATION.
- THE RANGE EXTRACTION SYSTEM WILL BE MANUFACTURED FROM GALVANISED STEEL WITH THE EXCEPTION OF ITEMS IN THE SHOP AREA WHICH ARE VISIBLE TO CUSTOMERS, THESE ITEMS ONLY WILL BE MANUFACTURED FROM STAINLESS STEEL
- ALL RANGE EXTRACT DUCTWORK WILL REQUIRE ACCESS DOORS LOCATED AT 1250mm CTS

MANUFACTURING NOTES			
Fryer Type	COUNTER RANGE. FLAT TOP. HIGH EFFICIENCY.		
Gas Type	NATURAL	Controls	DIGITAL
Pan(s)	3x 555x610		
Chip Box	1x 355		
Tool Box	1x 250		
Fish Racks	CURVED		
Downlights	YES	Colour	TBC
Pillars	YES		
Pillar Script	N/A		
Illumination	N/A		
Laminate	N/A		
CLADDING DETAILS			
Displays	POLISHED	Serve Shelf	SATIN
Apron	SATIN	Doors	SATIN
Pillars	POLISHED	Panel	SATIN
Wrapping & Under Shelf	SATIN		
Remaining Cladding	SATIN		
SERVICES REQUIREMENTS			
Electric	TBC		
Gas	75kW SUPPLY TO RANGE		
Ventilation	911cm2. 302mm x 302mm.		
PLEASE NOTE IN ACCORDANCE WITH BS 6841:2005 FOR THE EQUIPMENT SHOWN IN THIS DRAWING ONLY YOU WILL NEED FIXED VENTILATION AS INDICATED ABOVE. IT IS THE RESPONSIBILITY OF THE END USER TO ENSURE SUFFICIENT PERMANENTLY OPEN VENTILATION. AS GAS SAFETY REGISTERED INSTALLERS WE ARE NOT ALLOWED TO COMMISSION GAS EQUIPMENT IF THERE IS INSUFFICIENT FIXED AIR VENTILATION.			



										Status: NOT FOR MANUFACTURE					
Drawn	I.B.	Date	13-10-2014	Designer	M.H.	Checked	M.H.	Scale	1:25:50	Revision	C	Dwg No	MHQ479(1)	Job No	-
Client ANTHONY LUM anthony@firstcreation.com				Project BELSIZE ROAD LONDON NW6 4AQ				Title GROUND FLOOR PLAN PROPOSED INSTALLATION OF RANGE AND ASSOCIATED APPLIANCES				Hopkins Catering Equipment Ltd. Valley Mills, 151 Kent Road, Pudsey, West Yorkshire. LS28 9NF.  Tel: 0113 257 7934-Fax: 0113 257 6759-Email: sales@hopkins.biz-Website: www.hopkins.biz			