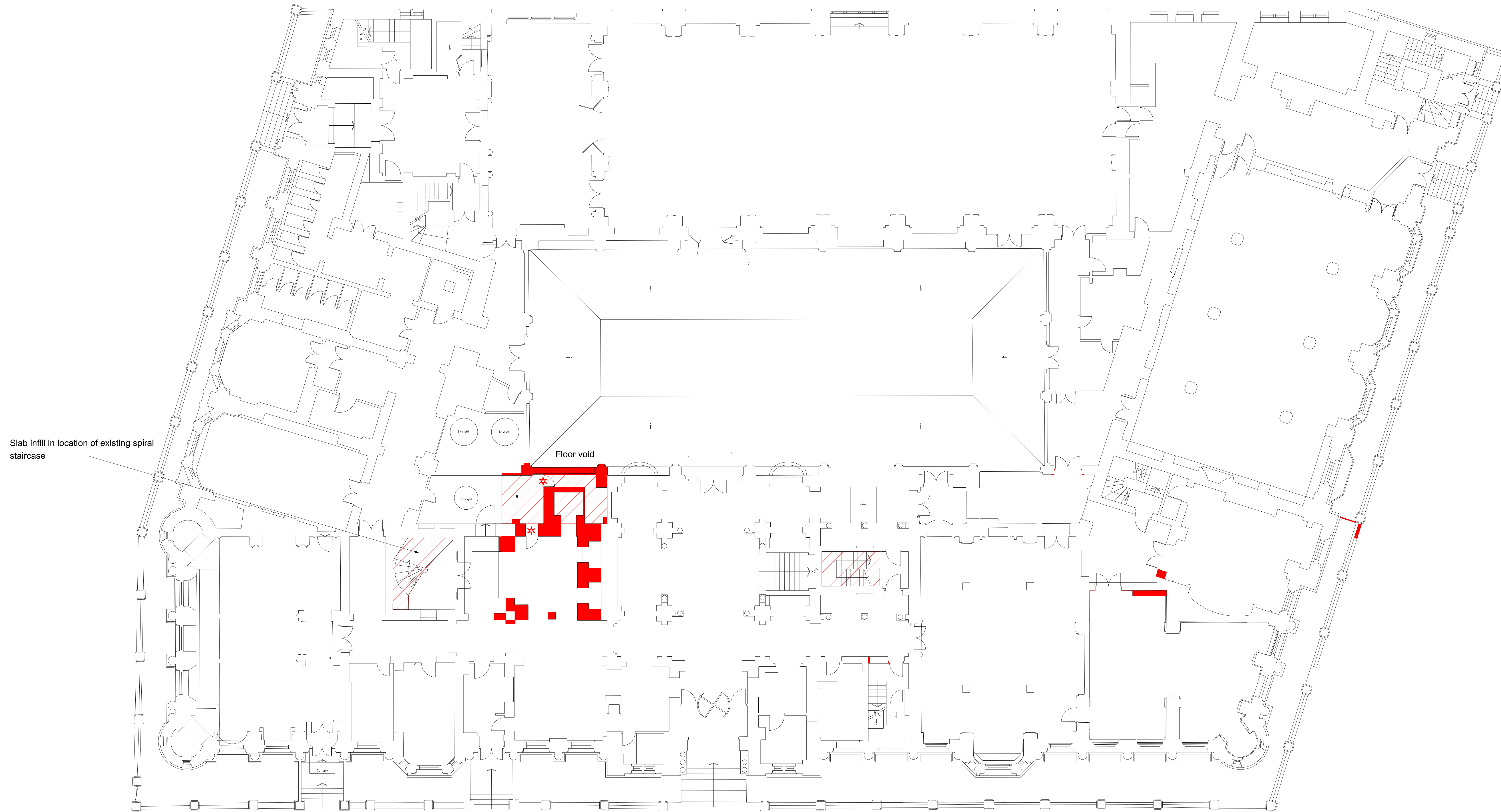


ENABLING WORKS STRIP-OUT /  
DEMOLITION - LEGEND / NOTES

- Remove section of wall (full height).
- Remove section of slab/staircase/section of roof etc.
- \* Existing doors and windows to be stripped out.



Slab infill in location of existing spiral staircase

Floor void

Keyplan

North

Notes:  
1. Do not scale  
2. Contractor to Check all dimensions and report omissions and errors to the Architect

02 Updated Planning Application Submission	06.02.15 ML
01 Planning Application Submission	03.02.15 ML
No Revision	Date Initial Chkd

**EPR**  
architects  
30 Millbank  
London SW1P 4DU  
+44 (0) 20 7932 7600  
www.epr.co.uk

Russell Hotel  
Bloomsbury  
Ground Floor  
Strip-out Plan

PLANNING 1: 100 @ A0 06.02.15

Project No	Type	Bldg	Number	Zone/Lvl	Rev
10089 - T - 01 - 1421 - Z00					02