

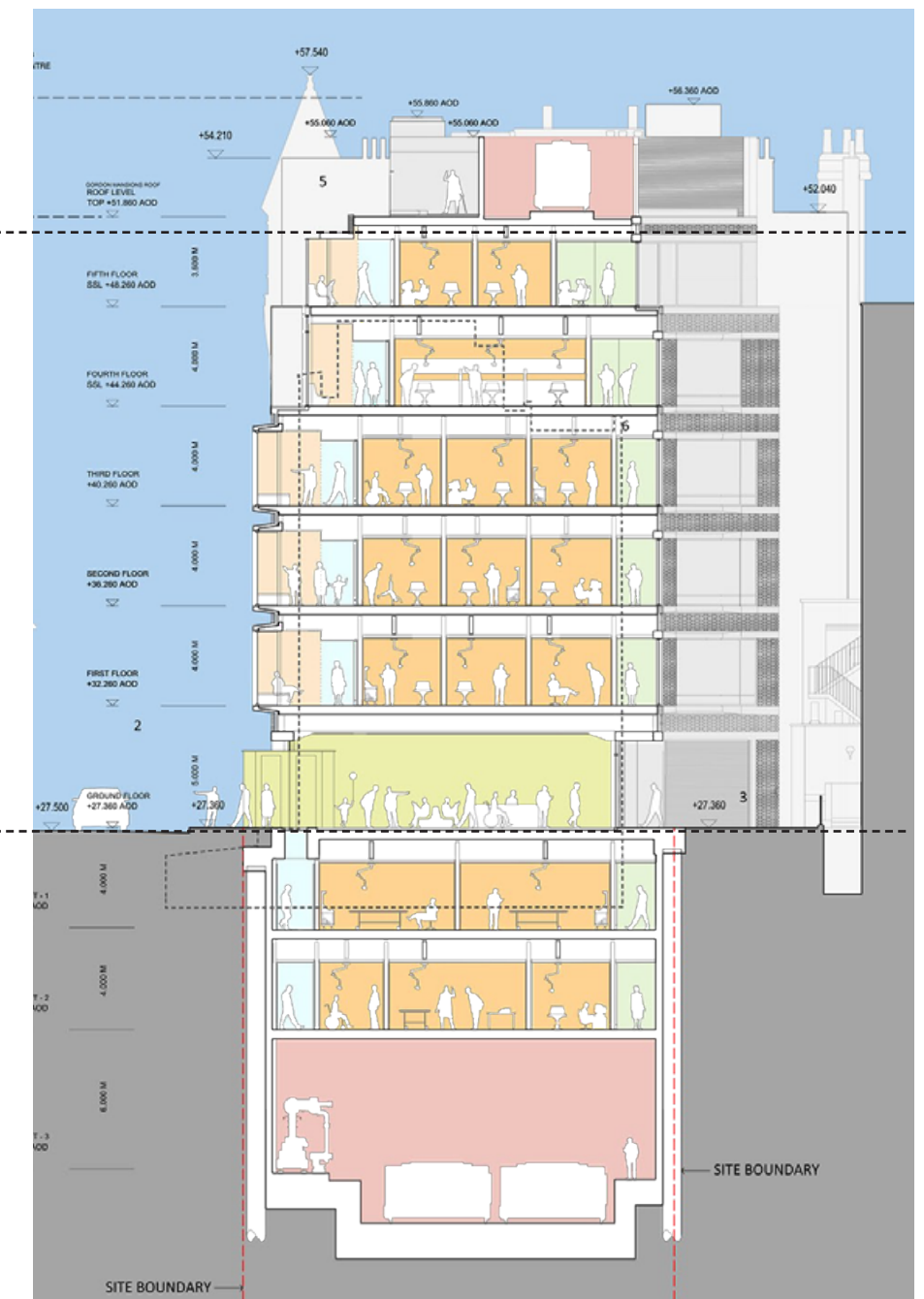
Huntley Street axonometric upview

PLANT

ROOF

BODY

BASE



Cross section

5.0 The Proposal

5.2 Massing



Aerial view from the north-east

Phase 5's massing re-establishes the coherence of the street wall with a building whose tripartite order of 'base', 'body' and 'attic' echoes that of the adjacent Gordon Mansions.

- The base contains public and social spaces including a cafe and waiting areas, whilst its treatment maximises the connection between these functions and surrounding context.
- The body carefully re-establishes a new urban wall and acts as a mediator between two scales, styles and materials.
- The roof has the potential to provide south facing gardens which follows the 45 degree theme throughout.



Huntley Street looking north

5.0 The Proposal
5.3 Elevation Details and Materials

Perforated brick screens enliven the Huntley Street elevation. To the south they screen waiting area bays and to the north they form vertical blades denoting the core.

The building’s design responds to the rich architectural heritage of the local area drawing together neighbours of contrasting architectural detail.

The composition of the Huntley Street elevation balances waiting areas to the south against the Capper Street core to the north. The latter is expressed as a vertical element recalling the corner turret of Gordon Mansions. The main entrance on Huntley Street is framed between these two elements. A clear ground floor lobby offers light and views to Shropshire Place.

The use of rich red handmade brick delivers a high quality,contemporary facade drawing on the inventive brick buildings of earlier epochs characteristic of the area.



Huntley Street elevation

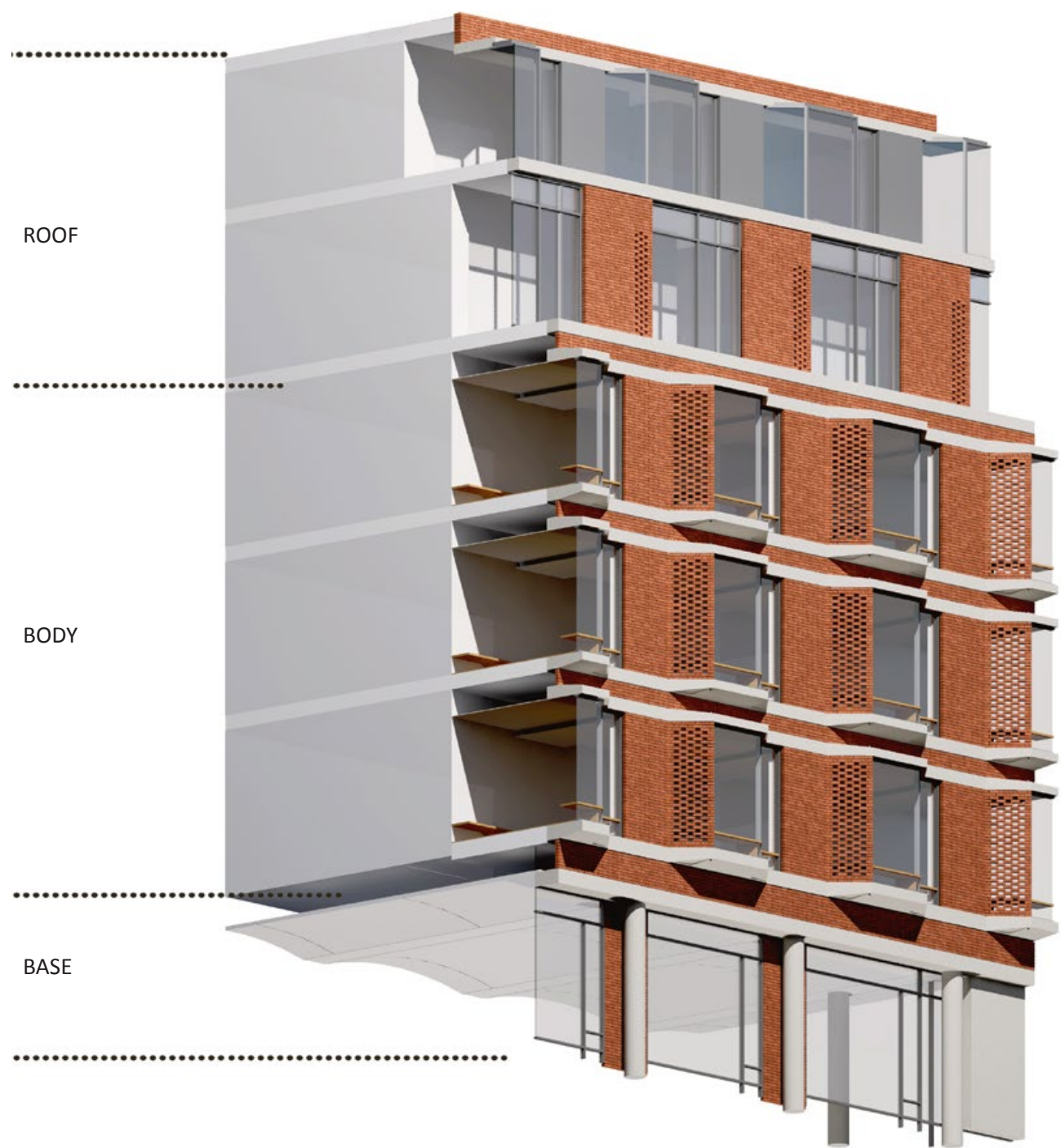
5.0 The Proposal
5.3 Elevation Details and Materials
Huntley Street



Huntley Street looking south

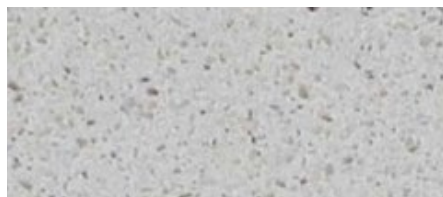


5.0 The Proposal
5.3 Elevation Details and Materials



Huntley Street facade axonometric

High quality reconstituted stone string courses reinterpret a traditional detail to form the structural underpinnings of the proposed facades.



Reconstituted stone

The main body consists of a repeated 3 metre high canted bay window detail, asymmetrically centred to the underlining grid. The bay is set between a double horizontal band expressed on the facade as a reconstituted stone string. The facade is designed to appear more solid when viewed from the residential areas towards the south of Huntley Street. Conversely the elevation is more glazed and inviting, activating the views from the north.



Handmade red brick

The upper level by contrast to the main body consists of light metal panels articulated by full height glazed bays ,maximising easterly views. The removal of the articulated bays at level 4 re-establishes a mansard line recessed behind the FAAP, generating a double height reading over levels 4 and 5 from local views along Huntley Street.

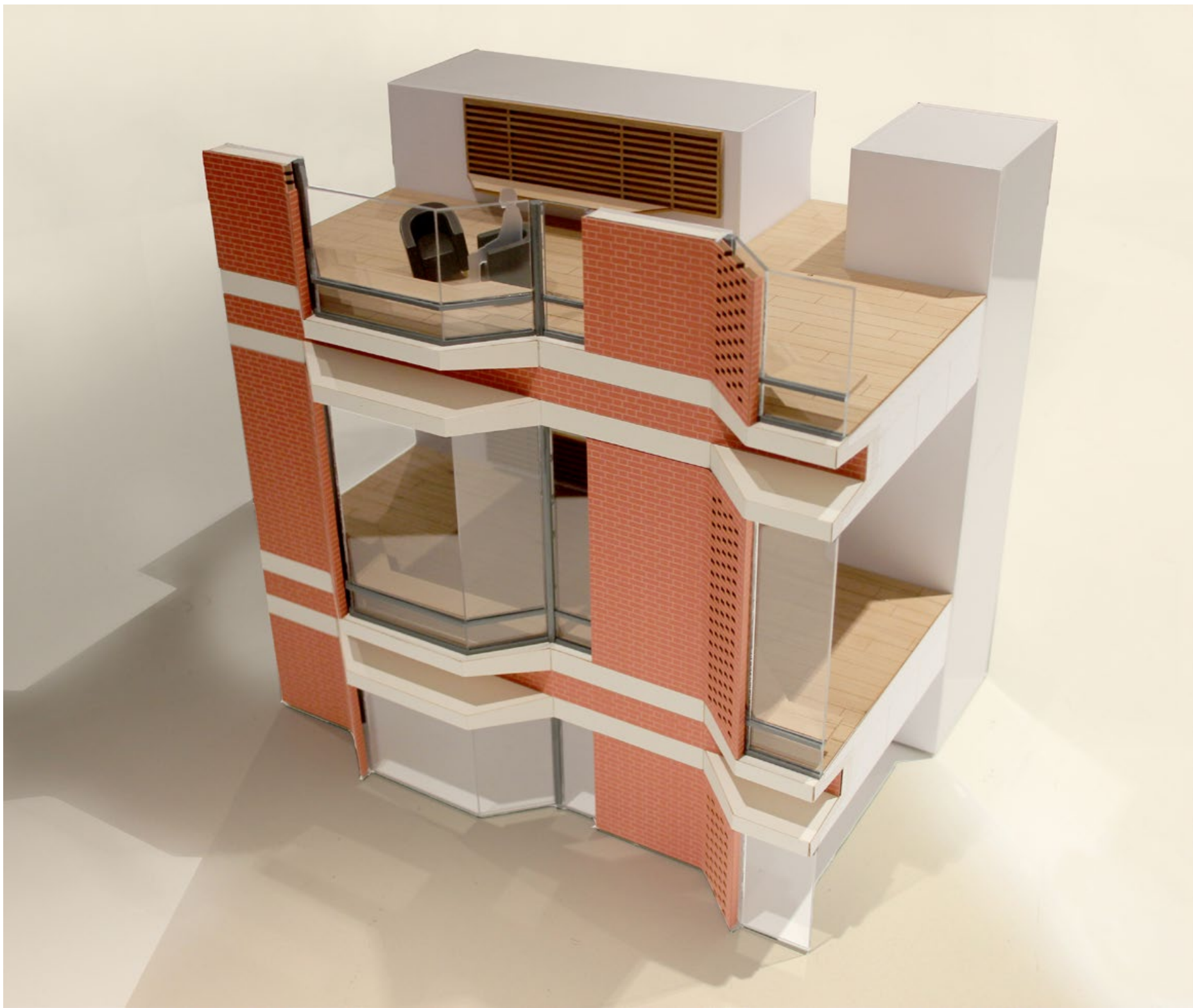
In the longer views the articulated massing of the glazed bays at level 5 come into view celebrating the relationship between the undulating spires and friezes of Gordon Mansions.

The base is carefully considered to ground the building whilst also providing visual links through to Shropshire Place provided by large floor to ceiling glazed units. Additionally the reposition and restoration of the Capper Street crest defines the entrance to a new UCLH outpatient hospital.



Internal bay waiting areas along Huntley Street

5.0 The Proposal
5.3 Elevation Details and Materials



Huntley Street facade study model

The Huntley Street facade bay.

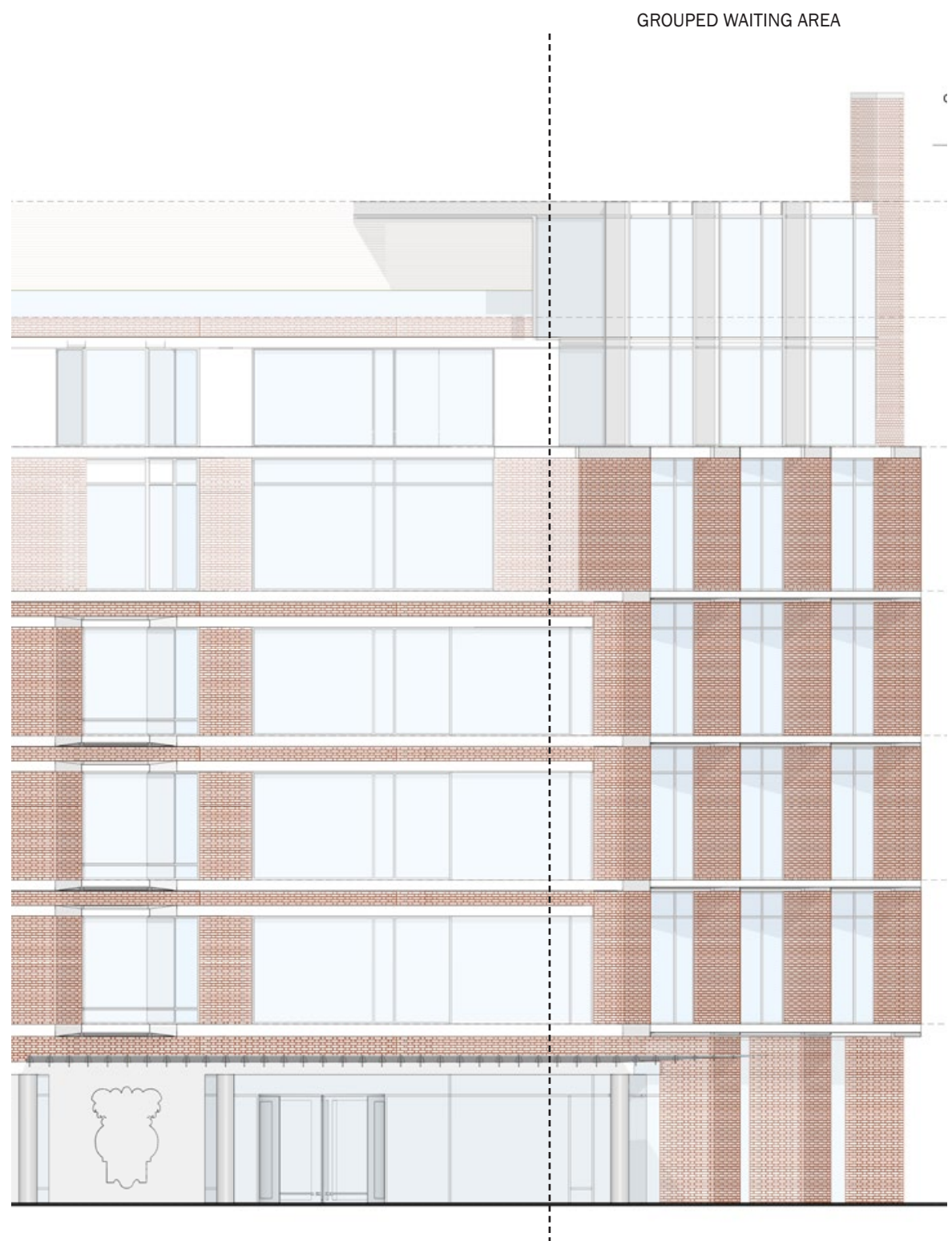
The typical Huntley street canted bay is an expression of the unrealised 1926 scheme. Set on an underlining 5.5 metre grid the bay grows from a solid Flemish bonded brick pier which denotes the position of the clinical circulation space within. This red brick pier delivers the main vertical expression within the scheme.

The brick pier seamlessly peels off the body of the facade to generate a perforated brick screen along the southern edge of the canted bay. The perforated brick acts as both a shading brise soleil element which also generates a dappled rhythm of natural light cast along the main circulation space.

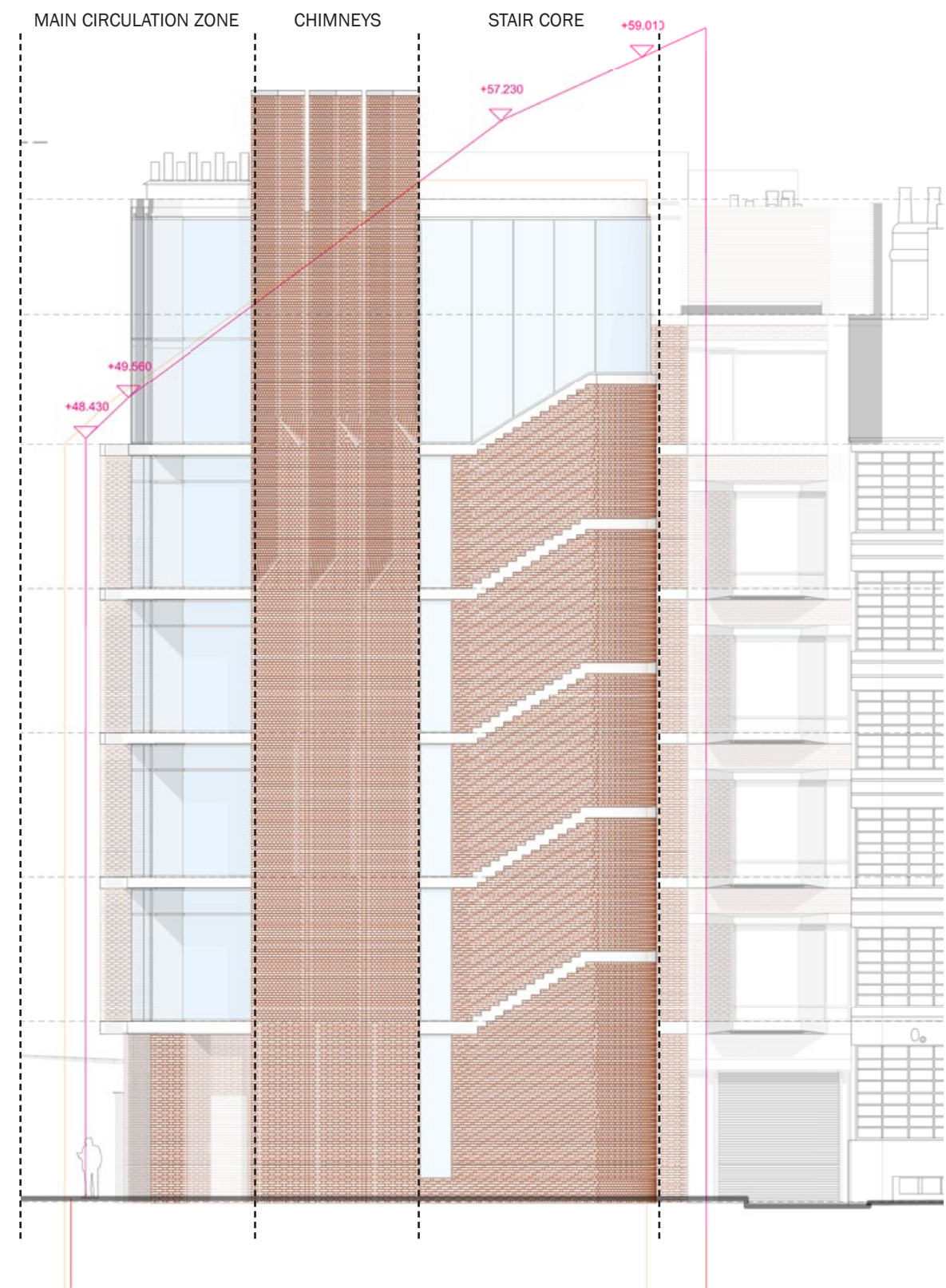
The typical bay terminates against a lancet window defining a smaller bay width which establishes a vertical reading that acts as the mediator between the finer bays on Gordon Mansions and the larger panels of the UCH Macmillan Cancer Centre.

Each individual bay has a built in ‘Z’ shape timber bench that meanders in and out of both bay and waiting area which is expressed horizontally along the facade.

Each typical bay is set between a chamfered reconstituted stone header and footer detail establishing a 3m high bay. This double band is an contemporary expression of the horizontal detailing present in the local Bloomsbury context.



Huntley Street partial elevation - Group waiting bay



Copper Street elevation



Capper Street view looking east

5.0 The Proposal

5.3 Elevation Details and Materials

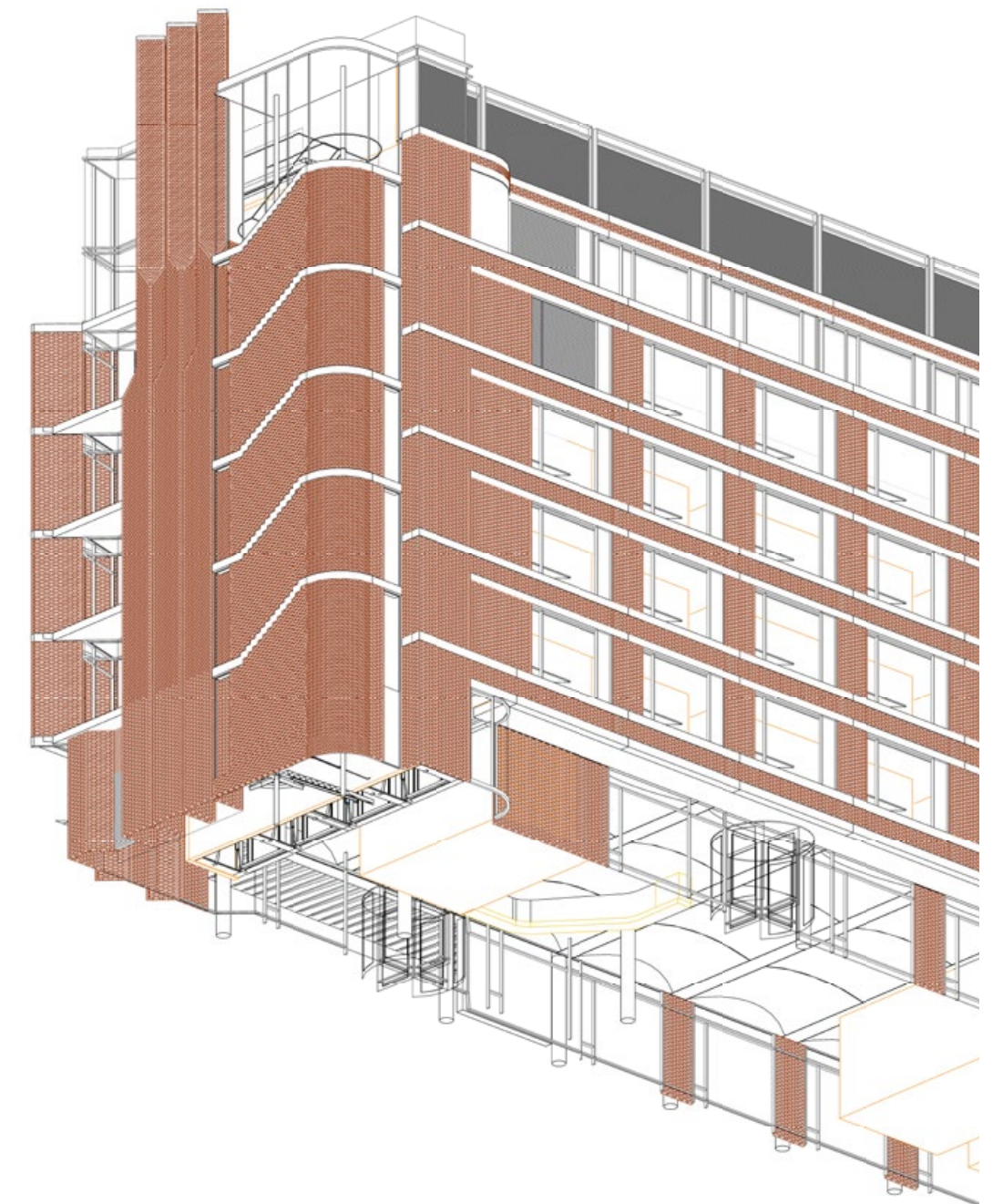
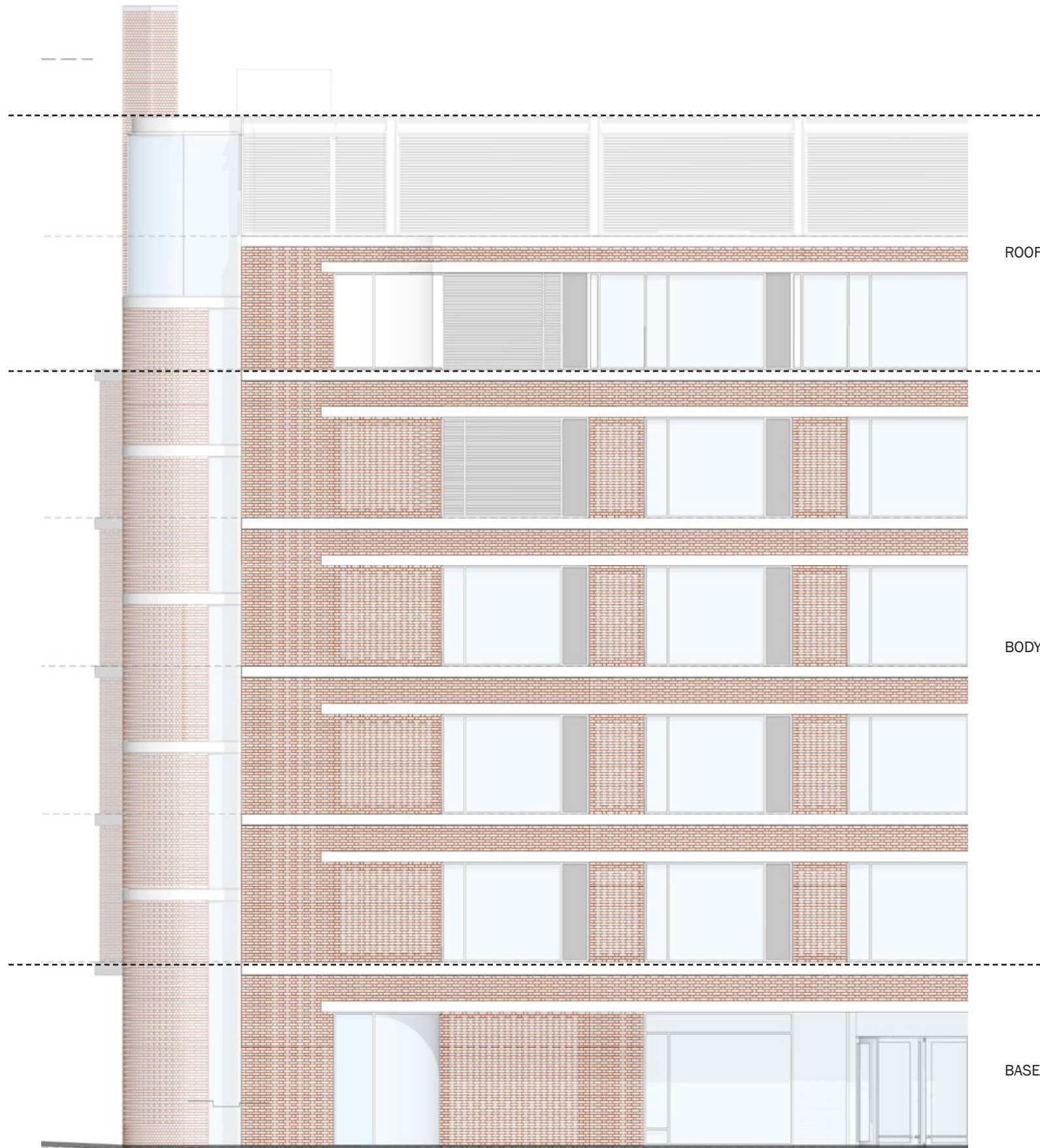
The Capper Street facade.

The predominant Capper Street elevation re-establishes the street line whilst adopting a similar curved relationship with Shropshire house.

The end turret stair core is defined by a textured brick pattern set between the integration of a single white stringer course, expressing the raiser of the internal stair. This brick pattern terminates at level 5 to reveal a glazed lantern, activating the upper levels of the façade and providing a marker at night.

The Capper Street elevation is dominated by a set of three skilfully articulated brick chimneys that reinforce the concept of a hand-crafted high quality arts and craft building. They establish a strong vertical element which acts as a clear marker locating the hospital in long and oblique views whilst also expressing an honest functionality.

The defining corner of Capper and Huntley Street is articulated by full height perforated brick brise soleil screens in front of the group bay areas. The screens follow the 45 degree theme established throughout the scheme, tying together the serrated glazed element behind. The main body of this corner terminates at level 5 to emphasis the predominant verticality of the chimneys. Additionally the Capper Street façade defines a recessed corner glazed element providing linear views down Huntley Street.



Shropshire Place partial elevation

Shropshire Place axonometric upview



Shropshire Place entrance

5.0 The Proposal

5.3 Elevation Details and Materials

Shropshire Place.

The typical tripartite form continues around to Shropshire Place although the main body of the building is defined by an additional level to that of Huntley Street.

The 5th level and plant enclosure are recessed and follow the continuation of a light metal reading on the upper levels.

The main body of the building expresses the serviced functions. The lighter articulation and the presence of the double banding re-established within the façade reveals the clinical circulation at the rear of the building. The double horizontal white banding is more expressive along the Shropshire Place elevation as a result of the lower ceilings within the clinical circulation.

The typical bay reflects a mirrored arrangement to that of Huntley Street. Conversely the solid brick pier transitions to a perforated brick panel allowing for a visual link to Shropshire Place along the internal corridor. Additionally a cleaner metal panel replaces the perforated canted brick bay.

Four canted bays terminate the view down the street generating an external focal point whilst expressing the staff breakout zones within the façade.

Finally the entrance line is recessed at ground to establish a generous defensible space between the road and pavement. Additionally the curved glazed lift lobby establishes an earlier visual connection to the entrance from views along Capper Street.



The building's main entrance on Huntley Street

5.4 Engagement with the Public Realm



The ground floor planning of Phase 5 contributes to the activation of the surrounding public realm. The building's main entrance addresses Huntley Street with a secondary access to Shropshire Place.

The way the building contributes to the local environment has informed the ground floor planning. The social spaces, meeting and dining areas are located at ground floor level, animating the building for passers-by.

The staggered alignment of the entrances on Huntley Street and Shropshire Place establish a new route through reactivating the previously enclosed nature of Shropshire Place.

The heart of the ground floor level is open plan and naturally lit from both sides aiding way-finding and notionally improving permeability across the site.

The main entrance is carefully located, drawn by the eye in longer distance views by the taller end element and fully defined in local views by the repositioning of the stone crest from the Capper Streets original facade.

Ground floor plan