



Demolition of the existing buildings and redevelopment
for a building of 6 storeys in height including ground and 3 storeys basement,
for use a specialist head and neck facility (Class D1)

Former University College London (UCL) Student Union and Royal Ear
Hospital,
Huntley Street, Bloomsbury

Statement of Consultation

February 2015

CONTENTS

1.Executive Summary3

2.Introduction.....5

3.Summary of the Proposals.....6

4.Consultation Activities.....7

5.Consultation Feedback.....12

6.Conclusion.....17

7.Appendices.....18

1 Executive Summary

- 1.1 UCLH (University College London Hospitals NHS Foundation Trust) undertook a thorough public consultation to raise awareness of proposals for a development, which would provide treatment and care of patients with disorders of the ear, nose, throat and mouth. By engaging local residents, staff, patients and local political and community stakeholders, UCLH successfully raised awareness of the proposals and gained feedback on the designs. A total of 212 people attended our two sets of exhibitions, with 30 of them returning feedback forms.

During the consultation the following activities were undertaken:

- Letters were distributed to local political, community and institutional stakeholders in the Bloomsbury area, providing an overview of the proposals and offering a further briefing from the project team.
- Leaflets were distributed to provide an outline of the proposals and to invite people to view the early designs
- Four days of public exhibitions were held in July 2014 to display initial proposals:
 - Monday 7 and Thursday 10 July 2014, 2.30pm to 7.30pm, Former Student Union Building, 43-49 Huntley Street, Bloomsbury, WC1E 6DG
 - Tuesday 8 July 2014, 12pm to 6pm, Royal National Throat, Nose and Ear Hospital, 330 Gray's Inn Road, WC1X 8DA
 - Wednesday 9 July 2014, 12pm to 6pm, Eastman Dental Hospital, 256 Gray's Inn Road, WC1X 8LD
- Further leaflets were distributed to around 4000 local residents on Wednesday 7 January 2015, outlining basic details of the plans and inviting residents to the second round of exhibitions, displaying updated proposals.
- Three meetings have been held between Gordon Mansions Residents Association and members of the project team including the architects and representatives from UCLH. These took place on 12 August 2014 at 7pm, on 11 November 2014 at 7.30pm and at 7pm on Monday 12 February 2015.
- Three further days of public exhibitions were held in 2015 to showcase UCLH's revised proposals:
 - Wednesday 14 January 2015, 2.30pm to 7.30pm, Former Student Union Building, 43-49 Huntley Street, Bloomsbury, WC1E 6DG
 - Thursday 15 January 2015, 2.30pm to 7.30pm, Royal National Throat, Nose and Ear Hospital, 330 Gray's Inn Road, WC1X 8DA
 - Friday 16 January 2015, 1.00pm to 5.30pm, Eastman Dental Hospital, 256 Gray's Inn Road, WC1X 8LD

At which attendees, both staff and local residents, had the opportunity to view and comment on plans, submitting their views via a feedback form on the day or to the freepost address, or to the project email address.

- The project team met with the Bloomsbury Conservation Area Advisory Committee on two occasions prior to submission. The first meeting was held on 3 July 2014 at 1pm and the second meeting was on Wednesday 11 February at 1pm.

- A meeting with Cllr Rishi Madlani, ward member for Bloomsbury, took place on Monday 2nd February, where several UCLH projects were discussed, including this proposal.

1.2 Those who attended the exhibitions were generally supportive of the plans to consolidate and streamline services on one site, and were generally positive about the building's proposed façade. Some neighbouring residents had concerns about the height of the proposed building, which would be greater than the buildings currently on site

2 Introduction

- 2.1 UCLH is proposing a new centre for diagnosis, treatment and care of disorders of the ear, nose, throat and mouth at 43-49 Huntley Street.
- 2.2 The dispersed nature of current ear, nose, throat and mouth services across North London makes it difficult to provide the streamlined level of care that would further enhance both the patient and staff experience. Centralising our services in a new modern building would ensure that UCLH continues to provide world-leading healthcare.
- 2.3 In addition to the need to modernise the services provided at the Royal National Throat, Nose and Ear Hospital (RNTNEH) and the Eastman Dental Hospital (EDH), the lease at the RNTNEH will shortly be expiring which means that there is an urgent need to relocate the services currently provided there. Moreover, the cost of refurbishing a listed building of the scale of the EDH would require significant preservation works and would therefore be prohibitively expensive.
- 2.4 As part of the application process UCLH conducted a thorough programme of public consultation, engaging local residents, staff and patients as well as political and community stakeholders. The project team also presented to the London Borough of Camden's Development Management Forum on Monday 6th November 2014.
- 2.5 This document provides an overview of the consultation, engagement and communications activity undertaken by UCLH in support of the application.

3 Summary of the Proposals

- 3.1 The new clinical facility will consist of six storeys above ground and three storeys below ground. This space will incorporate all clinical services currently provided across the RNTNEH and the EDH, in addition to all necessary plant and some laboratory space.
- 3.2 The site is well located, close to other UCLH medical services, including the main University College Hospital, University College Hospital Macmillan Cancer Centre, and the new clinical facilities planned for the former Rosenheim site on the corner of Grafton Way and Huntley Street, which will include a new Proton Beam Therapy cancer treatment centre. The new facility would also be close to The Cotton Rooms, UCLH's new patient hotel, opened in 2012, which offers free accommodation to patients and close relatives.
- 3.3 This proposed facility will be linked to other nearby UCLH facilities through existing underground tunnel networks, which currently provide servicing required by UCLH.



4 Consultation Activities

4.1 This section sets out the consultation undertaken by the project team in support of the application, and engagement with the local community and stakeholders.

4.2 Consultation Aims

4.2.1 The aims of the consultation were:

- To raise awareness of the proposals for the site and the relocation of services within the local community, as well as with UCLH's patients and staff.
- To engage neighbouring residents and other local stakeholders in the area to ensure they had the opportunity to give feedback on the design of the proposed new building.

4.2.2 The Localism Act 2011

The Localism Act 2011 includes three key duties to consult for developers of large projects. These reflect the Coalition Government's localism agenda and its commitment to devolving decision-making to a neighbourhood and local authority level. These are:

- Genuine consultation. Developers must consult in a meaningful and open way with stakeholders and the community around proposals for development.
- Responsive consultation. Developers must give real consideration to a consultation's feedback and use it to influence the development of designs, or be able to explain why it has not been incorporated into designs.
- Demonstrable consultation. The Act supports the submission of a Statement of Consultation, which documents and demonstrates the consultation process and its influence on design.

In recognition of this legislation and of the community-focused agenda it codifies, UCLH has conducted a thorough and open consultation for the proposals.

4.3 Consultation Overview

- 4.3.1 UCLH undertook a comprehensive consultation that centred around two phases of public exhibitions in July 2014 and January 2015. Local political and community stakeholders were invited to each exhibition and kept updated on the progress of the application at each stage of the consultation. Prior to each exhibition, 4000 leaflets were distributed to local residents and businesses, inviting them to attend.
- 4.3.2 The first round of public exhibitions took place on Monday 7 and Thursday 10 July 2014, (2.30pm to 7.30pm at the Former Student Union Building), Tuesday 8 July 2014, (12pm to 6pm at the Royal National Throat, Nose and Ear Hospital) and Wednesday 9 July 2014 (12pm to 6pm at the Eastman Dental Hospital). The exhibition outlined the initial proposals and designs for the centralisation of services to Huntley Street.
- 4.3.3 The second round of exhibitions took place on Wednesday 14 January 2015 (2.30pm until 7.30pm at the former Students Union building), Thursday 15 January 2015 (2.30pm until 7.30pm at the Royal National Throat, Nose and Ear Hospital), and on Friday 16 January 2015 (1.00pm until 5.30pm at the Eastman Dental Hospital). The exhibition provided greater detail on the proposed new clinical facility, incorporating local feedback from the first public exhibition, and included detailed indicative images and floor plans for the building.
- 4.3.4 In total 212 people attended the exhibitions and a total of 30 feedback forms were returned. Attendees included neighbouring residents, the Chair of the Gordon Mansions Residents Association and the Head of the Institute from the Eastman Dental Hospital.
- 4.3.5 Key political and community stakeholders were also offered an individual briefing on the proposals in addition to an invite to the exhibition. Members of the project team met with Gordon Mansions Residents Association on three separate occasions to keep them updated on the plans; the chair of the association engages in regular dialogue with the team. Additionally the team has twice met with the Bloomsbury Conservation Area Advisory Committee to discuss the plans.
- 4.3.6 Members of the development team also attended a Development Management Forum meeting on Monday 6th November 2014. All Development Control Committee members and Bloomsbury ward members were invited to the briefing. The forum was well attended by councillors and provided a useful opportunity for members of the development team to answer questions and provide an introduction to the scheme.
- 4.3.7 The public exhibitions enabled local residents to view the proposals and meet the development team, offering them the chance to ask questions and provide feedback. This feedback was then collated and analysed by the development team.

4.4 Political and Community Stakeholders

- 4.4.1 Letters introducing the proposals and the programme of consultation were distributed to local political and community stakeholders. All correspondence included contact details for the project team.
- 4.4.2 Further letters and leaflets were sent out to community and political stakeholders ahead of each public exhibition. Following the exhibition, those who had requested to be kept updated were sent follow up emails including copies of the exhibition boards and indicative plans.
- 4.4.3 Political and community stakeholders contacted by letter included:
- Leader of Camden Council, Cllr Sarah Hayward
 - Deputy Leader of the Council and Cabinet Member for Health and Adult Social Care, Cllr Pat Callaghan
 - Cabinet Member for Regeneration, Cllr Phil Jones
 - Ward members for Bloomsbury – Cllr Adam Harrison, Cllr Rishi Madlani and Cllr Sabrina Francis
 - Members of the Development Control Committee
 - Members of the Health Scrutiny Committee
 - Mr. Frank Dobson MP, Member of Parliament for Holborn and St Pancras
 - Mr. Andrew Dismore AM, London Assembly Member for Barnet and Camden
 - Mr. Mike More, Chief Executive of Westminster City Council
 - The Charlotte Street Association
 - Gordon Mansions Residents Association
 - Bloomsbury Conservation Area Advisory Committee
- 4.4.4 UCLH met with Cllr Rishi Madlani, ward member for Bloomsbury, on 2 February 2014 to discuss UCLH's upcoming projects and estate. This included a discussion about this development, and the steps taken to engage neighbouring residents. Copies of the presentation were provided for Cllr Sabrina Francis and Cllr Adam Harrison, who were unable to attend.
- 4.4.5 The development team will hold further meetings with Gordon Mansions Residents Association to discuss height and establish the likely impact on daylight for neighbouring residents.

4.5 Publicity

- 4.5.1 To further advertise the public exhibitions, UCLH's website was updated with information about the events and a summary of the proposals.

4.6 Public Exhibitions

- 4.6.1 A public exhibition was held on Monday 7 and Thursday 10 July 2014, (2.30pm to 7.30pm at the Former Student Union Building), Tuesday 8 July 2014, (12pm to 6pm at the Royal National Throat, Nose and Ear Hospital) and Wednesday 9 July 2014 (12pm to 6pm at the Eastman Dental Hospital). A total of 131 people visited the exhibition and 24 feedback forms were returned.
- 4.6.2 A second round of public exhibitions took place on Wednesday 14 January 2015 (2.30pm until 7.30pm at the former Students Union building), Thursday 15 January 2015 (2.30pm until 7.30pm at the Royal National Throat, Nose and Ear Hospital), and on Friday 16 January 2015 (1.00pm until 5.30pm at the Eastman Dental Hospital). The exhibition provided greater detail on the proposed new clinical facility, including detailed indicative images and floor plans for the building. The exhibition featured boards providing more detail on the scheme, with detailed indicative images and floor plans for the building. Feedback forms were also available and members of the development team were on hand to answer any questions. Over 70 people visited the exhibition and a total of 6 feedback forms were returned.
- 4.6.3 At the exhibitions, the development team was on hand to answer questions and explain the finer details of the plans. The team included:
- UCLH – Mr Robert Bexson
 - UCLH – Ms Emily Treder
 - UCLH – Ms Nancy Silva
 - UCLH – Mr David Probert
 - UCLH – Ms Johanna Moss
 - Steffian Bradley Architects – Mr Paul Treacey
 - Steffian Bradley Architects – Mrs Kristina Richter Adamson
 - Jones Lang Lasalle – Ms Sarah Roe
 - Jones Lang Lasalle – Ms Emily Cochrane
 - Arup – Mr Graham Hennessey
 - Local Dialogue – Mr Peter Elms
 - Local Dialogue – Mr James McEwan
 - Local Dialogue – Ms Ellie Naismith
 - Riley Consulting – Ms Donna Simmons
 - Riley Consulting – Mr Gerard Chaustow
- 4.6.4 On arrival, people were asked to sign-in and leave their contact details. This allowed the project team to keep them updated on the proposals if they chose. Having viewed the proposals, they were then asked if they would like to complete a feedback form. Attendees could either complete the form at the exhibition or return it using the freepost address provided.
- 4.6.5 In total 212 people attended both sets of exhibitions and a total of 30 feedback forms were returned. Attendees included neighbouring residents of Gordon Mansions, the Chair of the Gordon Mansions Residents Association and the head of the Eastman Dental Institute.

4.7 Meetings with Community Groups

4.7.1 Gordon Mansions: As the residents living in close proximity to the proposed site, the project team established early lines of communication with the group. The project team met with the group a total of three times, on 12 August 2014 at 7pm, on 11 November 2014 at 7.30pm and at 7pm on Monday 12 February 2015. The project team was keen to ensure that the residents of Gordon Mansions were kept up to date with any changes in the scheme, and to this end the group were regularly provided with updated scheme drawings.

4.7.2 Throughout our consultation and ongoing engagement with the residents of Gordon Mansions, a number of issues were raised by the group and individual residents. The main issues raised were the following:

- The height of the building, with some members of the association concerned that the height of the proposed new building would reduce the daylight that they currently enjoy.
- A concern was expressed that the new development would create noise that would have a negative impact on the living standards currently enjoyed by residents.
- Many residents dislike the parking arrangements currently employed by the Patient Transport Service Vehicles (PTS) that park on Huntley Street. The project team offered residents assurance that as part of the new proposals the ambulances would no longer park on Huntley Street.
- The residents provided mixed feedback on the design of the scheme, with most feeling that it was in keeping with the conservation area, but some others feeling that it was not.
- Residents' feedback was mixed on the matter of the retention of the Capper Street façade.
- Concerns were expressed with regard to the location of the elevator shafts; as a result the project team have relocated these within the building to mitigate any noise impact they might have on neighbouring Gordon Mansions Residents.

4.7.3 Bloomsbury Conservation Area Advisory Committee (BCAAC): The project team met with BCAAC on two occasions to discuss with them our design concept, and how the building is designed to reflect and enhance the conservation area. The first meeting occurred on 3 July 2014 at 1pm and the second meeting on Wednesday 11 January at 1pm. The group were given the opportunity to view models and power point presentations reflecting the evolution of the design of the proposed building. The main issues raised by the group were the following:

- Concerns were expressed as to the height of the proposed development
- Representatives of the committee were disappointed at the decision not to retain the Capper Street façade
- General criticism was made of the design of the building, although the group were reluctant to give detailed critique, they were simply 'unhappy'.

5 Consultation Feedback

5.1 July 2014 Exhibitions

- 5.1.1 Feedback at these exhibitions was generally supportive of the principle of redeveloping the site and the concept of relocating services for the treatment and care for patients with disorders of the ear, nose, throat and mouth into a new building.
- 5.1.2 Although feedback from residents on the proposed design was mixed, it was generally more positive than negative, with most exhibition attendees sharing a desire for the current buildings to be replaced.
- 5.1.3 Some residents expressed concerns about issues such as the potential increase in noise (particularly through party walls), increases in traffic, disruption from rooftop plant and the increase in height to five storeys from the current buildings' three/four storeys.
- 5.1.4 Residents were mainly concerned about the potential increase in noise and height on what is currently an inactive site. UCLH staff were mainly concerned with service moves and timescales, with the design of the proposed building generally proving popular.

5.2 January 2015 Exhibitions

- 5.2.1 Ahead of the second round of exhibitions, proposals were updated to reflect feedback from the community, and plans were drawn more specifically. Additionally, the building was given a new façade.
- 5.2.2 Around 60 people attended this exhibition. Most attendees were pleased to see that the plans had incorporated local feedback and verbal feedback about the new façade was generally positive. We received 6 feedback forms.
- 5.2.3 Verbal feedback showed that the design was popular; especially the façade that now responds to the surround environment and character, such as neighbouring Gordon Mansions.
- 5.2.4 Feedback at this exhibition was largely supportive, but concerns expressed on this occasion focused largely on clinical matters such as the location of teaching facilities.



JULY 2014 FEEDBACK	
<i>What are your initial thoughts about the proposals?</i>	<i>Any other comments</i>
Noise transference through walls, previously taken legal action	Need sound proofing. Concern about increase in vehicles.
Better than current facilities. Concern about height restrictions. Unsatisfactory basement clinical areas.	Positive move to integrate ENT services, importance of maintaining the roof garden
Should make the roof gardens accessible to Gordon Mansions residents. Rooms should be accessible for Gordon Mansions RA meetings.	
Concern about height, sounds, light, and traffic.	Need a website
Good proportions - an asset.	Good luck.
Delighted. Totally supportive.	Local residents automatically object to anything the hospital proposes.
No radiotherapy or IP surgery on site.	Inadequate parking for elderly/ambulances/service vehicles, especially in view of the West End Plan.
Good location - overplayed link between ENT/head/neck (10% of dental patients need ENT)	How many floors are dental? Needs labs. Teaching must be co-located.
Much to admire about this. Concern about space for dental.	
Good, well designed, good size. Well used light for underground areas.	

Good idea to centralise.	Lost identity of EDH.
Concern about lost identity of EDH. Lots of good information from the team.	
Centralising services will benefit patients	Lost identity of EDH.
The name of the new hospital needs further discussion	
What will happen to provision of private services?	
Failure to acknowledge dental in the title will prohibit opportunity to build on international renown.	
Positive for patients. Organisation of staff needs careful planning.	
Good location, interesting proposal.	
Good idea to bring ENT services closer to UCLH	
Good to integrate RNTNE with other UCLH services.	EDH/RNTNE play a key role in research, much collaboration.
Very interesting; good roof garden	
Good to move close to main campus - current site feels forgotten	Need for input from all groups.
	Well presented
	All questions answered, presenters friendly and approachable
Supportive. Need to consider other projects in the area, e.g. the West End project; consider pedestrianising.	

JANUARY 2015 FEEDBACK	
<i>What are your thoughts about the updated proposals?</i>	<i>Any other comments</i>
	Gap between proposed facility and the Lazari Investments property: would it be possible to fill this gap to defend residents against preventable noise?
Good to provide a new use for these old buildings	Concern about light.
Interesting, but small footprint and concern about disintegrated delivery of teaching and practice.	
Will enable patient services to be more concentrated	Patients need to be involved in the development process
Building too small. Concern for post-grad programs.	Need to integrate clinical teaching and lab facilities. Need access to lecture theatres.
Keen to work on supply of clinical furniture. Very impressed with proposals.	Very willing to work on this project.

6 Conclusion

- 6.1 The public consultation was successful in raising awareness within the local community of the proposals for a new clinical facility at 43-49 Huntley Street, on the site of the former student union building and the former Royal Ear Hospital. The development team was able to gain an understanding of neighbouring residents' views on the proposed design as well as staff, patients and the wider community. It also allowed stakeholders an opportunity to offer feedback on the plans, which was fed into the proposals.
- 6.2 The public exhibitions attracted 212 local residents, patients and staff to view the proposals.
- 6.3 A total of 30 feedback forms were returned at the exhibition and the majority of verbal and written responses showed that local residents, staff and patients were supportive of the plans.
- 6.4 There was some concern expressed by residents of neighbouring Gordon Mansions about the height of the proposed building, as it is an increase from the Students Union building. There was also a concern that the new building would create an increase in noise, they have requested that the hospital work to mitigate extraneous noise by communicating with the community.
- 6.5 In direct response to concerns expressed during the pre-application consultation phase and after conversations with council officers, residents, local politicians and residents' associations, the proposals have been amended to address two important issues highlighted by residents. The façade of the building is now reflective of its context, and the lift shaft has been moved away from Gordon Mansions.
- 6.6 UCLH will continue to engage with stakeholders after the submission of our planning application and in advance of any construction at the site.

7 Appendices

Appendix 1 – Leaflet to local community advertising July 2014 exhibition

Appendix 2 – July 2014 exhibition boards

Appendix 3 – Leaflet to local community advertising January 2015 exhibition

Appendix 4 – January 2015 exhibition boards

Appendix 5 – Feedback forms July 2014

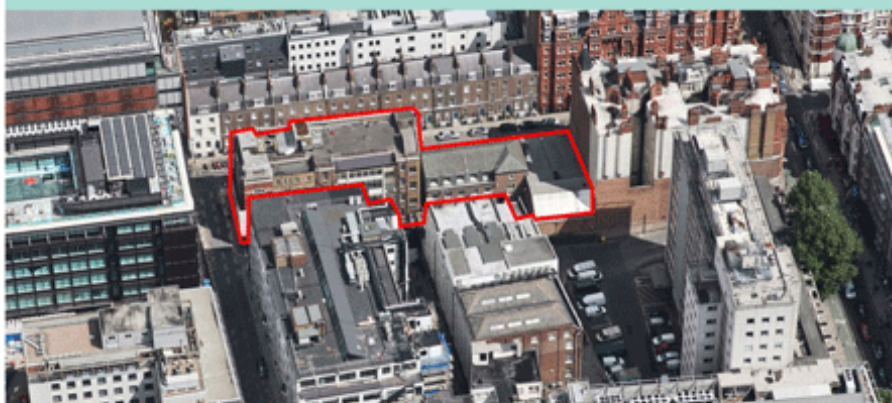
Appendix 6 – Feedback forms January 2015

Appendix 1– Leaflet to local community advertising July 2014 exhibition

University College London Hospitals **NHS**
NHS Foundation Trust

Exhibition invite

Please come along to our exhibition to see our plans for a world leading centre



UCLH (University College London Hospital NHS Foundation Trust) is proposing to develop a world leading centre for the diagnosis, treatment and care of ear, nose, dental, throat and oral diseases in adults and children.

The proposed location for the new centre is the current site of the Royal Ear Hospital (REH) and former Students' Union (SU), on the eastern end of Huntley Street, adjacent to Capper Street.

The new centre will transform the way that UCLH cares for its patients by providing multidisciplinary treatment under one roof and within a modern and efficient environment.

Public Exhibitions

- **Monday 7 July 2014**
- **Thursday 10 July 2014**
2.30pm to 7.30pm
- **Tuesday 8 July 2014**
- **Wednesday 9 July 2014**
12pm to 6pm

uclh

Public Exhibition

UCLH's proposals are for a world leading centre that is set to transform the way that the diagnosis, treatment and care of ear, nose, dental, throat and oral diseases is provided.

At present, UCLH provides these services across a number of different sites that vary in age and condition. Our proposals will improve the care that we are able to provide for patients by consolidating our expertise into a single building.

Please come along to our exhibition and meet the team, view our proposals and have your say.

Monday 7 July 2014

and

Thursday 10 July 2014

2.30pm to 7.30pm

UCLH Student Union
43-49 Huntley Street
Bloomsbury WC1E 6DG

Tuesday 8 July 2014

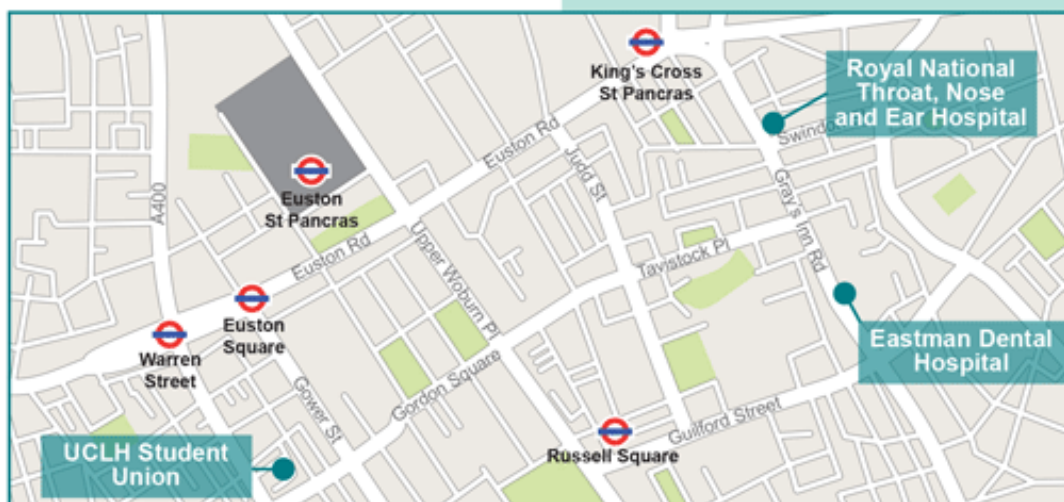
12pm to 6pm

Royal National Throat,
Nose and Ear Hospital
330 Gray's Inn Road
WC1X 8DA

Wednesday 9 July 2014

12pm to 6pm

Eastman Dental Hospital
256 Gray's Inn Road
WC1X 8LD



Contact Us

If you have any questions or would like to know more about our proposals, please get in touch.

T 020 3447 4477 **E information.development@uclh.nhs.uk**

Appendix 2– July 2014 exhibition boards

University College London Hospitals **NHS**
NHS Foundation Trust

World leading centre for
ear, nose, throat and oral
diseases

High quality patient care



Design at an early stage, image for indicative purposes only

Welcome to the first public exhibition about our plans to develop a world leading centre for the diagnosis and treatment of ear, nose, throat and oral diseases in adults and children.

The new building, located on Huntley Street, would enable UCLH (University College London Hospitals NHS Foundation Trust) to transform the way these conditions are diagnosed, treated and cared for by providing a centre of excellence on a single site in a central, accessible location.

The proposals will build on UCLH's programme to improve patient outcomes and the patient experience by ensuring our services operate from modern, efficient, purpose built facilities.

The purpose of today's exhibition is to:

- Display our early plans and concept designs.
- Explain the rationale and need for the proposed development.
- Provide our neighbours, patients, staff and members of the local community with an opportunity to meet the team and have their say.

Have your say!

Your views are important to us. Please do take the time to fill in one of our feedback forms and post it in the comment box provided. We will be reviewing all responses as we work up our plans over the coming months and will be back in touch again later in the year to present our updated designs and proposals.

uclh

World leading centre for ear, nose, throat and oral diseases

Better together



Map highlighting distance of current services from each other

We are better when we work closer together

At present, UCLH treats ear, nose, dental, throat and oral diseases and head and neck cancers across a number of dispersed locations and facilities in the Bloomsbury area. These include:

- The Eastman Dental Hospital (EDH).
- The Royal National Throat, Nose and Ear Hospital (RNTNEH).
- Queen Square.
- University College Hospital.

Why bring the services together?

These services would benefit from a shared, purpose built, modern centre, bringing together their collective expertise.

The EDH and RNTNEH are remote from the main UCLH campus, and are in need of significant investment in order to continue to deliver the highest quality patient care and experience.

This situation – ageing hospitals located away from each other – means that patients are treated in multiple buildings, sometimes miles from each other, and by largely separate clinical teams. This is leading to a duplication of facilities across the four sites and preventing clinicians being able to work efficiently together.

Due to a number of site-specific constraints, which include time limited lease agreements, and the current configuration of the two sites, it has not been possible to radically transform existing services.

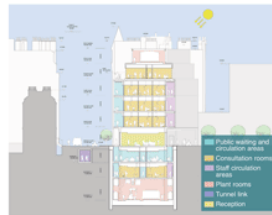
There is now an opportunity to build a world leading centre, in line with UCLH's strategy to deliver the most efficient services to benefit our patient community.

World leading centre for ear, nose, throat and oral diseases

Our proposals

A world leading centre of excellence

Our proposed facility is located on Huntley Street, at the site of the Royal Ear Hospital and the former Students' Union. It will transform the treatment of ear, nose, dental, throat and oral diseases and will become internationally renowned as a hub of clinical expertise in the management and treatment of complex conditions.



Concept cross section B-B

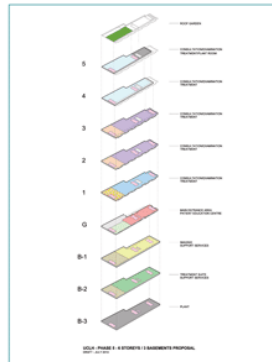
Key features of the proposals

The new centre will enable UCLH to co-locate a broad range of services and specialists under one roof and in a modern multidisciplinary environment.

The building features a new central foyer and atrium at its mid-point, positioned to provide the opportunity to link with Tottenham Court Road.

Key features of the proposals include:

- A 'one stop shop' model, wherever possible for the provision of treatment, diagnosis and care of head and neck services
- Transformation of the Royal Ear Hospital and Student Union into a single building on Huntley Street
- Six floors above and three basement levels below ground
- A stepped approach to the upper floor levels to ensure that visual impact is reduced at street level.
- Access, through the hospital underground street network, to other key services, including pharmacy, sterile services and imaging services



Concept stacking diagram illustrating key clinical zones

World leading centre for ear, nose, throat and oral diseases

The benefits



Aerial view of the current site

What are the benefits?

By building a new centre of excellence and co-locating our services, UCLH will deliver a number of clinical, patient and staff related benefits, including:

- Continued provision of top quality patient care
- Improvements to the patient experience
- One stop clinics which reduce the need for unnecessary multiple appointment attendances
- Increased collaboration between clinical teams and an environment where innovation can thrive
- A modern efficient purpose designed building

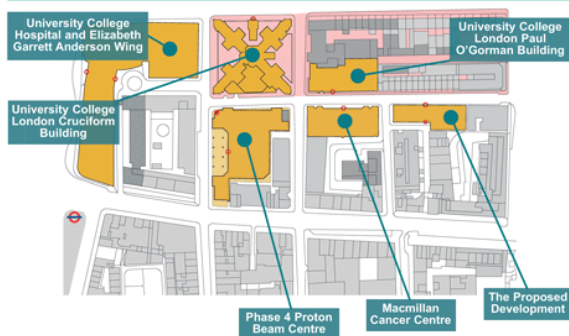


Concept cross section A-A

uclh

World leading centre for ear, nose, throat and oral diseases

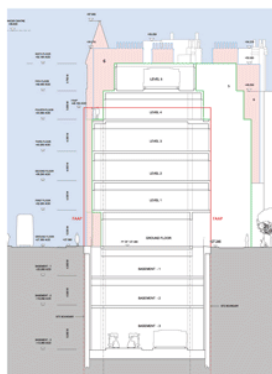
Planning policy



Site plan including conservation area

It is important to UCLH that our proposed centre fits in well with the character of the local area and our neighbours.

Our emerging design takes into account relevant planning policy including the Fitzrovia Conservation Area and Fitzrovia Area Action Plan (FAAP).



FAAP massing envelope overlay with building façade and setbacks

World leading centre for ear, nose, throat and oral diseases

Designing the new facility



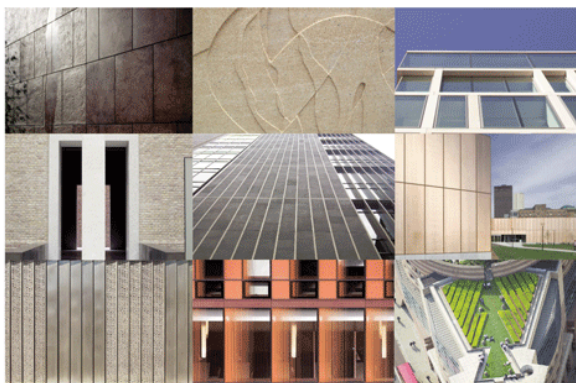
Design at an early stage, image for indicative purposes only

The architectural concept for the new world leading centre proposes a transparent façade at ground level along Huntley Street to animate the street edge and to remove some of the 'mystery' of what takes place inside the building.

UCLH has appointed Steffian Bradley Architects (SBA) to design the new centre. SBA is a specialist architectural practice with significant expertise in designing important new healthcare facilities across the world.

We are at an early stage in the design process

We are currently working closely with Camden Council, the local community and our staff to develop our designs for the new world leading head and neck centre. Our designs are at an early stage, and we are keen to hear your thoughts.



Indicative design influence examples

uclh

World leading centre for ear, nose, throat and oral diseases

Our construction works



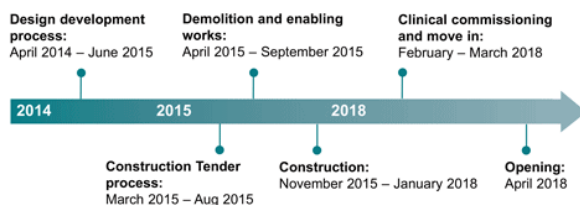
Design at an early stage, image for indicative purposes only

If our proposals are successful, UCLH hopes to begin construction work on its proposed new facility in Spring 2015.

We anticipate that the construction process would be completed by early 2018.

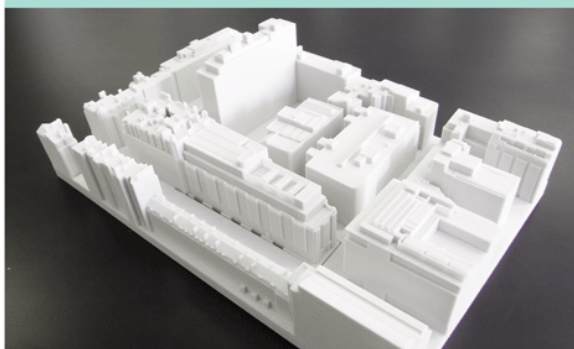
Throughout this process, UCLH will work to reduce all impacts wherever possible. We will use an experienced team of contractors, who will implement a carefully planned programme designed to minimise disruption.

We will also keep you up to date on the progress of our plans for the site.



World leading centre for ear, nose, throat and oral diseases

Next steps



Concept urban realm masterplan

Following our exhibition, UCLH will work to evolve our plans for the site using the feedback that we receive.

After the summer, we will be holding a second set of exhibitions to show you how our plans are developing. Ahead of this, we will provide you with information on where and how you can see our revised plans.

Having further developed our plans, UCLH aims to submit a planning application in Autumn 2014.

Once submitted, Camden Council will review our proposals and decide our application. We hope to begin working to deliver our new building in Spring 2015, opening the hospital for patients in 2018.

World leading centre for
ear, nose, throat and oral
diseases

Thank you



Indicative urban plan

Thank you for attending our exhibition for a world leading centre for the diagnosis and treatment of ear, nose, throat and oral diseases in adults and children.

We will keep you informed about the next steps for our engagement.

We would be delighted to hear your views on the proposals so far. Please post your feedback forms into the ballot box or return them later by taking a Freepost envelope.

If you have any questions about the proposals please contact us at:

T: 020 3447 4477

E: information.development@uclh.nhs.co.uk

P: UCLH Phase 5 Consultation,
FREEPOST,
NAT3717,
London SE1 2BR

uclh

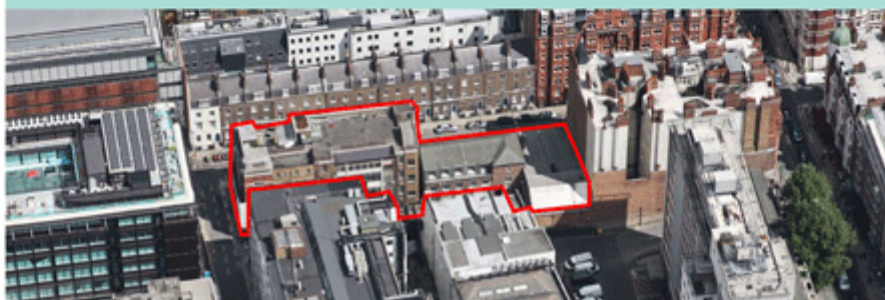
Appendix 3– Leaflet to the local community advertising the January 2015 exhibition

University College London Hospitals **NHS**
NHS Foundation Trust

uclh

Building Better Health Services

A new centre for services currently provided at the Royal National Throat, Nose & Ear Hospital and the Eastman Dental Hospital



UCLH plans to build a new centre which will be a world leader in the diagnosis, treatment and care of patients with disorders of the ear, nose, throat and mouth – including dental, hearing, speech and balance.

It will provide a new home for services currently provided at the Royal National Throat, Nose & Ear Hospital and the Eastman Dental Hospital and will set new standards in patient outcomes and quality of experience thanks to the combined expertise of two leading specialist hospitals. The new building would be on the site of the former Ear Hospital and Student Union building on Huntley Street.

We have updated our plans since our exhibition in July 2014, and we would like to invite you to see our proposals at our exhibitions in January 2015.

What are we proposing?

We are proposing to create one facility by doing the following:

- Demolishing the Royal Ear Hospital and Student Union buildings on Huntley Street
- Constructing a single building on Huntley Street
- Combining services provided across different locations in the new building
- Creating access to other key UCLH services through the close proximity to other hospital sites

Why now?

Currently, UCLH treats disorders of the ear, nose, dental, throat and mouth, across a number of sites including the Royal National Throat, Nose and Ear Hospital and the Eastman Dental Hospital. The new centre will transform the way that UCLH treats these conditions by providing multidisciplinary care, under one roof and in a modern environment.

Exhibitions

14 January 2015

2.30pm to 7.30pm

Former Student Union Building
43-49 Huntley Street
Bloomsbury WC1E 6DG

15 January 2015

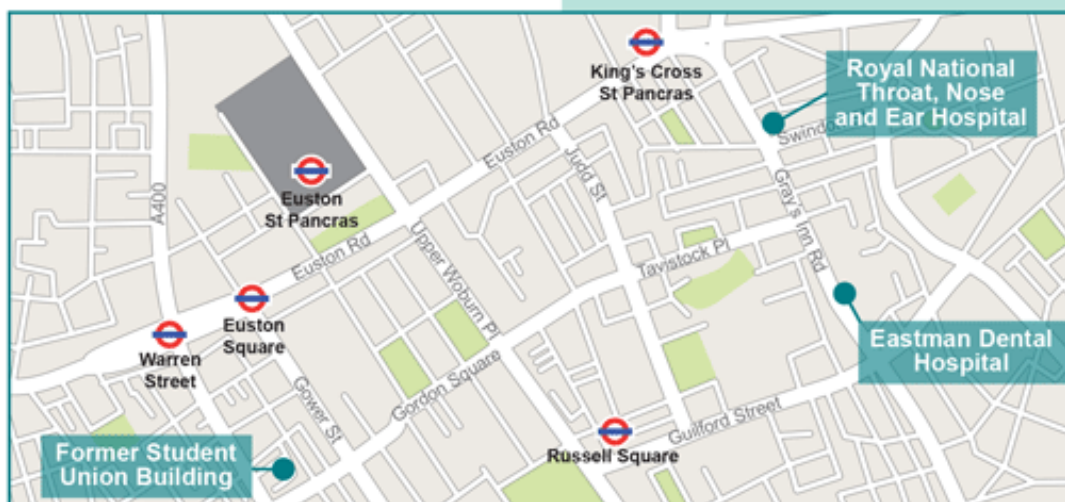
2.30pm to 7.30pm

Royal National Throat,
Nose and Ear Hospital
330 Gray's Inn Road
WC1X 8DA

16 January 2015

1.00pm to 5.30pm

Eastman Dental Hospital
256 Gray's Inn Road
WC1X 8LD



Members of the project team would be delighted to meet you and to discuss our proposals with you. If you have any questions in the mean time, please do not hesitate to get in touch with the community relations team on **020 3447 4477** or information.development@uclh.nhs.uk

Appendix 4– January 2015 exhibition boards

University College London Hospitals **NHS**
NHS Foundation Trust

A new centre for services currently provided
at the Royal National Throat, Nose & Ear
Hospital and the Eastman Dental Hospital

High quality patient care



Indicative image of view of the new building from Huntley Street

Welcome to the second public exhibition about our plans to build a new centre which will be a world leader in the diagnosis, treatment and care of patients with disorders of the ear, nose, throat and mouth - including dental, hearing, speech and balance.

The new building, located on Huntley Street, WC1, would enable UCLH (University College London Hospitals NHS Foundation Trust) to transform the way these conditions are diagnosed, treated and cared for by providing a centre of excellence on a single site, in a central, accessible location.

The proposals will build upon UCLH's programme to improve patient outcomes and the patient experience by ensuring our services operate from modern, efficient, purpose built facilities.

The purpose of today's exhibition is to:

- Display our latter stage plans and concept designs.
- Explain the rationale and need for the proposed development.
- Provide nearby neighbours, patients, staff and members of the local community with a further opportunity to meet the team and have their say.
- Provide an update on project time scales.

Have your say

Your views are important to us. Please do take the time to fill in one of our feedback forms and post it in the comment box provided. We will be reviewing all responses as we work up our final plans before submitting our proposal to Camden Council.

uclh

A new centre for services currently provided at the Royal National Throat, Nose & Ear Hospital and the Eastman Dental Hospital

High quality patient care



Indicative image of view of the new building from Huntley Street

Welcome to the second public exhibition about our plans to build a new centre which will be a world leader in the diagnosis, treatment and care of patients with disorders of the ear, nose, throat and mouth - including dental, hearing, speech and balance.

The new building, located on Huntley Street, WC1, would enable UCLH (University College London Hospitals NHS Foundation Trust) to transform the way these conditions are diagnosed, treated and cared for by providing a centre of excellence on a single site, in a central, accessible location.

The proposals will build upon UCLH's programme to improve patient outcomes and the patient experience by ensuring our services operate from modern, efficient, purpose built facilities.

The purpose of today's exhibition is to:

- Display our latter stage plans and concept designs.
- Explain the rationale and need for the proposed development.
- Provide nearby neighbours, patients, staff and members of the local community with a further opportunity to meet the team and have their say.
- Provide an update on project time scales.

Have your say

Your views are important to us. Please do take the time to fill in one of our feedback forms and post it in the comment box provided. We will be reviewing all responses as we work up our final plans before submitting our proposal to Camden Council.

A new centre for services currently provided at the Royal National Throat, Nose & Ear Hospital and the Eastman Dental Hospital

Better together



Map highlighting distance of current services from each other

At present, UCLH treats disorders of the ear, nose, dental, throat and mouth - including dental, hearing, speech and balance across a range of different locations and facilities in the Bloomsbury area. Hospital sites include:

- The Eastman Dental Hospital.
- The Royal National Throat, Nose and Ear Hospital.
- Queen Square.
- University College Hospital.

Site constraints

While renowned for clinical excellence, these facilities, specifically the Eastman Dental Hospital and the Royal National Throat, Nose and Ear Hospital, present considerable limitations to the current estate.

Whilst they are 'fit for purpose', the buildings are in need of significant capital investment in order to continue to deliver the highest quality patient care and experience. This situation – an ageing estate and the dispersed physical location of services – means that patients are treated in multiple buildings and by largely separate clinical teams. A situation that is leading to a duplication of facilities across the four sites and a lack of 'clinical dialogue' and innovation (for which UCLH is internationally recognised).

Due to a number of site specific constraints, which include limited lease agreements and the current configuration of the two sites, it has not been possible to radically transform existing services.

There is now an opportunity to provide new centralised facilities in line with UCLH's strategy to consolidate a number of its services at the University College Hospital site.

A new centre for services currently provided at the Royal National Throat, Nose & Ear Hospital and the Eastman Dental Hospital

Our proposals

A world leading centre of excellence

Our proposed facility is located on Huntley Street, at the site of the Royal Ear Hospital and the former Students' Union. It will transform the treatment of disorders of the ear, nose, dental, throat and mouth and will become internationally renowned as a hub of clinical expertise in the management and treatment of complex conditions.



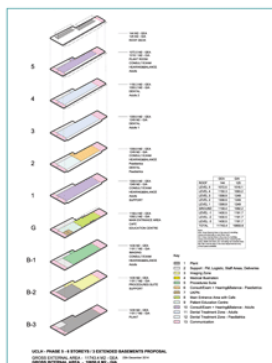
Concept cross section

Key features of the proposals

The new centre will enable UCLH to co-locate a broad range of services and specialists under one roof, within a single building and in a modern multidisciplinary environment.

Key features of the proposals include:

- A one stop shop for the provision of treatment, diagnosis and care of disorders of the ear, nose, throat and mouth - including dental, hearing, speech and balance.
- Transformation of the Royal Ear Hospital and Student Union into a single building at Huntley Street.
- Six floors above and potentially three basement levels below ground.
- A stepped approach to the roof, which ensures that the facility minimises visual impact on local residents.



Concept stacking diagram illustrating key clinical zones

A new centre for services currently provided at the Royal National Throat, Nose & Ear Hospital and the Eastman Dental Hospital

The benefits

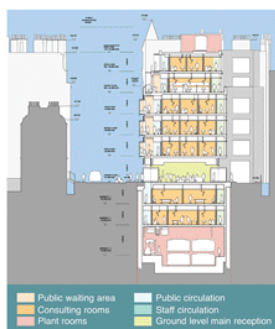


Aerial view of the current site

What are the benefits?

By building a new centre of excellence and co-locating our services, UCLH will deliver a number of clinical, patient and staff related benefits, including:

- The continued provision of top quality patient care.
- Improvements to the patient experience.
- Delivery of improved health outcomes by ensuring that patients have access to the most appropriate and high quality modern services.
- One stop clinics which reduce the need for unnecessary multiple appointment attendances.
- Increased collaboration between clinical teams and an environment where innovation can thrive.

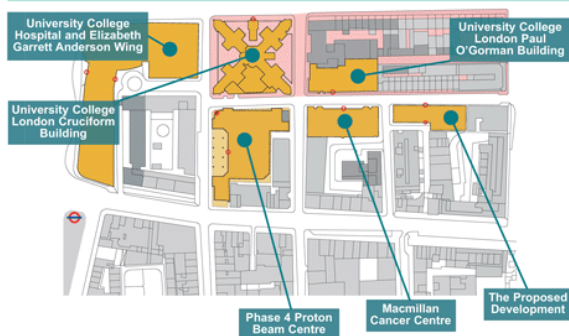


Concept cross section

The new centre would also significantly reduce expenditure on estates maintenance and management.

A new centre for services currently provided at the Royal National Throat, Nose & Ear Hospital and the Eastman Dental Hospital

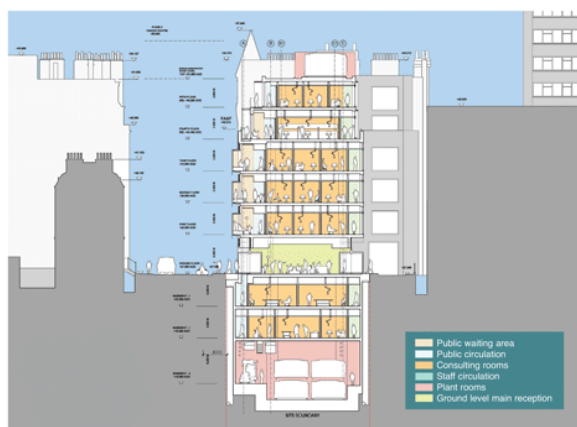
Planning policy



Site plan including conservation area

It is important to UCLH that our proposed centre fits in well with the character of the local area and our neighbours.

As the site falls within the Bloomsbury Conservation Area, our designs for the new facility match the scale and height of their surroundings. The plans also take into consideration Camden Councils draft Fitzrovia Area Action Plan (FAAP) in full.



FAAP massing envelope overlay with building façade and setbacks

A new centre for services currently provided at the Royal National Throat, Nose & Ear Hospital and the Eastman Dental Hospital

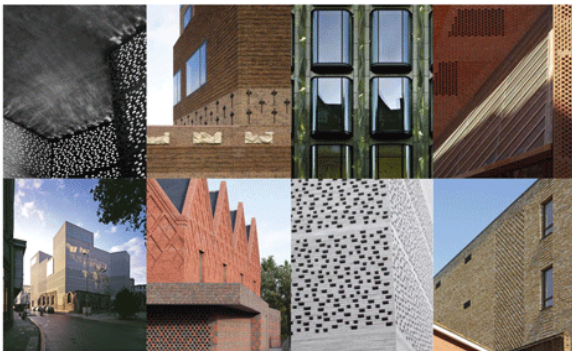
Designing the new facility



Indicative view of the proposed building

The architectural concept for the new world leading centre, proposes a transparent façade along Huntley Street to animate the street edge and to remove some of the 'mystery' of what takes place inside the building.

A new central foyer and atrium is proposed for the midpoint of the building. The atrium is aligned to provide a visual link with Tottenham Court Road.



Indicative design influence examples

A new centre for services currently provided at the Royal National Throat, Nose & Ear Hospital and the Eastman Dental Hospital

Our construction works



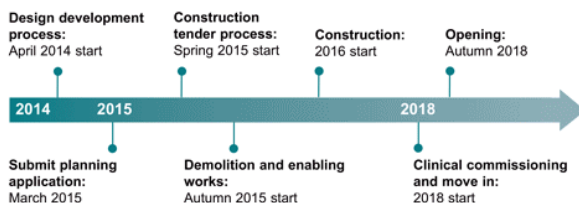
Indicative image of Copper Street

If our proposals are successful and the plans supported by the Trust Board, UCLH will begin construction work on the new facility in late summer 2015.

We anticipate that the construction process would be completed by late 2018.

Throughout this process, UCLH will work to reduce all impacts wherever possible. We will use an experienced team of contractors, who will implement a carefully planned programme designed to minimise disruption.

We will also be sure to keep you up to date on the progress of our plans for the site.



A new centre for services currently provided at the Royal National Throat, Nose & Ear Hospital and the Eastman Dental Hospital

Next steps



Indicative image of internal corridor

Following our exhibition, UCLH will finalise our plans for the site using the feedback that we receive.

Once our application has been submitted, Camden Council will review our proposals and will determine our application. We hope that we can then begin working to deliver our new building in Summer 2015 and moving in during 2018.

Appendix 5 – Feedback forms July 2014

University College London Hospitals **NHS**
NHS Foundation Trust

World leading centre for ear, nose,
throat and oral diseases

Feedback Form

Please return to a member of staff or to Phase 5 Consultation, Local Dialogue Ltd,
FREEPOST NAT3717, London, SE1 2BR.

What are your initial thoughts about the proposals?

lots to admire about this scheme & will be
great to be in a modern building with
good air cooking / heat / light.
Concerned about the space allocated to dental
departments - is there a chance that we will be able to
treat patients over a longer longer day?
From patients & shopping aspect.
Any other comments Model is not very helpful.

uclh

Consent: Your information will be used by Local Dialogue LLP in accordance with the Data Protection Act 1998. Your personal details will not be shared with anyone other than the development team for this project, nor will they be used for any purpose other than consultation regarding this project. Your personal details will not be made public and your comments will only be published in an anonymous format.

World leading centre for ear, nose,
throat and oral diseases

Feedback Form

Please return to a member of staff or to Phase 5 Consultation, Local Dialogue Ltd,
FREEPOST NAT3717, London, SE1 2BR.

What are your initial thoughts about the proposals?

I work at the private side of the
Eastman dental hospital. I am wondering
if we will be having a place in the
new building or not?

Any other comments

uclh

Data Protection: Your information will be used by Local Dialogue LLP for consultation purposes only. Your personal data will not be shared with anyone other than those involved in the project. It will only be used for the purpose of the project. Your personal data will not be made public and your comments will only be published in an anonymous form.

World leading centre for ear, nose,
throat and oral diseases

Feedback Form

Please return to a member of staff or to Phase 5 Consultation, Local Dialogue Ltd,
FREEPOST NAT3717, London, SE1 2BR.

What are your initial thoughts about the proposals?

The proposal looks good. However very
concerned about the move on the stairs
No mention of Dental The EOH is
an institution I unfortunately renamed lets
keep this excellent service & build on it,
concerned number of staff.

Any other comments

uclh

Data Protection: Your information within meaning Local Dialogue Ltd is processed with the Data Protection Act 1998. Your personal details will not be shared with anyone other than the development team for this project, nor will they be used for any purpose other than consultation regarding this project. Your personal details will not be made public and your comments will only be published in anonymous form.

World leading centre for ear, nose,
throat and oral diseases

Feedback Form

Please return to a member of staff or to Phase 5 Consultation, Local Dialogue Ltd,
FREEPOST NAT3717, London, SE1 2BR.

What are your initial thoughts about the proposals?

I am excited by the prospect of the
project and think it will a positive
thing for patients - The organisation about
the staff needs very careful planning.

Any other comments

The people manning the stand were
some what surprising.... One casually
dressed in a jeans and t-shirt.
one in a suit but no name badge.
was not able to answer questions
related to clinical situations... ~~and~~
said he could only answer questions on
the plans.

Data Protection: Your information will be processed by Local Dialogue Ltd in accordance with the Data Protection Act 1998. Your personal details will not be shared with anyone other than the development team for this project, nor will they be used for any purpose other than communications regarding this project. Your personal details will not be made public and your comments will only be published in an anonymous format.

uclh

World leading centre for ear, nose,
throat and oral diseases

Feedback Form

Please return to a member of staff or to Phase 5 Consultation, Local Dialogue Ltd,
FREEPOST NAT3717, London, SE1 2BR.

What are your initial thoughts about the proposals?

The Name of the combine of
ENT & Gashman needs
further discussion.

Any other comments

uclh

Data Protection: Your information will be stored by LocalDialogue LLP in accordance with the Data Protection Act 1998. Your personal information will not be shared with anyone other than the development team for this project, nor will they be used for any purpose other than consultation regarding this project. Your personal details will not be made public and your comments will only be published in an anonymous format.

World leading centre for ear, nose,
throat and oral diseases

Feedback Form

Please return to a member of staff or to Phase 5 Consultation, Local Dialogue Ltd,
FREEPOST NAT3717, London, SE1 2BR.

What are your initial thoughts about the proposals?

Good. Centralising Services beneficial
to Patients

Any other comments

Dental identity lost. and name
does not portray our services as
a whole. Replace oral diseases
with EDH Dental Services.

uclh

UCLH Foundation Trust. Your information will be handled by Local Dialogue Ltd in accordance with the Data Protection Act 1998. Your personal details will not be shared with anyone other than the development team for this project, nor will they be used for any purpose other than consultation regarding this project. Your personal details will not be made public and your comments will only be published in an anonymous format.

World leading centre for ear, nose,
throat and oral diseases

Feedback Form

Please return to a member of staff or to Phase 5 Consultation, Local Dialogue Ltd,
FREEPOST NAT3717, London, SE1 2BR.

What are your initial thoughts about the proposals?

Good, seems a bit bigger - than what I thought. Largest concern
will depend regarding what type / basement, making use of underground
also. Roof garden is very important!

Any other comments

uclh

Data Protection: Your information will be stored by Local Dialogue Ltd in accordance with the Data Protection Act 1998. Your personal information will be shared with anyone other than the development team for this project, and will not be used for any purpose other than communications regarding this project. Your personal details will not be made public and your comments will only be published if you agree to this.

World leading centre for ear, nose,
throat and oral diseases

Feedback Form

Please return to a member of staff or to Phase 5 Consultation, Local Dialogue Ltd,
FREEPOST NAT8717, London, SE1 2BR.

What are your initial thoughts about the proposals?

Good idea to centralised all Dept
under one roof.

Any other comments

The identity of EDH seems lost. Nothing
to mention EDH. we don't only deal
with diseases The work that is done here
help to enhance patients perception
of feel good center.

uclh

Confidentiality: Your information will be stored by Local Dialogue Ltd in accordance with the Data Protection Act 1998. Your personal details will not be shared with anyone other than those involved in the project, nor will they be used for any purpose other than consultation regarding the project. Your personal details will not be made public and your response will only be published if it is anonymous.

World leading centre for ear, nose,
throat and oral diseases

Feedback Form

Please return to a member of staff or to Phase 5 Consultation, Local Dialogue Ltd,
FREEPOST NAT3717, London, SE1 2BR.

What are your initial thoughts about the proposals?

*Concern about EPN identity is 1-12.
Limited information from team on the strand.*

Any other comments

uclh

Data Protection: Your information will be stored by Local Dialogue Ltd in accordance with the Data Protection Act 1998. Your personal details will not be shared with anyone other than the development team for this project. We will only use your data for any purpose other than communications regarding this project. Your personal details will not be made public and your responses will only be published in an anonymous form.

Tues

University College London Hospitals **NHS**
NHS Foundation Trust

World leading centre for ear, nose,
throat and oral diseases

Feedback Form

Please return to a member of staff or to Phase 5 Consultation, Local Dialogue Ltd,
FREEPOST NAT3717, London, SE1 2BR.

What are your initial thoughts about the proposals?

—interesting proposal, good location
Hopefully the new premises will be fit for
purpose to provide world-class ENT services

Any other comments

uclh

This consultation will be closed by Local Dialogue LLP in accordance with the Data Protection Act 1998. Your personal details will not be shared with anyone other than the development team for this project, nor will they be used for any purpose other than consultation regarding this project. Your personal details will only be published in aggregate form.

World leading centre for ear, nose,
throat and oral diseases

Feedback Form

Please return to a member of staff or to Phase 5 Consultation, Local Dialogue Ltd,
FREEPOST NAT3717, London, SE1 2BR.

What are your initial thoughts about the proposals?

The idea of bringing ENT services
closer to main UCLH is good!
What will happen with UCL Ear
Institute? Will it also move?

Any other comments

uclh

Privacy Notice: Your information will be shared by Local Dialogue LLP in connection with the Data Protection Act 2018. Your personal details will not be shared with anyone other than the development team for this project, nor will they be used for any purpose other than any consultation regarding this project. Your personal details will not be made public and your comments will only be published in an anonymous format.

World leading centre for ear, nose,
throat and oral diseases

Feedback Form

Please return to a member of staff or to Phase 5 Consultation, Local Dialogue Ltd,
FREEPOST NAT3747, London, SE1 2BR.

What are your initial thoughts about the proposals?

Good to have the RNTNE services
integrated with the other UCLH services.
Ensuring pathways are established and
maintained especially within UCL and UCLH.

Any other comments

The UCL Ear Institute and RNTNEH
play a key role within research, and
there are many collaborations.

uclh

Local Dialogue Ltd is a company owned by Local Dialogue Ltd. It is associated with the NHS Foundation Trust. Your personal details will not be shared with anyone other than those who need to know for the purposes of the project. Your details will be held for any purpose relating to the project. Your personal details will not be shared with anyone other than those who need to know for the purposes of the project. Your personal details will not be shared with anyone other than those who need to know for the purposes of the project.

World leading centre for ear, nose,
throat and oral diseases

Feedback Form

Please return to a member of staff or to Phase 5 Consultation, Local Dialogue Ltd,
FREEPOST NAT3717, London, SE1 2BR.

What are your initial thoughts about the proposals?

Very interesting ... keep the roof garden! @

Any other comments

uclh

Copyright notice: Your information will be shared by Local Dialogue Ltd in accordance with the Data Protection Act 1998. Your personal details will not be shared with anyone other than the Designated Persons for this project, nor will they be used for any purpose other than communications regarding this project. Your personal details will not be made public and your comments will only be published in an anonymous format.

World leading centre for ear, nose,
throat and oral diseases

Feedback Form

Please return to a member of staff or to Phase 5 Consultation, Local Dialogue Ltd,
FREEPOST NAT3717, London, SE1 2BR.

What are your initial thoughts about the proposals?

It would be good to move closer to the main
campus as this site feels overlooked and
forgotten.

Any other comments

Need to make sure all allied groups have
input ie audiology & Institute etc.
Need to consider pathways
opportunity to standardise computer
record keeping systems.

Data Protection: Your information will be used by Local Dialogue LLP in accordance with the Data Protection Act 1998. Your personal details will not be shared with anyone other than the development team for this project, nor will they be used for any purpose other than consultation regarding this project. Your personal details will not be made public and your anonymity will only be published from emergency services.

uclh

World leading centre for ear, nose,
throat and oral diseases

Feedback Form

Please return to a member of staff or to Phase 5 Consultation, Local Dialogue Ltd,
FREEPOST NAT3717, London, SE1 2BR.

What are your initial thoughts about the proposals?

Any other comments

Well presented
All questions answered
Presenters were friendly and approach-
able.

uclh

Data Protection: Your information will be handled by Local Dialogue Ltd, in accordance with the Data Protection Act 1998. Your personal details will not be shared with anyone other than the development team for this project, nor will they be used for any other purpose other than consultation regarding this project. Your personal details will only be used for research and will only be published in an aggregated form.

World leading centre for ear, nose,
throat and oral diseases

Feedback Form

Please return to a member of staff or to Phase 5 Consultation, Local Dialogue Ltd,
FREEPOST NAT3717, London, SE1 2BR.

What are your initial thoughts about the proposals?

- Generally supportive of the proposal (see the benefits for UCLH to have an integrated centre?)
 - Wanting to see more concrete design elements to make a fully integrated world class centre to take into account the different projects in the area (e.g. West End Project). For example I would support making this part of Hareley St pedestrianised.
- Any other comments none.

uclh

Data Protection: Your information will be stored by Local Dialogue Ltd in accordance with the Data Protection Act 1998. Your personal details will not be shared with anyone other than the development team for this project. We will only use your personal details for any purpose other than your consented use of this service. Your personal details will not be made public and your comments will only be published with your consent.

TWIPS

University College London Hospitals **NHS**
NHS Foundation Trust

World leading centre for ear, nose,
throat and oral diseases

Feedback Form

Please return to a member of staff or to Phase 5 Consultation, Local Dialogue Ltd,
FREEPOST NAT3717, London, SE1 2BR.

What are your initial thoughts about the proposals?

Better than the neglect these buildings suffer
at present and have done for years
Doubt about the height restrictions
Unsatisfactory Basement clinical areas.

Any other comments

Who maintains the roof garden?
The model was useful to visualize the site.
Close alliance with TNE is a sound idea
but both organizations need due space.

uclh

Confidentiality: Your information will be treated by Local Dialogue LLP in accordance with applicable data protection law. Your personal data will not be shared with anyone other than the multipurpose team for this project, nor will it be used for any purpose other than consultation on the development of the project. Your personal data will not be made public and your comments will only be published in summary form.

World leading centre for ear, nose,
throat and oral diseases

Feedback Form

Please return to a member of staff or to Phase 5 Consultation, Local Dialogue Ltd,
FREEPOST NAT3717, London, SE1 2BR.

What are your initial thoughts about the proposals?

MY FLAT ADSORBS THE STUDENTS UNION.
THERE IS A HUGE AMOUNT OF NOISE TRANSFERENCE
THROUGH THE WALLS AND LEGAL ACTION HAD TO
BE TAKEN BY ME TO LIMIT THE TIMES THAT MUSIC WAS
PLAYED ALSO NOISE OF FURNITURE REVERBERATING INTO
MY FLAT, & IN PARTICULAR MY BEDROOM.

Any other comments

AT THE PUBLIC CONSULTATION I WAS ASSURED THAT
SOUND PROOFING WOULD BE PARAMOUNT AND
THAT THERE WOULD BE A GAP BETWEEN THE
PARTY WALLS.

THIS IS MY ONLY CONCERN, OTHER THAN
INCREASE IN VEHICLES

UCLH Foundation Trust. Your information will be shared by UCLH with UCLH in accordance with the Data Protection Act 1998. Your personal details will not be shared with anyone else without your consent. Your information will be used for the purposes of the project, but will not be used for any other purpose. Your personal details will not be made public and your comments will only be published in an anonymous format.

uclh

World leading centre for ear, nose,
throat and oral diseases

Feedback Form

Please return to a member of staff or to Phase 5 Consultation, Local Dialogue Ltd,
FREEPOST NAT3717, London, SE1 2BR.

What are your initial thoughts about the proposals?

*I suggest that you decide to be good neighbours and
make your roof garden accessible to residents of Andon
House. It would also be neighbourly to offer the Andon
House residents a room periodically
for resident meetings/gatherings*

Any other comments

uclh

Phase 5 Consultation Feedback forms will be provided to Local Dialogue Ltd for consultation with the UCLH Foundation Trust. Your personal details will not be shared with the UCLH Foundation Trust for any other purpose, nor will they be used for any purpose other than consultation regarding this project. Your personal details will be made public and your comments will only be published in an anonymous format.

World leading centre for ear, nose, throat and oral diseases

Feedback Form

Please return to a member of staff or to Phase 5 Consultation, Local Dialogue Ltd, FREEPOST NAT3717, London, SE1 2BR.

What are your initial thoughts about the proposals?

I am concerned about the increased height/mass of the section currently occupied by the Students' union. We would need assurances regarding impact on light, sound, noise, pollution (e.g. cooking) and consequences for traffic in light of West End Project proposals which will significantly increase traffic on Tottenham Place.

A website should be put in place to include recent plans. The website should be updated regularly to allow local people to examine the issues properly.

uclh

Privacy Protection: Your comments will be stored by Local Dialogue LLP in accordance with the Data Protection Act 1998. The purpose of details will not be shared with anyone other than the development team for the proposed, nor will they be used for any purpose other than consultation regarding this project. Your personal details will not be made public and your comments will only be published in aggregate form.

World leading centre for ear, nose,
throat and oral diseases

Feedback Form

Please return to a member of staff or to Phase 5 Consultation, Local Dialogue Ltd,
FREEPOST NAT3717, London, SE1 2BR.

What are your initial thoughts about the proposals?

Seems in proportion and
an asset.

Any other comments

Great luck

uclh

Announcements Your information will be shared by Local Dialogue Ltd in accordance with the Data Protection Act 1998. Your personal information will be shared with anyone who develops proposals more for this project, except they will not be used for any purpose other than communications regarding this project. Your personal details will not be made public and your comments will only be published in an anonymous form.

World leading centre for ear, nose,
throat and oral diseases

Feedback Form

Please return to a member of staff or to Phase 5 Consultation, Local Dialogue Ltd,
FREEPOST NAT3717, London, SE1 2BR.

What are your initial thoughts about the proposals?

Delighted. Totally supportive.

Any other comments

*There are, unfortunately, too many local residents who
seem to object automatically to anything the hospital
proposes. Ignore them.*

uclh

Local Dialogue Ltd (LDD) is a company owned by Local Dialogue LLP. It is a limited liability company registered in England. Your personal details will not be shared with anyone other than the designated team for this project, nor will they be used for any purpose other than communications regarding this project. Your personal details will not be made public and your comments will only be published in an anonymous format.

World leading centre for ear, nose,
throat and oral diseases

Feedback Form

Please return to a member of staff or to Phase 5 Consultation, Local Dialogue Ltd,
FREEPOST NAT3717, London, SE1 2BR.

What are your initial thoughts about the proposals?

A pity its not quite as comprehensive as
might be hoped — NO RADIOTHERAPY
or LP SURGERY ON SITE. SO MULTIPLE
APPOINTMENTS WILL BE NECESSARY.

Any other comments

EVEN MORE ELDERLY DISABLED AND VERY
YOUNG PATIENTS IN THE AREA, WHERE
THERE IS ALREADY INADEQUATE
PARKING FOR THEM + VISITORS.
DIFFICULTY FOR AMBULANCES, SERVICE
VEHICLES + HOSPITAL CARS. CAMDONS
'WESTEND' PROPOSALS WOULD MAKE ACCESS
FOR SOME EVEN MORE DIFFICULT THAN
NOW.

Data Protection: Your information will be stored by Local Dialogue Ltd in accordance with the Data Protection Act 1998. Your personal details will not be shared with anyone other than those involved in the project, nor will they be used for any purposes other than consultation regarding this project. Your personal details will not be made public and your comments will only be published when appropriate to do so.

uclh

Appendix 6 – Feedback forms January 2015

University College London Hospitals **NHS**
NHS Foundation Trust

uclh

A new cancer treatment centre is planned for the
Royal Free and Thomas Nelson & Lang Hospital and the
Barnet Denley Hospital.

Feedback Form

Please return to a member of staff or to UCLH Phase 5 Consultation, FREEPOST
RTLA-GHRX-SSXA, Local Dialogue, 77a Tradescant Road, London SW8 1XJ.

What are your thoughts about the updated proposals?

Any other comments:

Re: Low structure giving access for
vehicle noise to Gordon Mansions

Between the Lagari Investments
property and the proposed UCLH
Head & Neck building, there is a
low structure (air-con & think) → To

Your feedback on this information will be shared with Local Dialogue Ltd in accordance with the Data Protection Act 1998. Your personal details will not be shared with anyone other than the development team for this project, but will be used for any purpose of further communication regarding this project. Your personal details will not be made public and your comments will only be published with your consent.

which creates a gap in the otherwise high walls between UCLH loading bay and UCL (Torrington Place) Yard.

Noise entering UCL Yard affects the rear of Gordon Mansions.

Service vehicles will be backing into UCLH loading bay and very close to this 'gap' in our defences.

Would it be possible for UCLH to negotiate with Lagan for this 'gap' to be closed - simply in order to defend residents against preventable noise?

uclh

Amplify your voice and share your views by participating in our
Phase 6 Consultation: Throat, Nose & Ear Health and the
Future of the NDT Service

Feedback Form

Please return to a member of staff or to UCLH Phase 6 Consultation, FREEPOST
RTLA-GHRX-SSXA, Local Dialogue, 77a Tradebant Road, London SW8 1XJ.

What are your thoughts about the updated proposals?

WE ARE VERY KEEN TO WORK ALONGSIDE YOURSELF IN CONNECTION
WITH THE SUPPLY OF CLINICAL FURNITURE AND EQUIPMENT IN
PHASE 4 AND PHASE 5. WE HAVE BEEN EXTENSIVELY INVOLVED WITH
THE TRUST ON OTHER SCHEMES SUCH AS THE MACMILLAN CANCER
CENTRE AND ELIZABETH GARRETT ANDERSON SCHEMES. I AM
VERY IMPRESSED BY THE PROPOSALS AND WILL KEEP IN TOUCH.

Any other comments

WE ARE VERY WILLING TO TRIAL EQUIPMENT, SET UP MOCK-UP
ROOMS, PROVIDE PRODUCT LITERATURE, PDFS, TECHNICAL INFO
AND HELP IN ANY WAY WE CAN TO PROVIDE COST EFFECTIVE
SOLUTIONS TO YOUR EQUIPMENT REQUIREMENTS. THANK
YOU FOR YOUR BUSINESS OVER THE YEARS AND WE LOOK
FORWARD TO WORKING WITH YOU AND HELPING IN ANY
WAY WE CAN. WE HAVE A SHOWROOM IN PADDENHAM WOOD -
PLEASE FEEL FREE TO CALL AND BOOK AN APPOINTMENT WITH
ME OR ONE OF MY COLLEAGUES. THANKS.

UCLH Foundation Trust Information will be shared by UCLH Foundation Trust with the Data Protection Act 1998. Your personal data will not be shared with
anyone other than the Foundation Trust for this project, nor will it be used for any purpose other than those specifically mentioned in this project. Your personal details
will not be made public and your comments will only be published as an anonymous comment.

uclh

Answering the call for a new, integrated, new approach to the Royal National Throat, Nose & Ear Hospital and the Eastern Dental Hospital

Feedback Form

Please return to a member of staff or to UCLH Phase 5 Consultation, FREEPOST
RTLA-GHFX-SSXA, Local Dialogue, 77a Tradescent Road, London SW8 1XJ.

What are your thoughts about the updated proposals?

Seem coherent and will enable patient
services to be more centralised.

Any other comments

I hope patients will be involved
in the development process

Data Protection: Your information will be stored by Local Dialogue Ltd in accordance with the Data Protection Act 1998. Your personal details will be shared with the service development team for the purpose of the project. Your personal details will not be made public and your comments will only be published in an anonymous format.

uclh

Answer this form to help us to identify how we can improve the Royal National Theatre Dental School and Hospital and the Eastman Dental Institute.

Feedback Form

Please return to a member of staff or to UCLH Phase 5 Consultation, FREEPOST
RTLA-GHFX-SSXA, Local Dialogue, 77a Tredescant Road, London SW6 1XL

What are your thoughts about the updated proposals?

The new building is far too small. It appears to mean that the UCL Eastman Dental Institute post-graduate programs will end. This means the loss of one of the world's leading dental teaching facilities.

Any other comments

I would hope that some alternative facilities are being made which integrate hands-on clinical teaching with dental laboratory facilities and access to lecture theatres, recording:

Data Protection: Your information will be used by UCLH in accordance with the Data Protection Act 1998. Your personal details will not be shared with anyone other than the development team for this project, nor will they be used for any purpose other than consultation regarding this project. Your personal details will not be made public and your comments will only be published if you consent to this.

uclh

We would like to hear what you think about the
Royal National Theatre, National Portrait Gallery and the
National Museum of Natural History.

Feedback Form

Please return to a member of staff or to UCLH Phase 5 Consultation, FREEPOST
RTLA-GHFX-SSXA, Local Dialogue, 77a Tradescant Road, London SW8 1XL.

What are your thoughts about the updated proposals?

Good to provide a new use
for these old buildings..

Any other comments

Concern about height.
Exhibition lighting very
poor. No effort made to
improve.

UCLH Foundation Trust Information will be used by UCLH Foundation Trust in accordance with the Freedom of Information Act 2000. Your personal details will not be shared with
anyone other than the development team for this project, nor will they be used for any purpose other than consultation on this project. Your personal details
will not be made public and your comments will only be published in an anonymous format.

uclh

General practice services are currently provided at the Royal National Throat Nose & Ear Hospital and the Royal Dental Hospital.

Feedback Form

Please return to a member of staff or to UCLH Phase 5 Consultation, FREEPOST
RTLA-GHFX-S8XA, Local Dialogue, 77a Trellicker Road, London SW8 1XL.

What are your thoughts about the updated proposals?

The proposals are interesting but:

- ① The footprint is rather small
- ② You rightly mention that the Eastman is a world renowned hospital. This is because it has

Any other comments: a long tradition of teaching allied to the delivery of care. The plans do not seem to make any provision for the integral delivery of teaching. Dentistry is a practical science and it is essential that clinical teaching and laboratory support are provided for. Without this provision I fear the Eastman will be in danger of becoming just a dental hospital and will lose the world renowned reputation.

Important Notice: Your information will be shared by Local Dialogue with appropriate members of the University of London. Your personal details will not be shared with anyone other than the development team for this project, nor will they be used for any purpose other than communications relating to this project. Your personal details will not be made public and your comments will only be published in summary form.