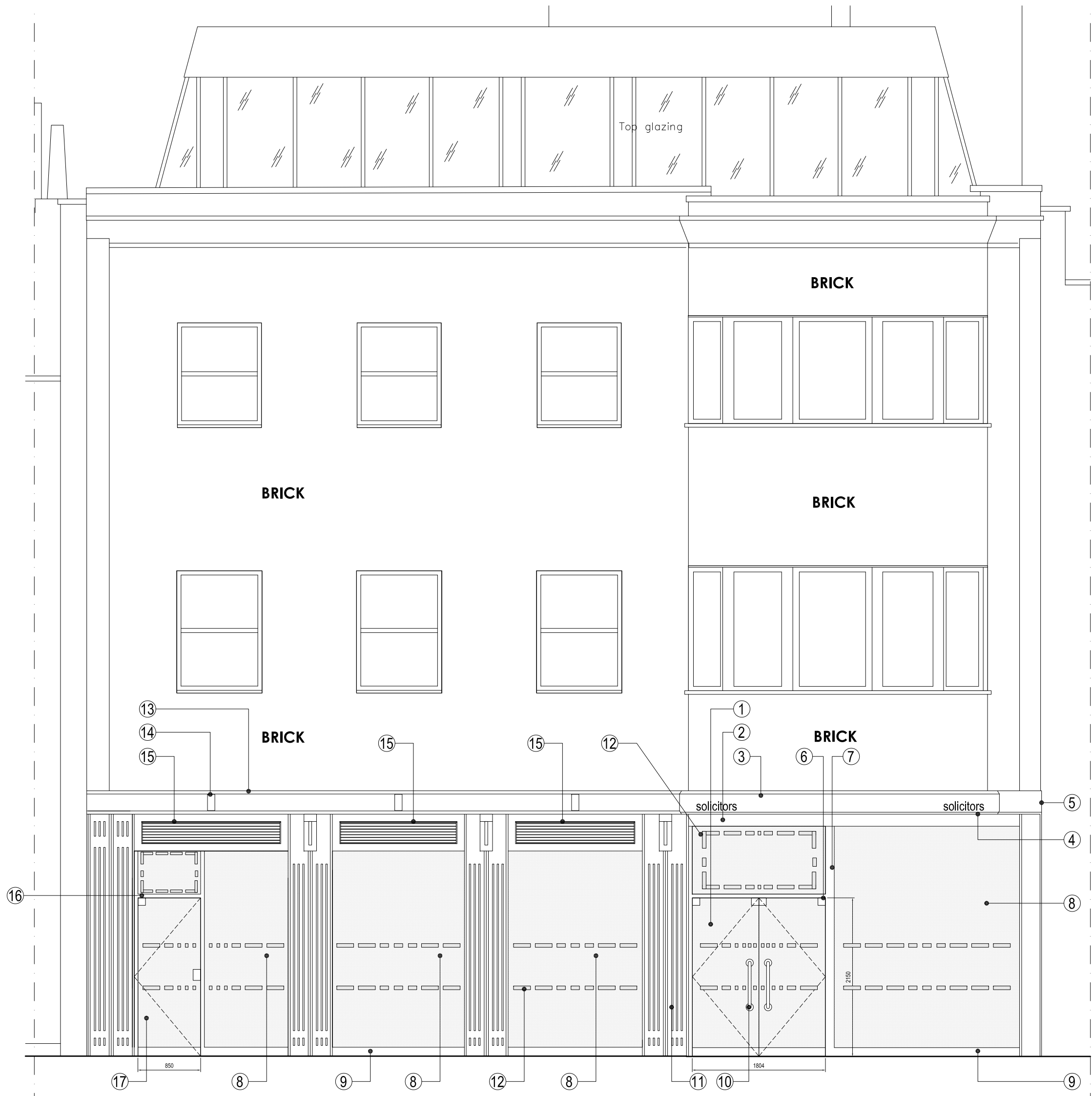


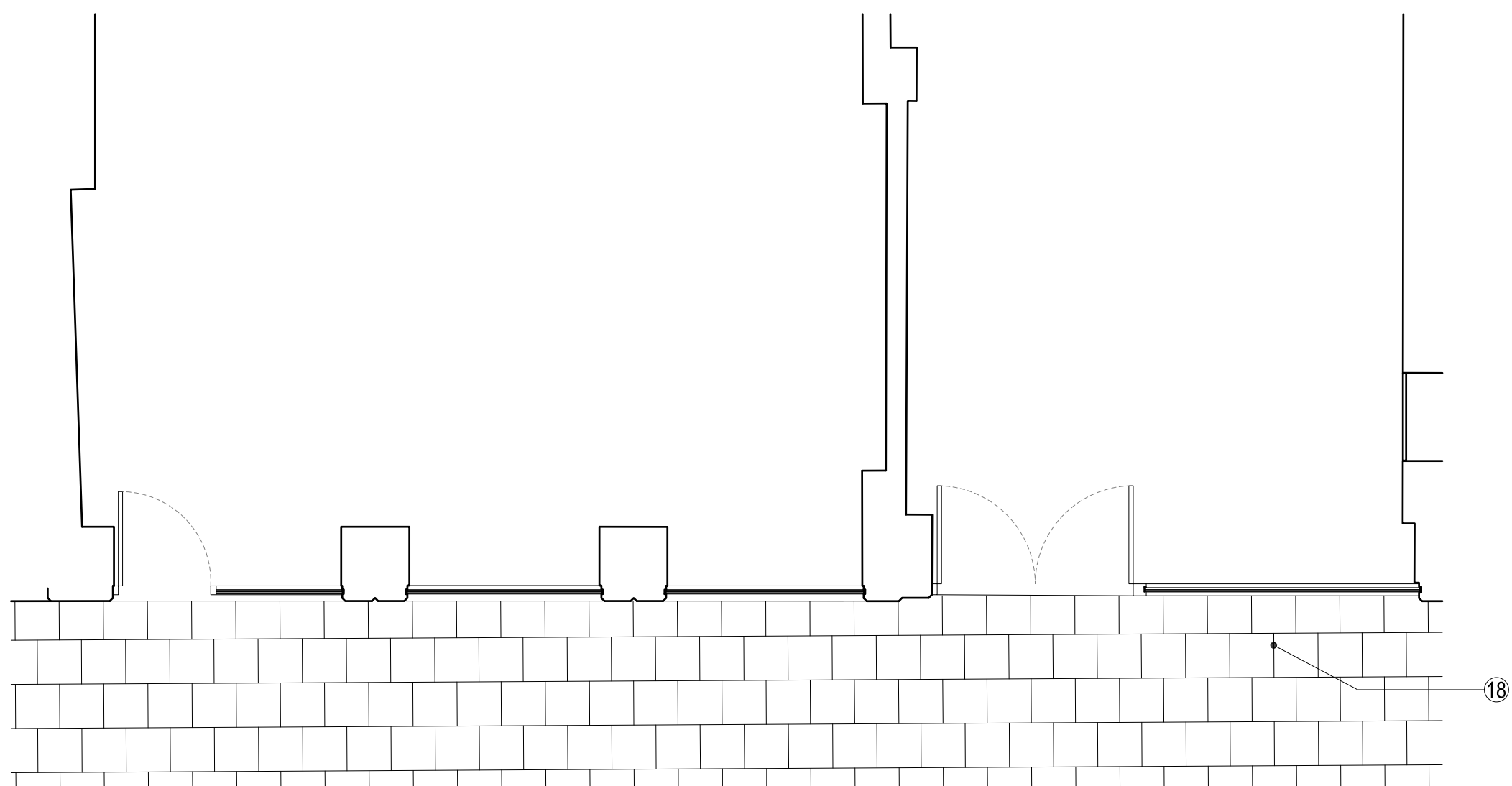
1 PROPOSED SIDE ELEVATION  
Scale: 1:50

13. Existing reconstituted stone cornice detail retained and cleaned.
14. New up & down lights.
15. Made to measure brooke air AC vents with weather louvers. Powder coated to RAL No. 7016 vents to provide fresh air & extraction from internal areas of grand floor.
16. New brushed stainless steel frame to glazed door.
17. 12mm toughened glass emergency exit door with with patch panel fittings for hinges and locks.



2 PROPOSED FRONT ELEVATION  
Scale: 1:50

1. New 12mm thick toughened glass entrance doors on new brushed stainless steel patch hinges within brushed stainless steel frame.
2. Existing render detail decorated to match louvers color reference RAL.7016.
3. Existing reconstituted stone band to bay retained and cleaned.
4. New spotlights to be provided to bay soffit to match existing.
5. Existing reconstituted stone hunching retained & cleaned.
6. New patch hinges finished with brushed stainless steel.
7. New brushed stainless steel mullions & frame for glass entrance doors.
8. New 9mm thick laminated PBV clear glass within recessed stainless steel frame.
9. 120 mm brushed stainless steel bottom rail.
10. New brushed stainless steel door furniture.
11. Existing decorative painted pilasters. Prepared & redecorated to match louver panels hand of shop front colour reference: RAL 7016.
12. Future manifestations to be confirmed.



3 PROPOSED GF PLAN - FRONT ENTRANCE  
Scale: 1:50

18. Paving slabs to the front of Livery House to be removed, ground leveled and new sympathetic paving slabs relayed to match concrete sets to office front.

NOTES

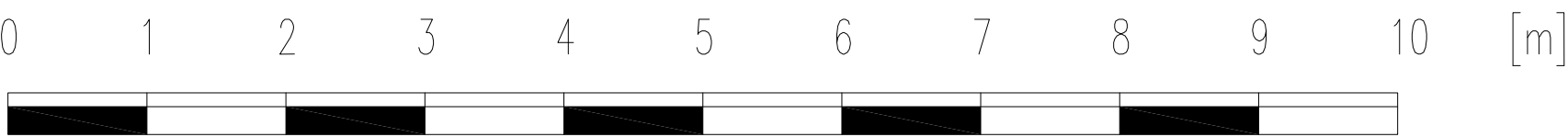
All dimensions and levels to be checked by Contractor and verified before work commences; dimensions must be not be scaled from this drawing.

Copyright reserved.

EC REGULATIONS - GENERAL NOTE

Where reference is made on this drawing to British Standards or to specific manufacturer's products or trade names, this is intended to indicate a minimum acceptable standard of performance etc. Materials and components conforming to an equivalent European Standard may be used and supporting evidence shall be produced at tender stage to confirm fitness for purpose.

•	•	•	•
•	•	•	•
•	•	•	•
•	•	•	•
revisions			
PLANNING ISSUE			
BOSEM LLP			
One Bridge Wharf 156 Caledonian Road, London N1 9UU Tel: 020 7636 6833			
Threeways House 36 George Street, Oxford OX1 2BJ Tel: 01865 260 600			
e-mail: info@tmd-surveyors.co.uk www.tmd-surveyors.co.uk			
Project			
LIVERY HOUSE 7 - 9 PRATT STREET CAMDEN LONDON NW1			
Drawing:			
PROPOSED GROUND FLOOR PLAN, SIDE & SHOP FRONT ELEVATION			
Scale: 1:50@A1 1:100@A3	Date: FEB 2015	Drawn By: MS	Checked By: RQ
Job No. P14-7343	Dwg No. PL-01	Rev'n • • • •	• • • •
A1			



SCALE BAR - 1: 50 @ A1