

Maiden Lane Exhibition Plan  
Feature 8

## EXTERIOR DOORWAY

An eye-catching abstract vinyl will surround the front door, showing customers that XY has arrived.



DOOR BUZZER LABEL



**Me & Dave** • XY Launch Expo

Ref G - Exterior Doorway

Digital brickwrap vinyl applied directly to wall 50mm bleed added to the inside edge of door- use bleed

3328mm

2972mm

XY



MARKETING SUITE

MARKETING SUITE

50mm bleed area

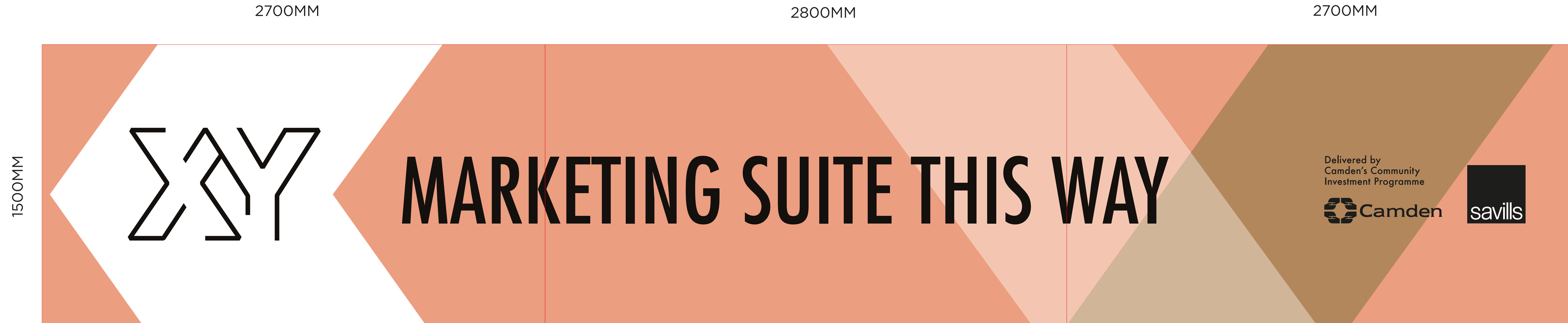
Me & Dave • XY Launch Expo

Ref G - Exterior Doorway

Digital brickwrap vinyl applied directly to wall 50mm bleed added to the inside edge of door- use bleed

## SIDE PANEL

A dibond panel situated on the approach to the Marketing Suite.



### Me & Dave • XY Launch Expo

Ref L - Car park Dibond panels, 3x dibond panels, digital print onto vinyl with matt laminate and wrap edges on dibond

2' x 3' batten packer on face side fixed directly through fence to 2' x 3' timber / 10mm holes drilled into 2' to allow for large cable ties to tie the top

Dibond fixed directly to frame with black screws

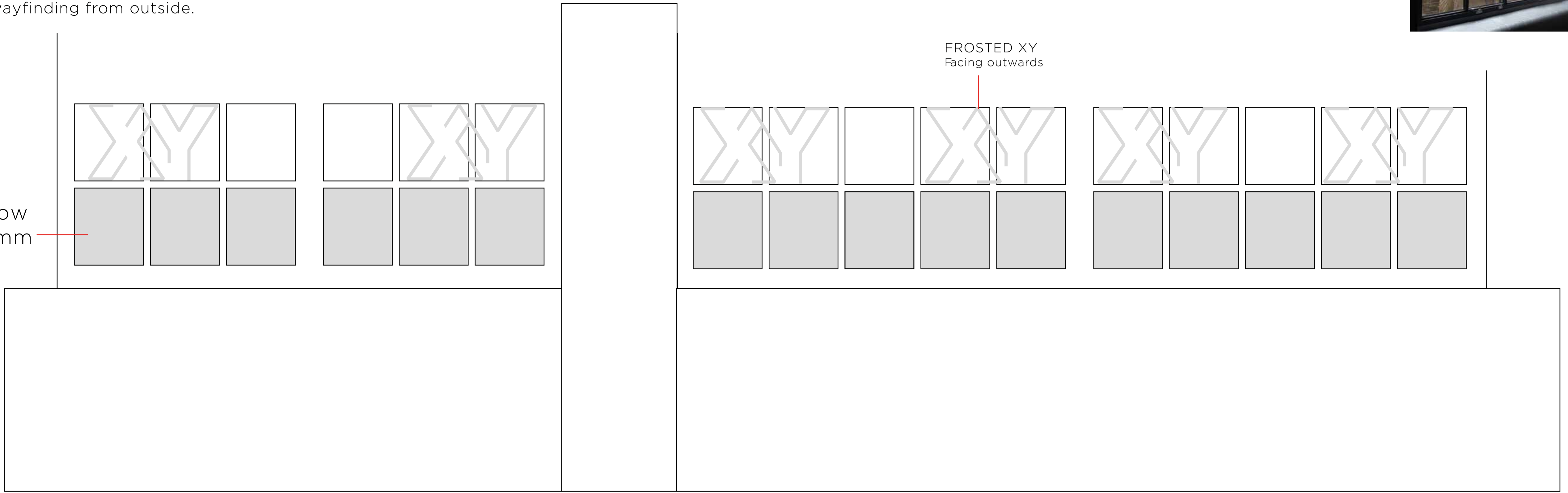
## BACK WINDOWS

Frosted bottom windows for privacy, and partially obscured top windows to assist in wayfinding from outside.



FROSTED XY  
Facing outwards

Each window  
295 x 330mm



## FENCE BANNER

A banner situated at the end of Field Street.

Alternative messaging could be more descriptive, ie. Marketing Suite

50mm added all around for hemming

6000mm

