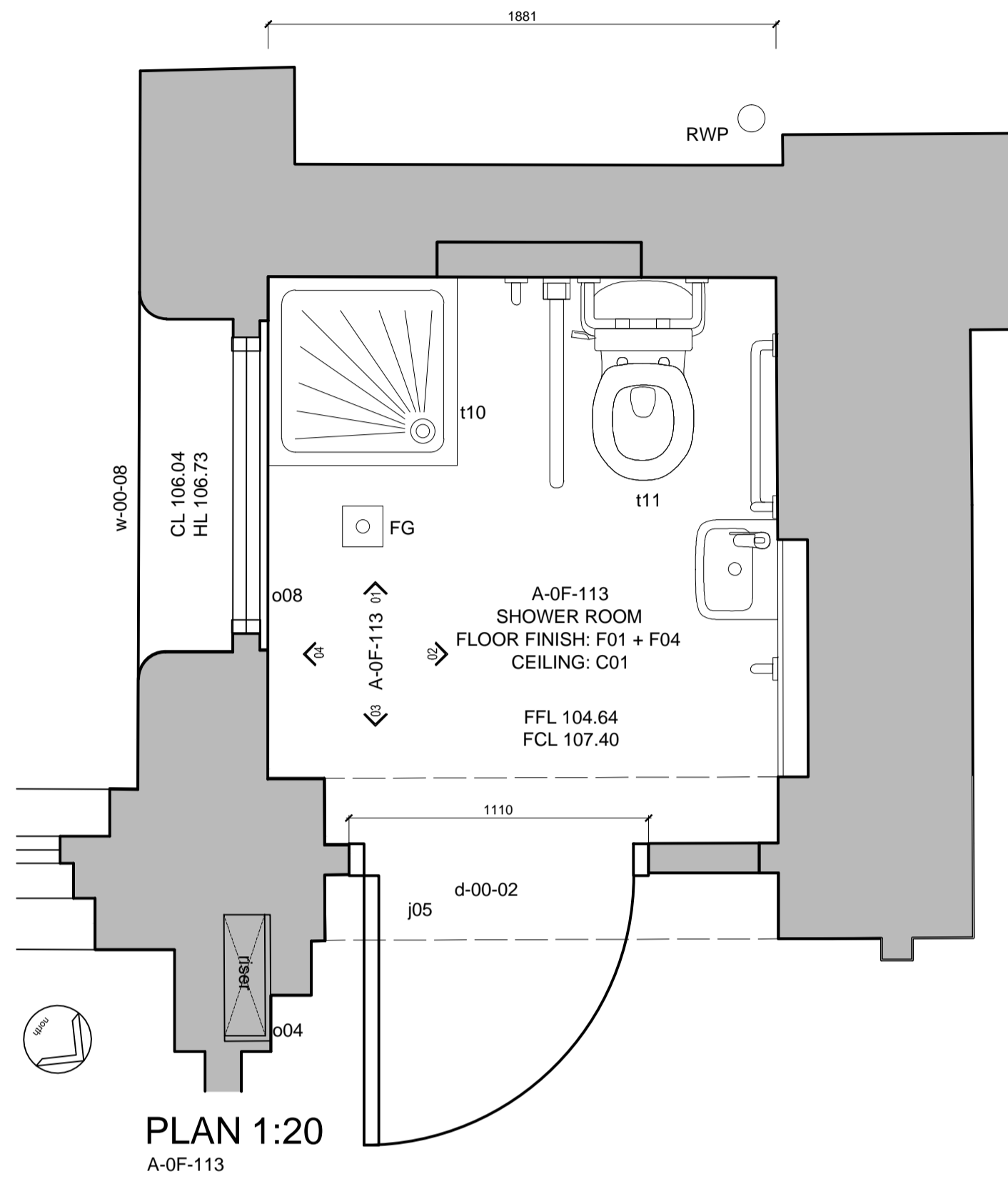
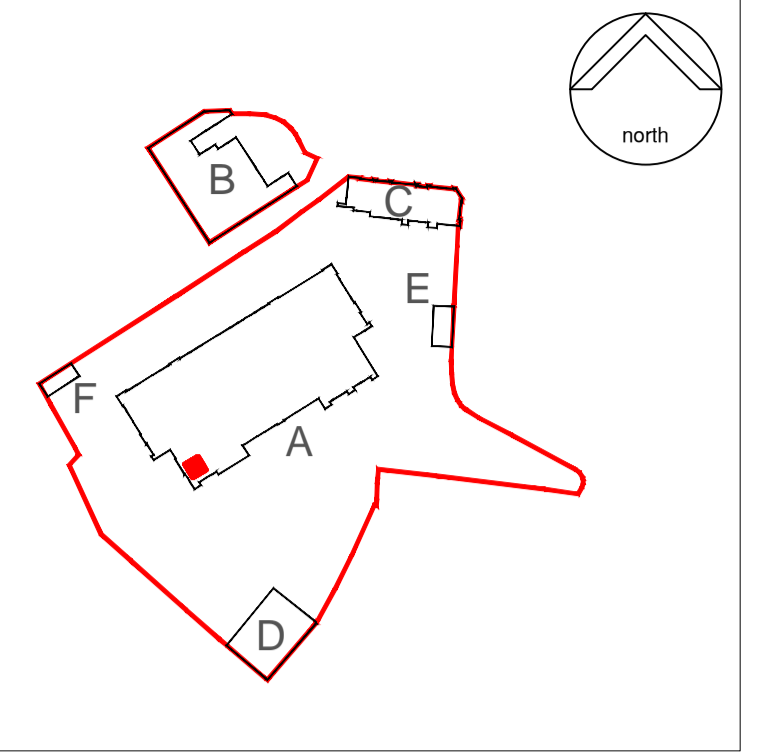


NOTES:

This drawing is produced for use in this project only and may not be used for any other purpose. NPS Property Consultants Ltd accept no liability for the use of this drawing other than the purpose for which it was intended in connection with this project as recorded on the title block fields 'Purpose for Issue' and 'File Status Code'.
 This drawing may not be reproduced in any form without prior written agreement.
 Do not scale from the drawing, use written dimensions only.

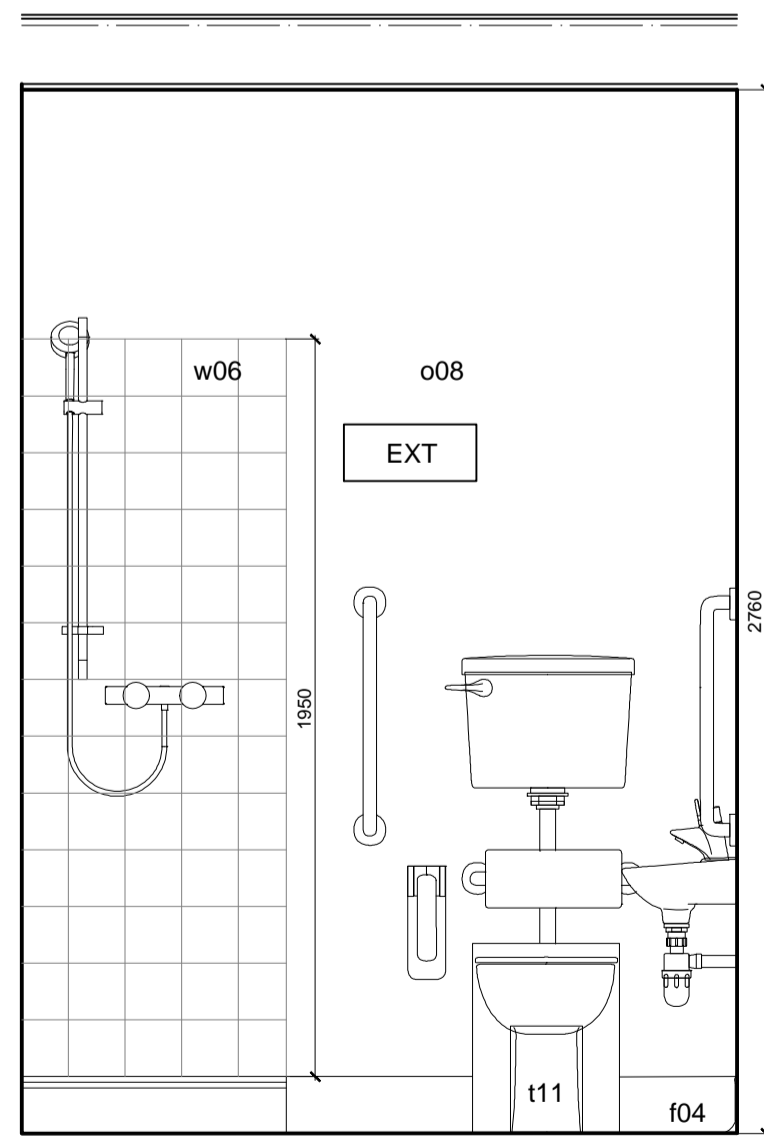
KEY PLAN



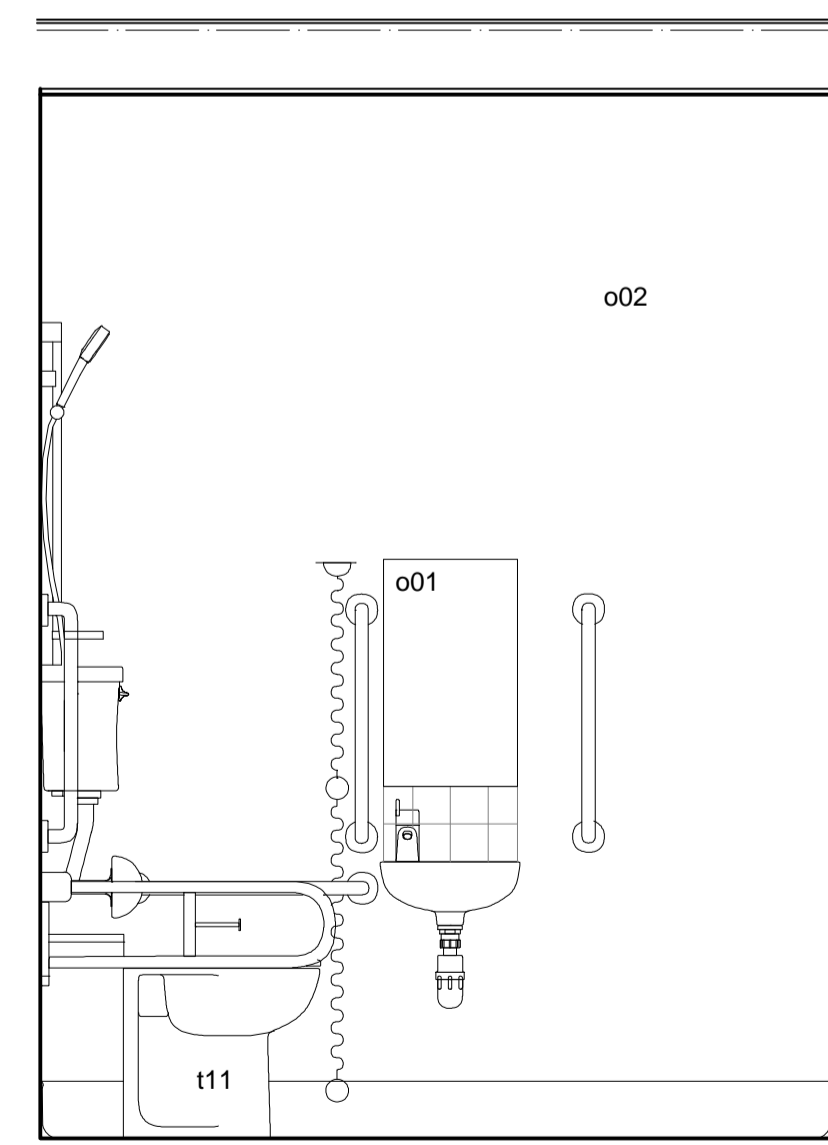
SUITABILITY WORKS KEY

WC REFURBISHMENT

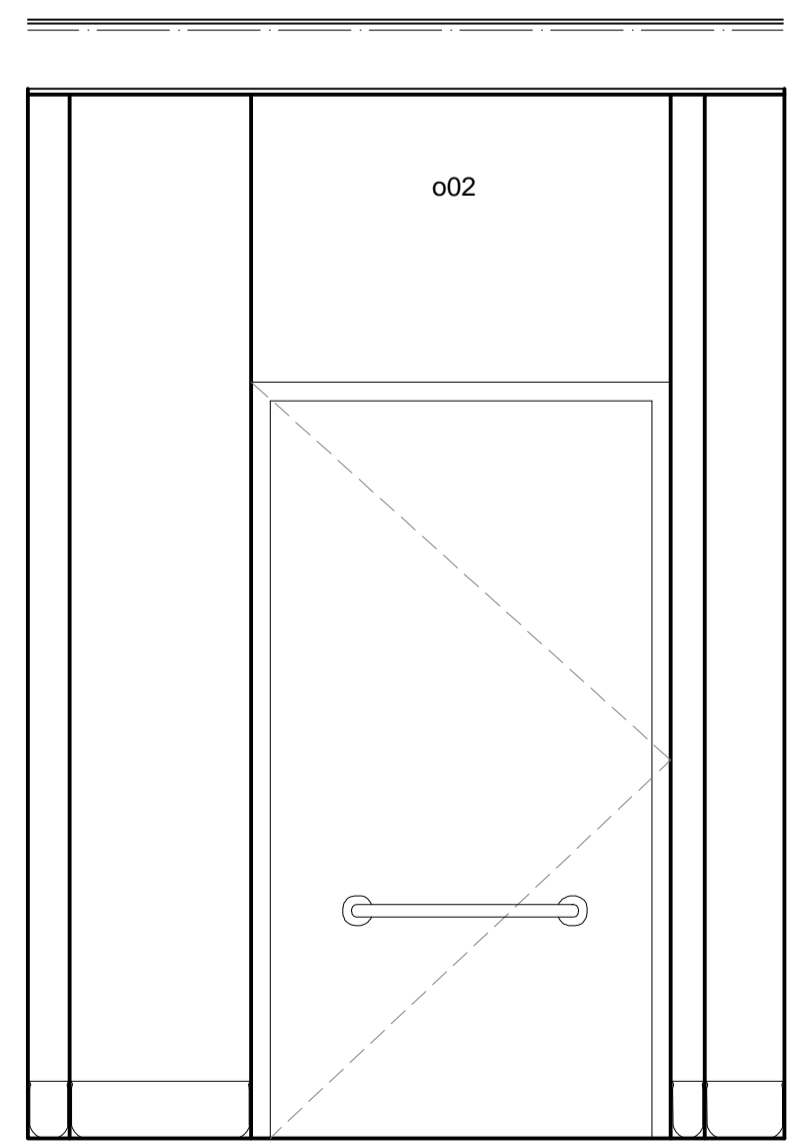
- Walls**
- w01 Eggshell vinyl paint on existing walls - NBS ref M60110
 - w02 Eggshell vinyl paint on new partition - NBS ref M60110
 - w03 PVC sheet splashback - NBS ref K32151
 - w04 Glazing to existing external windows - NBS ref L40230 or 231
 - w05 Existing wall surface retained/protected - no works required
 - w06 Ceramic tiling to wall - NBS ref M40110
 - w07 Ceramic tiling to wall - NBS ref M40111
- Floors**
- f01 Non slip vinyl - NBS ref M50151
 - f02 Existing parquet floor retained/protected - NBS ref M42110
 - f03 Threshold strip between floor finishes - NBS ref M50740
 - f04 Coved skirting - NBS ref M50771
 - f05 Carpet tile - NBS ref M50147
- Ceilings**
- c01 Moisture resistant plasterboard - NBS ref K10246 and M60111
 - c02 Demountable ceiling - NBS ref K40115
 - c03 Existing ceiling redecorated - NBS ref K101725 and M60111
 - c04 Plasterboard - NBS ref K10245 and M60111
- Joinery / Fixtures and Fittings**
- j01 Accessible duct system - NBS ref K32150
 - j02 Cubicle system - NBS ref K32150A
 - Ground floor door panel height: 1100mm (1250mm from FFL)
 - First floor door panel height: 1300mm (1450mm from FFL)
 - Second floor door panel height: 1500mm (1650mm from FFL)
 - j03 Cubicle stud partitions - NBS ref K10127
 - j04 Existing door retainer - NBS ref C01360 and 720
 - j05 New door - NBS ref L20410
 - j06 New skirting - NBS ref P20110 and M601130
 - j07 Rebuild existing timber glazed screen as deep 600, C51070, 720 and L40232
 - j08 New window sill - NBS ref P20112
 - j09 New timber glazed screen as deep 800 and L40231
- Others**
- o01 Mirror - NBS ref N13438A
 - o02 Drying (Adhesive) - NBS ref K10185A
 - o03 FR60 stud partition with moisture resistant plasterboard and plywood lining - NBS ref K10125B
 - o04 Fire resistant riser duct - NBS ref K10125A
 - o05 FR 60 acoustic infill - NBS ref K10205A
 - o06 Boring in to services - NBS ref P20170
 - o07 Opaque privacy film to glazing - NBS ref L40610
 - o08 Drying (MF) - NBS ref K10145B
 - o09 Timber stud packing - NBS ref K10205
- Sanitaryware**
- s01 Boys urinals - NBS ref N131315A
 - s02 Refer to manufacturer's guidance for recommended mounting heights for children
 - s03 Pupils wcs (BTW low height) - NBS ref N131305A
 - s04 Pupils wcs (BTW standard height) - NBS ref N131300B
 - s04 Staff wcs (CG) - NBS ref N131300C
 - s05 Trough w/c & taps - NBS ref N131331A
 - s06 Adult w/c - NBS ref N131335C
 - s07 Cleaners sink & taps - NBS ref N131331A
 - s08 Drinking fountain - supplied by client fitted by contractor
 - s09 Electric hand drier - NBS ref N131472A
 - s10 Pupils shower - NBS ref N131375
 - s11 Doc M WC pack - NBS ref N131310
- Services**
- sVP Soil and vent pipe as services engineers documents
 - FS Fixed spur as services engineers documents
 - EXT Extract fan as services engineers documents
 - S Fire alarm sander as services engineers documents
 - ER Existing radiator retained as services engineers documents
 - RL Relocated existing radiator as services engineers documents
 - NR New radiator as services engineers documents
 - ATG Air transfer grille
 - FG Floor gully as services engineers documents
- All service runs are to be concealed within floors, doors, walls, ducts and windows unless where shown.
 Contractors services installation and BWC drawings are to precisely confirm routing of all services and containment concealed to termination positions shown on internal room elevations.
 To read in conjunction with:
 • Architect's drawings and specification;
 • Services and Structural Engineer's drawings and specification;
 • ICT consultant's specification.
 Contractor to provide method statement prior to commencement of demolition/stripping out works.
 Setting out to be co-ordinated with finishes, service supplies and structure.
 Dimensions shown to be verified on site prior to construction.



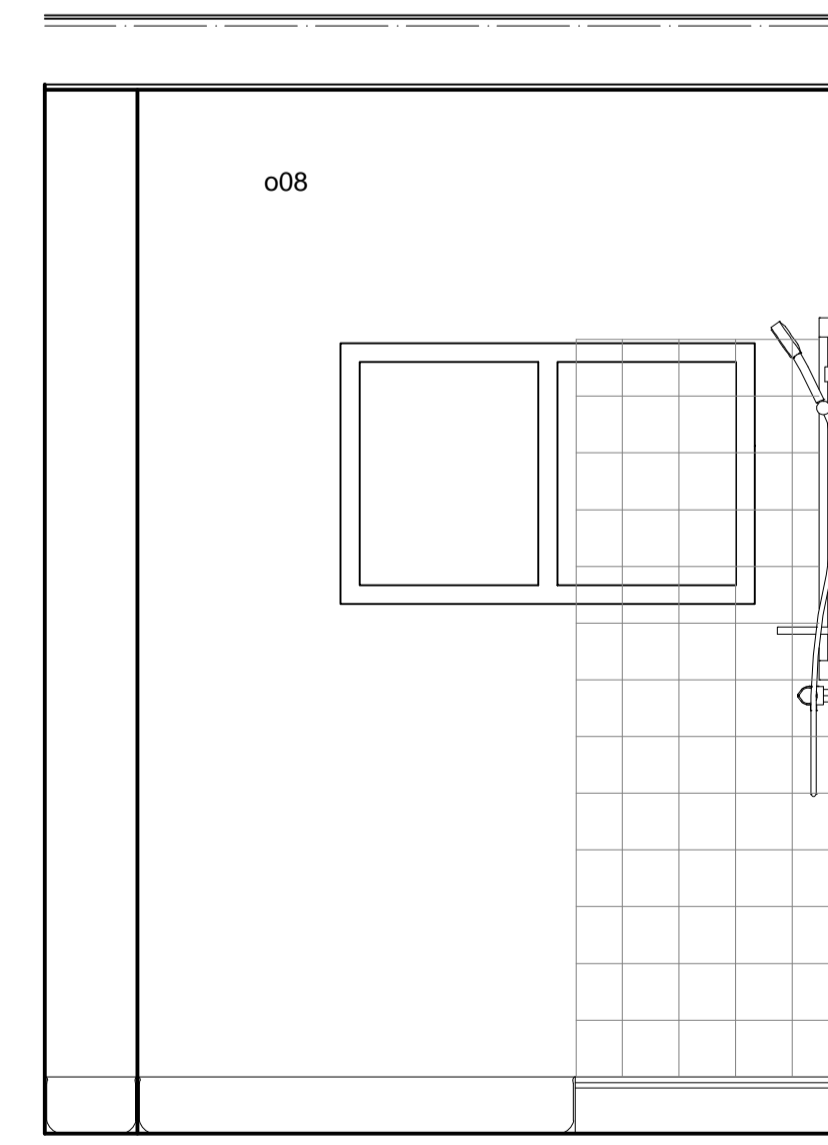
ELEVATION 01 1:20
A-OF-113



ELEVATION 02 1:20
A-OF-113



ELEVATION 03 1:20
A-OF-113



ELEVATION 04 1:20
A-OF-113

Tender Issue			
P2	REVISED BY: KK	DATE: 02.02.15	CHECKED BY: MM DATE: 02.02.15
PRELIMINARY ISSUE			
P1	REVISED BY: KK	DATE: 20.01.15	CHECKED BY: MM DATE: 20.01.15

SCALE BAR
 0mm 200 400 600 1200mm
 1:20

PURPOSE OF ISSUE
FOR TENDER

FILE STATUS CODE
D2

© COPYRIGHT NPS GROUP
 Ordnance Survey mapping reproduced by permission of ?????? ADD & Controller of HM Stationery Office Crown Copyright. A1

nps group
 Barron and Smith Architects
 3 Maltings Place
 169 Tower Bridge Road, London
 SE1 3JB
 TEL: 02079403456 FAX: 02079403460
 EMAIL: office@barronandsmith.co.uk
 Head Office:
 Lancaster House, 18 Central Avenue, St Andrews Business Park,
 Newark, Notts NG24 1RT. Tel: 01633 706050 Fax: 01633 706011
 Other Office locations can be found on our website: www.nps.co.uk

Property Design and Management Services
CLIENT
London Borough of Camden

PROJECT
New End Primary School

TITLE
**Condition and Suitability Works
 Toilet Refurbishment - Shower Room A-OF-113
 Ground Floor Plan**

SCALES	DATE	DRAWN	CHECKED
1:20 @ A1	Jan 2015	KK	MM

FILE / DRAWING NAME	PROJECT NR	DRAWING FIELDS	UNIQUE NR	REV CODE
13-1-1012	BAS-PL-A	387		P2