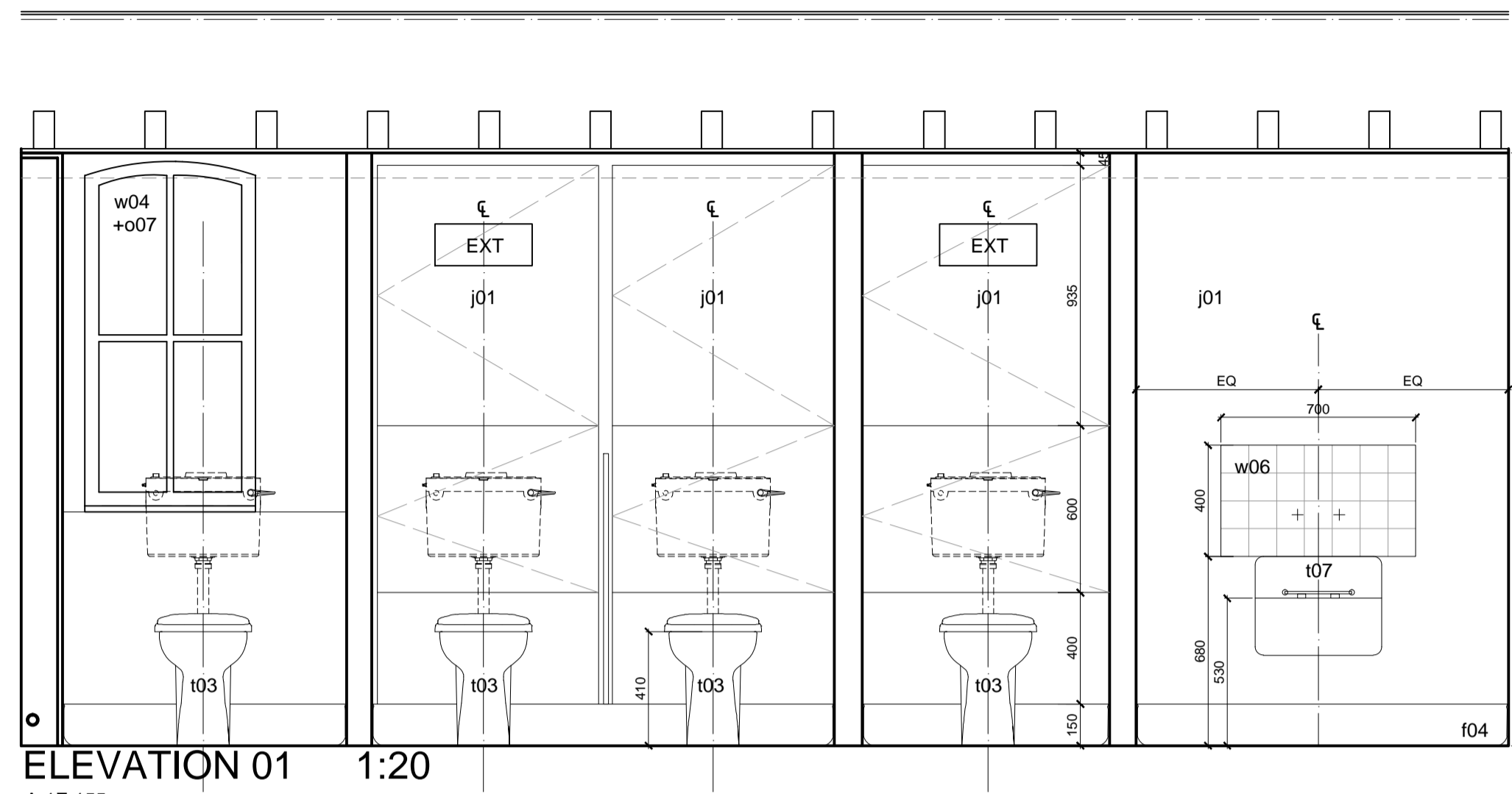
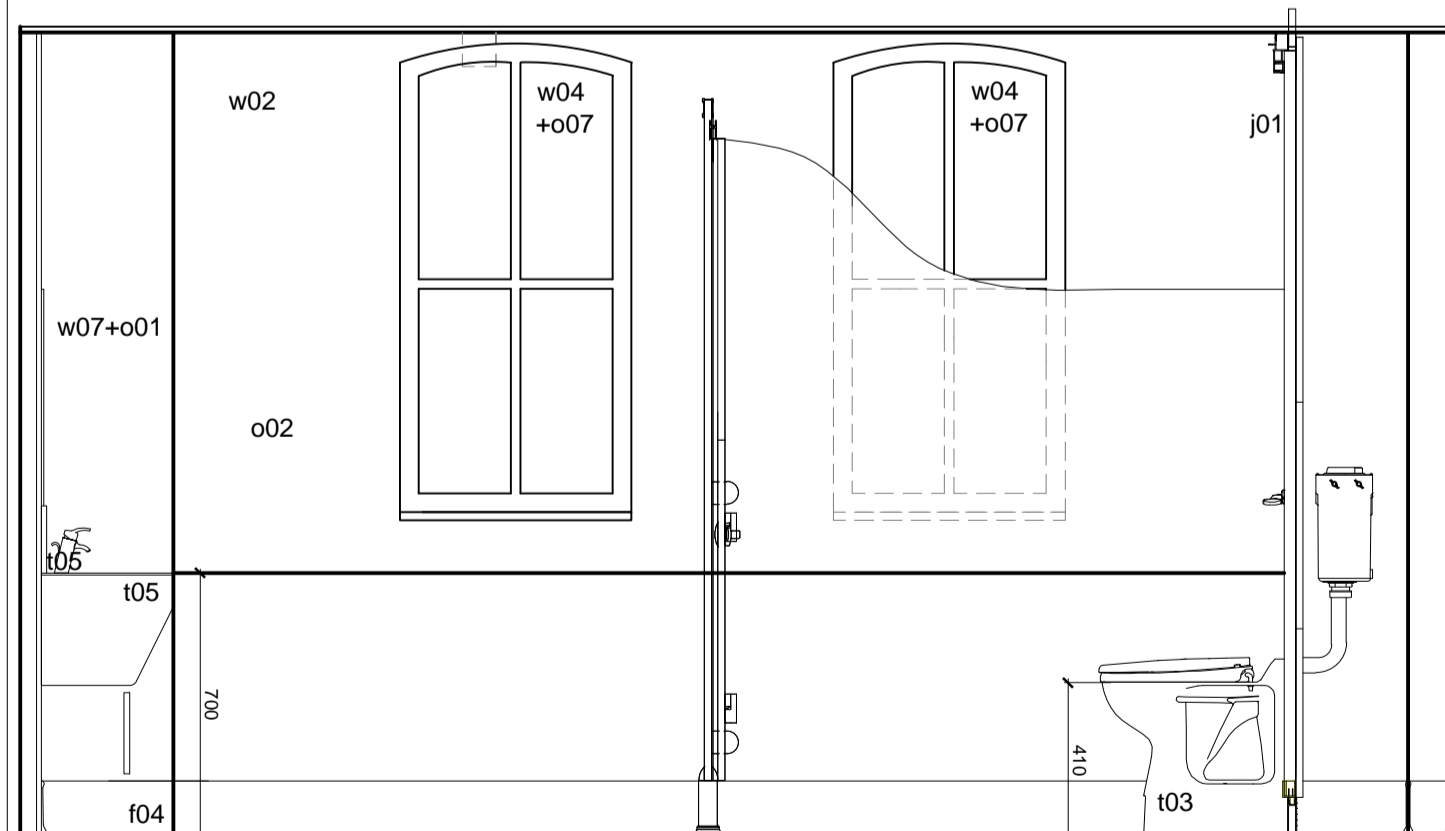


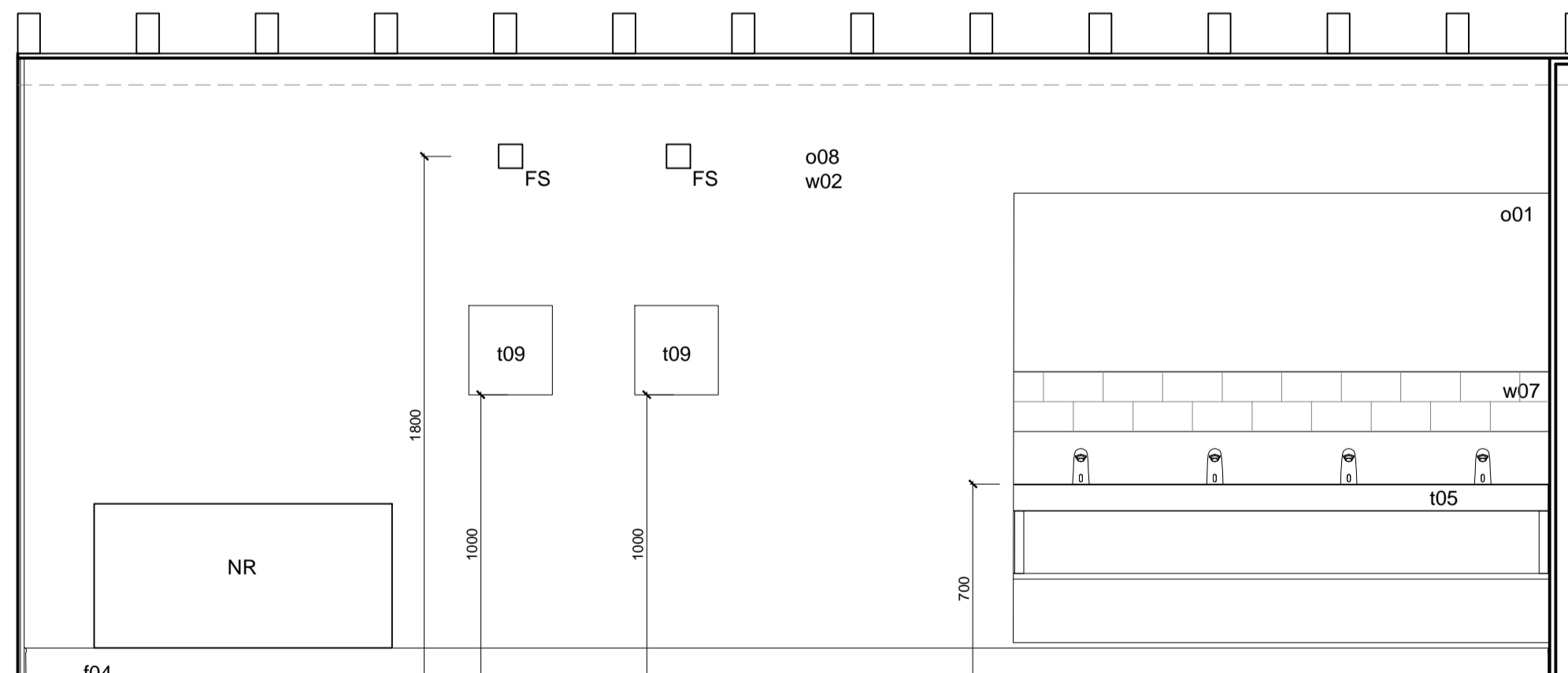
PLAN 1:20
A-1F-155



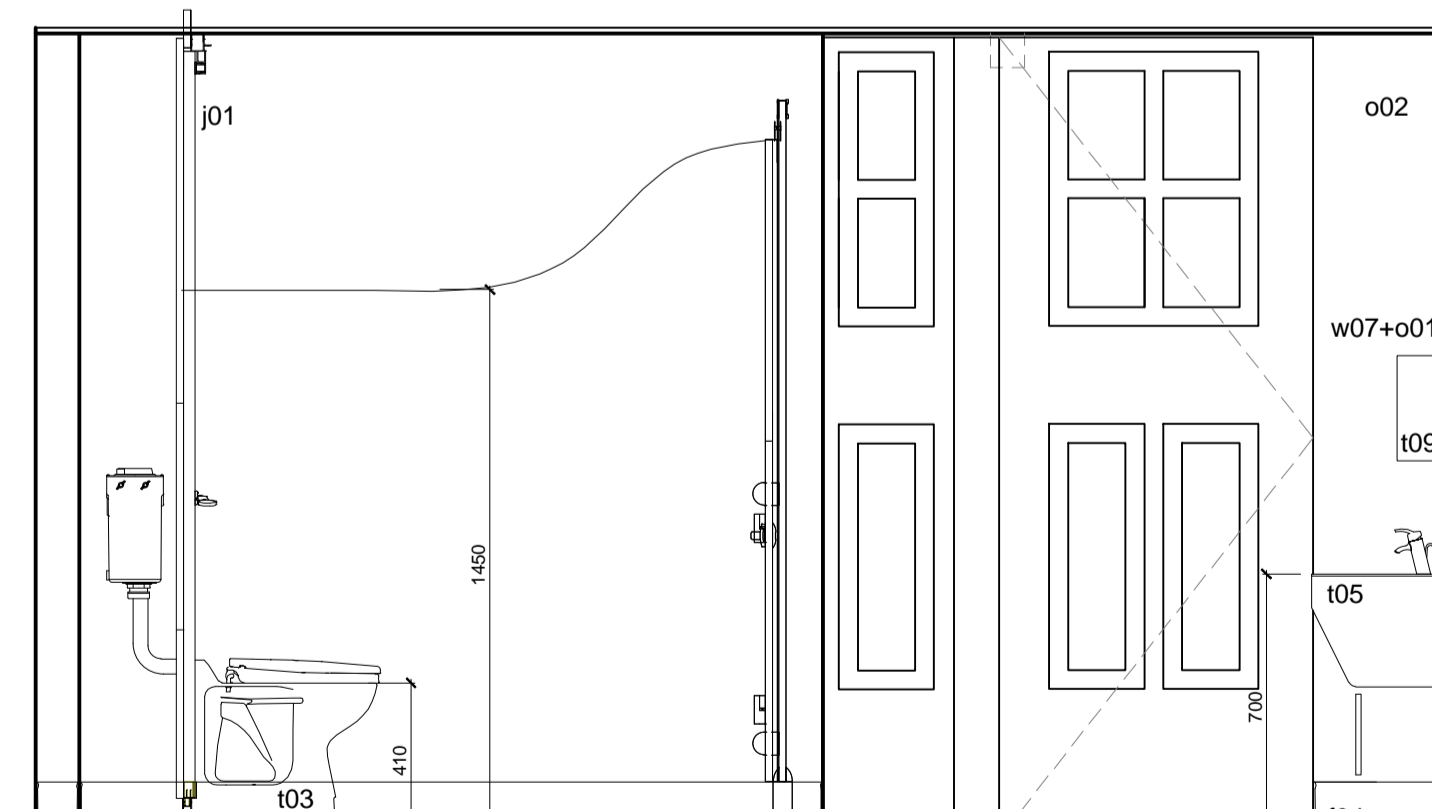
ELEVATION 01 1:20
A-1F-155



ELEVATION 02 1:20
A-1F-155

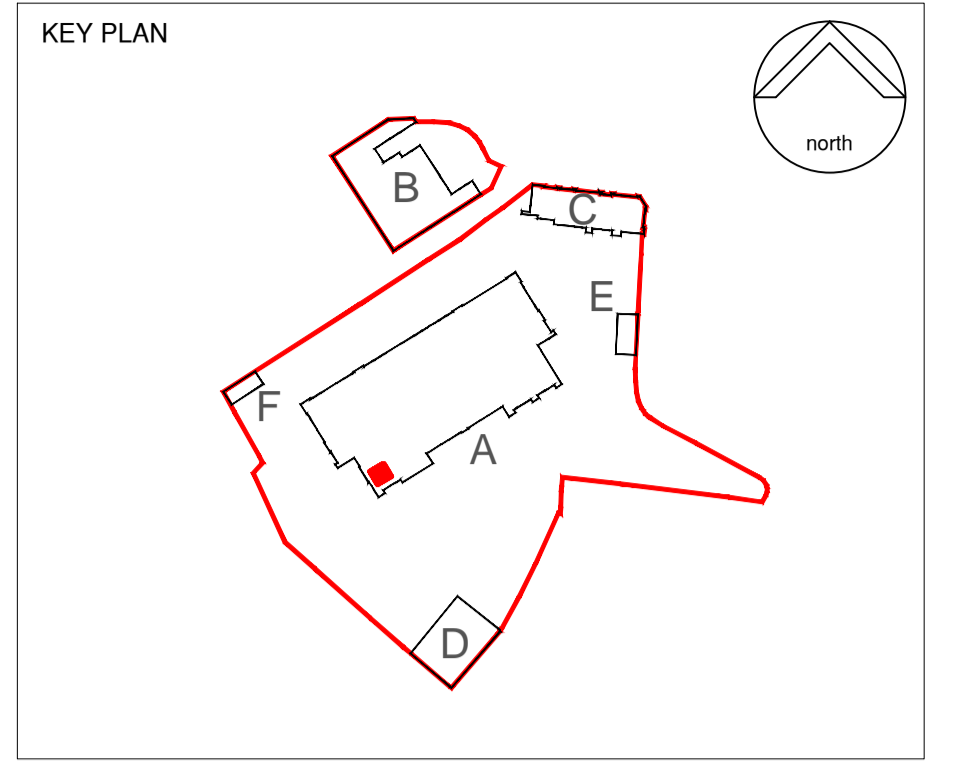


ELEVATION 03 1:20
A-1F-155



ELEVATION 04 1:20
A-1F-155

NOTES:
This drawing is produced for use in this project only and may not be used for any other purpose. NPS Property Consultants Ltd accept no liability for the use of this drawing other than the purpose for which it was intended in connection with this project as recorded on the title block fields 'Purpose for Issue' and 'File Status Code'.
This drawing may not be reproduced in any form without prior written agreement.
Do not scale from the drawing, use written dimensions only.



- SUITABILITY WORKS KEY**
WC REFURBISHMENT
- Walls**
w01 Eggshell vinyl paint on existing walls - NBS ref M60110
w02 Eggshell vinyl paint on new partition - NBS ref M60110
w03 PVC sheet splashback - NBS ref K32101
w04 Glazing to existing external windows - NBS ref L40230 or 231
w05 Existing wall surface retained/protected - no works required
w06 Ceramic tiling to wall - NBS ref M40111
w07 Ceramic tiling to wall - NBS ref M40111
- Floors**
f01 Non slip vinyl - NBS ref M50151
f02 Existing panel floor retained/protected - NBS ref M42110
f03 Threshold strip between floor finishes - NBS ref M50740
f04 Coated slating - NBS ref M50771
f05 Carpet tile - NBS ref M50147
- Ceilings**
c01 Moisture resistant plasterboard - NBS ref K10246 and M60111
c02 Demountable ceiling - NBS ref K40115
c03 Existing ceiling redecorated - NBS ref K10725 and M60111
c04 Plasterboard - NBS ref K10246 and M60111
- Joinery / Fixtures and Fittings**
j01 Accessible duct system - NBS ref K32150
j02 Cubicle system - NBS ref K32120A
j03 Ground floor door panel height: 1100mm (1250mm from FFL)
j04 First floor door panel height: 1300mm (1450mm from FFL)
j05 Second floor door panel height: 1500mm (1650mm from FFL)
j06 Cubicle stud partitions - NBS ref K10127
j07 Existing door refurbishes - NBS ref C51360 and 720
j08 New door - NBS ref L20410
j09 New skirting - NBS ref P20110 and M60110
j10 Refurbish existing timber glazed screen as diag 600, C51370, 720 and L40232
j11 New window sill - NBS ref P20112
j12 New timber glazed screen as diag 600 and L40231
- Others**
o01 Mirror - NBS ref N13438A
o02 Drying (Jubilee) - NBS ref K10165A
o03 FR60 stud partition with moisture resistant plasterboard and plywood lining - NBS ref K10125B
o04 Fire resistant rear duct - NBS ref K10125A
o05 FR 60 acoustic tile - NBS ref K10204A
o06 Boiling in to services - NBS ref P20170
o07 Opaque privacy film to glazing - NBS ref L40810
o08 Drying (MF) - NBS ref K10165B
o09 Timber stud packing - NBS ref K10205
- Suitability:**
s01 Boys urinals - NBS ref N13 / 315A
Refer to manufacturer's guidance for recommended mounting heights for children
s02 Pupils wets (BTW see height) - NBS ref N13 / 300A
s03 Pupils wets (BTW standard height) - NBS ref N13 / 300B
s04 Staff wets (CC) - NBS ref N13 / 300C
s05 Trough whb & taps - NBS ref N13 / 335A
s06 Adult wets - NBS ref N13 / 335C
s07 Cleaners sink & taps - NBS ref N13 / 331A
s08 Drinking fountain - supplied by client fitted by contractor
s09 Electric hand drier - NBS ref N13 / 472A
s10 Pupils shower - NBS ref N13 / 375
s11 Doc MWC pack - NBS ref N13 / 310
- Services**
SVP Soil and vent pipe as services engineers documents
FS Fused stud as services engineers documents
EXT Extract fan as services engineers documents
EIR Existing radiator retained as services engineers documents
RL Relocated existing radiator as services engineers documents
NR New radiator as services engineers documents
ATG Air transfer grille
FG Floor gully as services engineers documents
- All service runs are to be concealed within floors, doors, walls, ducts and windows unless where shown.
Contractors services installation and BWC drawings are to precisely confirm routing of all services and containment concealed to termination positions shown on internal room elevations.
To read in conjunction with:
• Architect's drawings and specification;
• Services and Structural Engineer's drawings and specification;
• ICT consultant's specification.
Contractor to provide method statement prior to commencement of demolition/stripping out works.
Setting out to be co-ordinated with finishes, service supplies and structure.
Dimensions shown to be verified on site prior to construction.

Tender Issue			
P2	REVISED BY: KK	DATE: 02.02.15	CHECKED BY: MM DATE: 02.02.15
PRELIMINARY ISSUE			
P1	REVISED BY: KK	DATE: 20.01.15	CHECKED BY: MM DATE: 20.01.15



PURPOSE OF ISSUE
FOR TENDER

FILE STATUS CODE
D2

© COPYRIGHT NPS GROUP
Ordnance Survey mapping reproduced by permission of ?????? ADD & Controller of HM Stationery Office Crown Copyright.

nps group
Property Design and Management Services

Barron and Smith Architects
3 Maltings Place
169 Tower Bridge Road, London
SE1 3JB
TEL: 02079403456 FAX: 02079403460
EMAIL: office@barronandsmith.co.uk

Head Office:
Lancaster House, 10 Central Avenue, St Andrews Business Park,
Norwich, NR7 9NR Tel: 01603 706000 Fax: 01603 706001
Other Office locations can be found on our website: www.nps.co.uk

CLIENT
London Borough of Camden

PROJECT
New End Primary School

TITLE
**Condition and Suitability Works
Toilet Refurbishment - Hall A-1F-155
First Floor Plan**

SCALES	DATE	DRAWN	CHECKED
1:20 @ A1	Jan 2015	KK	MM

FILE / DRAWING NAME	PROJECT NR	DRAWING FIELDS	UNIQUE NR	REV CODE
13-1-1012 BAS-PL-A	382			P2