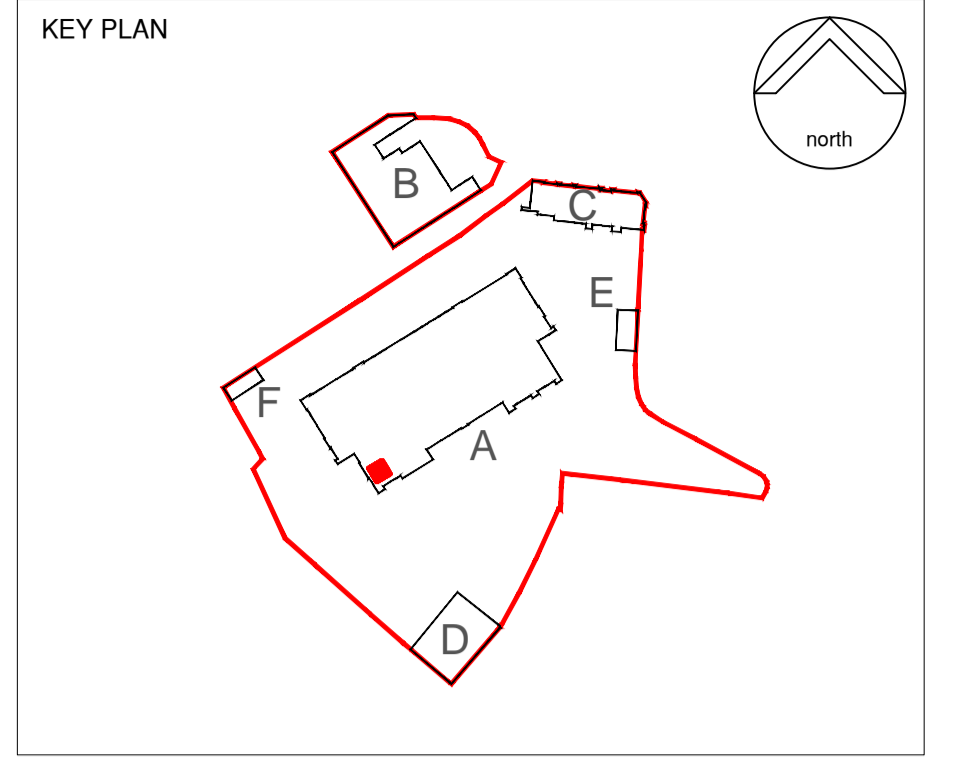
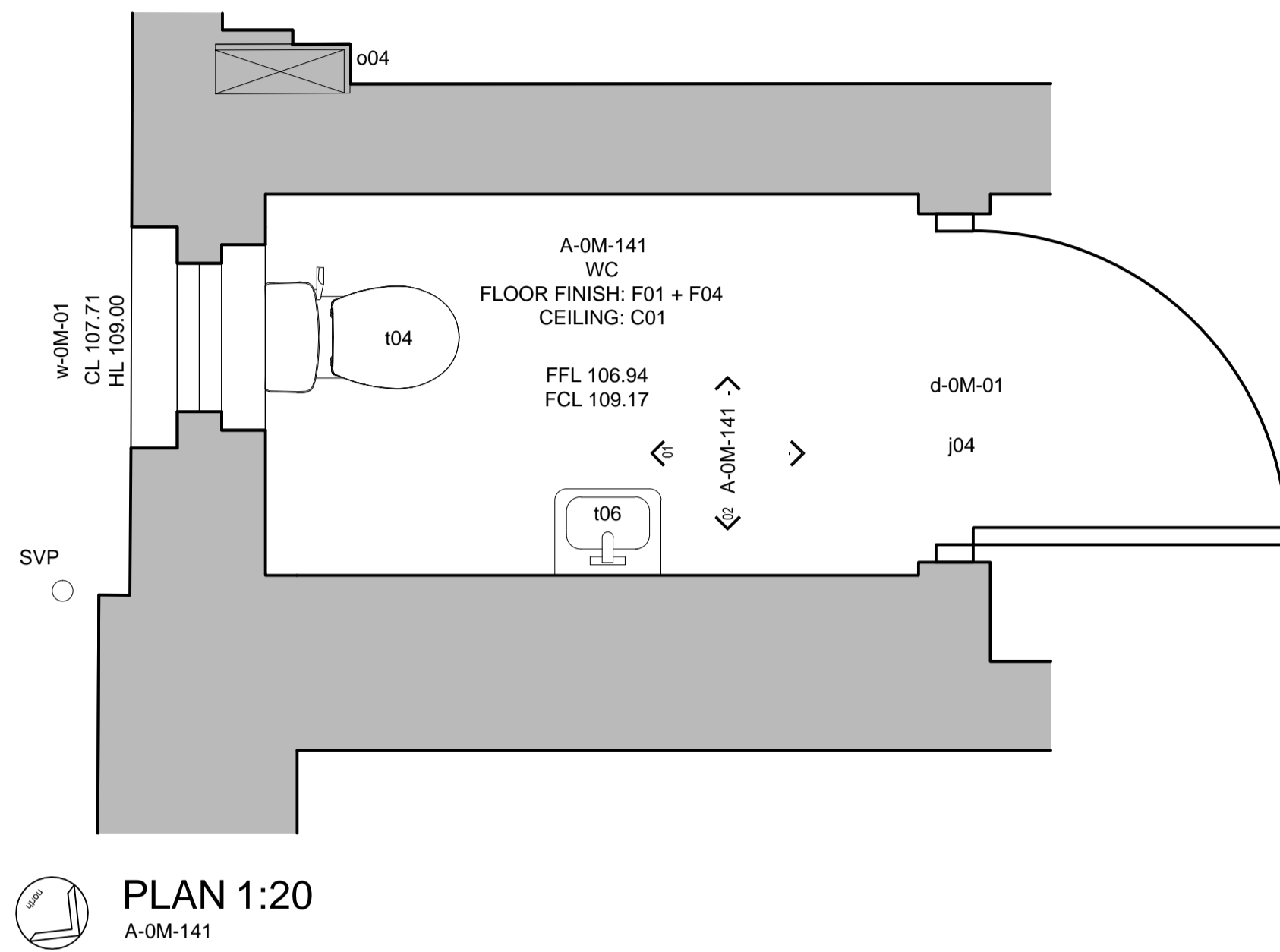


NOTES:
 This drawing is produced for use in this project only and may not be used for any other purpose. NPS Property Consultants Ltd accept no liability for the use of this drawing other than the purpose for which it was intended in connection with this project as recorded on the title block fields 'Purpose for Issue' and 'File Status Code'.
 This drawing may not be reproduced in any form without prior written agreement.
 Do not scale from the drawing, use written dimensions only.



SUITABILITY WORKS KEY
WC REFURBISHMENT

Walls:
 w01 Eggshell vinyl paint on existing walls - NBS ref M60110
 w02 Eggshell vinyl paint on new partition wall - NBS ref M60110
 w03 PVC sheet splashback - NBS ref K32151
 w04 Glazing to existing external windows - NBS ref L40230 or 231
 w05 Existing wall surface retained/protected - no works required
 w06 Ceramic tiling to wall - NBS ref M40110
 w07 Ceramic tiling to wall - NBS ref M40111

Floors:
 f01 Non slip vinyl - NBS ref M60151
 f02 Existing parquet floor retained / protected - NBS ref M42110
 f03 Threshold strip between floor finishes - NBS ref M50740
 f04 Covered skirting - NBS ref M50771
 f05 Carpet tile - NBS ref M50147

Ceilings:
 c01 Moisture resistant plasterboard - NBS ref K10246 and M60111
 c02 Demountable ceiling - NBS ref K40115
 c03 Existing ceiling redecorated - NBS ref K10725 and M60111
 c04 Plasterboard - NBS ref K10245 and M60111

Joinery / Fixtures and Fittings:
 j01 Accessible duct system - NBS ref K32150
 j02 Cubicle system - NBS ref K32120A
 j03 Ground floor door panel height: 1100mm (1260mm from FFL)
 First floor door panel height: 1300mm (1450mm from FFL)
 Second floor door panel height: 1500mm (1650mm from FFL)
 Cubicle stud partitions - NBS ref K10127
 j04 Existing door refurbished - NBS ref C51360 and 720
 j05 New door - NBS ref L20410
 j06 New skirting - NBS ref P20110 and M60 / 130
 j07 Refurbish existing timber glazed screen as per 600, C51370, 720 and L40232
 j08 New window sill - NBS ref P20112
 j09 New timber glazed screen as per 600 and L40231

Others:
 o01 Mirror - NBS ref N13438A
 o02 Drying (Adhesive) - NBS ref K10185A
 o03 FR90 stud partition with moisture resistant plasterboard and plywood lining - NBS ref K10125B
 o04 Fire resistant riser duct - NBS ref K10125A
 o05 FR 60 acoustic infill - NBS ref K10205A
 o06 Boxing in to services - NBS ref P20170
 o07 Dimpled privacy film to glazing - NBS ref L404610
 o08 Drying (MF) - NBS ref K10165B
 o09 Timber stud packing - NBS ref K10205

Sanitaryware:
 s01 Boys urinals - NBS ref N13 / 315A
 s02 Refer to manufacturer's guidance for recommended mounting heights for children
 s03 Pupils wcs (BTW low height) - NBS ref N13 / 300A
 s04 Pupils wcs (BTW standard height) - NBS ref N13 / 300B
 s05 Staff wcs (CC) - NBS ref N13 / 300C
 s06 Trough urinal & tap - NBS ref N13 / 335A
 s07 Adult urinal - NBS ref N13 / 335C
 s08 Cleaners sink & tap - NBS ref N13 / 331A
 s09 Drinking fountain - supplied by client fitted by contractor
 s10 Electric hand drier - NBS ref N13 / 472A
 s11 Pupils shower - NBS ref N13 / 375
 s12 DoM W/C pack - NBS ref N13 / 310

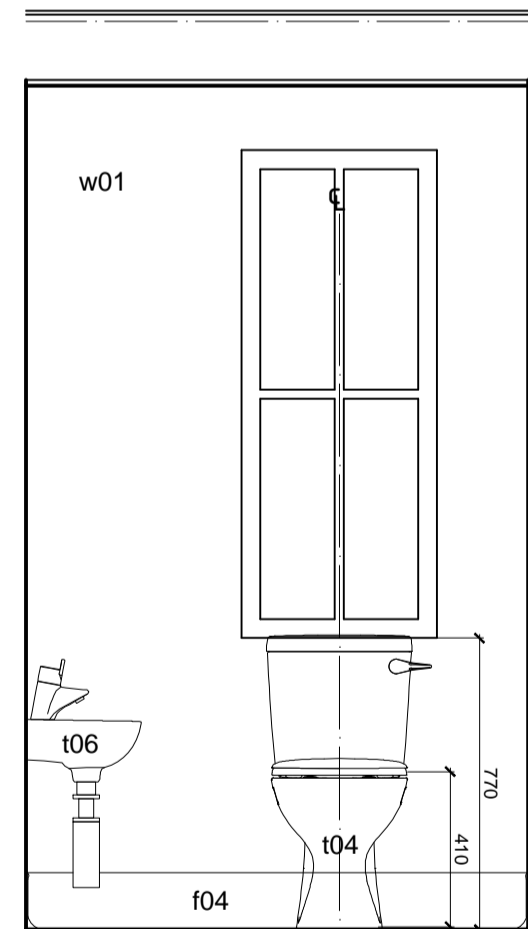
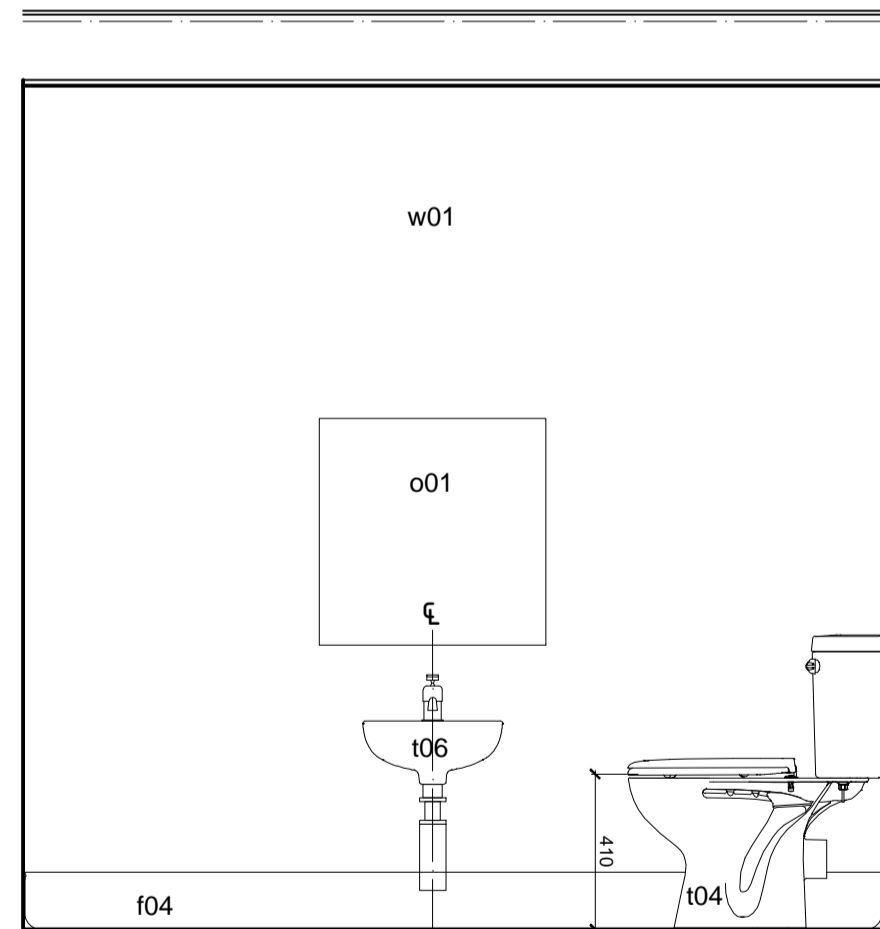
Services:
 SVP Soil and vent pipe as services engineers documents
 FS Flued spur as services engineers documents
 EXT Extract fan as services engineers documents
 S Fire alarm sounder as services engineers documents
 ER Existing radiator retained as services engineers documents
 RL Relocated existing radiator as services engineers documents
 NR New radiator as services engineers documents
 ATG Air transfer grille
 FG Floor gully as services engineers documents

All service runs are to be concealed within floors, doors, walls, ducts and windows unless where shown.

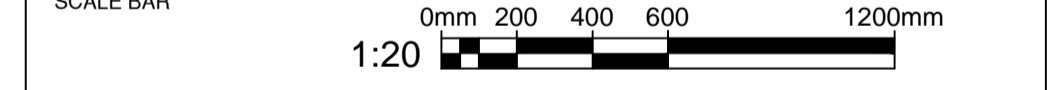
Contractors services installation and BWIC drawings are to precisely confirm routing of all services and containment concealed to termination positions shown on internal room elevations.

To read in conjunction with:
 • Architect's drawings and specification;
 • Services and Structural Engineer's drawings and specification;
 • ICI consultant's specification.

Contractor to provide method statement prior to commencement of demolition/stripping out works.
 Setting out to be co-ordinated with finishes, service supplies and structure.
 Dimensions shown to be verified on site prior to construction.



Tender Issue			
P2	REVISED BY: KK	DATE: 02.02.15	CHECKED BY: MM DATE: 02.02.15
PRELIMINARY ISSUE			
P1	REVISED BY: KK	DATE: 20.01.15	CHECKED BY: MM DATE: 20.01.15



PURPOSE OF ISSUE
FOR TENDER

FILE STATUS CODE
D2

© COPYRIGHT NPS GROUP
 Ordnance Survey mapping reproduced by permission of ?????? ADD & Controller of HM Stationery Office Crown Copyright.

nps group

Barron and Smith Architects
 3 Maltings Place
 169 Tower Bridge Road, London
 SE1 3JF
 TEL: 02079403456 FAX: 02079403460
 EMAIL: office@barronandsmith.co.uk

Head Office:
 Lancaster House, 18 Central Avenue, St Andrews Business Park,
 Newark, Notts NG24 2ER Tel: 01632 705000 Fax: 01632 705011

Property Design and Management Services
 Other Office locations can be found on our website : www.nps.co.uk

CLIENT
London Borough of Camden

PROJECT
New End Primary School

TITLE
Condition and Suitability Works
Toilet Refurbishment - WC A-0M-141
Ground Floor Mezz Plan

SCALES	DATE	DRAWN	CHECKED
1:20 @ A1	Jan 2015	KK	MM

FILE / DRAWING NAME	DRAWING NO	UNIQUE NR	REV CODE
13-1-1012	BAS-PL-A	388	P2