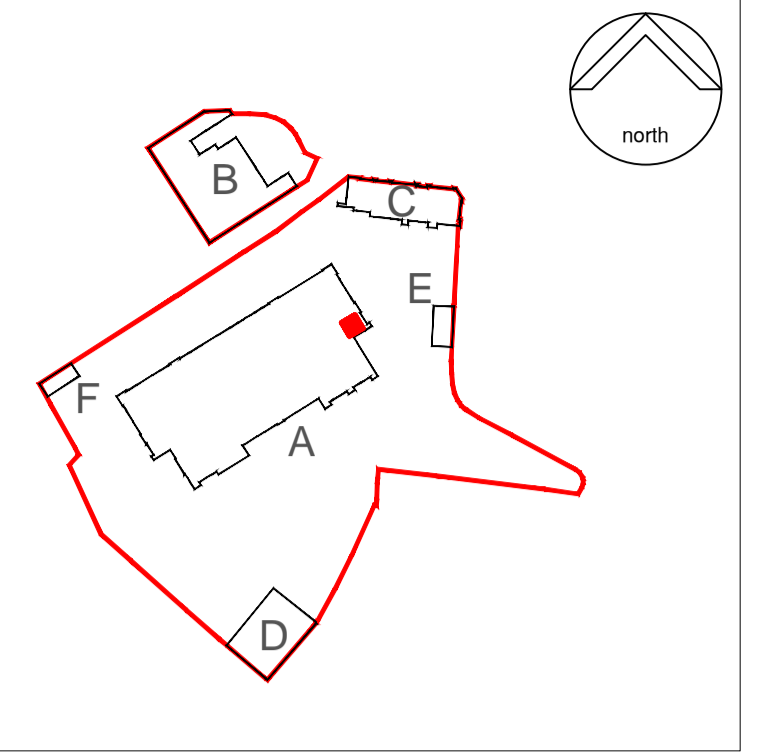


NOTES:

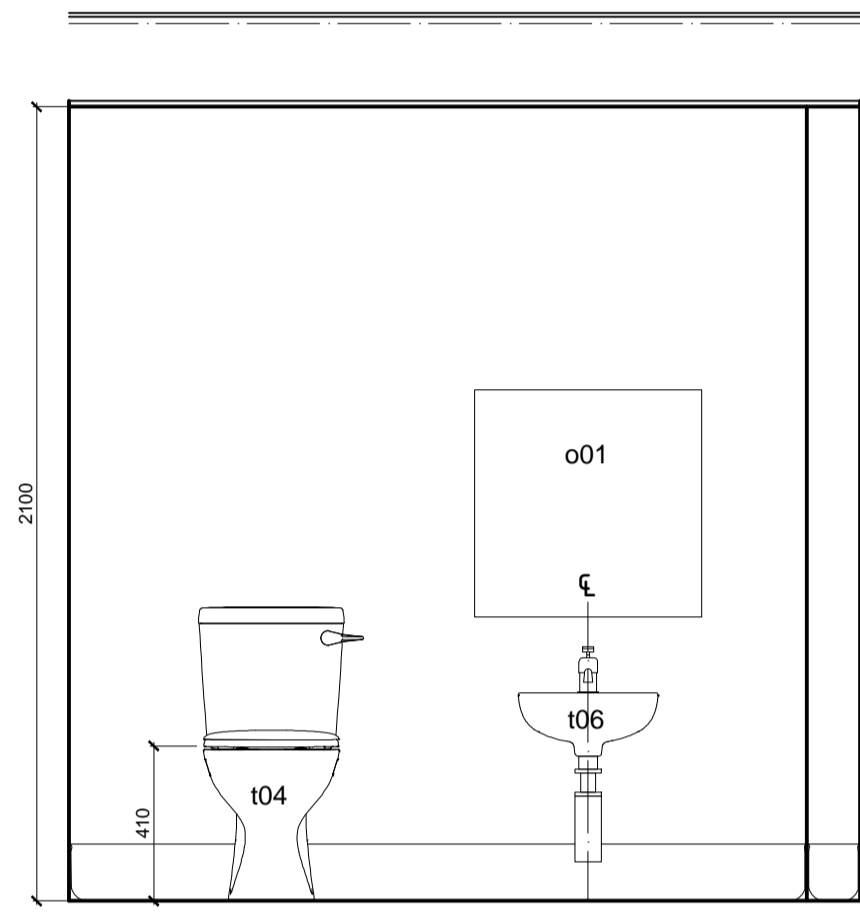
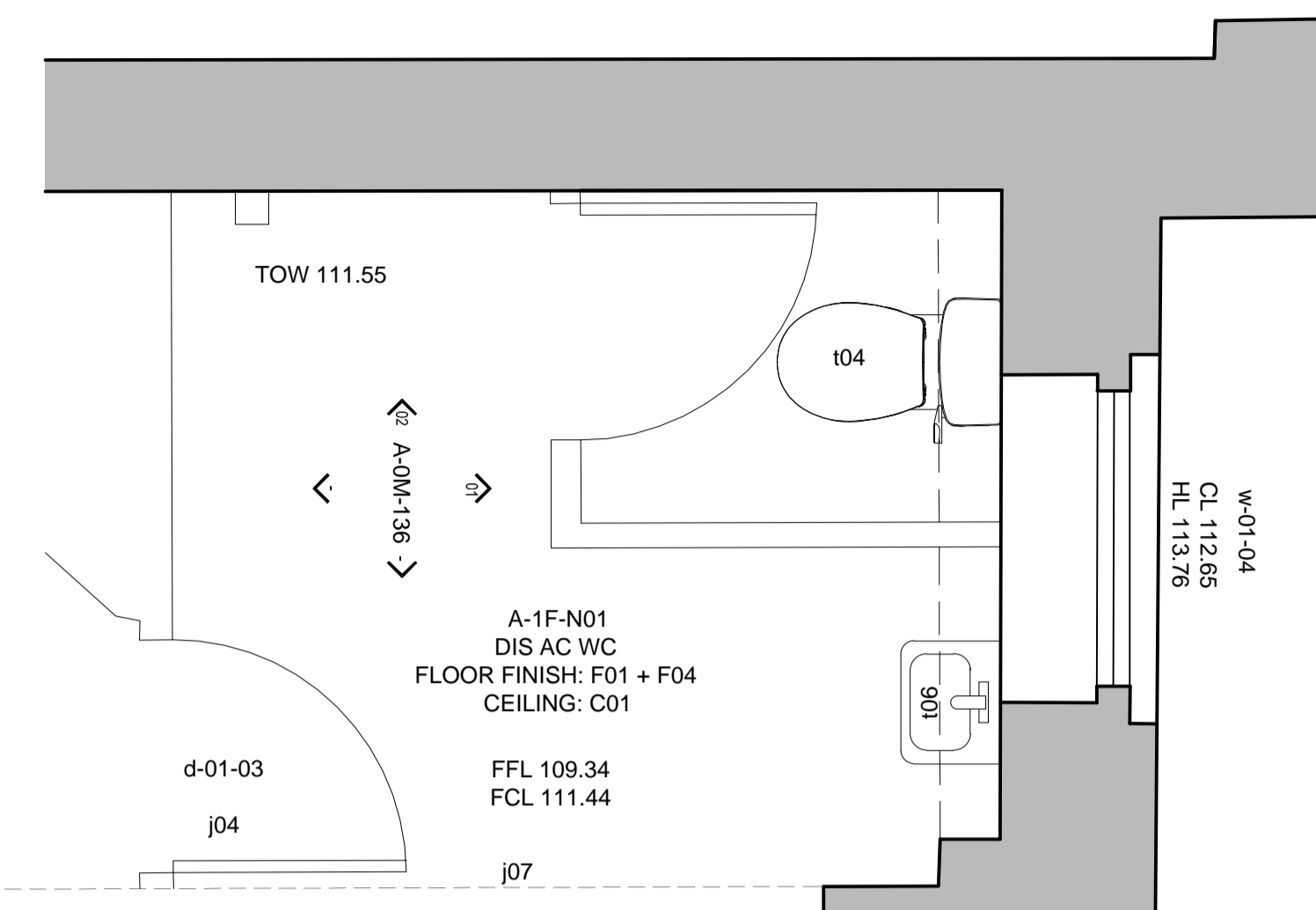
This drawing is produced for use in this project only and may not be used for any other purpose. NPS Property Consultants Ltd accept no liability for the use of this drawing other than the purpose for which it was intended in connection with this project as recorded on the title block fields 'Purpose for Issue' and 'File Status Code'.
 This drawing may not be reproduced in any form without prior written agreement.
 Do not scale from the drawing, use written dimensions only.

KEY PLAN

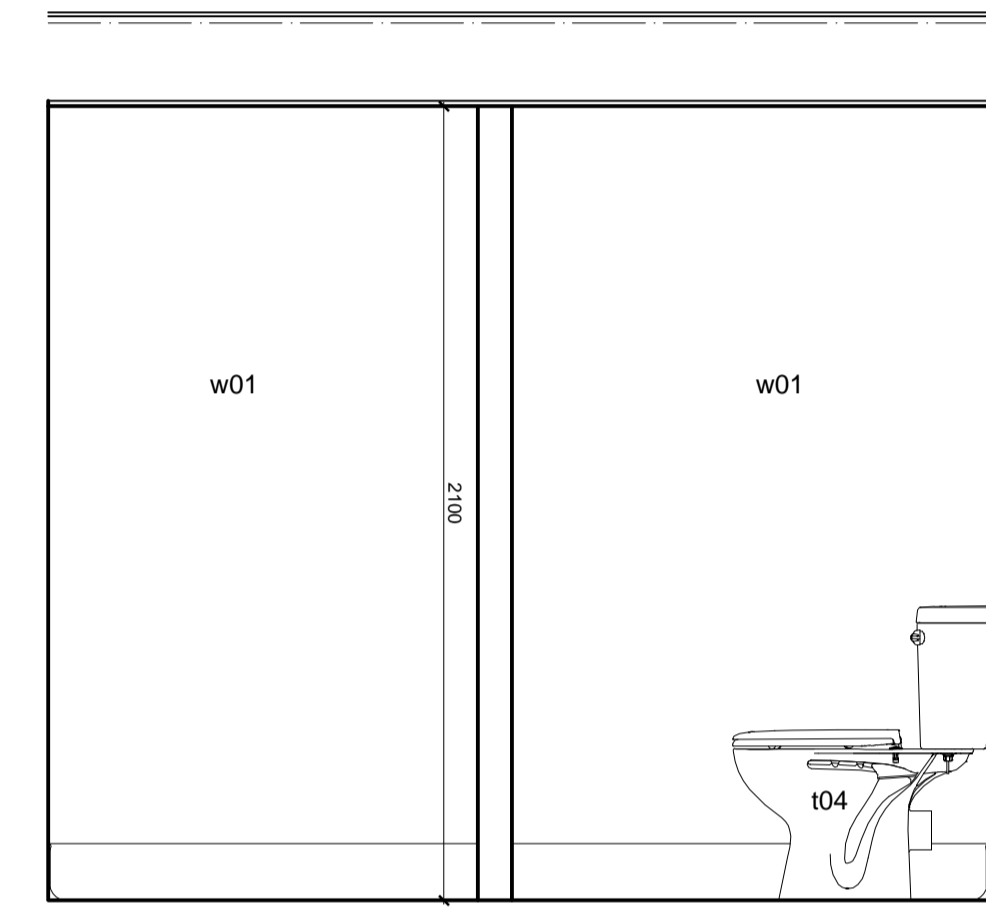


**SUITABILITY WORKS KEY
WC REFURBISHMENT**

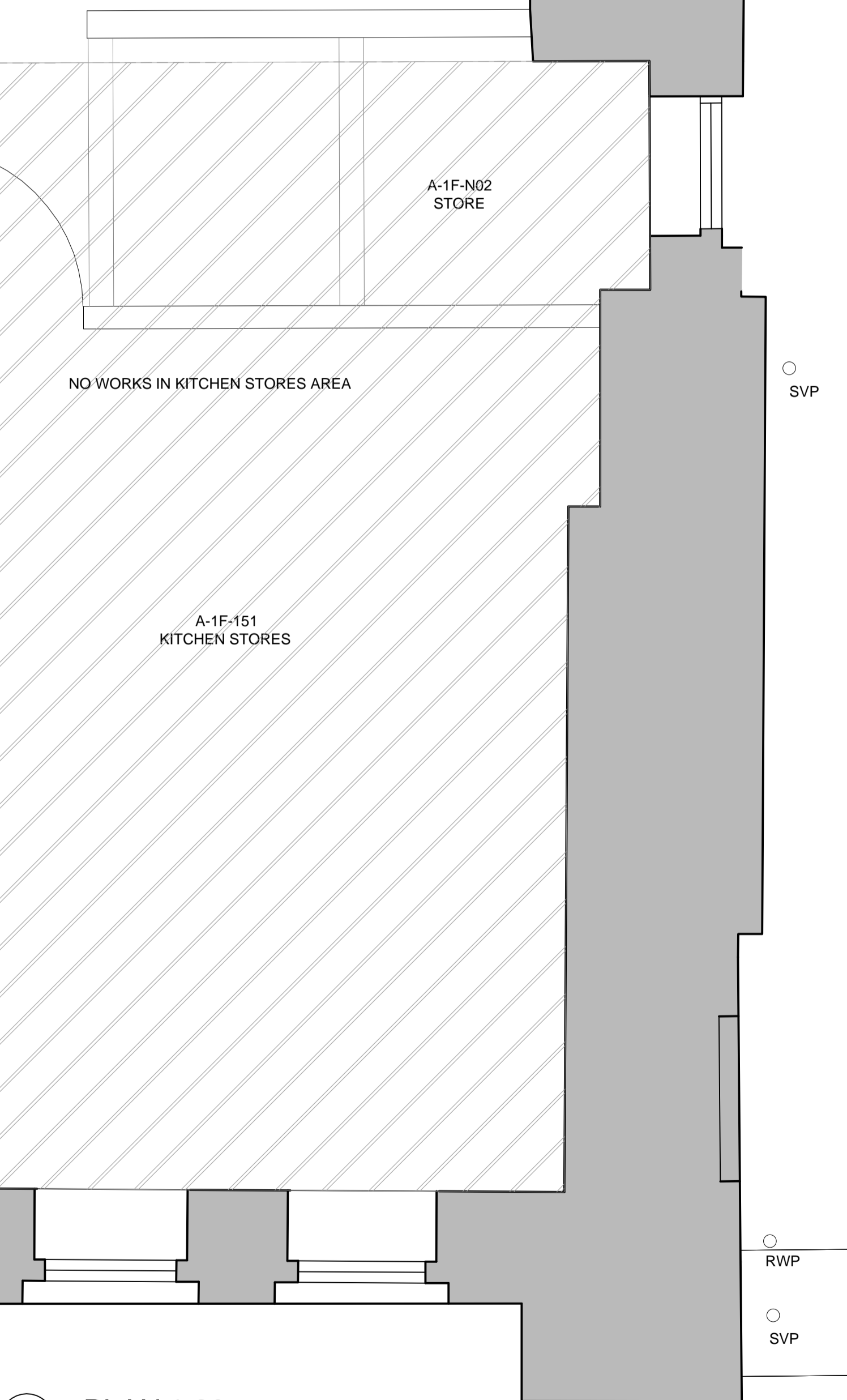
- Walls**
- w01 Eggshell vinyl paint on existing walls - NBS ref M60110
 - w02 Eggshell vinyl paint on new partition wall - NBS ref M60110
 - w03 PVC sheet splashback - NBS ref K32/151
 - w04 Glazing to existing external windows - NBS ref L40220 or 231
 - w05 Existing wall surface retained/protected - no works required
 - w06 Ceramic tiling to wall - NBS ref M60110
 - w07 Ceramic tiling to wall - NBS ref M60111
- Floors**
- f01 Non slip vinyl - NBS ref M50151
 - f02 Existing parquet floor retained / protected - NBS ref M42/110
 - f03 Threshold strip between floor finishes - NBS ref M50/740
 - f04 Coveed skirting - NBS ref M50/771
 - f05 Carpet tile - NBS ref M50/147
- Ceilings**
- c01 Moisture resistant plasterboard - NBS ref K10/246 and M60111
 - c02 Demountable ceiling - NBS ref M60115
 - c03 Existing ceiling redecorated - NBS ref K10/725 and M60111
 - c04 Plasterboard - NBS ref K10/245 and M60111
- Joinery / Fixtures and Fittings**
- j01 Accessible duct system - NBS ref K32/150
 - j02 Cubicle system - NBS ref K32/120A
 - Ground floor door panel height: 1100mm (1250mm from FFL)
 - First floor door panel height: 1300mm (1450mm from FFL)
 - Second floor door panel height: 1500mm (1650mm from FFL)
 - j03 Cubicle stud partitions - NBS ref K10/127
 - j04 Existing door refurbished - NBS ref C51/369 and 720
 - j05 New door - NBS ref L20/410
 - j06 New starting - NBS ref P20/110 and M60 / 130
 - j07 Refurbish existing timber glazed screen as they 600, C51/370, 720 and L40232
 - j08 New window cill - NBS ref P20/112
 - j09 New timber glazed screen as they 600 and L40231
- Others**
- o01 Mirror - NBS ref N13/438A
 - o02 Drying (A)shelving - NBS ref N10/185A
 - o03 FR60 stud partition with moisture resistant plasterboard and plywood lining - NBS ref K10/125B
 - o04 Fire resistant riser duct - NBS ref K10/125A
 - o05 FR 60 acoustic rill - NBS ref K10/205A
 - o06 Boxing in to services - NBS ref P20/170
 - o07 Opaque privacy film to glazing - NBS ref L40/610
 - o08 Drying (MF) - NBS ref K10/85B
 - o09 Timber stud packing - NBS ref K10/205
- Sanitaryware**
- s01 Boys urinals - NBS ref N13 / 315A
 - s02 Refer to manufacturer's guidance for recommended mounting heights for children
 - s03 Pupils w/c (BTW low height) - NBS ref N13 / 300A
 - s04 Pupils w/c (BTW standard height) - NBS ref N13 / 300B
 - s05 Staff w/c (C) - NBS ref N13 / 300C
 - s06 Trough w/h & taps - NBS ref N13 / 335A
 - s07 Adult w/h - NBS ref N13 / 335C
 - s08 Cleaners sink & taps - NBS ref N13 / 331A
 - s09 Drinking fountain - supplied by client fitted by contractor
 - s10 Electric hand drier - NBS ref N13 / 472A
 - s11 Pupils shower - NBS ref N13 / 375
 - s12 Doc M/WC pack - NBS ref N13 / 310
- Services**
- SVP Soil and vent pipe as services engineers documents
 - FS Fused spur as services engineers documents
 - EX Extract fan as services engineers documents
 - S Fire alarm sounder as services engineers documents
 - ER Existing radiator retained as services engineers documents
 - RL Relocated existing radiator as services engineers documents
 - NR New radiator as services engineers documents
 - ATG Air transfer grille
 - FG Floor gully as services engineers documents
- All service runs are to be concealed within floors, doors, walls, ducts and windows unless where shown.
- Contractors services installation and B/WC drawings are to precisely confirm routing of all services and containment concealed to termination positions shown on internal room elevations.
- To read in conjunction with:
- Architect's drawings and specification;
 - Services and Structural Engineers' drawings and specification;
 - ICT consultant's specification.
- Contractor to provide method statement prior to commencement of demolition/stripping out works.
 Setting out to be co-ordinated with finishes, service supplies and structure.
 Dimensions shown to be verified on site prior to construction.



ELEVATION 01 1:20
A-1F-N01



ELEVATION 02 1:20
A-1F-N01



PLAN 1:20
A-1F-N01
A-1F-N02
A-1F-151

Tender Issue			
P2	REVISED BY: KK	DATE: 02.02.15	CHECKED BY: MM DATE: 02.02.15
PRELIMINARY ISSUE			
P1	REVISED BY: KK	DATE: 20.01.15	CHECKED BY: MM DATE: 20.01.15



PURPOSE OF ISSUE
FOR TENDER

FILE STATUS CODE
D2

© COPYRIGHT NPS GROUP
Ordnance Survey mapping reproduced by permission of ?????? ADD & Controller of HM Stationery Office Crown Copyright.

nps group

Barron and Smith Architects
 3 Maltings Place
 169 Tower Bridge Road, London
 SE1 3JB
 TEL: 02079403456 FAX: 02079403456
 EMAIL: office@barronandsmith.co.uk

Head Office:
 Lancaster House, 18 Central Avenue, St Andrews Business Park,
 Newark, Notts NG24 1JL Tel: 01633 705000 Fax: 01633 705001

Property Design and Management Services
 Other Office locations can be found on our website : www.nps.co.uk

CLIENT
London Borough of Camden

PROJECT
New End Primary School

TITLE
**Condition and Suitability Works
Toilet Refurbishment - DIS AC WC A-1F-N01
First Floor Plan**

SCALES	DATE	DRAWN	CHECKED
1:20 @ A1	Jan 2015	KK	MM

FILE / DRAWING NAME	PROJECT NR	DRAWING FIELDS	UNIQUE NR	REV CODE
	13-1-1012	BAS-PL-A	390	P2