

526460E

526470E

526480E

526490E

526500E

185930N

185930N

185920N

185920N

185910N

185910N

185900N

185900N

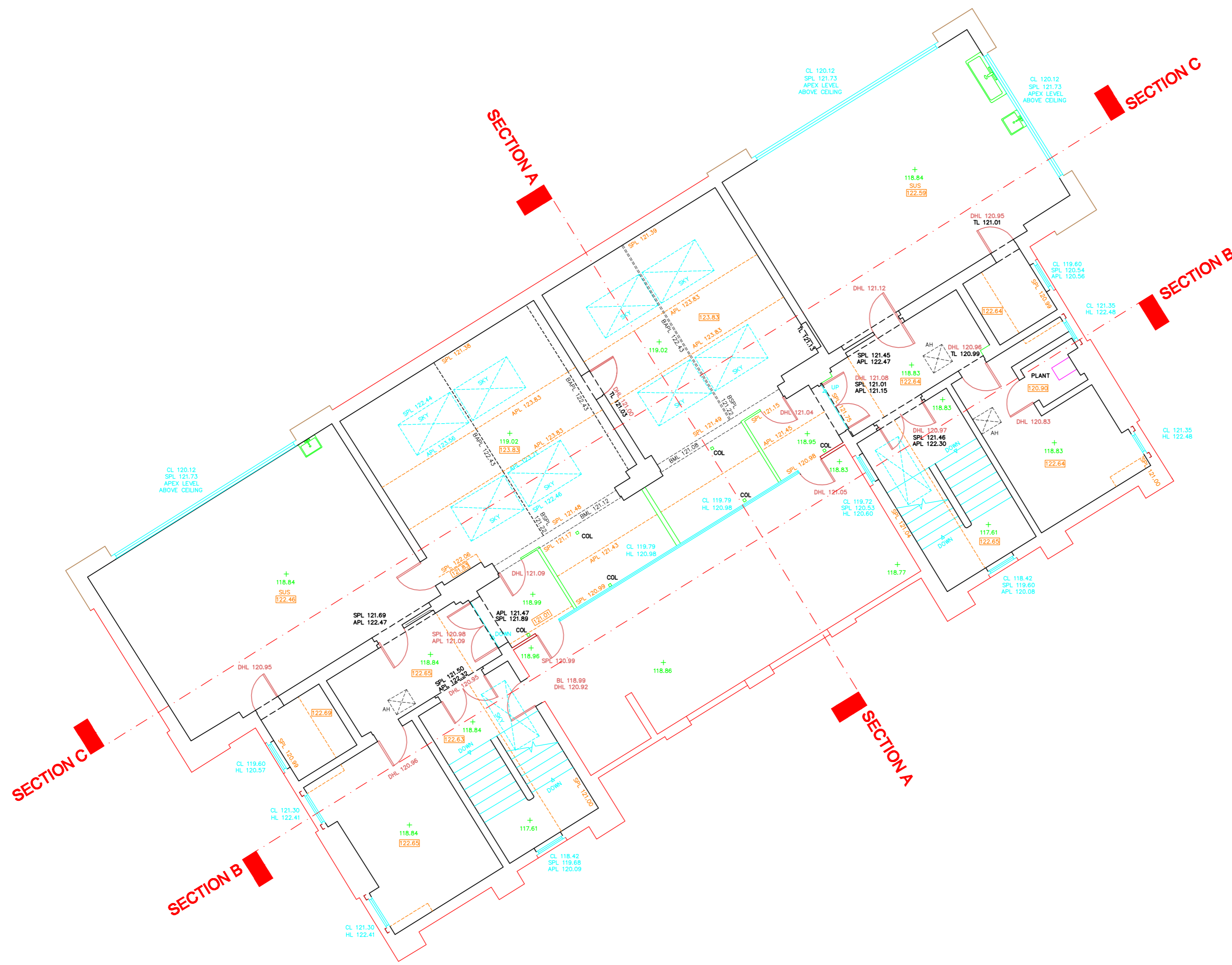
526460E

526470E

526480E

526490E

526500E



**Notes**  
 This drawing and the information contained therein is issued in confidence and is the copyright of Met Geo Environmental Limited. Disclosure of this information to Third Parties and unauthorised copying or replication of this data without approval is forbidden.

**Grid** : OS National Grid (Approximate)  
 Derived by fitting surveyed points to coordinates from OS digital information.

**Datum** : Related to Ordnance Survey benchmark. Located on White Bear Public House, New End.  
 Value = 108.238 m A.O.D



**KEY**

<b>CEILING</b>	<b>WINDOWS</b>
2.22 FLOOR TO CEILING HEIGHT	F-C 1.43 FLOOR TO CILL
32.98 CEILING LEVEL	C-H 2.29 CILL TO HEAD
APL 32.98 APEX LEVEL	C-SPR 1.43 CILL TO SPRING
SPL 32.98 SPRING LEVEL	C-APX 2.29 CILL TO APEX
APX 2.98 FLOOR TO APEX	CL 22.84 CILL LEVEL
SPR 2.02 FLOOR TO SPRING	HL 24.76 HEAD LEVEL
SUS SUSPENDED CEILING	
<b>BEAMS</b>	<b>FLOORS</b>
BMH 3.52 FLOOR TO U/S OF BEAM	+116.12 FLOOR LEVEL
BML 32.16 LEVEL TO U/S OF BEAM	
HAPL 33.26 LEVEL TO APEX OF BEAM HAUNCH	<b>RECESSES</b>
HSPL 32.95 LEVEL TO SPRING OF BEAM HAUNCH	BH 0.86 FLOOR TO RECESS BASE
PUR 32.95 LEVEL TO U/S OF PURLIN	BL 32.22 RECESS BASE LEVEL
	TH 3.35 BASE TO TOP OF RECESS
	TL 35.68 U/S OF RECESS LEVEL
<b>DOORS</b>	<b>OTHER</b>
DH 2.67 FLOOR TO U/S OF DOOR FRAME	TOW 31.23 TOP OF WALL LEVEL
DHL 33.45 U/S OF DOOR FRAME LEVEL	AH ACCESS HATCH

Rev	Date	Drawn	Description	Check
-	-	-	-	-

**Southgate House**  
 Pontefract Road T: +44 [0] 1132 008 900  
 Stourton F: +44 [0] 1132 008 901  
 Leeds E: admin@metgeoenvironmental.com  
 West Yorkshire W: www.metgeoenvironmental.com  
 LS10 1SW

**Client**  
 BARRON AND SMITH

**Site**  
 NEW END PRIMARY SCHOOL  
 STREATLEY PLACE, LONDON

**Title**  
 BUILDING SURVEY  
 THIRD FLOOR PLAN

Surveyed	WS, TT & IG	Drawn	VB, IG
Chk	-	Date	07/03/2013
Scale	[A2 Sheet] 1/100	DWG Ref	13259-100-3_3
Job No	13259-100-3	Status	FINAL
		Rev	∅