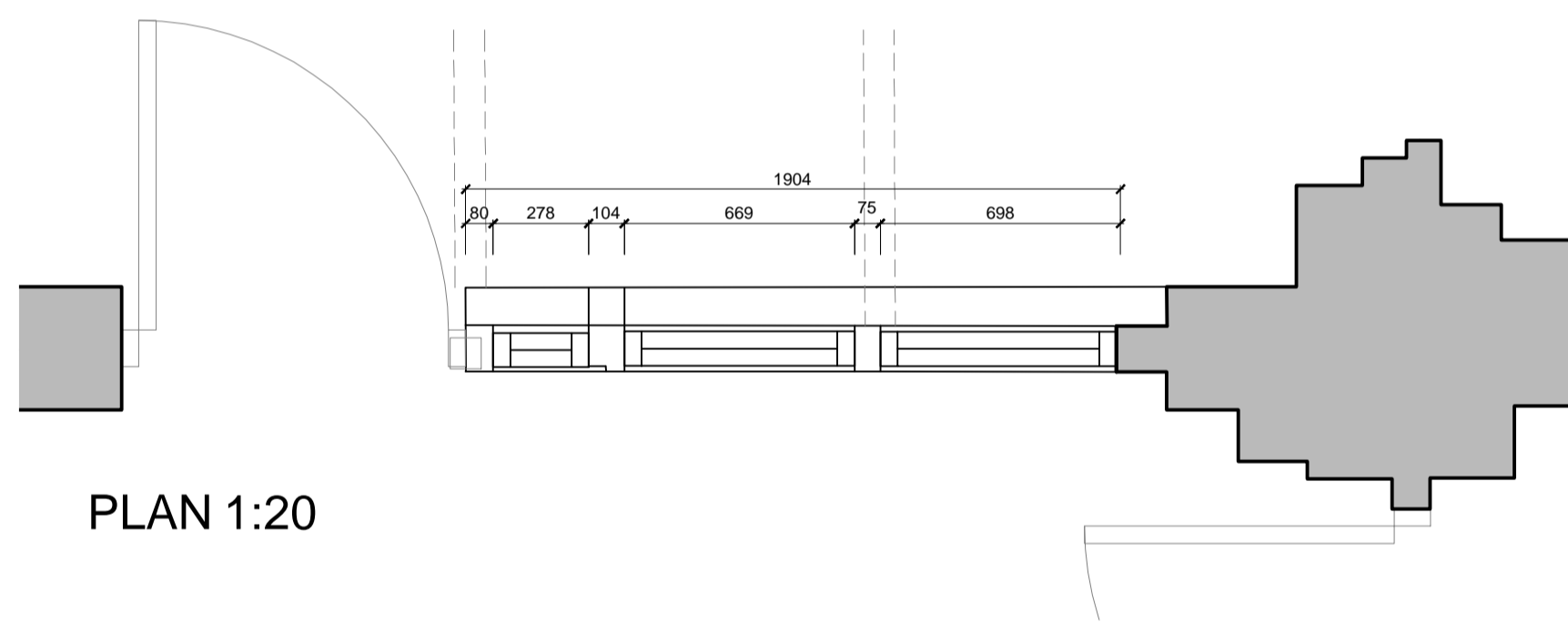
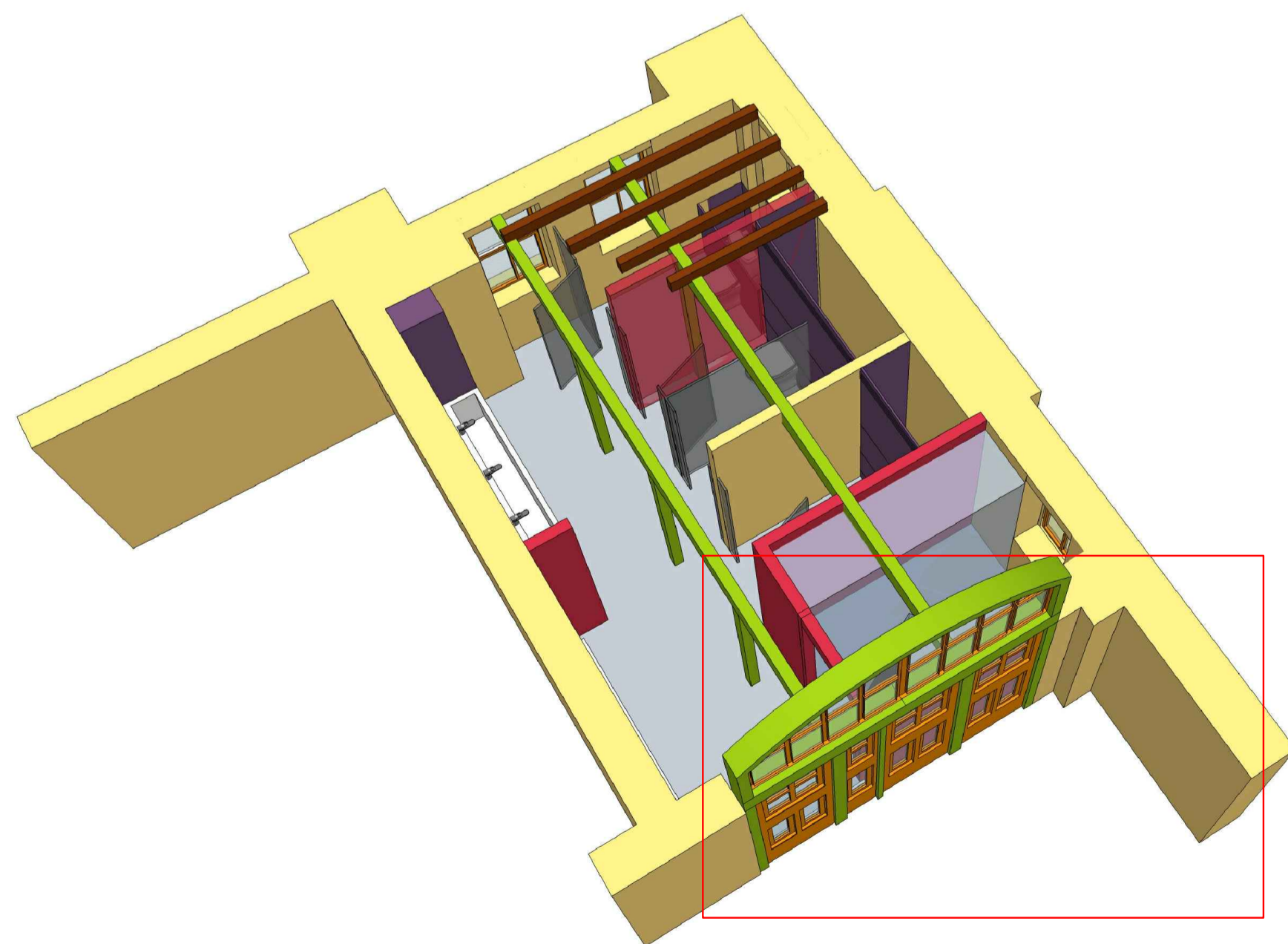


ELEVATION 1:20
 FFL 109.36
 SPL 112.35
 APL 112.80



PLAN 1:20



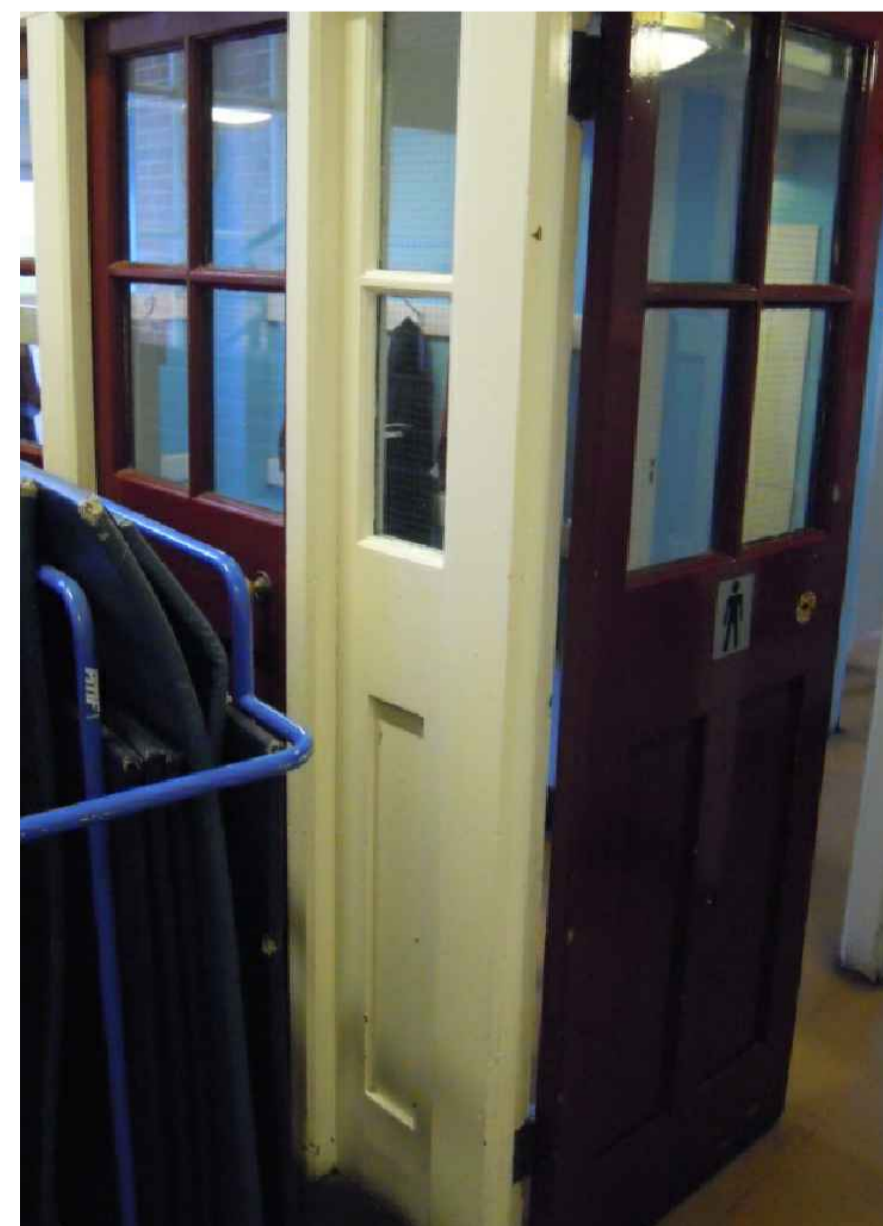
PERSPECTIVE VIEW SHOWING LOCATION OF GLAZED SCREEN



GLAZED SCREEN AS EXISTING DRAWINGS



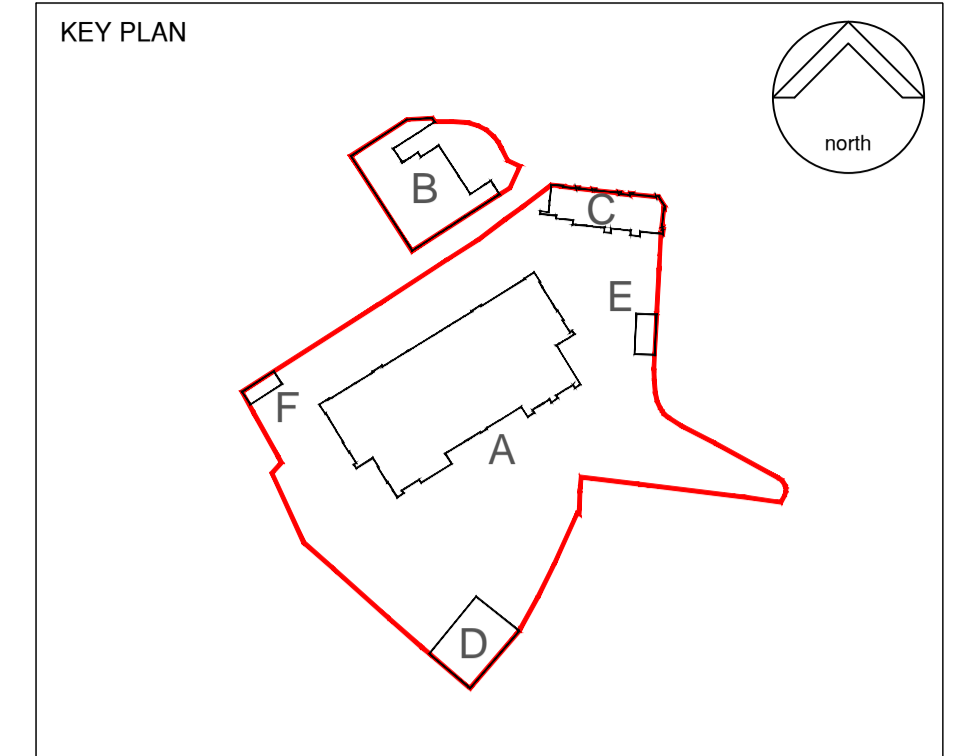
FIRST FLOOR WEST - HALL WCS



SECOND FLOOR EAST - BOYS WCS



SECOND FLOOR WEST - GIRLS WCS



NOTES:

This drawing is produced for use in this project only and may not be used for any other purpose. NPS Property Consultants Ltd accept no liability for the use of this drawing other than the purpose for which it was intended in connection with this project as recorded on the title block fields. Please refer to the 'F16 Status Code'.

This drawing may not be reproduced in any form without prior written agreement.

Do not scale from the drawing, use written dimensions only.

P2	Tender Issue			
	REVISED BY: KK	DATE: 02.02.15	CHECKED BY: MM	DATE: 02.02.15
P1	PRELIMINARY ISSUE			
	REVISED BY: KK	DATE: 20.01.15	CHECKED BY: MM	DATE: 20.01.15
SCALE BAR				
0mm 200 400 600 1200mm				
1:20				

PURPOSE OF ISSUE
FOR TENDER

FILE STATUS CODE
D2

© COPYRIGHT NPS GROUP
 Ordnance Survey mapping reproduced by permission of HM Stationery Office Crown Copyright. A1

nps group
 Barron and Smith Architects
 3 Maltings Place
 169 Tower Bridge Road, London
 SE1 5AB
 TEL: 02079403456 FAX: 02079403460
 EMAIL: office@barronandsmith.co.uk
 Head Office:
 Lancaster House, 16 Central Avenue, St Andrews Business Park,
 Newport, NP23 5RH. Tel: 01633 706000 Fax: 01633 706001
 Other Office locations can be found on our website - www.nps.co.uk

Property Design and Management Services
 CLIENT
London Borough of Camden

PROJECT
New End Primary School

TITLE
**Condition and Suitability Works
 Typical Glazed Screen Detail**

SCALES	DATE	DRAWN	CHECKED
1:20 @ A1	Jan 2015	KK	MM
FILE / DRAWING NAME	REV CODE		

PROJECT NR	DRAWING FIELDS	UNIQUE NR	REV CODE
13-1-1012	BAS-PL-A	600	P2