

Endsleigh Gardens Refuse Platform

Design and Access Statement

Contents

Introduction

3

Design

Use and Amount

5

Layout

5

Scale

6

Appearance

7

Access

10

Introduction

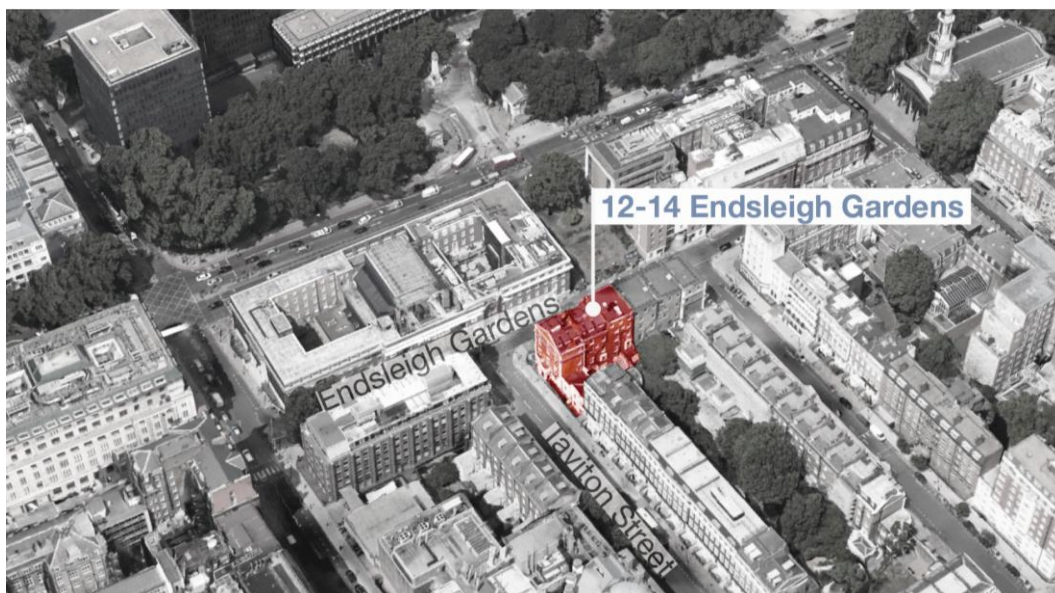
This design and access statement should be read in conjunction with the supporting drawings submitted. This application is for planning permission for a metal grate refuse platform.

The building is situated at the corner of Endsleigh Gardens and Taviton Street. It is located in the Bloomsbury Conservation Area, however it is not listed. The refuse platform will be located at the ground floor level on the northern side of the entrance at Taviton Street.

St Mungo's Broadway's Endsleigh Gardens service plays a key role in the Camden Housing Pathway for single homeless people. It offers a wide range of services which are designed to support homeless people to build their skills and progress towards more independent living. These include structured key-working and support planning, help with medical needs and access to skills training.

For a number of years, St Mungo's Broadway's Endsleigh Gardens service has been given permission by Friends Meeting House to share the refuse bin (paladin style) storage area on the perimeter of the Friends Garden. This is directly opposite the front door of the building. This has enabled St Mungo's Broadway to rent waste bins from Camden Council and have a contract for waste collection that reflects the needs of the building and its users without having an area to store the bins on the site of Endsleigh Gardens itself.

However, Friends Meeting House is in the process of refurbishing their Friends Gardens and, once complete, there will be no area available for bin storage. Friends House has advised us that they can no longer allow St Mungo's Broadway to store our bins on their property. Therefore, as part of the refurbishment works, St Mungo's Broadway plans to create an area to permanently store the paladin waste bins for the building in an area that is away from the front door, off the street and suitable screened from the passing public.



Site location.



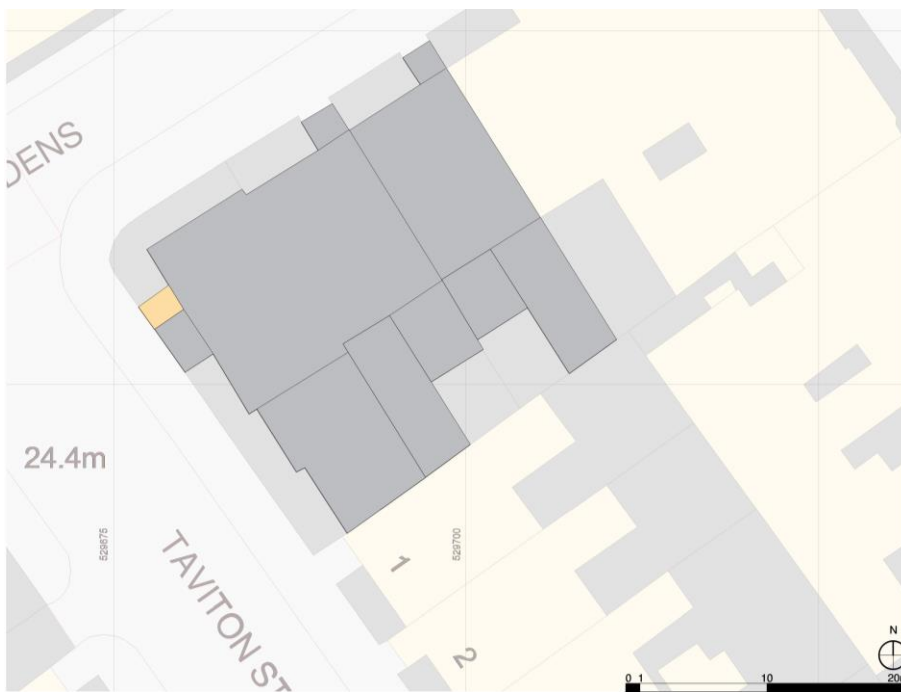
View from corner of
Endsleigh Gardens and
Taverton Street towards
South-East.

Image from Google
Street View.

Design

Use and Amount

The proposed platform will be used to store refuse bins.



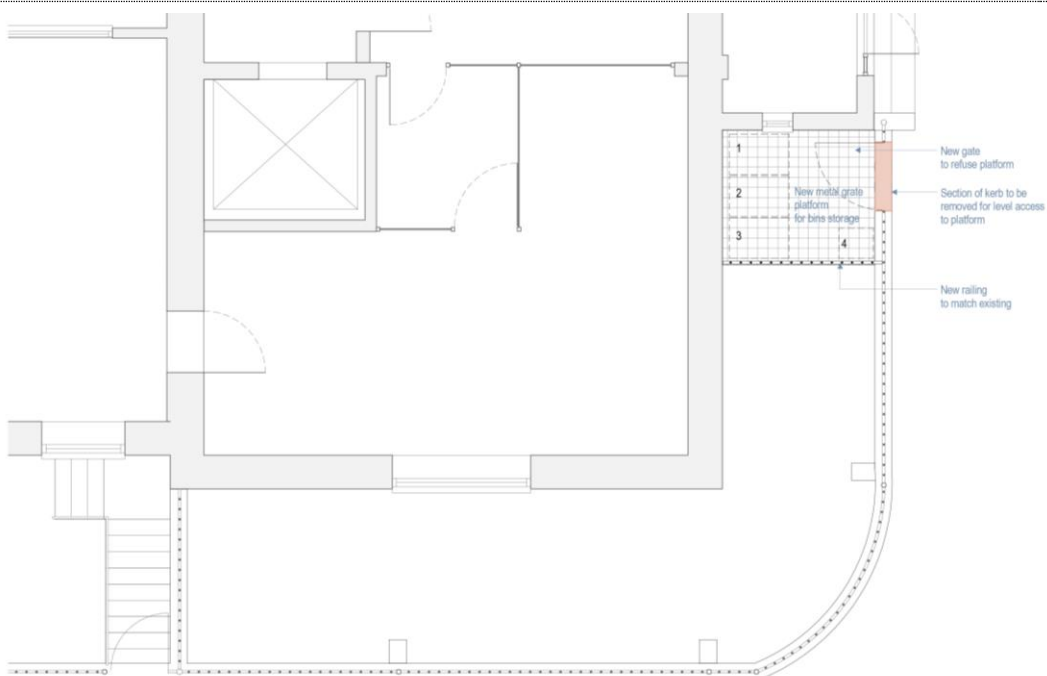
Site plan.

Key

- Site buildings
- New refuse platform

Layout

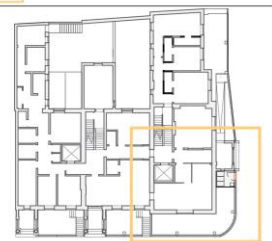
The proposed platform will be fixed in the light well alongside Taviton Street at pavement level. It will provide space for storing refuse bins. Access to the platform will be provided through new gate in the railing.



Proposed plan.

Key Plan

- Location of proposed works



Scale

The proposed platform will have an area of 4.5 m². To allow level access from the pavement a small section of the kerb will be removed. Part of the existing railing is proposed to be carefully removed and converted into a gate. A new railing is also proposed on the edge of the platform.



Perspective view – as existing.

Part of the railing which will be converted into a gate and the section of kerb which will be removed are marked in red.



Perspective view – proposed.

The new railing and gate are marked in black.

Platform's floor is made of metal grating to allow light to windows below and avoid rainwater gathering on its surface.

Appearance

The objective is to achieve a refuse platform which will blend in with the existing fabric and limit the shading of the window in the lower ground floor. The proposed design is for a metal grate platform with painted metal railings to match existing. It will be supported by painted SHS steel columns.

Access is provided through a gate from the pavement. The gate is proposed to be made using removed section of the railing so that it will blend in with the retained existing railings.

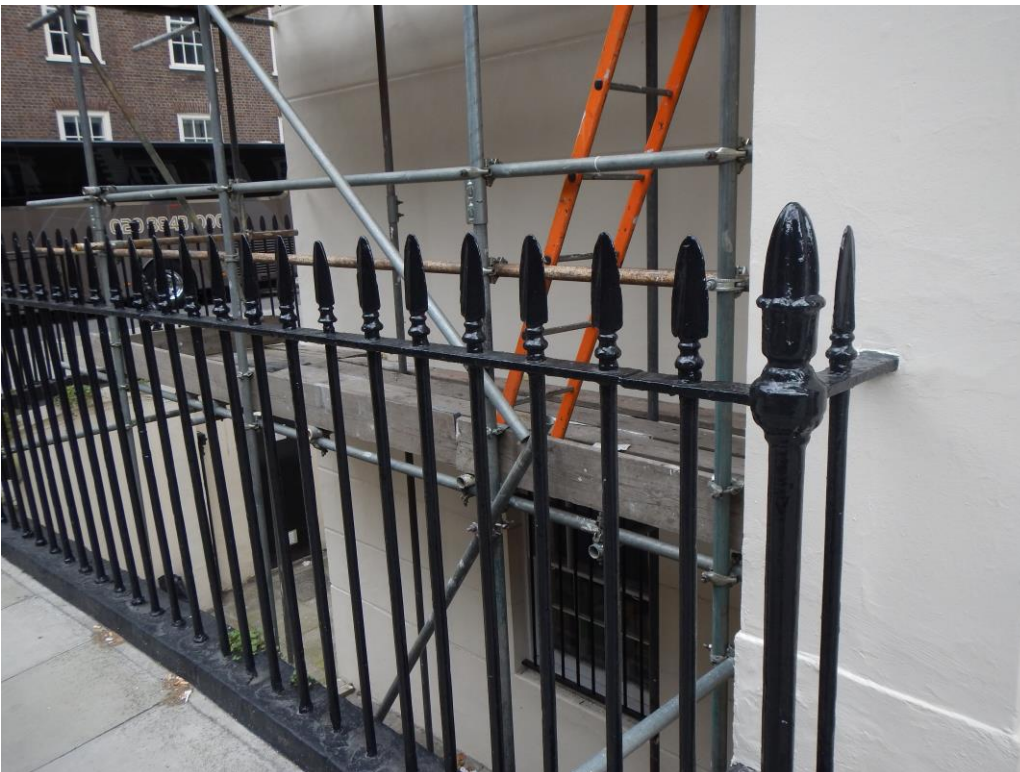


View of the entrance door on Taverton Street.

The platform is proposed to be located to the left of the entrance.



View of the well where refuse platform is proposed.



View of the well in which the platform is proposed.

Access

Access to the building remains unaltered. The proposed works for the refuse platform are not for public access.