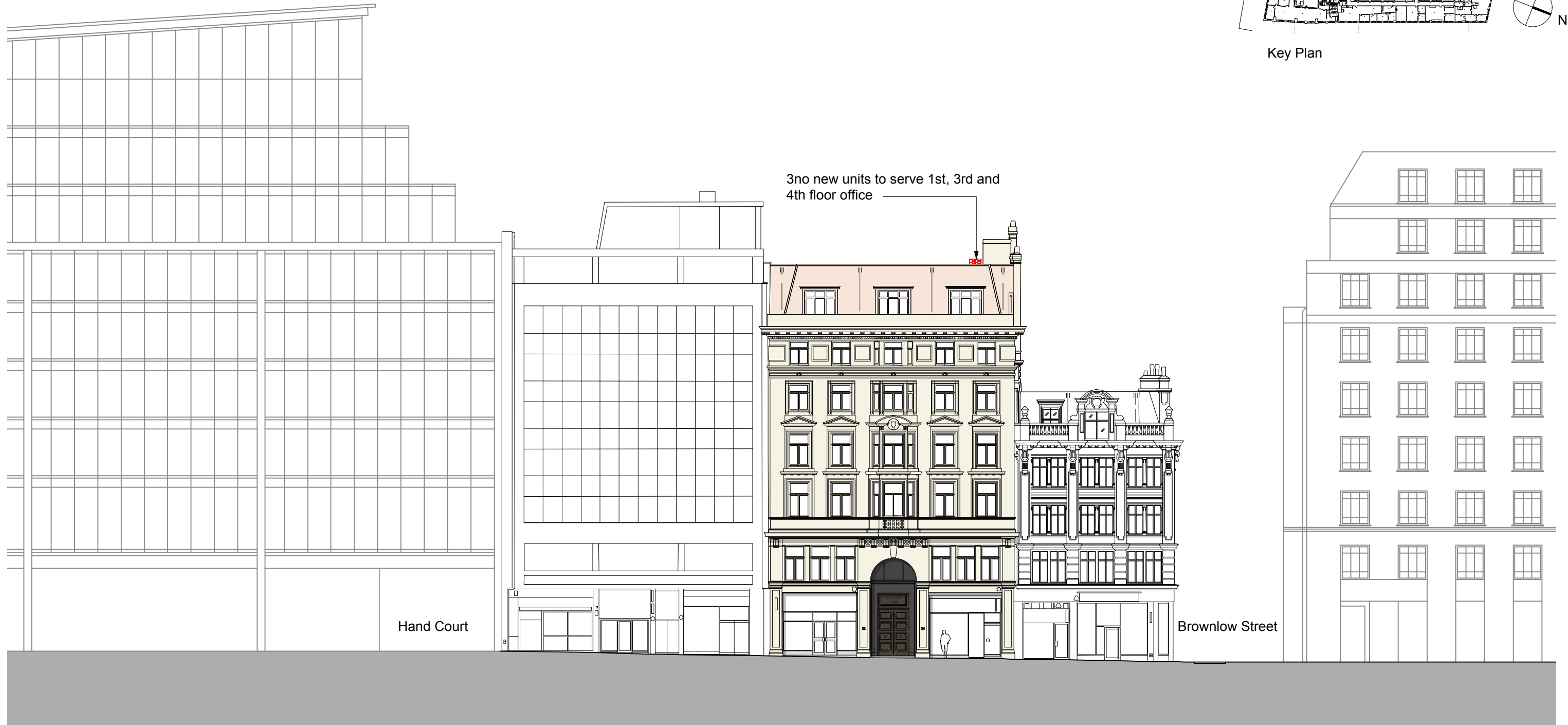


Key Plan



**DRAWING NOTES:**  
 All dimensions to be checked on site prior to commencement of any works, and/or preparation of any shop drawings.  
 Sizes of and dimensions to any structural elements are indicative only. See structural engineers drawings for actual sizes/dimensions.  
 Sizes of and dimensions to any service elements are indicative only. See service engineers drawings for actual sizes and dimensions.  
 This drawing to be read in conjunction with all other Architect's drawings, specifications and other Consultants' information.  
 All proprietary systems shown on this drawing are to be installed strictly in accordance with the Manufacturers/Suppliers recommended details.  
 Any discrepancies between information shown on this drawing and any other contract information or manufacturers/suppliers recommendations is to be brought to the attention of the Architect.  
 DO NOT SCALE FROM THIS DRAWING.

**DRAWING NOTES:**

STATUS	REVISION	DATE

<b>DRAWING</b> Proposed South Elevation High Holborn	
SCALE 1:250 @ A3	DRAWING FILE REF
DATE Feb. 2015	DRAWN BY HW
DWG No. 807_PL_E--10	REVISION P1
DRAWING STATUS Planning	

<b>Buckley Gray Yeoman</b>	
Studio 4.04 The Tea Building 56 Shoreditch High Street London E1 6JJ T: 020 7033 9913 F: 020 7033 9914	
CLIENT	MPG Holborn 2 Ltd
PROJECT	High Holborn House

Information contained on this drawing is the sole copyright of Buckley Gray Yeoman and is not to be reproduced without their permission.