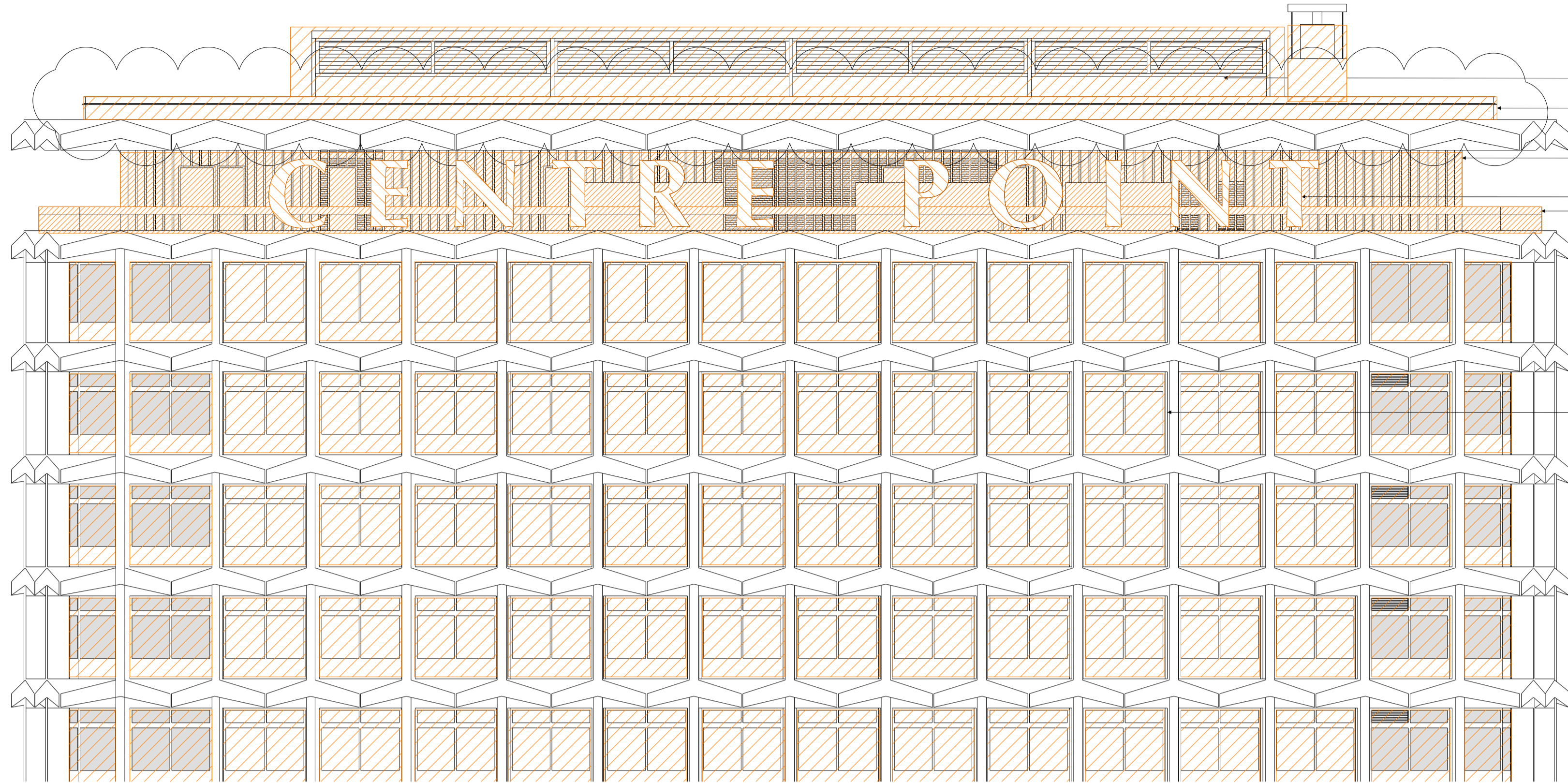


TOP OF PLANT +141.060m  
 PARAPET +138.660m  
 THIRTY-FOUR FLOOR  
 THIRTY-THIRD FLOOR  
 THIRTY-SECOND FLOOR  
 THIRTY-FIRST FLOOR  
 TYPICAL FLOOR  
 FIFTH - THIRTIETH



Plantroom screen and all plant on roof level to be removed.  
 BMU track replacement, omission of designated parking position for upgraded BMU unit  
 Plantroom screen and all plant on level 34 to be removed.  
 Signage removed in preparation for replacement.  
 Balustrade removed in preparation for replacement.  
 All windows to be removed in preparation for replacement.

NOTES: DO NOT SCALE FROM THIS DRAWING. CONTRACTOR TO CHECK ALL DIMENSIONS ON SITE. ANY DISCREPANCIES TO BE REPORTED TO THE ARCHITECT IMMEDIATELY.  
 COPYRIGHT CONRAN AND PARTNERS LIMITED ©

AREA KEY

RESIDENTIAL	[Blue]
RETAIL	[Yellow]
PLANT	[Green]
CIRCULATION	[Grey]
CAR PARK	[Light Blue]
BACK OF HOUSE	[Dark Grey]
OFFICE	[Brown]
RESIDENTIAL AMENITY	[Purple]

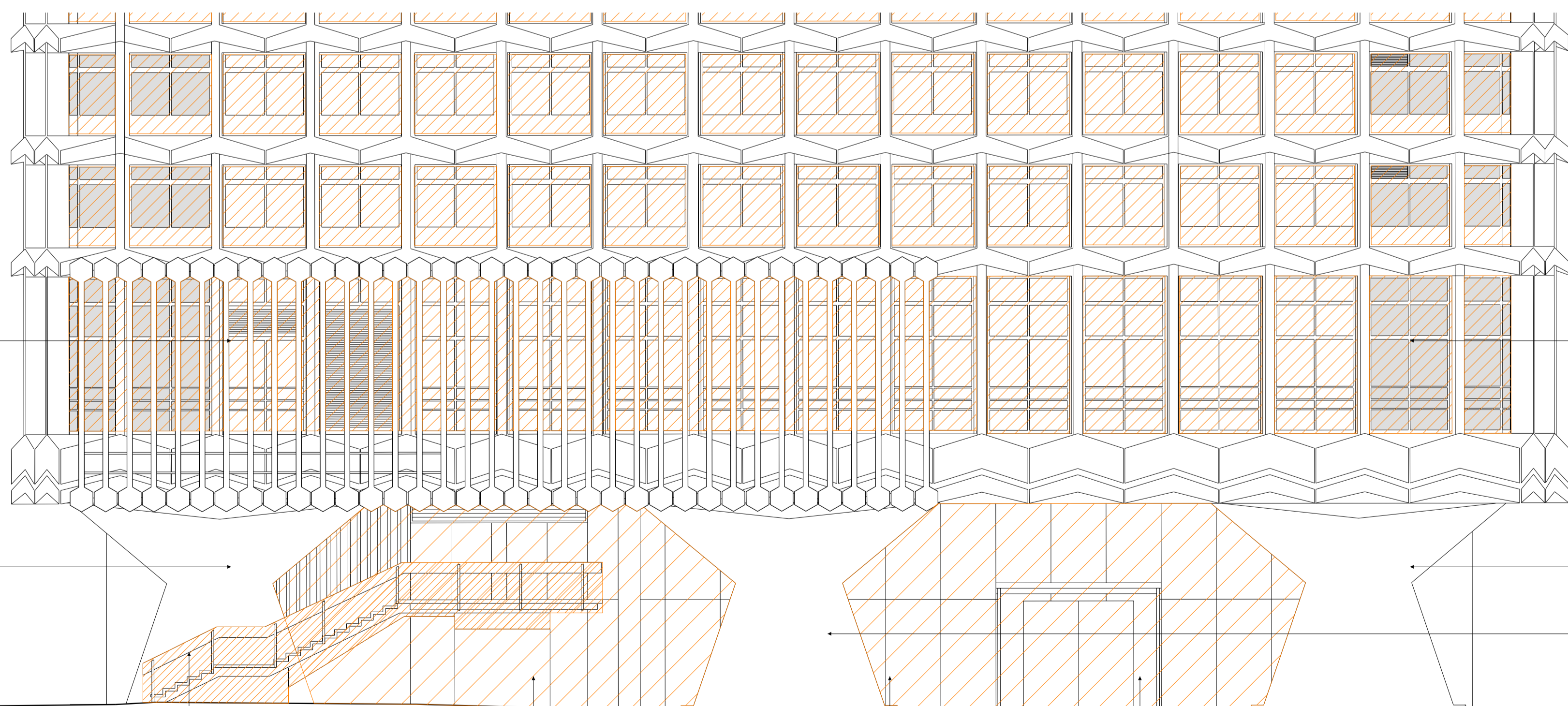
KEY

DEMOLITION	[Orange Hatched]
EXISTING STRUCTURE	[Black]
PARTITION	[Dark Grey]
PROPOSED STRUCTURE	[Light Blue Hatched]
BUILDERSWORK OPENING THROUGH EXISTING SLAB	[Blue Hatched]
BUILDERSWORK OPENING THROUGH UPPER AND LOWER SLAB (USED ON 1ST FLOOR ONLY)	[Blue Hatched]
BUILDERSWORK OPENING THROUGH UPPER SLAB (USED ON 1ST FLOOR ONLY)	[Blue Hatched]

Survey Information Prepared by Plowman Craven.  
 Original Drawing: 25411E-01C-Elevations

1 EXISTING ELEVATION WEST DEMOLITIONS 1:100  
 UPPER LEVELS

FOURTH FLOOR  
 THIRD FLOOR  
 SECOND FLOOR  
 FIRST FLOOR  
 FFL +33.150m  
 MEZZANINE FLOOR  
 FFL +28.570m  
 GROUND FLOOR  
 FFL +25.710m



Remove louvres as part of fenestration removal

All windows to be removed in preparation for replacement.

Method / extent of repair / replacement of existing mosaic cladding to be agreed.

Method / extent of repair / replacement of existing mosaic cladding to be agreed.

Method / extent of repair / replacement of existing mosaic cladding to be agreed.

NEW OXFORD STREET

Remove external staircase in preparation for relocation internally.

Remove all existing fenestration and glazing.

Remove all existing fenestration and glazing.

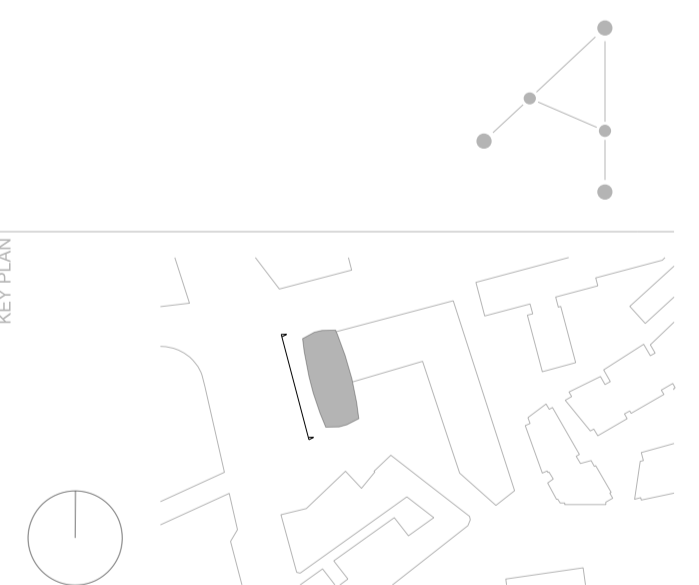
Remove existing non-original entrance canopy and revolving door.

ANDREW BORDE STREET

2 EXISTING ELEVATION WEST DEMOLITIONS 1:100  
 LOWER LEVELS

REVISIONS

REV	DATE	DESCRIPTION
PL2	FEB 15	PLANNING ISSUE: Updated demolition scope for removal of BMU track removal and retained finishes notes updated.
PL1	01.04.13	PLANNING ISSUE



STATUS: **PLANNING**

**CONRAN+ PARTNERS**  
 Architects Designers  
 22 Shad Thames London SE1 2YU  
 T: 020 7403 8899  
 cp@conran.com www.conranandpartners.com

**Centre Point**  
 101-103 New Oxford Street  
 London, WC1A 1DD

TITLE: DEMOLITION ELEVATIONS - WEST

CENTRE POINT TOWER

CHECKED	DRAWN	JOB #	DATE	REV
NT		552	19253-CPT	PL2
CHECKED	SCALE	SIZE	DATE	REV
NE	1:100	A1	APR13	FEB 15