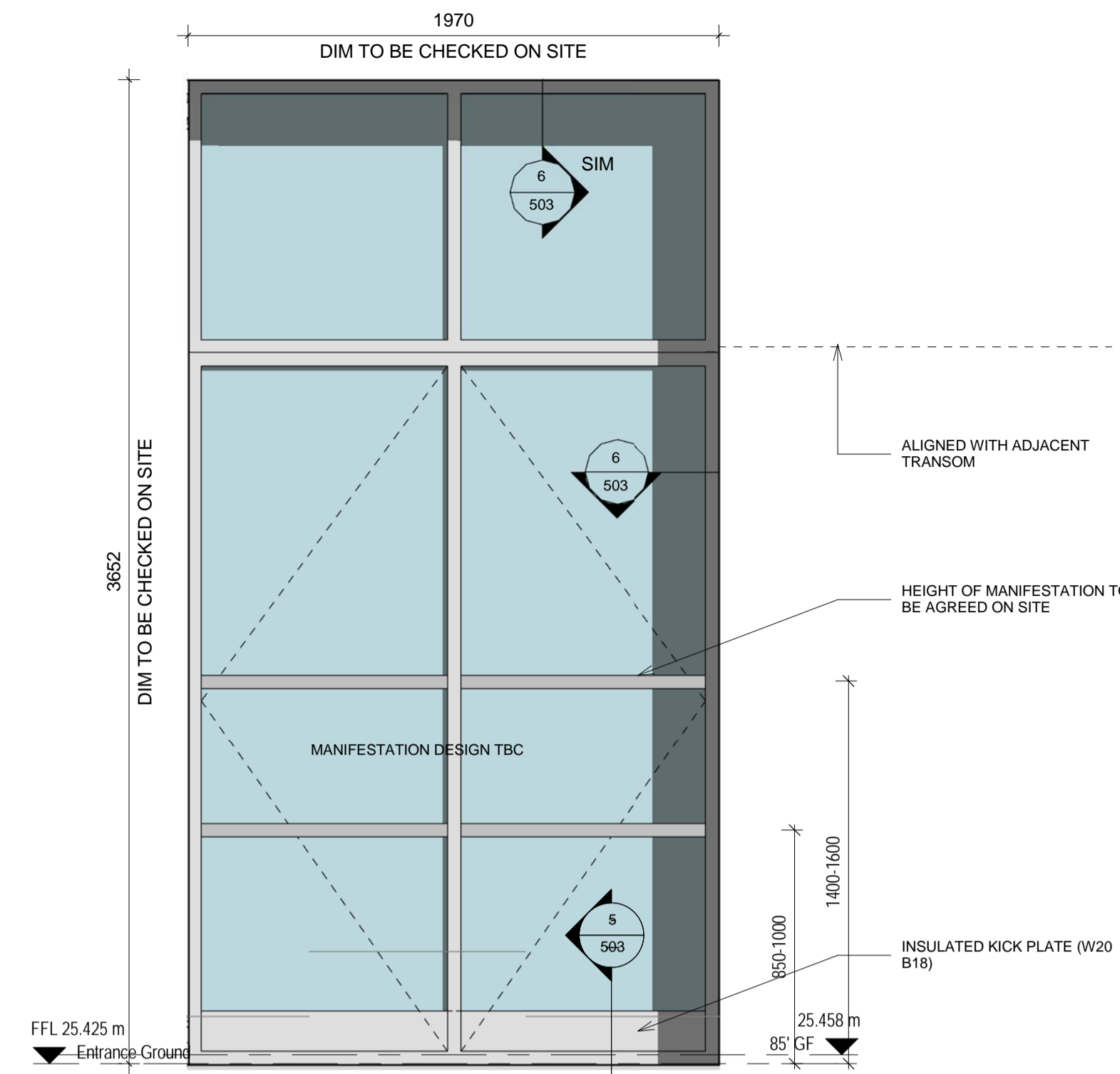
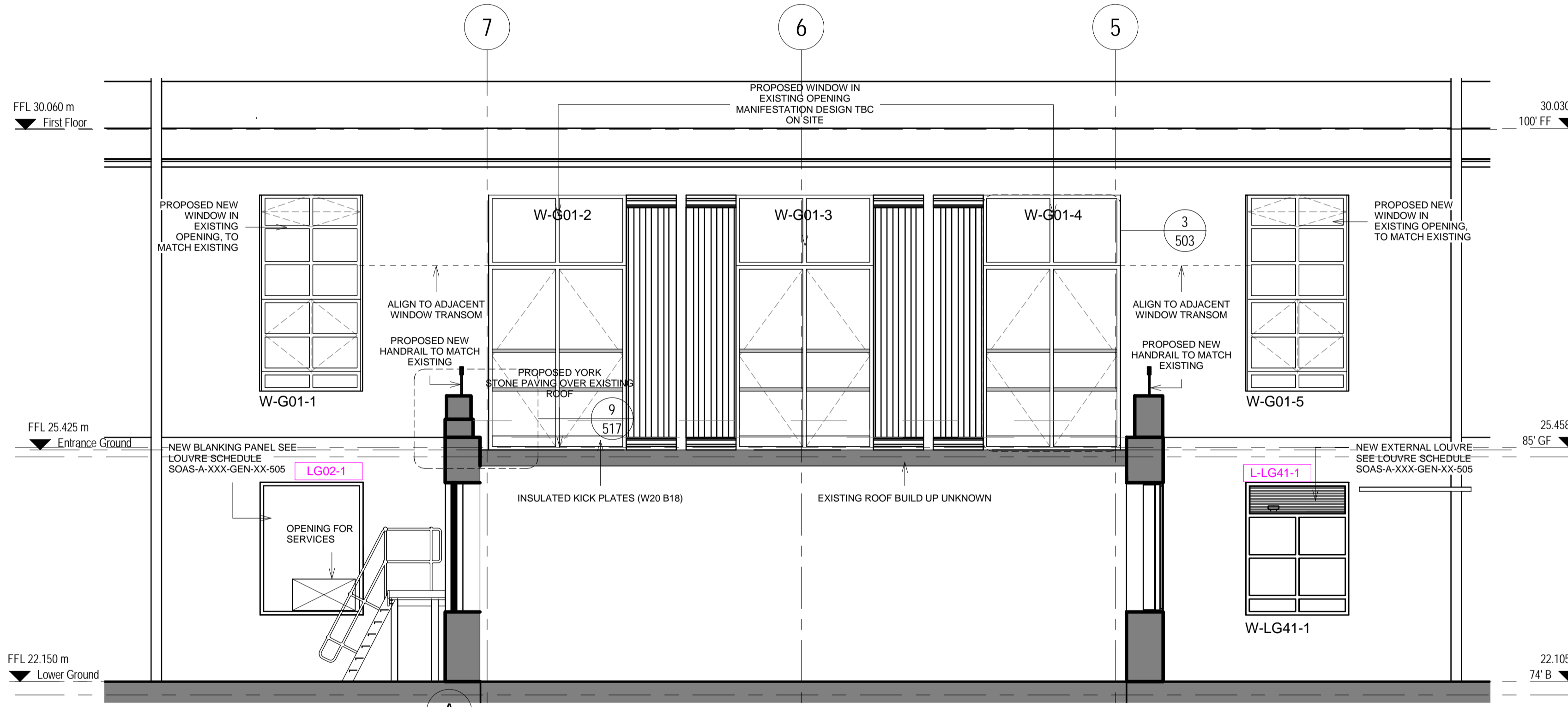


1 FLOOR PLAN- PROPOSED CLOISTER WINDOWS  
1:50



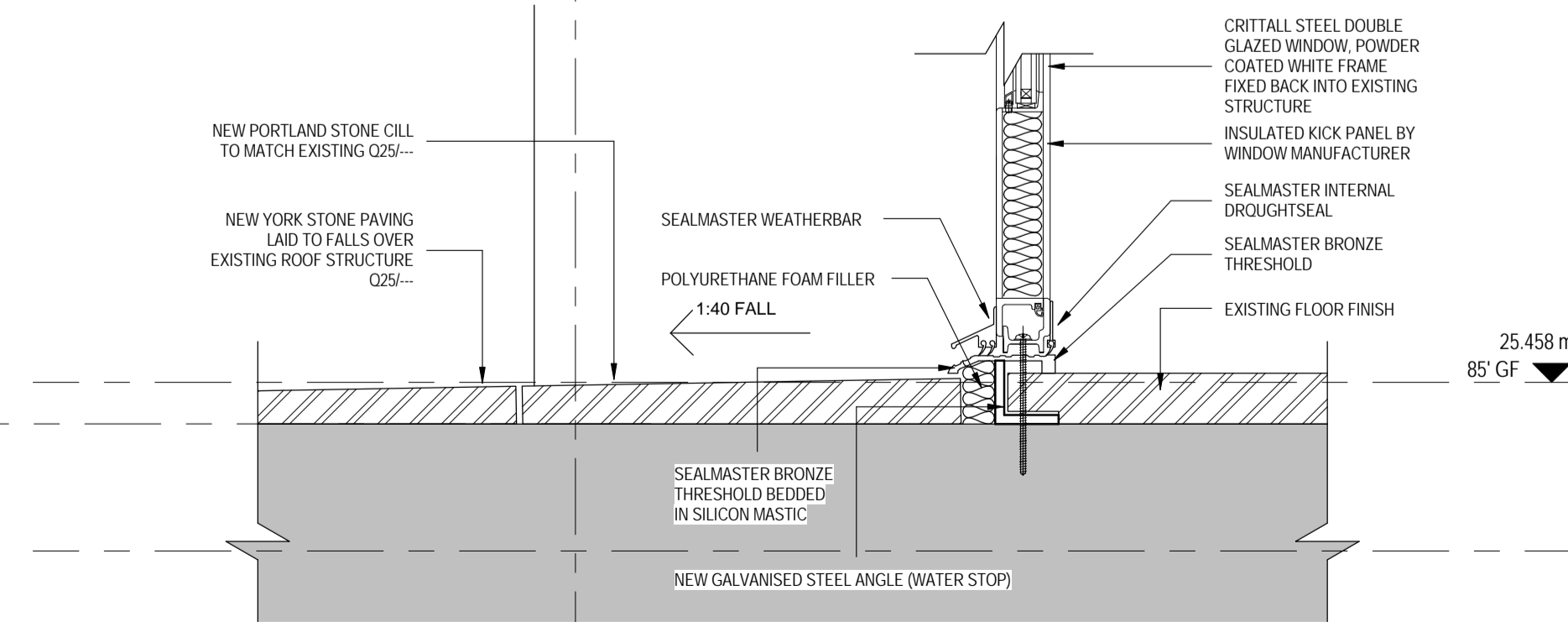
3 TYPICAL CLOISTER WINDOW  
1:20



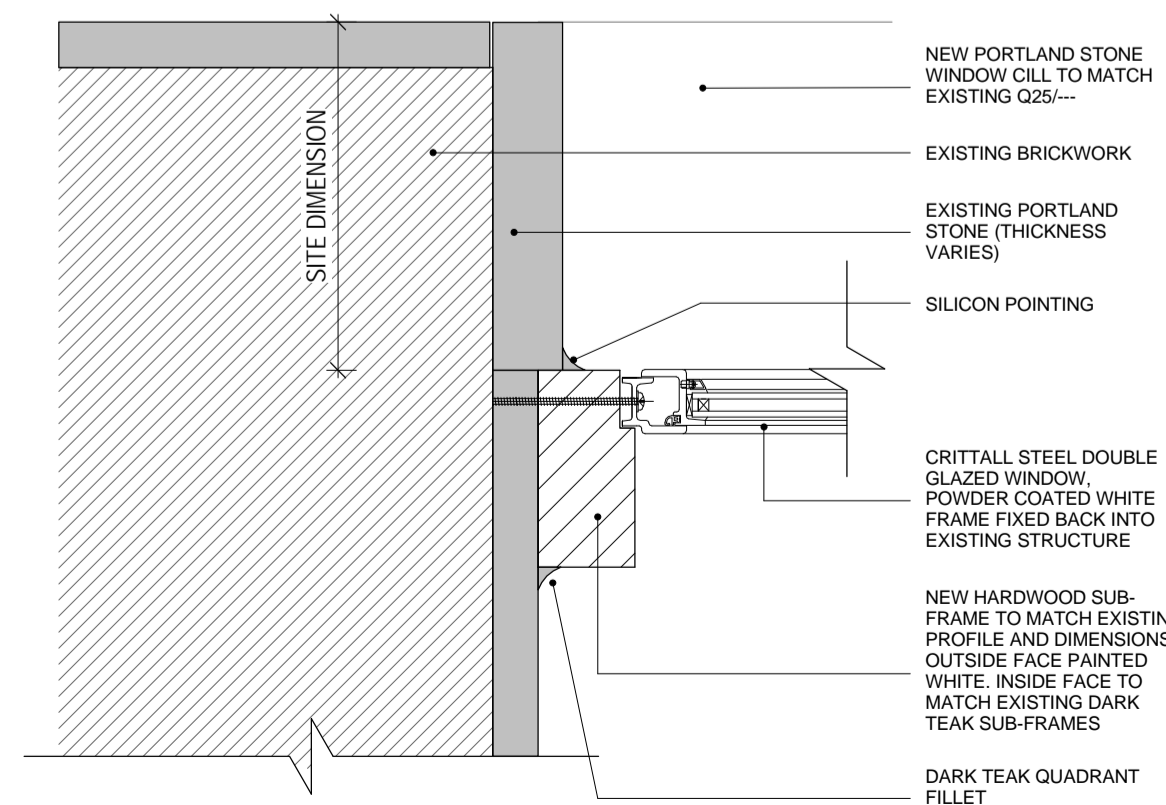
2 ELEVATION- PROPOSED CLOISTER WINDOWS  
1:50



4 EXTERNAL VIEW TOWARDS NEW CLOISTER GLAZING



5 STEEL DOOR THRESHOLD SECTION  
1:5



6 STEEL DOOR JAMB DETAIL  
1:5

© COPYRIGHT Mace Group  
NOT TO BE REPRODUCED WITHOUT WRITTEN PERMISSION.  
BECAUSE OF POSSIBLE SCALING ERRORS IN ELECTRONIC AND HARD COPY REPRODUCTION DO NOT SCALE FOR CONSTRUCTION PURPOSES.  
ALL DIMENSIONS TO BE CHECKED & VERIFIED ON SITE PRIOR TO CONSTRUCTION.

**Safety first. Second nature.**

Safety, Health and Environment Information

The significant unusual hazards / risks associated with this type of work are noted as:

CONSTRUCTION	
CI	NONE
CII	NONE
OPERATION AND MAINTENANCE	
OI	NONE
OII	NONE
DISMANTLING/DEMOLITION	
DI	NONE
DII	NONE

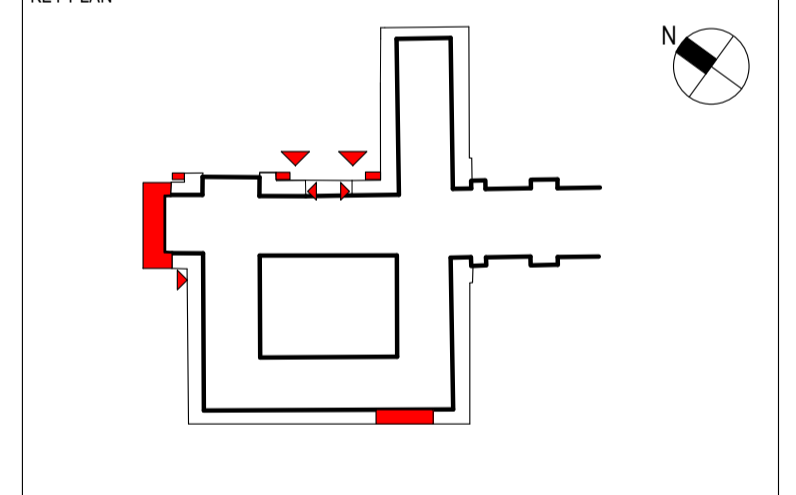
NOTE - TO BE READ IN CONJUNCTION WITH RISK REGISTER

THIS DRAWING SHOULD BE READ IN CONJUNCTION WITH

- PROPOSED WINDOW SCHEDULE SOAS-SHL-GEN-XX-914
- PROPOSED EXTERNAL LOUVRES SCHEDULE SOAS-A-XXX-GEN-XX-505

W-G01-2, W-G01-3 & W-G01-4 PENDING INSTRUCTION. UNTIL INSTRUCTED SCOPE AND ARRANGEMENT TO BE AS SHOWN ON 28731-SOAS-A-XXX-GEN-00-503 REV T1.

REV	DATE	DESCRIPTION	DWN	CHK/APP
3	10.02.15	IN ABEYANCE NOTES OMITTED TO REFLECT DM EMAIL DATED 10.02.15	HB	EF/MD
2	30.01.15	CONSTRUCTION ISSUE AMENDMENTS AS HIGHLIGHTED AND NOTED ABOVE.	HB	EF/MD
1	05.12.14	REVISIONS SINCE CONTRACT DWG T1: BLANKING PANEL LG.02-1 ADDED. NOTES AMENDED: LEVELS CHANGED. PROPOSED NEW WINDOWS AMENDED. WINDOW DETAILS AMENDED. EXTERNAL VIEW UPDATED. DETAILS 5 & 6 UPDATED.	GM	LT/MD



PROJECT STATUS: CONSTRUCTION



PROJECT TITLE: SOAS INTO SENATE HOUSE MALET STREET LONDON, WC1E 7HU

DRAWING TITLE: EXTERNAL WORKS CLOISTER GLAZING

PROJECT NO.	28731	DRAWN BY	BP	DATE	06/04/13
		CHK BY	LT	DATE	06/04/13
		APPD BY	-	DATE	06/04/13
PROJECT CODE	SOAS - A - XXX - GEN - 00 - 503	VIEW TYPE		VIEW CAT.	
SHEET NO.	1 of 1	SCALE	As indicated	ORIG. SHEET SIZE	@ A1
				REV.	C 3

INFORMATION HANDLING CLASSIFICATION: UNRESTRICTED