

0 1 2 3 4 5

OPEN WELL

EXISTING GRILLES REMOVED

NEW FASCIA AND SIGNAGE (PAINTED AND EXTERNALLY ILLUMINATED)

NEW DARK BLUE SIDE PANEL WITH MENU BOARD

TROUGH BRACKET LIGHT (SEE DWG -PL 16 B)

EXISTING ENTABLATURE AND CORNICE

RETRACTABLE AWNING

MATERIALS AND FINISHES -NEW FRONTAGE

Security roller grille- metal type with open grid, painted colour Blue, Pantone 301 or matching RAL colour to sample. **Refer to Appendix in DAS.**

Existing stone fascia & cornice – restore and clean only.

New fascia – white colour painted field with blue signwriting lettering, paint finish.

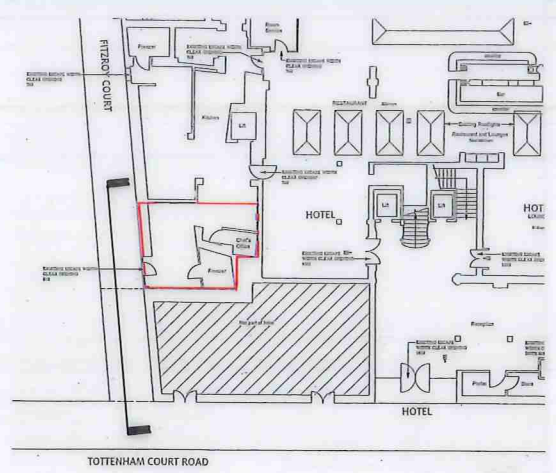
Angled side panels – painted timber with flush menu board and litter bin aperture.

Face of counter – panelled timber with raised/fielded panel, painted white with contrasting plinth.

Service door and surround – warm mid-grey colour paint finish

Lighting – fascia to be lit externally with traditional bracket light
No internally lit signage.

New paving – refer to drawing 927-PL 18



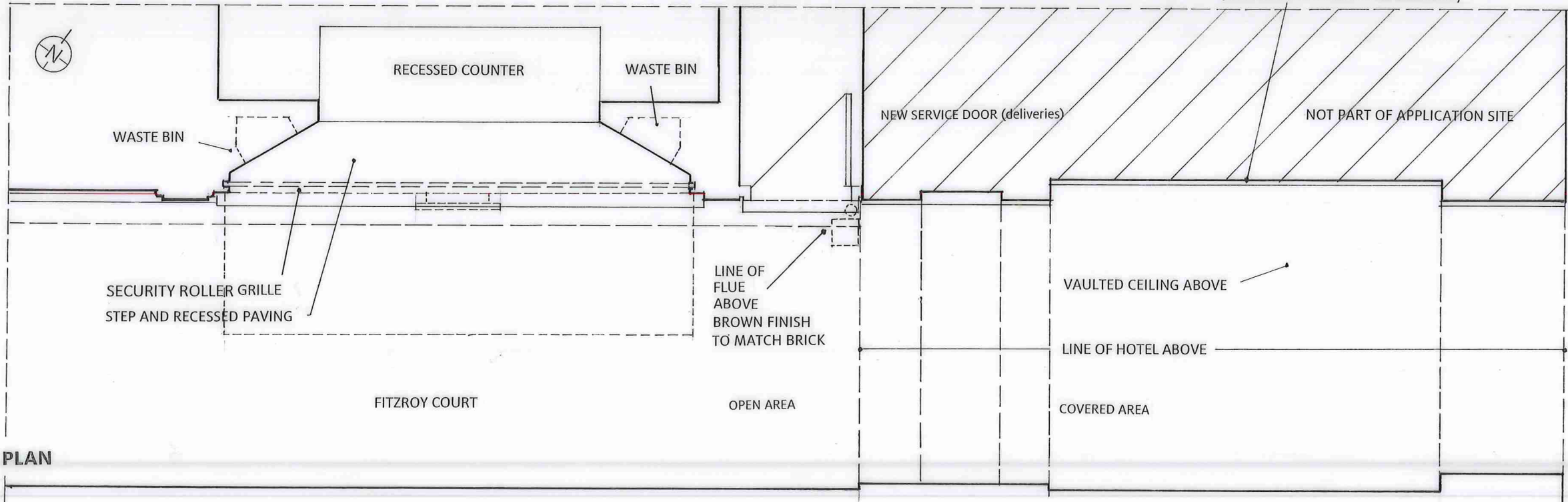
KEY PLAN

TOTTENHAM COURT ROAD



ELEVATION

REVISIONS
 B 2.3.2015 Bracket trough light indicated above shop fascia.
 A 12.1.2015 External flue amended, annotation added



PLAN

REV	DATE	DESCRIPTION
PROJECT:		
RADISSON BLU GRAFTON HOTEL		
130 TOTTENHAM COURT RD W1 T 5AY		
PROPOSED GREAT BRITISH FISH CO		
TAKE AWAY IN FITZROY COURT		
PROPOSED PLAN AND ELEVATION		
- FITZROY COURT		
1:50 @A3		
DRAWING STATUS		
PLANNING APPLICATION		1:50
DRAWN	CHECKED	SCALE(S)
927	PL 14	1:50
JOB	DRAWING NUMBER	REVISION
		B
ETTWEIN BRIDGES		
ARCHITECTS		
53 Rawstone Street London EC1V 7NQ		
T: 020 7837 1008 F: 020 7837 4008 E: mail@ebarch.com		
Registered in England and Wales. Partnership No. OC 383122		
THIS DRAWING IS THE PROPERTY OF ETTWEIN BRIDGES ARCHITECTS LLP. DO NOT SCALE OFF THIS DRAWING. ANY DIMENSIONS SHOWN MUST BE CHECKED ON SITE BEFORE CONSTRUCTION OR MANUFACTURE		

PART OF HOTEL

OPEN PASSAGEWAY

FITZROY COURT

0 1 2 3

LINE OF HOTEL ABOVE

RETRACTABLE CANOPY

EXISTING ENTABLATURE AND CORNICE

EXISTING GRILLES REMOVED
NEW FASCIA AND SIGNAGE

RETRACTABLE CANOPY
PLAIN BLUE-COLOURED AWNING (no logo)

SECURITY ROLLER SHUTTER

NEW DARK BLUE SIDE PANEL WITH MENU BOARD

ROLLER SHUTTER BOX 450 x 450

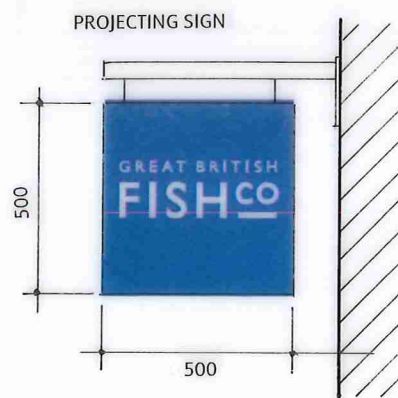
PROPOSED GREAT BRITISH FISH CO

RECESSED COUNTER

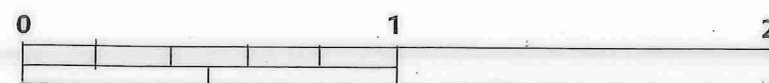
PROJECTING SIGN 500 X 500 x 60 mm NON-ILLUMINATED

PROPOSED CROSS SECTION - FITZROY COURT

PROJECTING SIGN

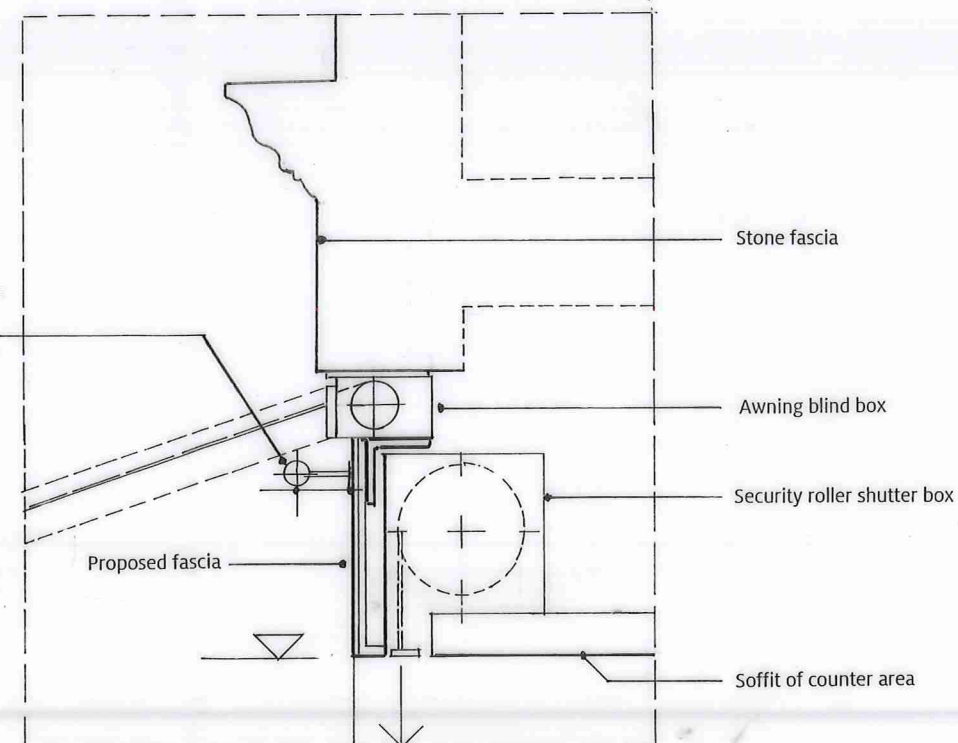


1:20
SCALE BAR

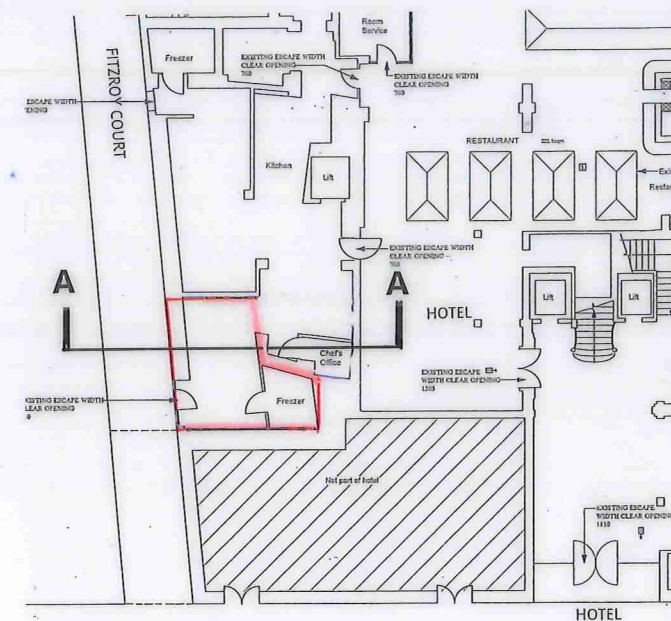


Ecolux II 50 mm diameter tubular 'trough light'
IP64 LED fitting
two brackets 900 mm long at centre of fascia -
10 W output

(SEE GRAPHIC DESIGN PROGRAMME)



TYPICAL SECTION THROUGH FASCIA 1:20



TOTTENHAM COURT ROAD

KEY PLAN

REVISION B 2.3.2015
FASCIA LIGHT FITTING DETAILS ADDED AT 1:20

A 6.1.2015 ROLLER SHUTTER AND SIGN DETAILS
ADDED
AWNING DETAILS CLARIFIED

REV	DATE	DESCRIPTION
PROJECT GRAFTON HOTEL 130 TOTTENHAM COURT ROAD W1 T 5AY PROPOSED GREAT BRITISH FISH CO TAKE AWAY IN FITZROY COURT TITLE		
DRAWING STATUS PLANNING APPLICATION 11.2014		
DRAWN	CHECKED	SCALE(S) 1:50@A3
JOB	DRAWING NUMBER	REVISION
927	PL 16	B
ETTWEIN BRIDGES ARCHITECTS 53 Rawstorne Street London EC1V 7NQ T: 020 7837 1008 F: 020 7837 4008 E: mail@ebranch.com Registered in England and Wales. Partnership No. OC 383122 THIS DRAWING IS THE PROPERTY OF ETTWEIN BRIDGES ARCHITECTS LLP. DO NOT SCALE OFF THIS DRAWING. ANY DIMENSIONS SHOWN MUST BE CHECKED ON SITE BEFORE CONSTRUCTION OR MANUFACTURE		