

Camden Geological, Hydrogeological and Hydrological Study Watercourses

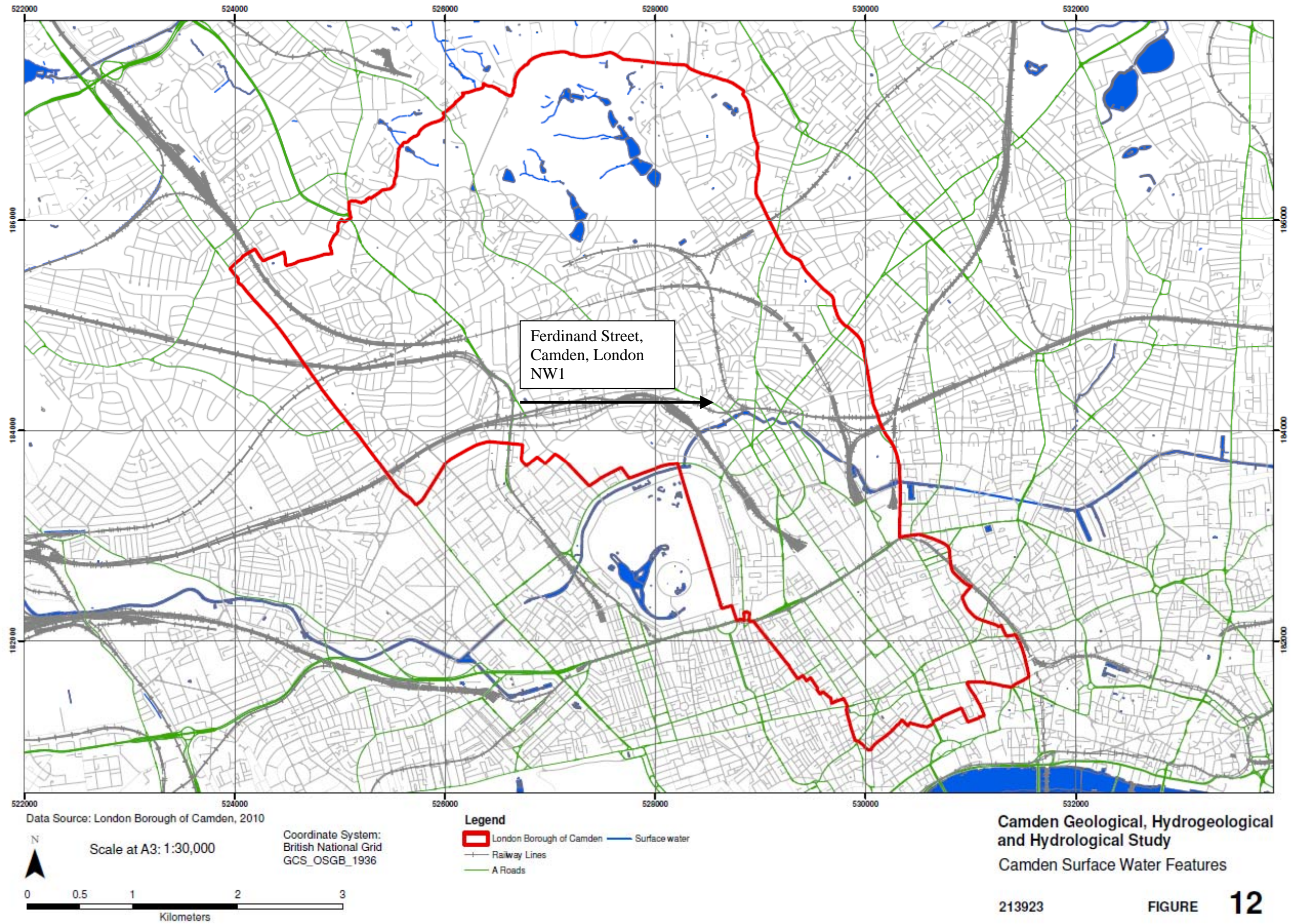
Source – Barton, Lost Rivers of London

213923

FIGURE 11

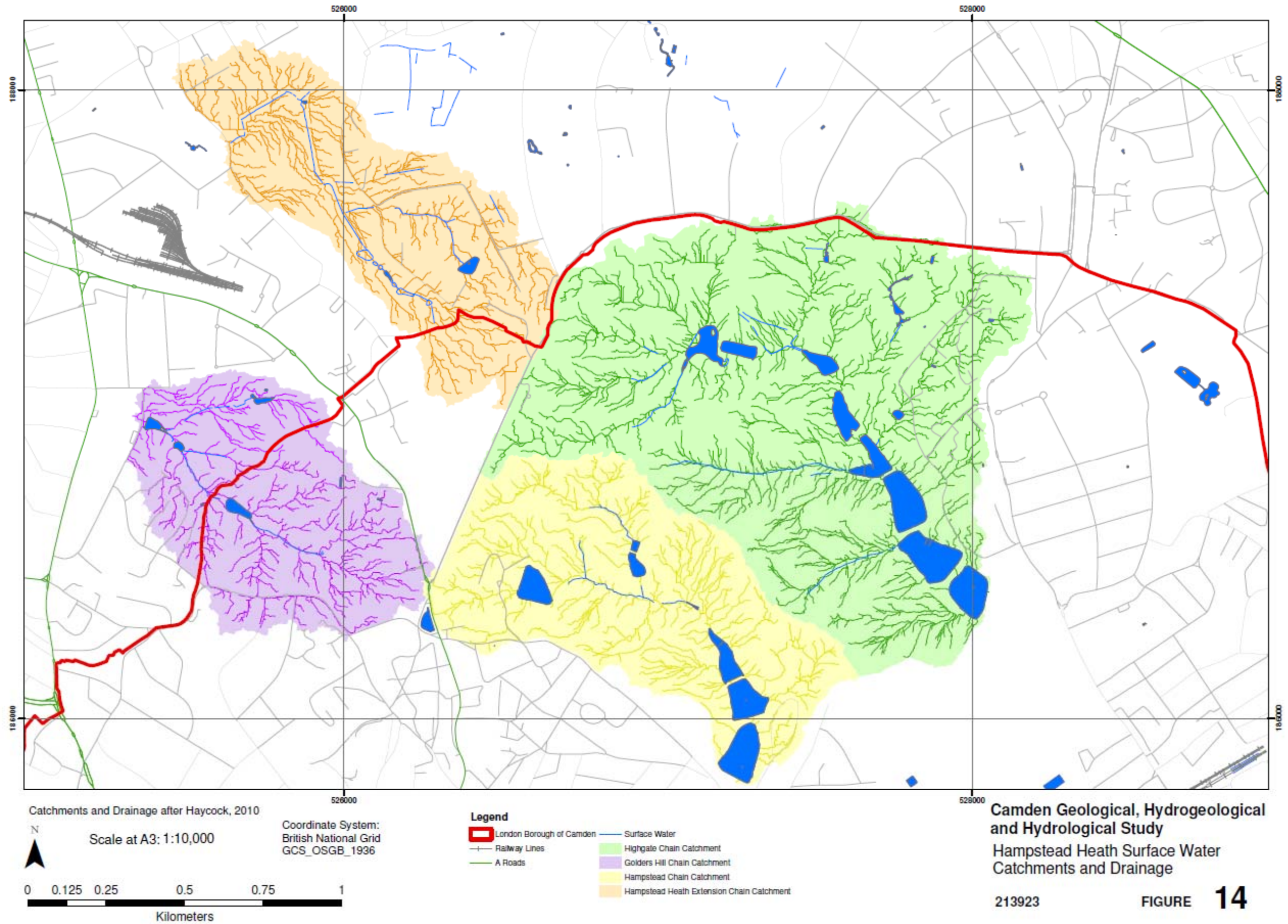
A.13 CGH&H Study – Fig 11 Camden Watercourses





A.14 CGH&H Study – Fig 12 Camden Surface Water Features





A.15 CGH&H Study – Fig 14 Hampstead Heath Surface Water Catchments & Drainage



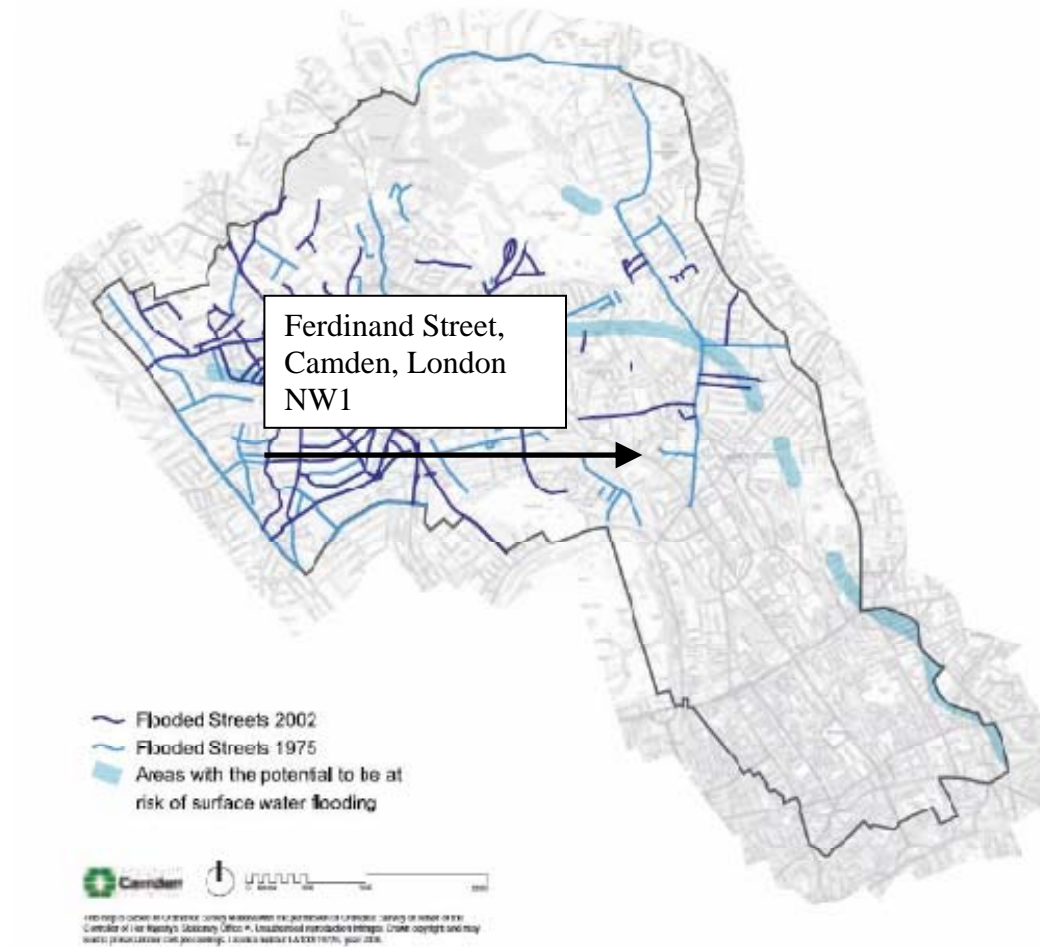


Figure 5 from Core Strategy, London Borough of Camden

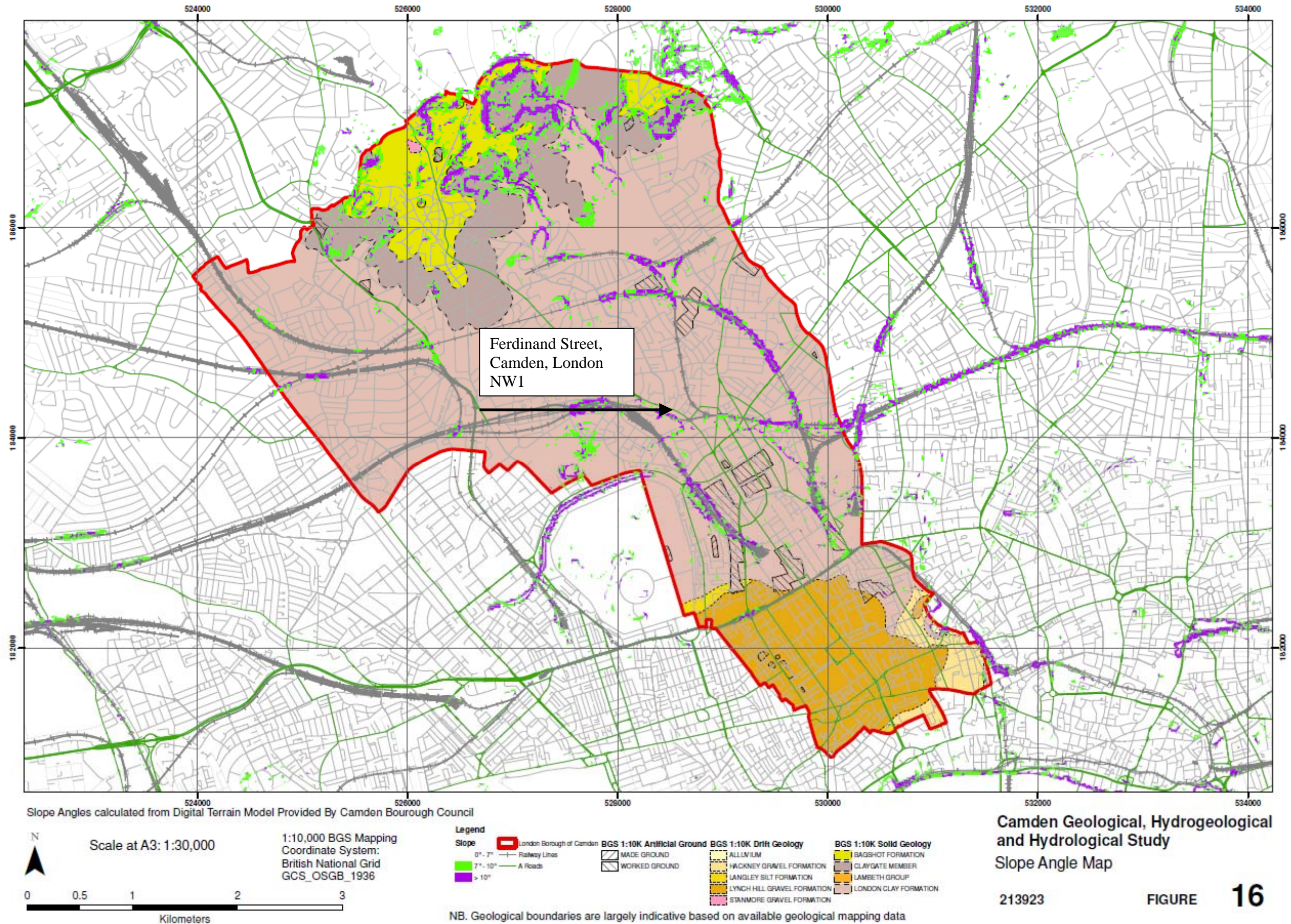
Camden Geological, Hydrogeological
and Hydrological Study
Flood Map

213923

FIGURE 15

A.16 CGH&H Study – Fig 15 Camden Flood Map



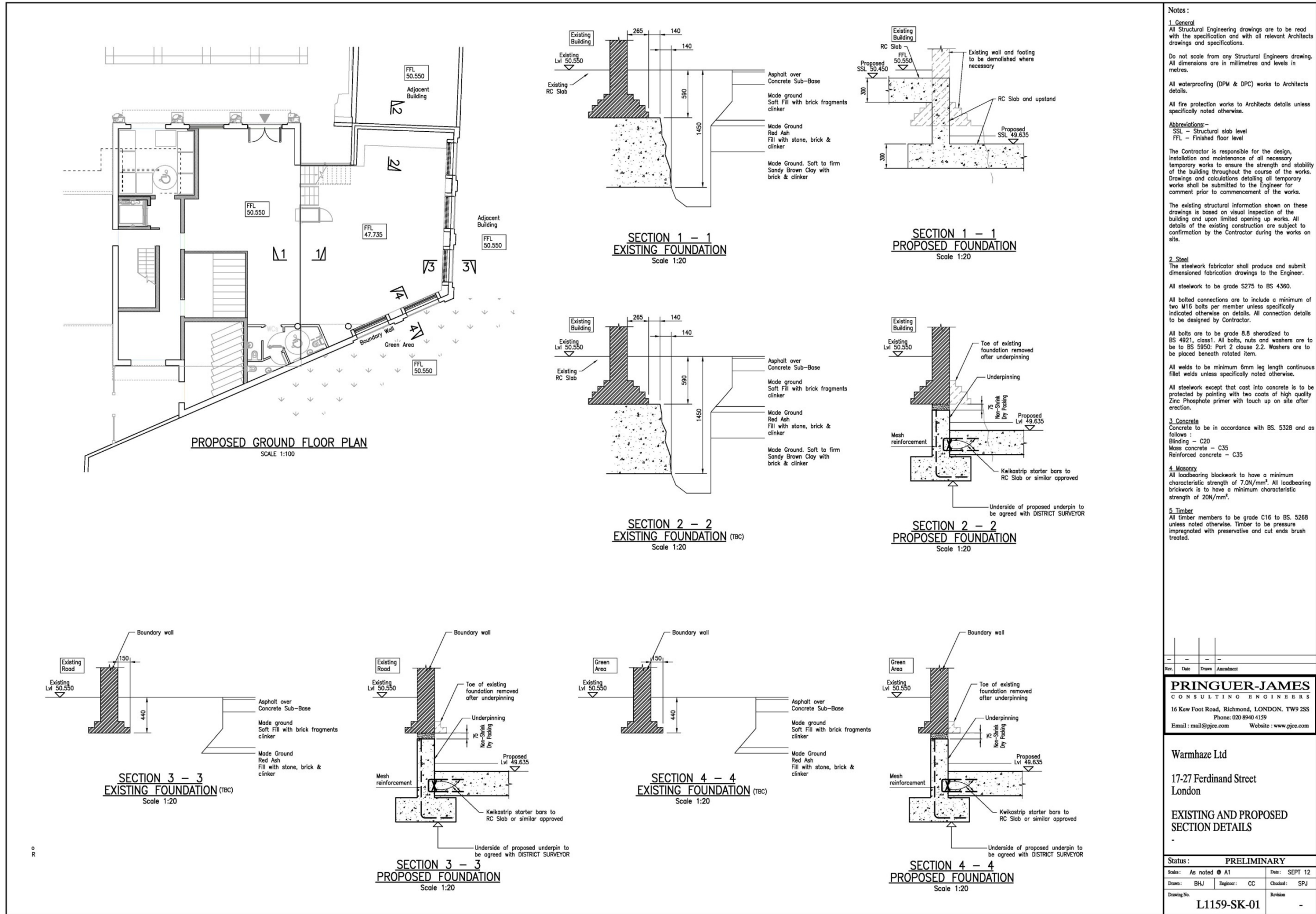


A.17 CGH&H Study – Fig 16 Camden Slope Angle Map



Appendix B
Pringuer-James Consulting Engineers
Basement Impact Assessment
Preliminary Drawings





B.1 PJCE Scheme Drawings – SK-01 Lower Ground Floor Layout & Section Details



Appendix C

**Pringuer-James Consulting Engineers
Basement Impact Assessment**

**Site Investigation Report
Soil Consultants Ltd.
Report Ref: C9117/JRCB/OT**



GROUND INVESTIGATION REPORT

PROPOSED REDEVELOPMENT:

**10A BELMONT STREET
LONDON NW1 8HH**



**Client: SEMALI INVESTMENTS LTD
46 Great Marlborough Street
London W1F 7JW**

**Consulting Engineers: PRINGUER-JAMES CONSULTING ENGINEERS LTD
16 Kew Foot Road, Richmond
London TW9 2SS**

Report ref: 9117/JRCB/OT

Date: 30th January 2012 [Rev 0]

Head Office:-
High Wycombe:
Chiltern House, Earl Howe Road, Holmer Green, High Wycombe, Bucks HP15 6QT
t: 01494 712 494
e: mail@soilconsultants.co.uk
w: www.soilconsultants.co.uk

Regional Offices:-
Cardiff:
23 Komilly Road, Cardiff CF5 1PH
t: 02920 403875
e: cardiff@soilconsultants.co.uk

Harwich:
Haven House, Abemarle Street, Harwich, Essex CO12 3HL
t: 01255 241639
e: harwich@soilconsultants.co.uk

Registered in England No 1814762 - Bay Lodge, 36 Harefield Road, Uxbridge, Middlesex UB8 1PH

VAT No 491 8249 15



Site		10A Belmont Street, London NW1 8HH		Borehole No:		1		
Location				Sheet		1 of 3		
Client:		Semali Investments Ltd		Report No:		9117/JRCB		
Engineer:		Pringuer-James Consulting Engineers Ltd						
Comments	Samples		Field Test	Strata		Strata Description	Legend	
	Type	Depth (m)		Depth (m)	Level (mOD)			
BH carried out on 13 Dec 2011 Service pit to 1.20m BH/casing dia: 150mm Ground-water inflow at 1.80m Rose to 1.58m [20 minutes] BH cased to 3.50m	D	0.25		0.00	0	+29.00	ASPHALT surfacing [100mm] over road-base and brick	0
	D	0.50		0.25	1	+28.75	MADE GROUND: dark grey and black ashy sand with gravel, brick fragments and clinker - locally clayey	1
	D	1.00		0.95	1	+28.05	MADE GROUND: soft [locally very soft] brown/grey and brown/orange sandy clay with brick fragments, gravel and occasional clinker	1
	S/D	1.80	7					2
	D	2.00			2			2
	S/D	2.80	7					3
	D	3.00		3.10	3	+25.90	Firm becoming stiff brown fissured CLAY with blue/grey gleying and scattered selenite crystals. Locally silty and slightly sandy	3
	S/D	3.80	12					4
	D	4.00			4			4
	U	4.50						5
D	5.00			5			5	
S/D	6.30	19					6	
D	6.75			6			6	
U	7.50						7	
D	8.00			8			8	
S/D	9.30	22					9	
D	9.75			9			9	
				10			10	

Constructed as HQ cable percussive techniques

Key: U = Undisturbed B = Bulk D = Small disturbed W = Water S = SPT 'N' [salt spoon sampler] C = SPT 'N' [solid cone] HV = Hand Vane [kPa] PP = Pocket Penetrometer [kg/cm²]

Remarks: - BH level inferred from OS contours - approximate only

Borehole No:
1

[* = extrapolated SPT 'N' value]

Soil Consultants Ltd

SCLChartGenerator_v1.2

Site		10A Belmont Street, London NW1 8HH		Borehole No:		1		
Location				Sheet		2 of 3		
Client:		Semali Investments Ltd		Report No:		9117/JRCB		
Engineer:		Pringuer-James Consulting Engineers Ltd						
Comments	Samples		Field Test	Strata		Strata Description	Legend	
	Type	Depth (m)		Depth (m)	Level (mOD)			
BH dry on completion	U	10.50		10.00	10	+19.00	Stiff brown fissured CLAY with blue/grey gleying and scattered selenite crystals. Locally silty and slightly sandy	10
	D	11.00						11
				11.30		+17.70	Stiff becoming very stiff grey fissured CLAY, locally silty and slightly sandy with occasional partings of silty fine sand	11
	S/D	12.30	27					12
	D	12.75						12
	U	13.50						13
	D	14.00						14
	S/D	15.30	30					15
	D	15.75						15
	U	16.50						16
	D	17.00						17
	S/D	18.30	40					18
	D	18.75						18
	U	19.50						19
	D	19.80		20.00	20	+9.00	End of Borehole at 20m depth	20

Constructed as HQ cable percussive techniques

Key: U = Undisturbed B = Bulk D = Small disturbed W = Water S = SPT 'N' [salt spoon sampler] C = SPT 'N' [solid cone] HV = Hand Vane [kPa] PP = Pocket Penetrometer [kg/cm²]

Remarks: -

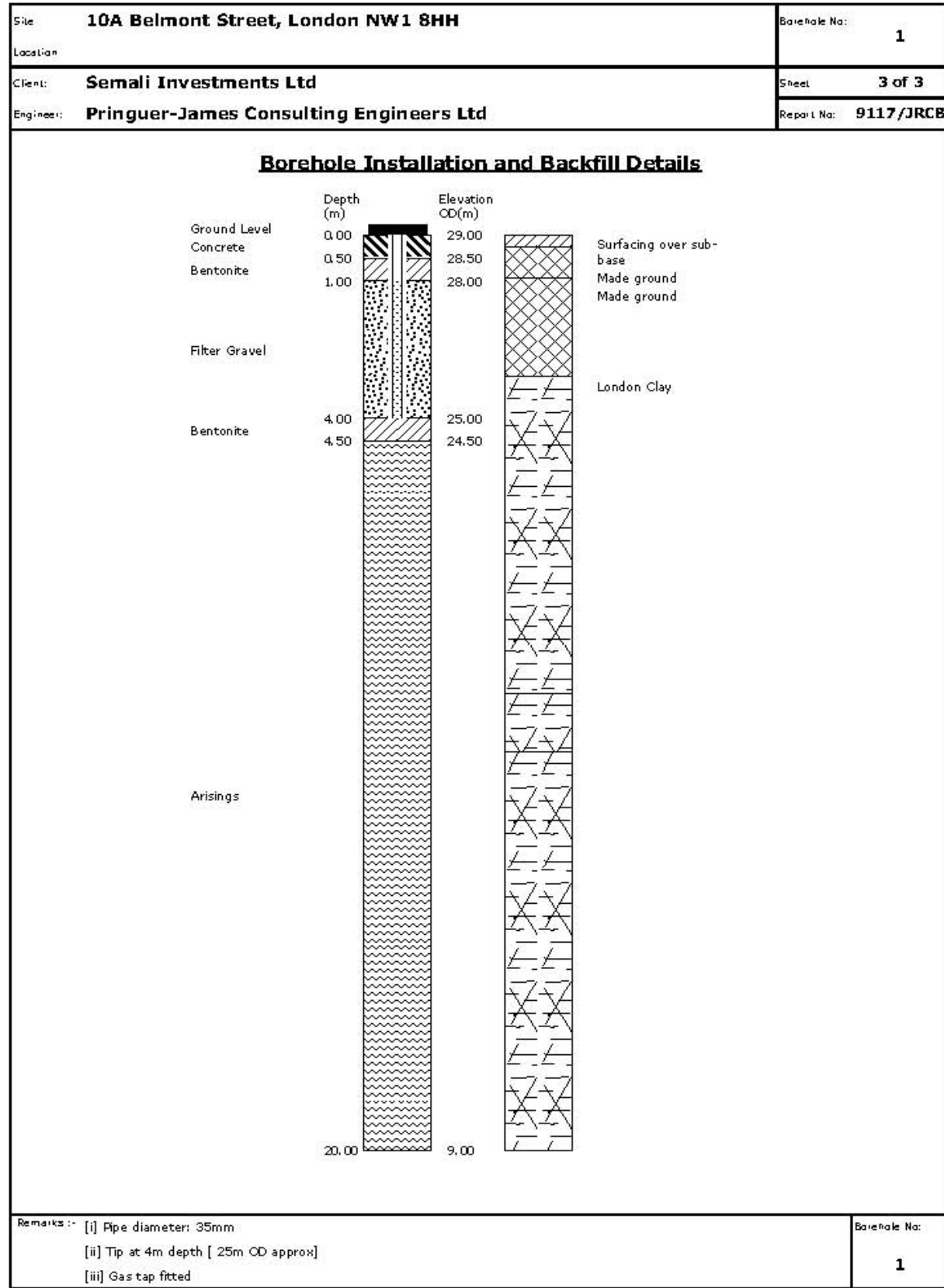
Borehole No:
1

[* = extrapolated SPT 'N' value]

Soil Consultants Ltd

SCLChartGenerator_v1.2





Soil Consultants Ltd

SCL Chart Generator Ver. 1.2



