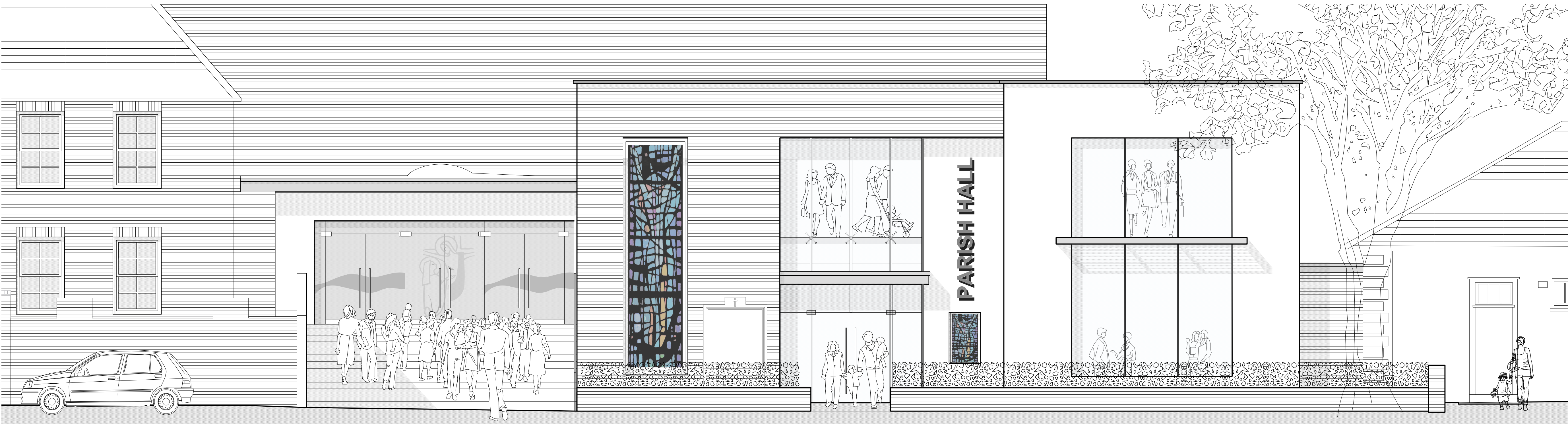




Proposed Street Elevation 1:100



Proposed Street Elevation 1:50

### Materials Legend

	<b>Walls:</b> Facing Brickwork (tbc)
	<b>Walls:</b> White Render (tbc)
	<b>Curtain Walling System:</b> Thermally Broken Aluminium Curtain Walling colour to be confirmed

- 4 23/2/15 Further Amendment of Fenestration after Planners Comments
- 3 29/1/15 Revision of Fenestration after Planners Comments
- 2 7/1/15 General Revision
- 1 18/12/14 General Amendments after Comments by Planner

### FOR PLANNING

#### Kyle Smart Associates

Chartered Architects & Building Consultants  
The Barn, Butchers Wick, Sewell, Nr Dunstable, Beds LU6 1RP  
tel 01582 690222 fax 01582 690333  
email [KyleSmart@KyleSmartAssociates.co.uk](mailto:KyleSmart@KyleSmartAssociates.co.uk)

Project: St Thomas More Church

Drawing: Proposed Front Elevation

Scale: as shown@A	Drg No	rev
Date: Jul-14	13020 wd2.05	P4
drawn SS	checked	CS

0 2 3 4 5 M

Scale 1:50

0 5 10 15 20 M

Scale 1:100