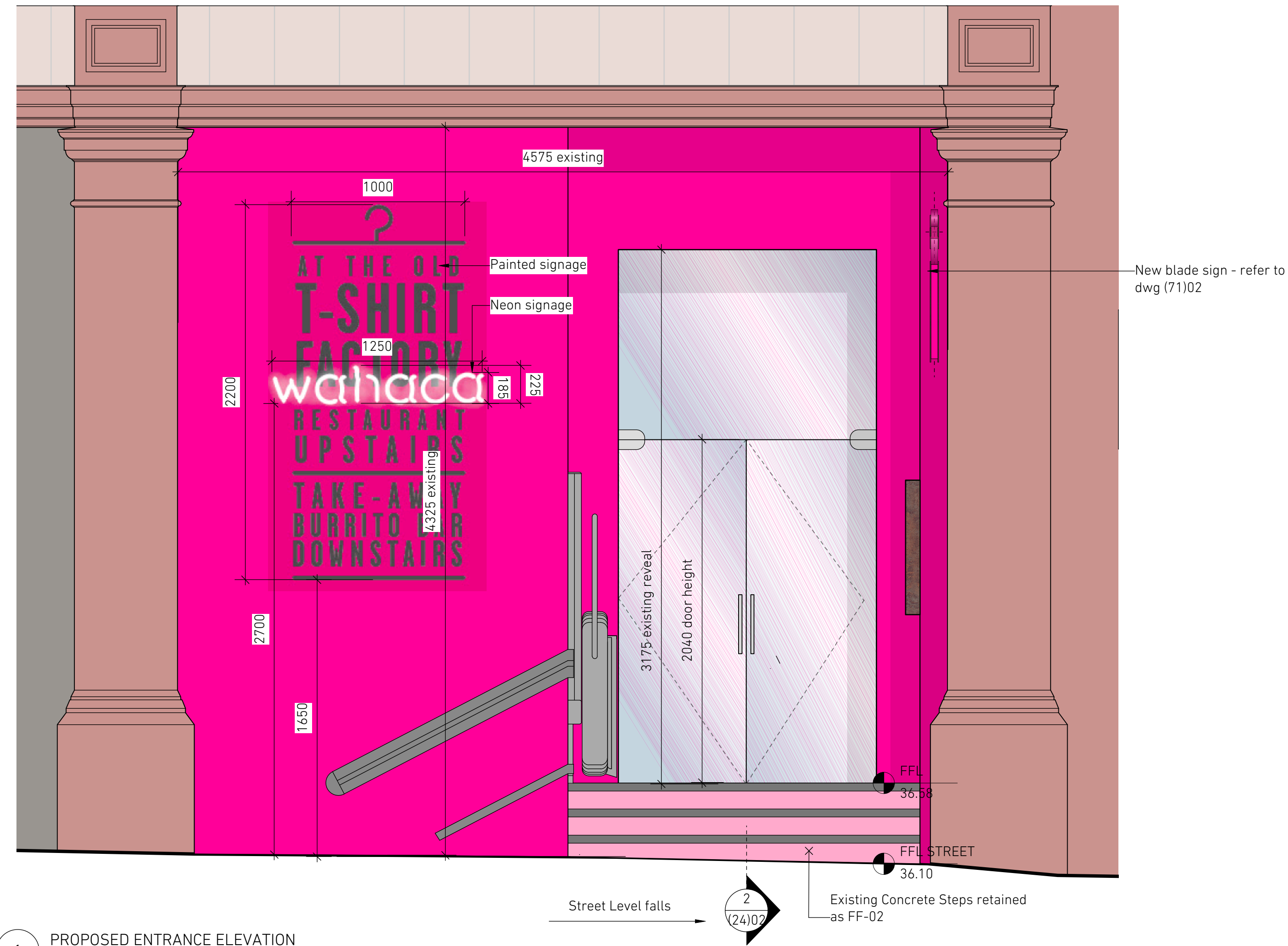


SOFTROOM\_

Softroom  
3 Murphy Street London SE1 7FP  
www.softroom.com  
softroom@softroom.com  
+44 (0) 203 597 6888  
Verify all dimensions on site. Do not Scale

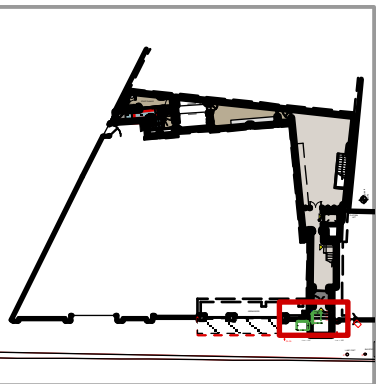
General Notes

PLATFORM LIFT TO BE  
INSTALLED ACCORDING TO  
MANUFACTURERS  
INSTRUCTIONS.  
SPECIFICATION DETAILS TBC



B 19.02.15 Signage Reference Updated

REVISION DATE NOTES



FOR	WAHACA		
PROJECT	KENTISH TOWN	PROJECT NO.	1405
STATUS	PLANNING		
SCALE	Various @ A1	DATE	08.14
TITLE	ENTRANCE DETAILS		
DRAWING NO.	(24)01	REVISION	B