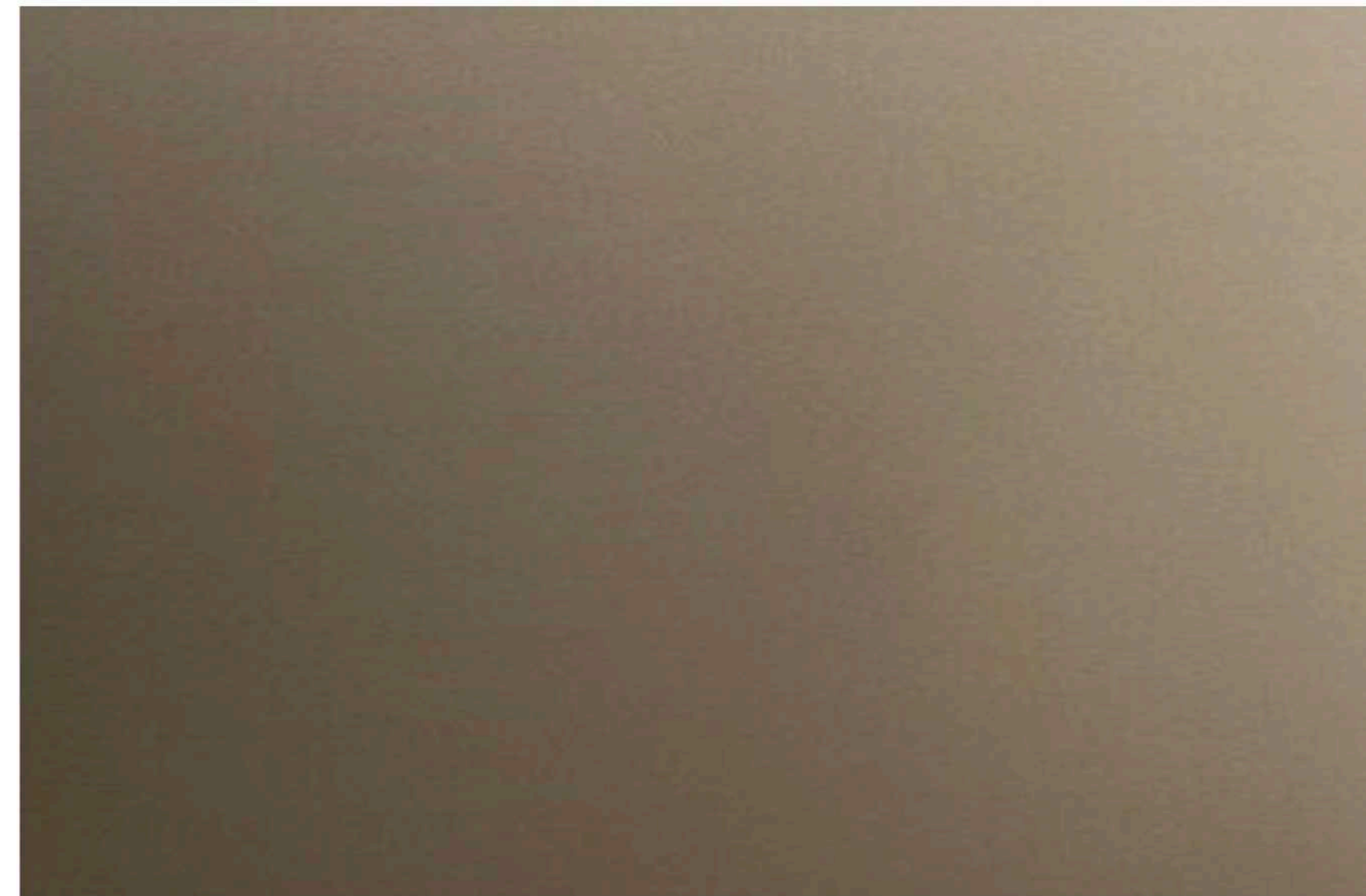
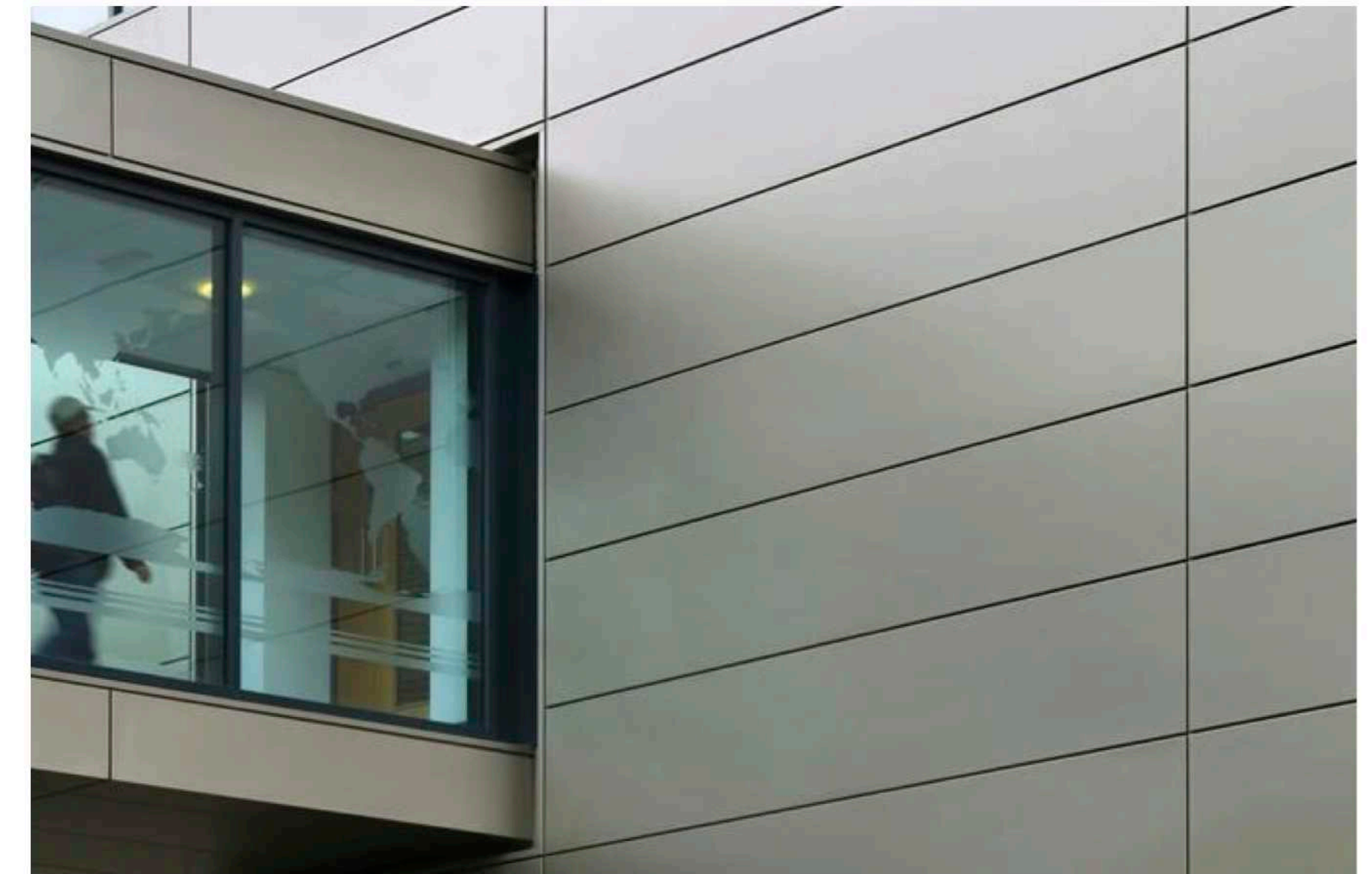




LIGHT STOCK BRICK FOR ATTIC STOREYS



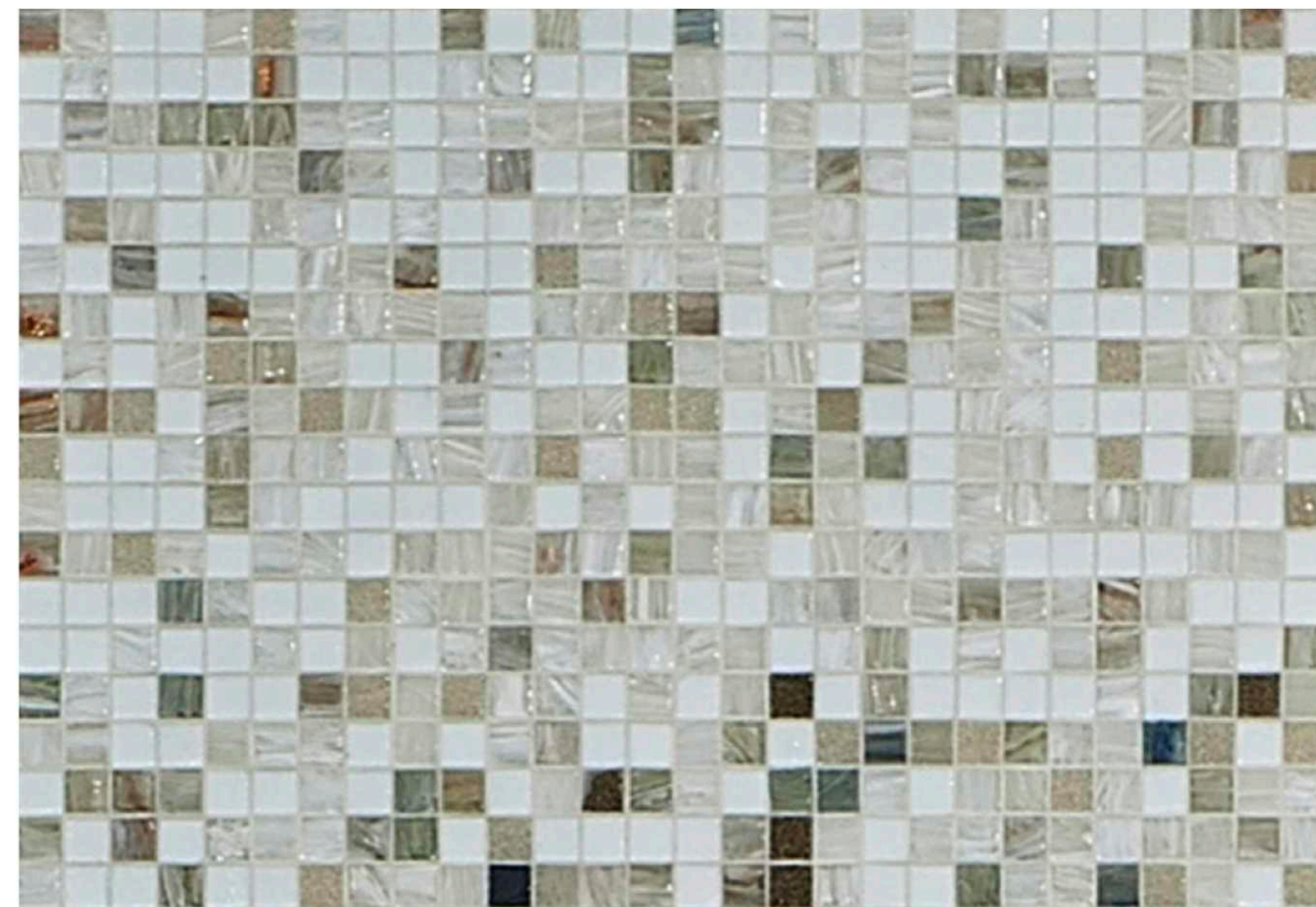
RAL 1035 - PEARL BEIGE FOR ALL METALWORK INCLUDING ALUMINIUM WINDOWS, CAPPINGS, BALUSTRADES



EXAMPLE OF ANODISED ALUMINIUM RAINSCREEN CLADDING



GREY/LIGHT BUFF STOCK BRICK



EXAMPLE OF MOSAIC TILES TO ENTRANCES

A PALETTE OF HIGH QUALITY MATERIALS HAVE BEEN SELECTED TO COMPLEMENT EACH OTHER AND REFERENCE THE SURROUNDING CONTEXT.

THE SITE WAS ORIGINALLY OCCUPIED BY GEORGIAN TERRACED HOUSING. THE PALE BRICK REFERENCES THE GEORGIAN TOWNHOUSES ON FLEET ROAD.

THE JIM ANDERSON MOSAIC WILL BE RELOCATED FROM THE OLD COMMUNITY BUILDING TO THE ELEVATION OF THE NEW BUILDING AND MOSAIC TILES WILL BE INCORPORATED AROUND COMMUNAL ENTRANCES.

THE METALWORK FOR THE PROPOSED BUILDING REFERENCES THE BEIGE COLOUR OF THE ISOKON BUILDING WINDOW FRAMES.

This drawing, the work of architecture to which it relates, and any notes relating to them are protected by copyright. To the extent that this is a design document it is, in addition, protected by design right. All rights in them are reserved. They are provided for your information about the application only. No part of them or any design to which they relate may be reproduced in any form or any means without the prior written permission of Fairview Estates (Housing) Ltd. except as expressly permitted by law. The doing of any unauthorized act in relation to them may result in both a civil claim and criminal prosecution.

© john pardey architects

cad file:

Key

PLANNING AMENDMENTS

rev	date	initials	description
A	26.02.15		Amendments to suit LPA requirements

drawing:

MATERIAL IMAGES

project:

LAWN ROAD, BELSIZE PARK

drawing no:

1406-611

revision:

A

status:

PLANNING

scale @ A3:

NTS

date:

DEC 2014



JIM ANDERSON MOSAIC INCORPORATED ON UPPER PARK ROAD ELEVATION