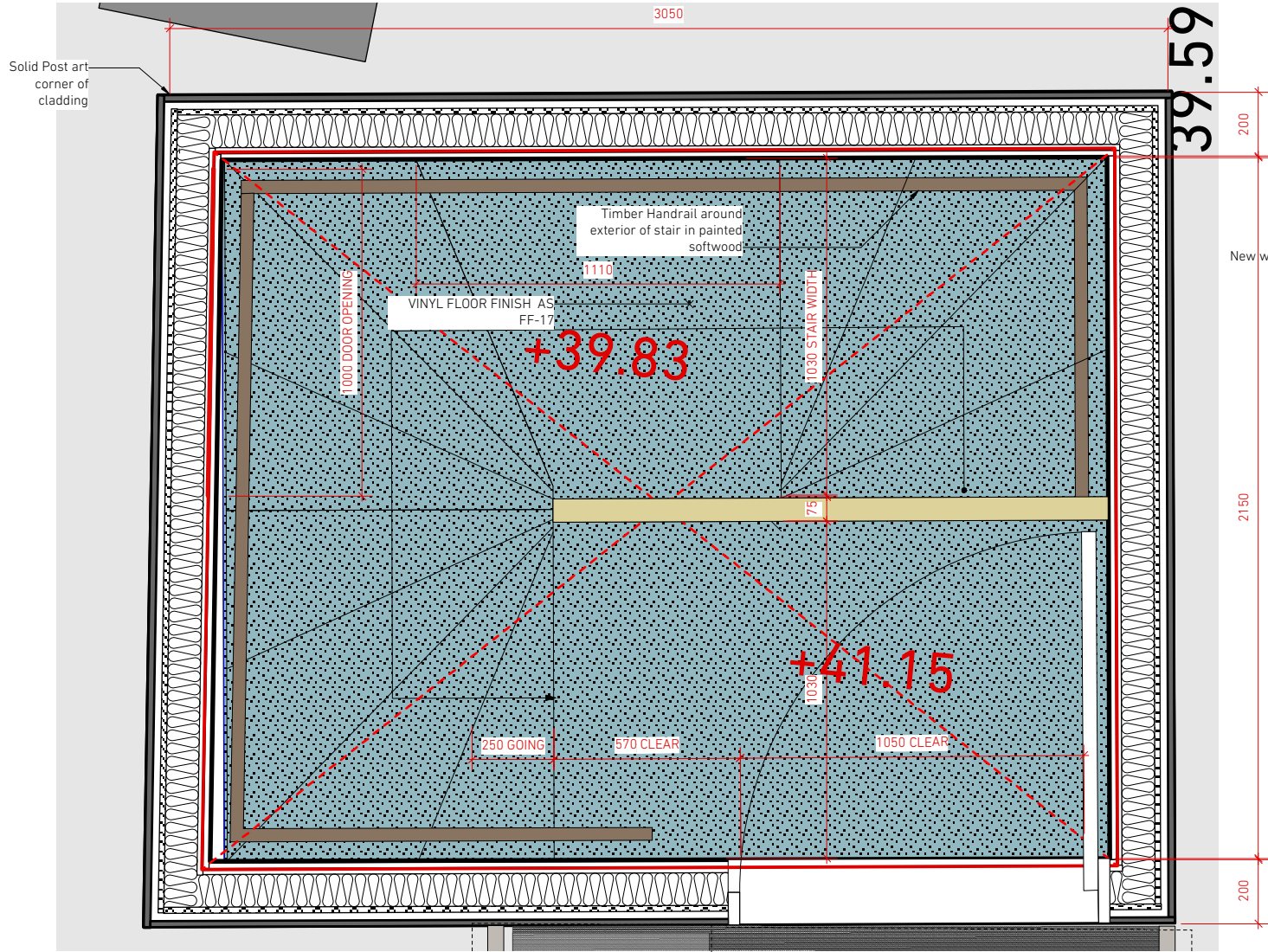


SOFTROOM\_

Softroom  
3 Murphy Street London SE1 7FP  
www.softroom.com  
softroom@softroom.com  
+44 (0) 203 597 6888  
Verify all dimensions on site. Do not Scale

General Notes

-----



2 Back of House / Egress Stair plan  
Scale: 1:10



DESCRIPTION OF WROSK

New stairwell to be formed in enlarged rooflight opening.

Existng glazed rooflight ro be removed and upstand broken out. New trimming steels to be installed as per structural engineers details and rooflight opening enlarged to acomodate new stair.

New Upstand and waterproofing to create base for new stair housing as illustrated.

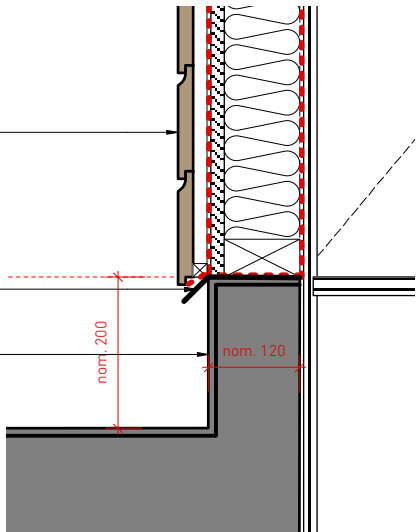
Stair to be timber construction, with stair linings continuing in front of face of concrete roof as illustrated.

Contractor to advise on preferred method of stair fabrication for architect approval.

Exterior Wall as EX-02, refer to details on lift cladding enclosure

Flashing down onto upstand

New upstand around opening - construction / waterproofing to match existing.



3 [Drawing Title]  
Scale: 1:5

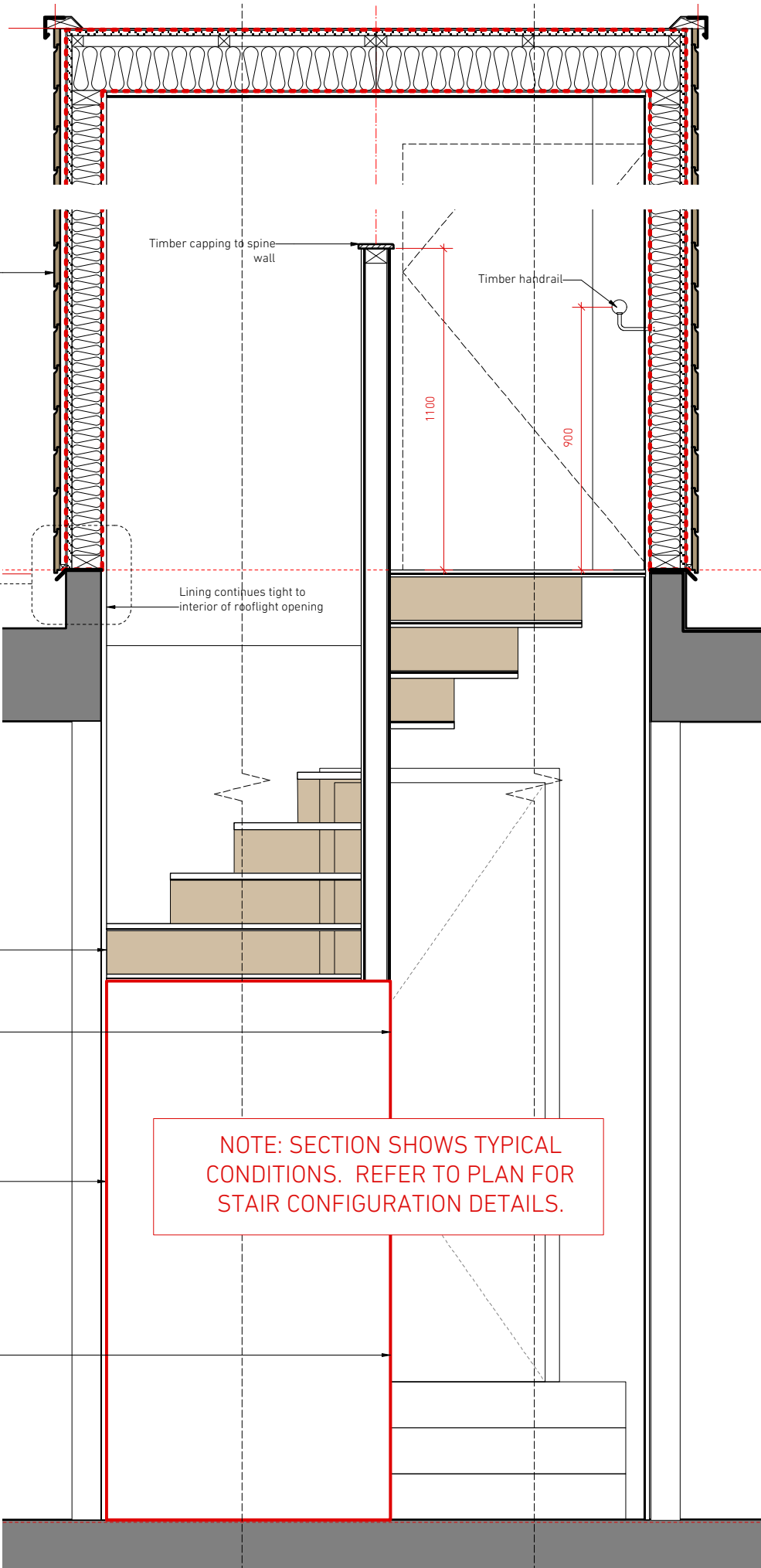
Steps in timber board construction with vinyl flooring over

Spine Wall with timber board lining

New full height high-strength partition with timber board lining

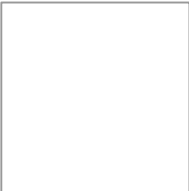
Red line denotes open storage area under stair

2 Typical Back of House / Egress Stair Short Section  
Scale: 1:10



A 19.02.15 Egress Stair modified

REVISION DATE NOTES



FOR	WAHACA	
PROJECT	KENTISH TOWN	PROJECT NO. 1405
STATUS	PLANNING	
SCALE	1:10@A1	DATE 01.15
TITLE	Staff / Egress Internal Stairs	
DRAWING NO.	(24)30	REVISION A