

Site Photos



Pret outdoor seating: 24no
External aluminium frame (black) and teak slatted chair



square tables: 12no
External 500x500mm black Trespa 12mm thick table top with aluminium base



Seating barriers: 6no
Fabric banner with printed logo supported by stainless steel post and base

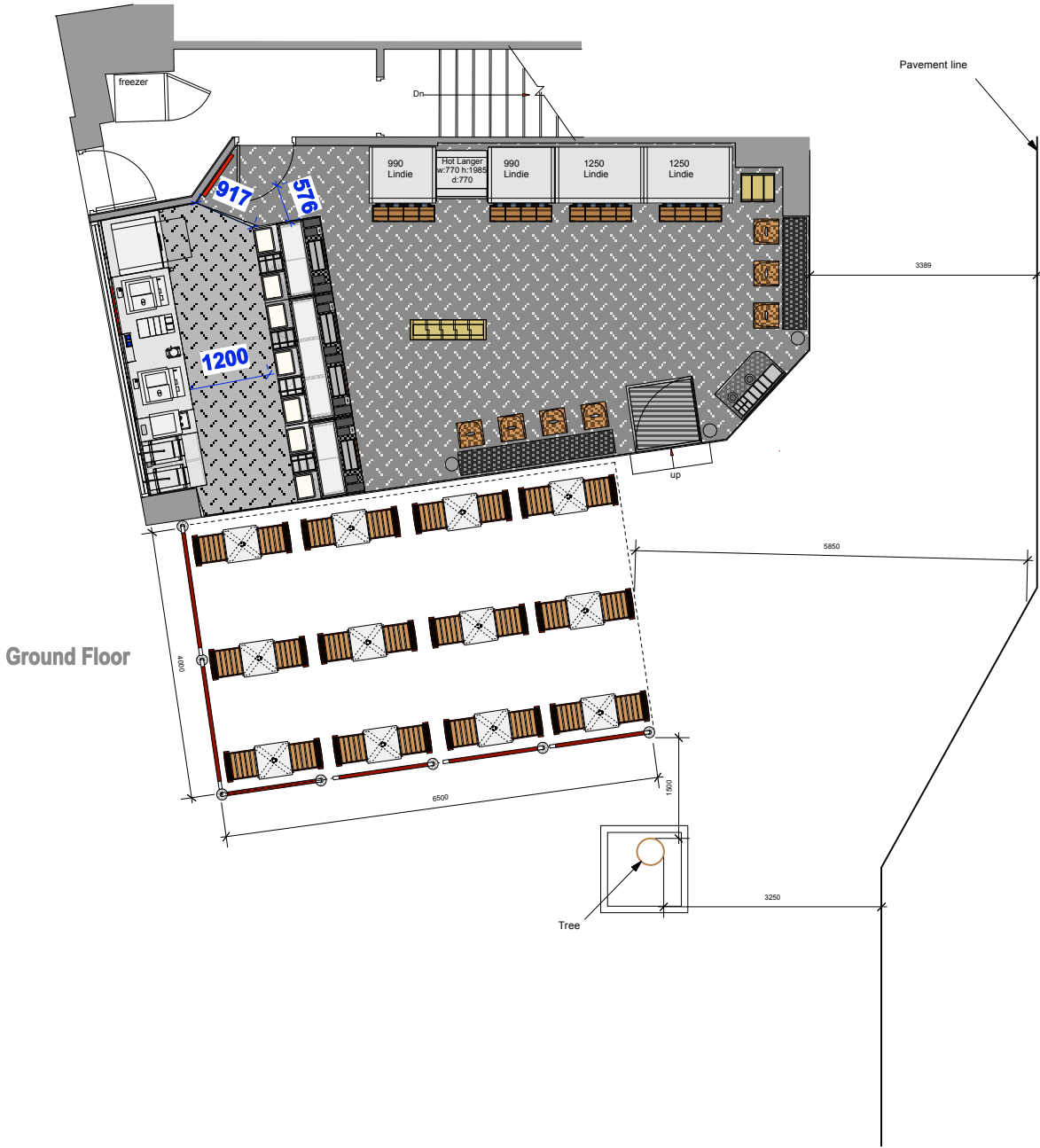
note: external furniture to be brought into store outside of trading hours



exterior chairs and tables:



seating barriers:



FLOOR AREAS:

Ground Floor	Square Meterage	Square Footage (approx)
FOH (customer areas)	36.54	393.26
Servery	13.97	150.37
FOH Subtotal	50.51	543.63
BOH*	102.25	1100.61
WC's	0	0
Total	152.76	1644.24

*BOH area includes: Staff room, Refuse area, COSHH, Managers office, Electric cupboard.

Internal covers: 7no.
External Covers: 12no tables, 24 chairs

★ **PRET A MANGER** ★
1 Hudson Place, London, SW1V 1PZ

Site : **240 High Holborn
London**

Page Title:
EXTERNAL SEATING

Revision Note:

Drawing No. 240HH-Pret-02

Revised Date: Revised No.

Drawn Date: 23.01.15 Drawn By: TC

Scale: 1:100 @ A3

THIS DRAWING IS NOT TO BE SCALED
Figured dimensions only to be used. This drawing is subject to and protected by the provision of the copyrights acts. Any discrepancies or queries to be notified immediately. All dimensions to be verified on site
© PRET A MANGER (EUROPE) LTD 2004