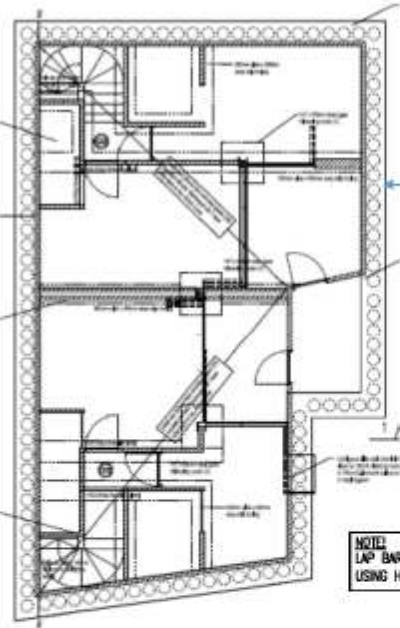


Capping Beam Plan and Detail (NTS)

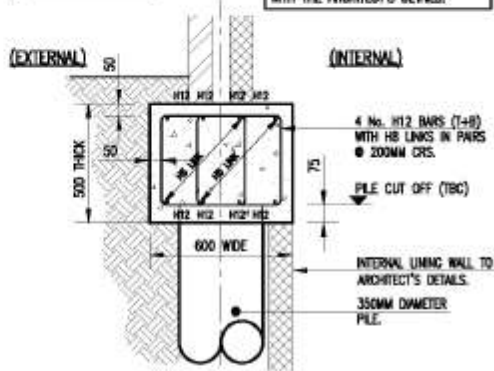


Lower Basement Level Layout

Piled retaining wall with continuous 600 wide x 500 thick RC35 capping beam. Capping beam to be installed at same level throughout. Pile to be embedded 75mm into capping beam, refer to detail indicated below.

NOTE:
LAP BARS AT CORNERS
USING H12 (L-BARS)

NOTE:
ALL FLOOR AND WALL FINISHES, DPC'S
AND DPM'S TO BE IN ACCORDANCE
WITH THE ARCHITECT'S DETAILS.



TYPICAL SECTION THROUGH CAPPING BEAM