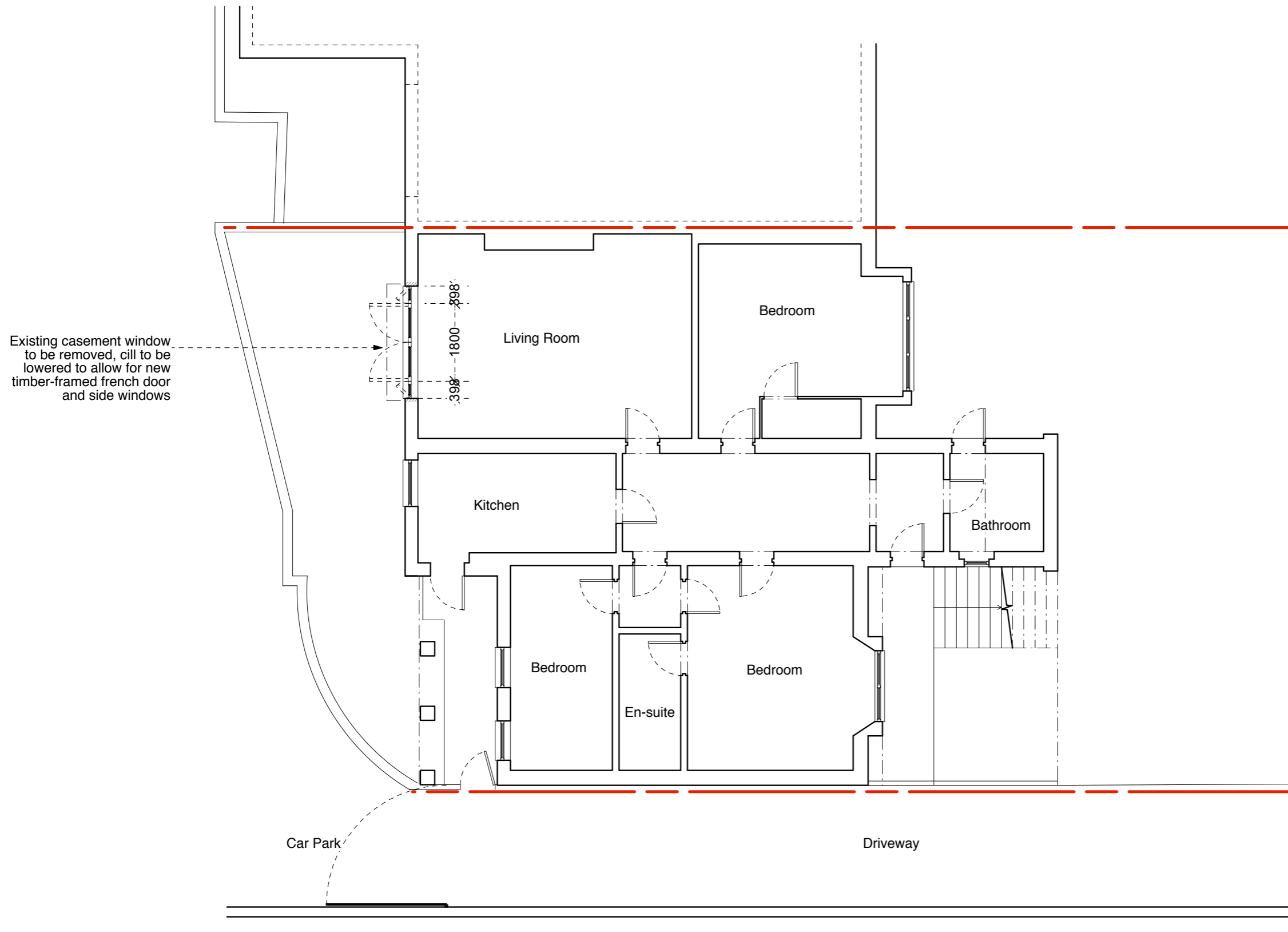


General Notes  
 Do not scale from this drawing  
 All dimensions to be verified on site  
 To be read in conjunction with all relevant documents  
 In the event of discrepancy notify the Architect immediately  
 This document is copyright of Hugh Cullum Architects Ltd

Issue Status  
 SK Information F Feasibility D Design  
 P Permissions S Scheme T Tender  
 C Construction E Existing Condition



Existing casement window  
 to be removed, cill to be  
 lowered to allow for new  
 timber-framed french door  
 and side windows

Car Park

Driveway

(A): French door changed to painted timber (23.02.15/AL)  
 (L): Issued for Planning (15.01.15/AL)  
 Revision: Information (date/drawn by)

**Proposed Lower Ground Floor Plan**

**HUGH CULLUM** 64A Fitzjohn's Avenue  
 ARCHITECTS LTD  
 Bloomsbury Design  
 61b Judd Street  
 London WC1H 9QT  
 t 020 7383 7647  
 f 020 7387 7645  
 mail@hughcullum.com

Planning - New French Door  
 Lower Ground Floor Plan  
 1:100@A3 January 2015

**FZA64-P100(A)**