

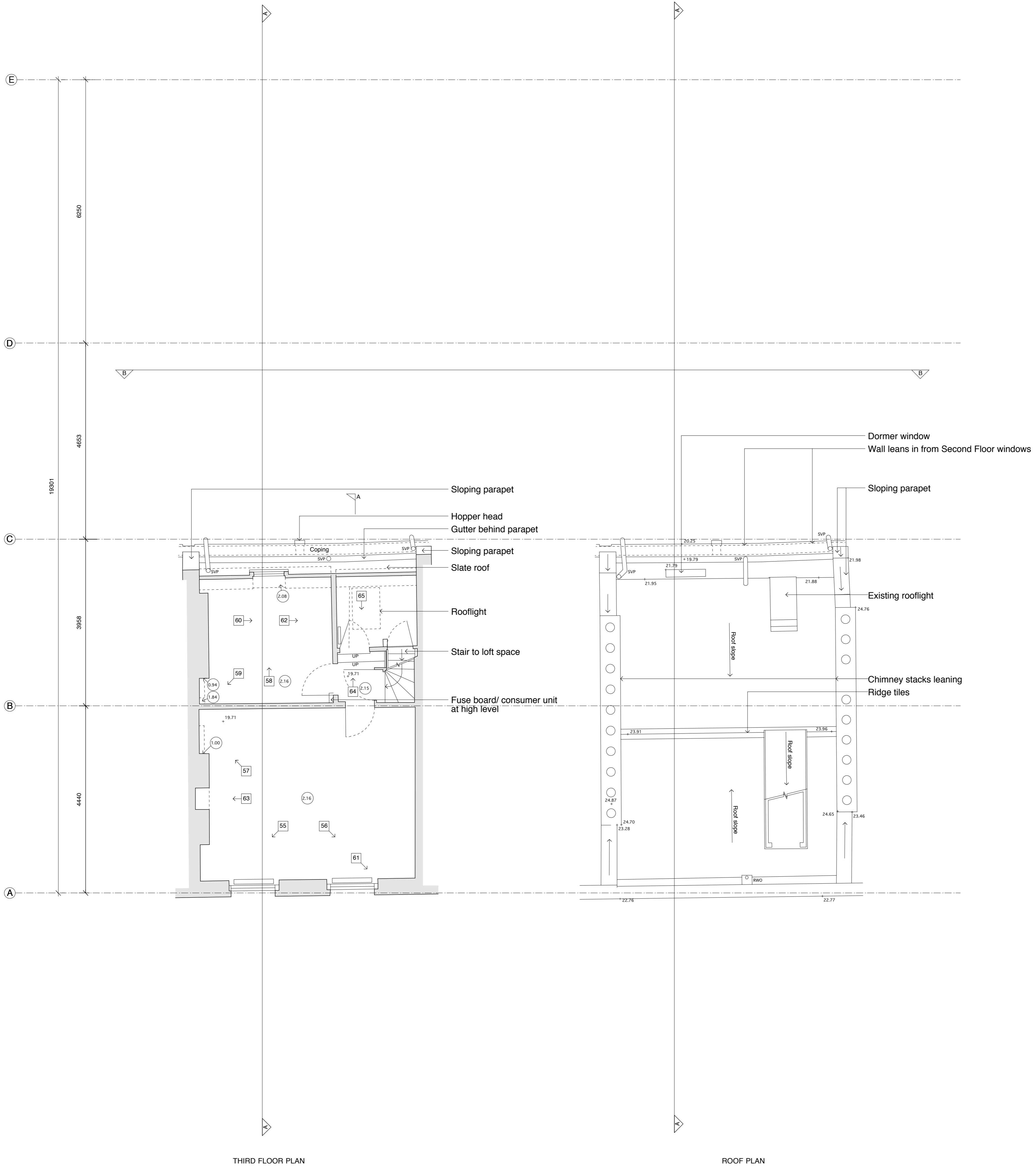
GRIDLINE A - SET OUT FROM CORNER TO RIGHT OF DOORWAY (AS LOOKED AT FROM FRONT LIGHTWELL) OF FRONT LIGHTWELL AT BASEMENT LEVEL.

GRIDLINE B - SET OUT ON CENTRE LINE OF SPINE WALL AT BASEMENT LEVEL.

GRIDLINE C - LINE OF EXTERNAL FACE OF REAR WALL OF MAIN HOUSE AT BASEMENT LEVEL.

GRIDLINE D - LINE OF EXTERNAL CORNER OF EXISTING REAR OUTBUILDING AT BASEMENT LEVEL.

GRIDLINE E - LINE OF INNER FACE OF REAR WALL TO LIGHTWELL AT BASEMENT LEVEL.



© 2013 syte architects limited
 The drawings are the property of syte architects limited. They may not be reproduced, stored in a retrieval system, or transmitted in any form or by any means, electronic, mechanical, photocopying, recording, or by any information storage and retrieval system, without the prior written permission of syte architects limited.
PLANNING ISSUE
 revisions
 A - 17.05.13
 Revised to Planning Issue
 B - 20.07.15
 Position of section lines amended to match proposed drawings.

syte
 60-64 Newark Street London W1F 8TS T: 020 7704 8202 F: 020 7704 8201
 client
 Ian Pirie
 project
 6 Leigh Street
 London
 WC1H 9EW
 drawing title
Third Floor and Roof Plan As Existing
 date drawn by revision
 Jan 13 RW B
 scale checked by drawing
 1:50@A1
 1:100@A3 RW 205.104

