

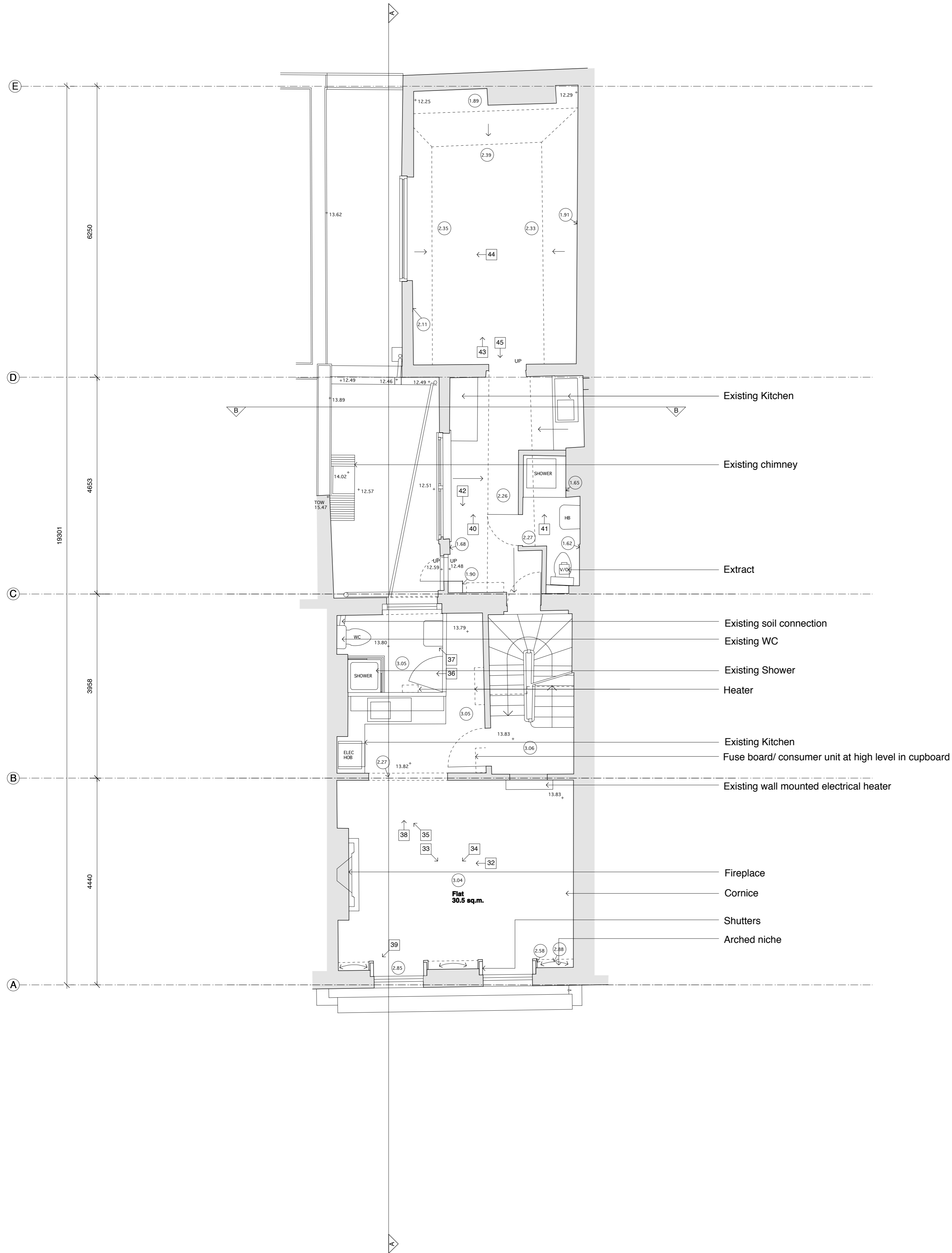
GRIDLINE A - SET OUT FROM CORNER TO RIGHT OF DOORWAY (AS LOOKED AT FROM FRONT LIGHTWELL) OF FRONT LIGHTWELL AT BASEMENT LEVEL.

GRIDLINE B - SET OUT ON CENTRE LINE OF SPINE WALL AT BASEMENT LEVEL.

GRIDLINE C - LINE OF EXTERNAL FACE OF REAR WALL OF MAIN HOUSE AT BASEMENT LEVEL.

GRIDLINE D - LINE OF EXTERNAL CORNER OF EXISTING REAR OUTBUILDING AT BASEMENT LEVEL.

GRIDLINE E - LINE OF INNER FACE OF REAR WALL TO LIGHTWELL AT BASEMENT LEVEL.



FIRST FLOOR PLAN

© 2013 syte architects limited
 Check all dimensions on site prior to commencement of the work.
 The quantity and/or the quality of the materials may vary from the quantities and/or the quality of the materials shown on the drawings. Drawing is copyright and may not be reproduced without the written consent of syte architects limited.

PLANNING ISSUE

revisions
 A - 17.05.13
 Revised to Planning Issue
 B - 20.07.13
 Position of section lines amended to match proposed drawings.

syte
 80-84 Newark Street London W1F 8TS T: 020 7754 8252 F: 020 7754 8201

client
 Ian Pirie
 project

6 Leigh Street
 London
 WC1H 9EW

drawing title
**First Floor Plan
 As Existing**

date	drawn by	revision
Jan 13	RW	B
scale	checked by	drawing
1:50@A1		
1:100@A3 RW		205.102

