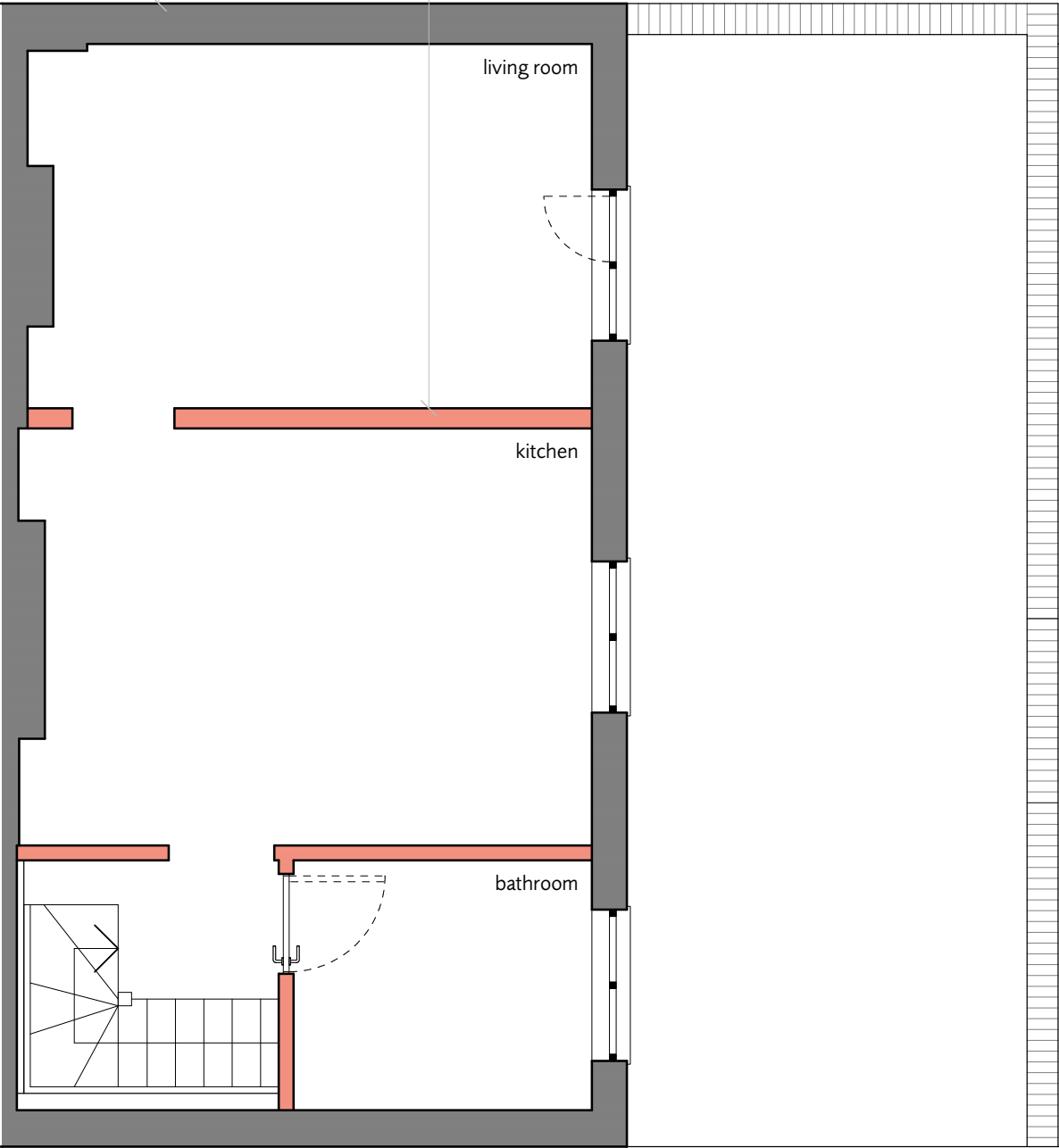


existing walls to be made
good and retained

partitions to be
demolished

© Dols Wong Architects. this drawing may not be copied, altered or reproduced in any way or passed to a third party without their written authority
-report all discrepancies to the architects or engineers before commencing construction or fabrication
-read in conjunction with all other relevant architects and engineer drawings, schedules and specifications
-do not scale off this drawing ref. noted dims only



104, Camden Mews

102, Camden Mews

100, Camden Mews

0 1 5m

10.02.15
for planning

demolition plan (existing first floor)	142
102, Camden Mews London NW1 9AG	1108 1:50 @A3
Dols Wong architects	
The Studio 61, Brondesbury Road London NW6 6BP 44 (0)20 7372 2121 architects@dols Wong.com	