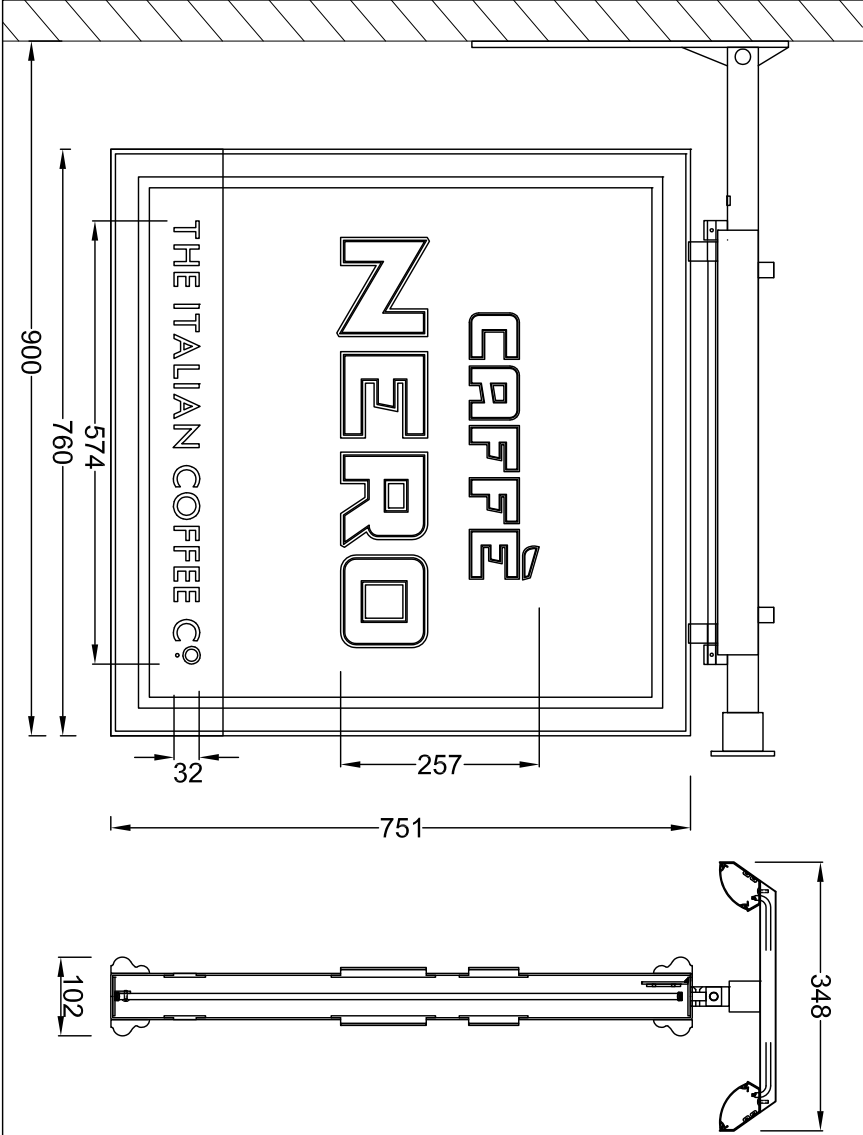
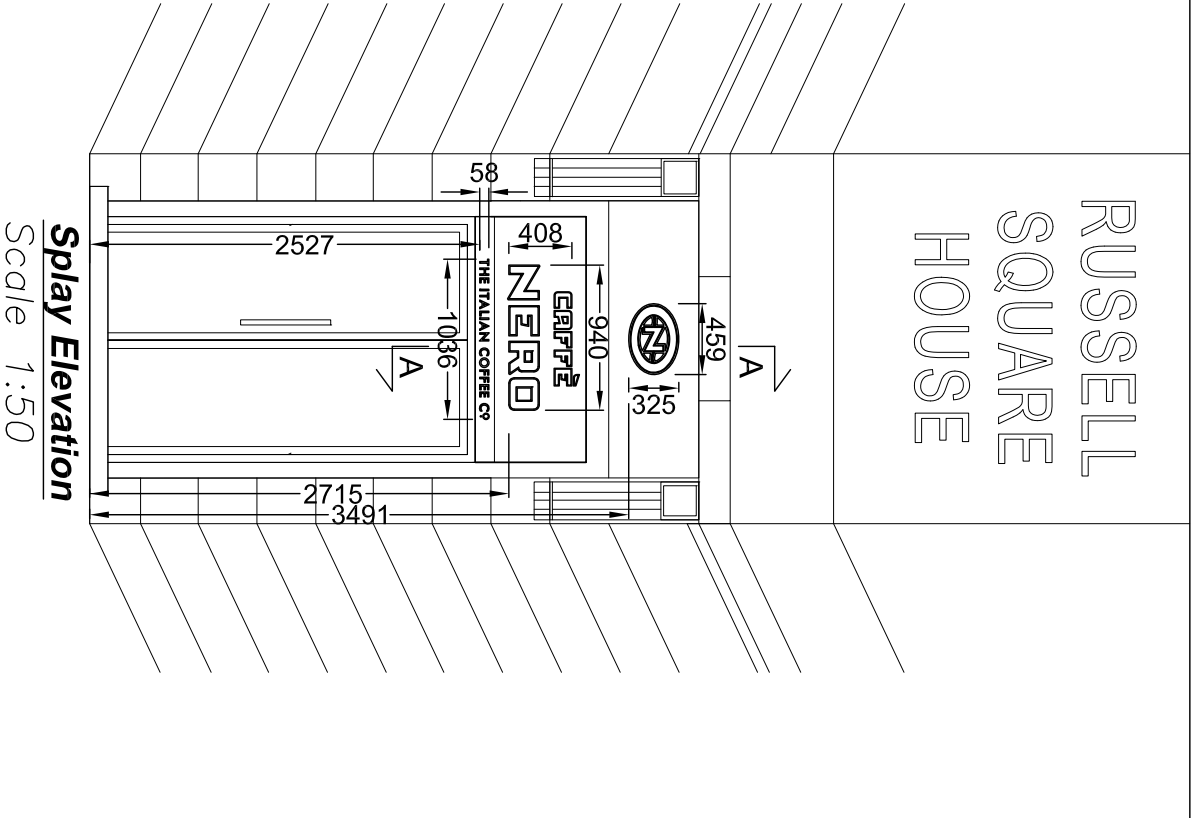


Russell Square Elevation
Scale 1:50



Folded and welded 2.5mm aluminium panels are finished light blue BS4800 20 E 51, with a black lower band.
Architrave around the perimeter is finished the same colour.

Fret cut 'CAFFÈ NERO' letters have push through 10mm 030 opal acrylic which has flat cut 2.5mm aluminium faces bonded to the front.
Aluminium is finished copper and has inset black vinyl applied to the front.

'THE ITALIAN COFFEE Cº' letters are push through 5mm 133 ivory acrylic.

Externally illuminated by black troughs which are metal folded bodies fitted with snap fit diffusers and low energy white LEDs.
Trough fixing arms are welded to the main projecting arm which is mild steel finished satin black.

Client: Caffè Nero		Technical Signs	
Address/location details		Floor 1 - Unit 3	
Russell Square House		Hille Business Centre	
9 Russell Square		132 St Albans Road	
London		Watford, Herts, WD24 4AE	
WC1B 5EG		Tel: 01923 811999	
Elevation & Specifications		Fax: 01923 811998	
Job No		E-mail: info@technicalsigns.co.uk	
Drawn by	Date	13/02/15	
DN	03/02/15	Scale	
As Specified (A3)		Drawing No	Rev
		465280-1	A