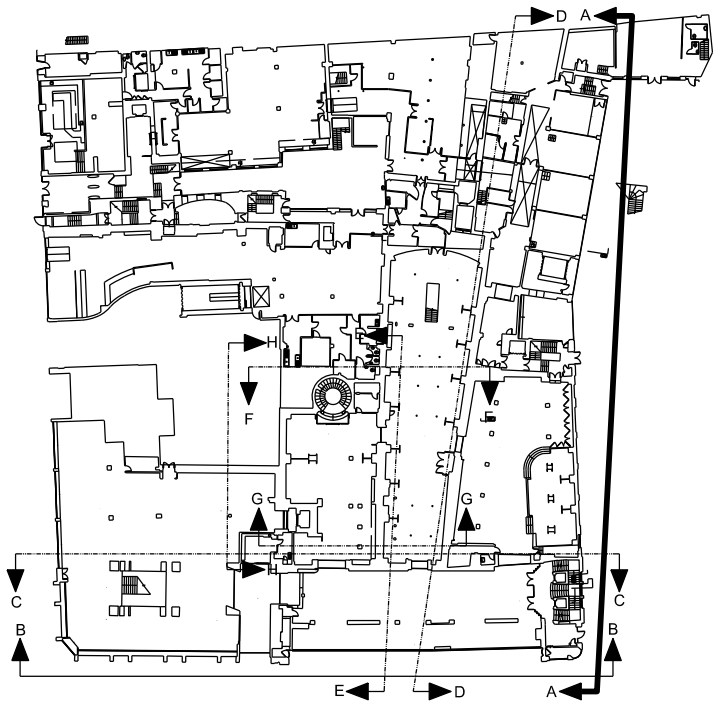




Section A - Alfred Mews Elevation



KEY TO WORKS TO WINDOWS			
Existing timber windows to be replaced	Existing steel windows to be refurbished	Existing metal rooflights to be refurbished	Existing aluminium windows to be replaced

REV.	DESCRIPTION	DATE	DRN BY	CKD BY
PROJECT				
Heals Refurbishment Phase 2				
TITLE				
Section A - Tottenham Court Road Window application				
CLIENT				
Threadneedle Property Investments Ltd				
JOB No.	DRAWING No.	REVISION		
5354	P(0)170	/		
SCALE	DRAWN BY	CHECKED BY		
1:200 @ A3	AR	AM		
STATUS	DATE	DATE		
PLANNING	December 2014			
2nd Floor				Threeways House
40-44 Clipstone Street				London
W1W 5DW				T: 0207 580 5330
F: 0207 436 5348				Ion@jmachitects.net
www.jmachitects.net				www.jmachitects.net