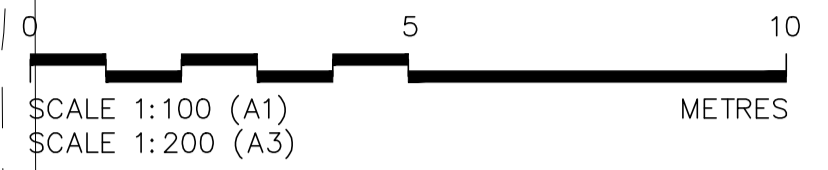


DO NOT SCALE FROM THIS DRAWING
 DRAWING TO BE READ IN CONJUNCTION WITH ALL OTHER ARCHITECTS AND ENGINEER'S CONTRACT DRAWING AND SPECIFICATIONS. ANY DISCREPANCIES MUST BE BROUGHT TO THE ATTENTION OF THE ARCHITECT IMMEDIATELY.
 THE CONTRACTOR MUST VERIFY ALL DIMENSIONS BY SITE MEASUREMENT BEFORE ORDERING MATERIALS OR MANUFACTURING COMPONENTS.
 SUBSTITUTE MATERIALS & PRODUCTS TO THOSE NAMED WILL BE ACCEPTABLE IF PROVEN TO BE OF EQUAL OR HIGHER PERFORMANCE AND NOT IN CONFLICT WITH OTHER ELEMENTS.

NOTES
 All drawings are based on a scaled PDF not a survey. All dimensions to be checked on site and confirmed with Conservation Architect.



- Lead - flat roof, gutter and flashing
- Slate tiles
- Asphalt gutter
- Stone coping
- Blue ridge tiles
- Felt roof
- Sarnafil gutter
- Terne-coated stainless steel
- Vegetation
- Missing Stone
- Eroded Stone

Increase restricted outlet below coping. Remake hoppers in lead only. Remove remains of stone hoppers.

Replace hopper, add leaf guard, and lead overflow

Replace copings where eroded or renewed in concrete. Rebed, repoint all open joints, redress inner face of coping with lead to LSA detail and RGA specification

Reroof R01, R02, R04, R05, R08, R09, R10, R11, R12 in like for like materials to RGA specification. Repair and replace any battens or underlay where damaged. Inspect roof truss.

Renew vents and lead work to LSA detail and RGA specification

New cast iron RWP, profile to match existing.

Clean vegetation from buttress using DOFF cleaning system as per RGA specification

Replace copings where eroded or renewed in concrete. Rebed, repoint all open joints, redress inner face of coping with lead to LSA detail and RGA specification

Replace stone cross

Replace asphalt with new Sarnafil single ply membrane gutter and flashing

Replace hopper, add leaf guard, and lead overflow

Investigation is required to the gutter and RWP outlet

Remove felt roofing, relay with terne-coated stainless steel long strip roofing with lead flashing to LSA detail and RGA specification

Replace lead gutter to improved falls and lengths and replace flashing. To LSA detail and RGA specification

Replace hopper and leaf guard, add lead overflow

Replace copings where eroded or renewed in concrete. Rebed, repoint all open joints, redress inner face of coping with lead to LSA detail and RGA specification

Reroof R01, R02, R04, R05, R08, R09, R10, R11, R12 in like for like materials to RGA specification. Repair and replace any battens or underlay where damaged. Inspect roof truss.

Add two additional cast-iron RWP, profile to match existing.

Propose two roof ladders. To be black painted galvanised steel. Ladder, at feet to be supported on the roof beam, cushioned with lead flashing surrounds. At top to rest on cushion on slate, not ridge tiles.

Replace hopper and leaf guard, add lead overflow

Replace any UPVC rainwater goods with lead and cast iron. Remove any mesh and replace with stainless steel. Repaint all rainwater goods.

Repair and replace eroded parapets, copings and pinacles. Repoint any open joints or replace loose cement mortar.

Renew asphalt and flashings

Cut out failing pointing and replace sky facing surfaces in water proof lime mortar

Rebed and replace slate tiles to perimeter. Add hopper and leaf guard, add lead overflow

Replace copings where eroded or renewed in concrete. Rebed, repoint all open joints, redress inner face of coping with lead to LSA detail and RGA specification

Replace lead gutter and flashing to LSA detail and RGA specification

Replace stone cross

Replace lead to all dormers to LSA details and RGA specification

Replace hopper and leaf guard, add lead overflow

Replace copings where eroded or renewed in concrete. Rebed, repoint all open joints, redress inner face of coping with lead to LSA detail and RGA specification

Remove asphalt roofing, rebuild to RGA proposals and relay in sarnafil single ply membrane with flashing to manufactures specification

Replace hopper and leaf guard, add lead overflow

REV	DATE	DESCRIPTION
D	17/02/2015	For Planning
C	11/02/2015	Revised following roof inspection - West & South porch
B	27/01/2015	For Roof Repair Fund application
A	19/01/2015	For DAC - Correction to clerestory, R03, R06
	19/12/2014	For DAC

FOR PLANNING

JOB TITLE		
Christ Church Hampstead		
DRAWING TITLE		
Roof Plan		
Proposed Repairs		
JOB No:	DWG No:	REV
537B	D02	D
DRAWN BY:	SCALE (AT A1):	DATE
JMc	1:100 (1:200@A3)	Dec14

RICHARD GRIFFITHS ARCHITECTS
 5 Maidstone Mews, 72-76 Borough High Street, London SE1 1GN
 T +44(0)20 7357 8788 | F +44(0)20 7403 7887
 E admin@rgarchitects.com | www.rgarchitects.com

10
11

SAGE